

Bond Projects Update

Lake Washington School District



May 2019

Featured Building on Success News

100-day countdown: School bond projects open in fall



Countdown to the first day of school

2016 Bond Projects Update



Teacher tours have begun for staff at four new LWSD schools: Timberline Middle School (the new middle school at Redmond Ridge); rebuilt and enlarged Peter Kirk Elementary and Margaret Mead Elementary; and the first phase of rebuilt and enlarged Juanita High School. The schools will welcome students for the first day of school in 100 days – September 3.

In this issue of Building on Success Bond eNews:

- Catch a sneak peek of [Timberline Middle School](#) with Principal Heidi Paul.
- Did you or your student attend [Mead Elementary](#)? Learn more about an Alumni Open House inside the old building on June 6.
- See a group of students' reactions to their first look inside [Kirk Elementary School](#). And learn more about the alumni open house on June 8.

- Teachers got their first look inside the first phase of [Juanita High School](#) this month.
- Watch an uplifting Seattle Storm video, which includes one of the project managers at [Old Redmond Schoolhouse](#). Also learn more about the building's timeline for completion.

A sneak peek inside Timberline Middle School with Principal Heidi Paul



Workers are putting the finishing touches on Timberline Middle School. Furniture will be delivered over the summer. [Join Principal Heidi Paul for a sneak peek](#) of the new middle school at Redmond Ridge. There will be space for up to 900 students when it opens in September. This will help to alleviate overcrowding at Evergreen Middle School and Redmond Middle School.

Timberline Middle School

Margaret Mead Elementary



- Concrete masonry is progressing around the north side of the building.
- Installation of drywall in the gym and commons is wrapping up.
- Staircases are being installed.
- Painting has begun.

School news: “Time capsule reveals what has changed – and what hasn’t – in 14 years.” [Learn more about the time capsule](#) construction workers uncovered that was buried in 2005 to mark Mead’s 25th anniversary in 2005.

Invitation to alumni June 6: Alumni and community members can tour the old building before it is demolished this summer. Attendees will be able to peruse yearbooks from the school’s 39 years of existence or write a fond memory on the walls. Children will be able to play on the school playground.

What: Farewell to the old Margaret Mead Elementary building

When: Thursday, June 6 from 7-8 p.m.

Where: 1725 216th Ave N.E., Sammamish, WA 98074

Margaret Mead Elementary School

Peter Kirk Elementary



After winning a tour at the Peter Kirk PTSA auction, four students, a parent and two teachers had their chance to tour the new Peter Kirk Elementary in April. Painting in the gym is underway, and classrooms are starting to get casework installed. Click the button below to see more progress photos.

Invitation to alumni June 6 (Change from original published date): Alumni and community are invited to tour the old building on Thursday, June 6 before it is demolished this summer. Attendees will be able to thumb through yearbooks from Peter Kirk’s 44-year history.

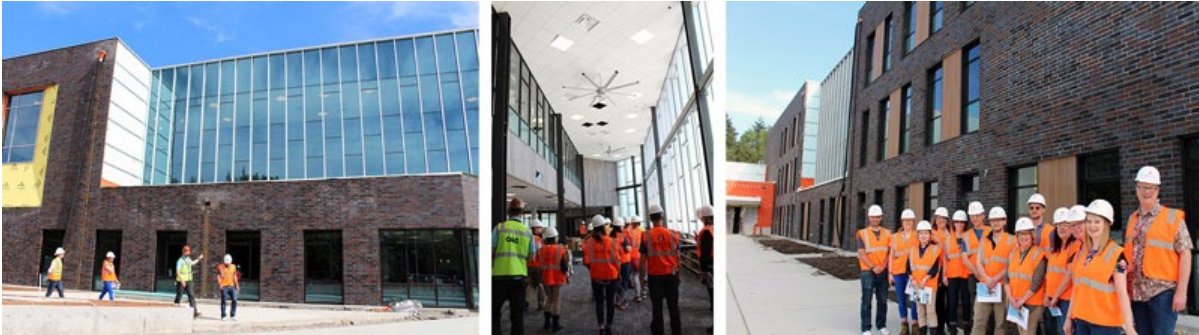
What: Farewell to the old Peter Kirk Elementary building

When: Saturday, June 6 from 6-7 p.m.

Where: 1312 6th St., Kirkland, WA 98033

Peter Kirk Elementary School

Juanita High School



Teachers had the first chance to see their new building during small tours this month. “There’s so much light,” exclaimed one teacher as she walked through a classroom wing of the new Juanita High School.

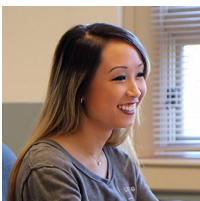
Teachers were equally impressed with the acoustic ceilings in the Performing Arts Center and music classrooms. The new auditorium will seat 424 people for concerts or theater performances. The first phase of the new building opens in September. The second phase of the building will open in fall 2020. [Watch a slideshow of the first teacher tour on May 6.](#)

Juanita High School

Old Redmond Schoolhouse



Seattle Storm video includes Old Redmond Schoolhouse project manager



“You can be whatever you want to be.” The Seattle Storm women’s basketball team wanted to show how women are “Taking the World by Storm.”

The video features women around the Seattle area, including Melody Cross, a construction project manager at Old Redmond Schoolhouse from Lydig Construction. [Watch the uplifting video.](#)

Revised timeline for Old Redmond Schoolhouse

The Old Redmond Schoolhouse (ORSH) was originally scheduled to open to preschool students in fall 2019. ORSH, built in 1922, is being remodeled as an Early Learning Center with the capacity for 10 classrooms.

Work began in the fall of 2018 on the interior remodel. One of the challenges when remodeling an older building is the potential to uncover additional work as walls and ceilings are removed. The district has determined that additional maintenance will be required to get the building ready for opening. Due to the additional time required to complete the project, the opening will be postponed until fall 2020.

The preschool programs that were scheduled to move to Old Redmond Schoolhouse will remain at Dickinson Elementary for the 2019-20 school year.

Old Redmond Schoolhouse

Completed projects



Ella Baker Elementary School

This new school opened in fall 2018 with space for 690 students. The student-centered design incorporates features that conserve natural resources and reduce energy costs. The school is named after Ella Baker, a Civil Rights leader, and focuses on empowering students to be changemakers.

Ella Baker Elementary



Clara Barton Elementary School

The new school opened in fall 2018 with space for 690 students. The student-centered design incorporates features that conserve natural resources and reduce energy costs. The school is named after Clara Barton, who was a teacher before she founded the American Red Cross.

Clara Barton Elementary



Explorer Community School

The school opened in fall 2017. Four innovative and energy-efficient modular classroom buildings replaced aging portable classrooms.

Explorer Community School

Have a question about a bond project? Let's Talk!

Have a question about any of these projects? [Ask us through our "Let's Talk" system](#). This system allows you to share comments or ask questions to members of our team.



Connect with us!

