

Bond Projects Update

Lake Washington School District



March 2019

Featured Building on Success News

Six-month countdown: Five projects will open in September



Countdown to the first day of school

2016 Bond Projects Update

A collage of five aerial photographs showing school construction projects. The top-left photo is labeled 'Peter Kirk Elementary School'. The top-right photo is labeled 'Margaret Mead Elementary School'. The bottom-left photo is labeled 'Juanita High School Phase 1'. The bottom-middle photo is labeled 'Timberline Middle School'. The bottom-right photo is labeled 'Old Redmond Schoolhouse' and shows the interior wooden framing of a building. A large black banner with white and blue text reads 'FIRST-DAY COUNTDOWN 6 MONTHS' and includes a white calendar icon. The text 'Aerial photos by Tim Rice' is at the bottom right of the collage.

Peter Kirk Elementary School

Margaret Mead Elementary School

FIRST-DAY COUNTDOWN
6 MONTHS

Juanita High School Phase 1

Timberline Middle School

Old Redmond Schoolhouse

Aerial photos by Tim Rice

Enjoy this bird's-eye view of the new schools opening in six months: Timberline Middle School (the new middle school at Redmond Ridge); Rebuilt and enlarged Peter Kirk Elementary and Margaret Mead

Elementary; and the first phase of rebuilt and enlarged Juanita High School. We have also posted updated photos of the interior remodel happening at Old Redmond Schoolhouse. The building will open with 10 preschool classrooms in the fall.

Weather impacts: The district is working with our partners to ensure projects stay on schedule despite February's record snowfall.

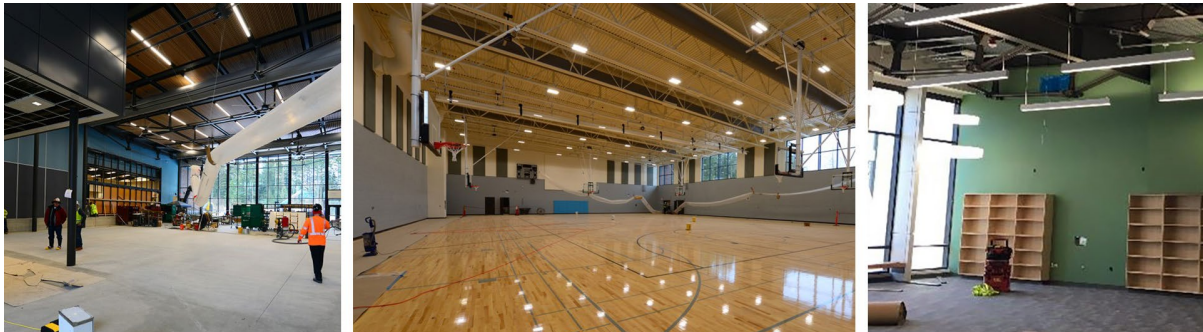
More photos: Photo slideshows, monthly aerial photos, videos, project timelines and contractor information are posted on our website. Click the project button under each update.

Updates on other 2016 bond projects

Click on a link below to jump to updates for other projects funded by the 2016 bond:

- [Timberline Middle School](#)
- [Juanita High School](#)
- [Margaret Mead Elementary School](#)
- [Peter Kirk Elementary School](#)
- [Old Redmond Schoolhouse](#)
- [Ella Baker Elementary School](#)
- [Clara Barton Elementary School](#)
- [Explorer Community School](#)

Timberline Middle School



- The gymnasium floor is complete.
- Kitchen equipment is installed.
- Painting and flooring are nearly complete.
- Shelves are being installed in the library.
- Landscaping has begun.

[Timberline Middle School](#)

Juanita High School



- Geothermal well installation is complete. [Watch a video with students from Juanita High School's Earth Corps club to learn more about geothermal technology.](#)
- The principal toured the building with project staff.
- Casework installation in science labs is complete.
- Ceiling grid installation is nearly complete.
- Sheetrock and painting are complete.
- Installation of stage rigging is beginning in the Performing Arts Center.
- Installation of light fixtures has begun.

Juanita High School

Margaret Mead Elementary School



- Exterior framing is complete.
- Roof installation on the three-story building has begun.
- Drywall installation has begun.

Margaret Mead Elementary School

Peter Kirk Elementary School



- Building weatherproofing (orange in photo) is complete.
- Staff had their first chance to tour the new building in February.
- Framing is complete.
- Drywall installation has begun.

Peter Kirk Elementary School

Old Redmond Schoolhouse



- Demolition is complete. The left and right photos show the original brick and wood framing that were visible after demolition.
- Classroom framing is in progress. The center photo shows a future preschool pod with the restroom in the middle of two classrooms.
- Electrical and mechanical installation have begun.

Old Redmond Schoolhouse

Completed projects



Ella Baker Elementary School

This new school opened in fall 2018 with space for 690 students. The student-centered design incorporates features that conserve natural resources and reduce energy costs. The school is named after Ella Baker, a Civil Rights leader, and focuses on empowering students to be changemakers.

Ella Baker Elementary



Clara Barton Elementary School

The new school opened in fall 2018 with space for 690 students. The student-centered design incorporates features that conserve natural resources and reduce energy costs. The school is named after Clara Barton, who was a teacher before she founded the American Red Cross.

Clara Barton Elementary



Explorer Community School

The school opened in fall 2017. Four innovative and energy-efficient modular classroom buildings replaced aging portable classrooms.

Explorer Community School

Have a question about a bond project? Let's Talk!

Have a question about any of these projects? [Ask us through our "Let's Talk" system](#). This system allows you to share comments or ask questions to members of our team.



Connect with us!



