

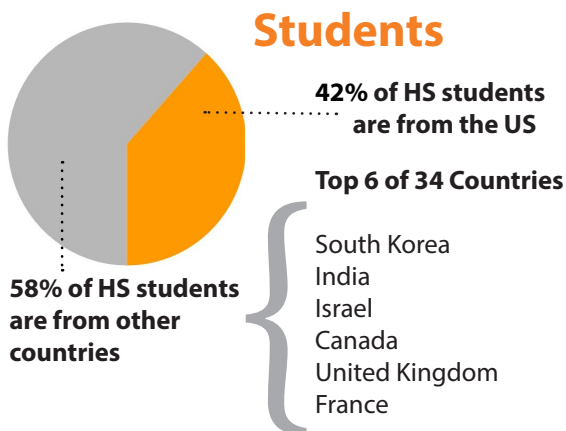


American Embassy School
New Delhi

High School Profile 2020-21

School & Community

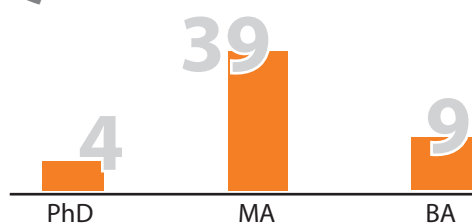
Founded in 1952, the American Embassy School is a non-profit tuition-based day school, located on a 12-acre campus. Enrollment from Pre-K - Grade 12 is approximately 954. The high school currently serves 326 students with 83 students in Grade 12. AES is accredited by the Middle States Association of Colleges and Schools. AES serves students whose parents are employed by foreign service agencies, embassies, USAID, United Nations organizations, and multinational corporations.



Faculty

52 HS faculty
31 US citizens

Qualifications



Curriculum & Calendar

AES offers a rigorous college preparatory program which includes the International Baccalaureate Diploma and Advanced Placement options. Enrollment in the IB program and AP classes is open to all students. Students may not exceed three HL or AP courses (or combinations thereof) in a school year. The academic year is divided into two semesters beginning mid-August and mid-January respectively. Maximum class size is 21. First semester grades are available after January 24.

Graduation Requirements

Students must complete a minimum of 23 credits to graduate. Specific credit requirements are:

- English ●●●● (4 credits)
- Social Studies ●●● (3 credits)
- Mathematics ●●● (3 credits)
- Science ●● (2 credits)
- World Language ●● (2 credits)
- Physical Education ●● (1.5 credits)
- Health ● (0.5 credits)
- Fine Arts ●● (1.5 credits)

Application Limit

AES students are limited to ten university applications. Universities receiving an application from AES can be assured that the student is a serious applicant.

Community Service

AES' motto, "Enter to Learn, Leave to Serve," is actively upheld by the work of the student-led Service Council and 12 community service clubs. AES service clubs work with local children, impoverished communities, human and animal rights, and environmental concerns.

Students actively participating in voluntary service

75% all HS students
Grade 12 students 90%

Mission

The American Embassy School provides a balanced education defined by a joyful pursuit of excellence in academics, athletics, arts, and service. AES enables each student to be an inspired lifelong learner and a responsible, compassionate global citizen.

Contact

Director

Dr. Andrew Torris

Principal

Mr. Iftekhhar Syed

Assistant Principal

Mr. Derwin Kitch

IB/AP Coordinator

Ms. Teresa Hjellming

Counselors

Ms. Cristina Alcoz (A-H)
calcoz@aes.ac.in

Mr. Alan Graveson (I-O)
agraveson@aes.ac.in

Mr. Richard Thompson (P-Z)
rthompson@aes.ac.in

IB Code: 000220

CEEB Code: 671800

MAILING ADDRESS

Chandragupta Marg
Chanakyapuri, New
Delhi 110021 INDIA

PHONE

+91 11 26888854

WEBSITE

www.aes.ac.in

Covid 19 Statement

The Class of 2020 switched to online learning on March 12, 2020 until the end of the school year. Our school did not change the grading scale.

IB & AP Courses Offered

Statistics
US History

Group 1

English A
Language & Literature SL/HL
English A Literature SL/HL
Self-Taught Language A SL

Group 2

French ab initio SL
French B SL
Mandarin ab initio SL
Mandarin B SL
Spanish ab initio SL
Spanish B SL/HL

Group 3

Economics SL/HL
Environmental Systems & Societies SL
History SL/HL
Psychology SL/HL

Group 4

Biology SL/HL
Chemistry SL/HL
Computer Science SL/HL

Environmental Systems & Societies SL
Physics SL/HL

Group 5

Applications & Interpretation SL/HL
Analysis & Approaches SL/HL

Group 6

Music SL/HL
Theater SL/HL
Visual Arts SL/HL

Class of 2021 Weighted GPA Distribution

| Quintile | GPA | # of students |
|----------|---------------|---------------|
| 1 | 4.44 - 4.19 | 17 |
| 2 | 4.18 - 3.93 | 16 |
| 3 | 3.92 - 3.67 | 16 |
| 4 | 3.65 - 3.17 | 17 |
| 5 | 3.13 - No GPA | 17 |

Policy on Class Rank

Due to the small class size and the academic, linguistic, and educational diversity of our transient and international student body, AES does not rank students. The weighted GPA distribution for the Grade 12 class is based on coursework completed at AES. Students who joined AES in their senior year are not included in this breakdown.

AP/IB Results

AES has an open enrollment policy for students wishing to take AP or IB courses or the full IB Diploma.

IB DIPLOMA

| Year | 2019 | 2020 |
|---------------------------------------|------|------|
| Total # of IB Candidates | 68 | 90 |
| # of students who are IBDP Candidates | 50 | 49 |
| Pass Rate | 96% | 96% |
| Average Score | 35 | 37 |
| Highest Score | 45 | 44 |
| # earning 40+ | 8 | 17 |

ADVANCED PLACEMENT

| Year | 2019 | 2020 |
|--|----------|-----------|
| *parentheses indicate # of students ** AP results include all students in High School | | |
| Art History | | 3.14 (7) |
| Calculus AB | 3.8 (5) | 3.3 (10) |
| Statistics | 3.7 (17) | 3.92 (25) |
| US History | 4.6 (18) | 4 (16) |

*Testing Restrictions on international students & US citizens abroad

Our students have had less access to SAT/SAT subject and ACT tests because of fewer test dates abroad, fewer sites offering the test, score cancellations, technology difficulties, and higher fees. Please take this into account when evaluating our students' applications.

** AES counselors will disclose any out of school suspension/expulsion from this school or transfer schools.

Grade Scale & Weighting (Class of 2020)

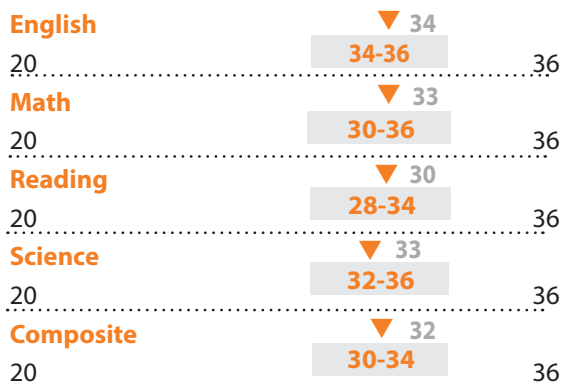
Grades were reported on an "A" to "I" system based on percentages earned. IB Higher Level and AP courses are weighted. Theory of Knowledge, Self-Taught Languages, Student Internships and Independent Study courses are graded Pass/Fail.

| Grade | GPA Points Normal | GPA Points Weighted |
|---------|----------------------|---------------------|
| A+ | 4.33 | 4.83 |
| A | 4.00 | 4.50 |
| B+ | 3.50 | 4.00 |
| B | 3.00 | 3.50 |
| C+ | 2.50 | 3.00 |
| C | 2.00 | 2.50 |
| D | 1.00 | 1.00 |
| I or NC | Incomplete/No credit | |

ACT Data for Class of 2021

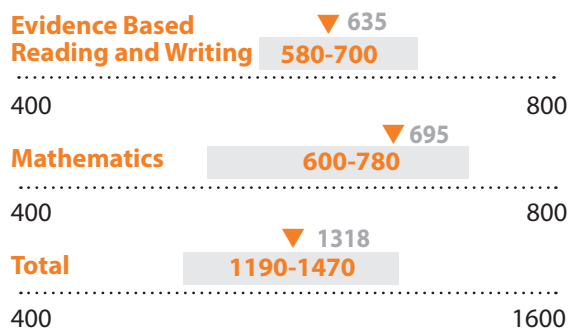
*AES strongly recommends students take the ACT Writing.

Mid-50th Percentile & Average Score



SAT Data for Class of 2021

Mid-50th Percentile & Average Score



Avg. Score **1318** **1600**

University Acceptances - Class of 2020

USA

Arizona State University-Tempe
Bates College
Baylor University
Blinn College
Brigham Young University -Idaho
Brigham Young University-Provo
Bryn Mawr College
California Lutheran University
California State University-San Marcos
Canisius College
Carnegie Mellon University
Case Western Reserve University
Claremont McKenna College
Cleveland State University
Colorado College
Columbia University
Cornell University
Cuny Bernard M Baruch College
Davidson College
Drexel University
Elmhurst College
Emory University
Fordham University
George Washington University
Georgetown University
Georgia Institute of Technology-Main Campus
Howard University
Illinois Wesleyan University
Imperial College London
Indiana University-Bloomington
Ithaca College
Johns Hopkins University
Lafayette College
Lehigh University
Miami University-Oxford
Middlebury College
New York University
Northeastern University
Northern Virginia Community College
Northwestern University
Oberlin College
Occidental College
Oregon State University
Pace University
Pennsylvania State University- Main Campus
Point Loma Nazarene University
Portland State University
Purdue University-Main Campus
Rutgers University-New Brunswick

Santa Clara University
Sarah Lawrence College
Soka University of America
St John's University-New York
Suny At Fredonia
Suny Buffalo State
Temple University
Texas Tech University
The University of Texas At Tyler
Tulane University of Louisiana
University of California-Berkeley
University of California-Davis
University of California-Irvine
University of California-Los Angeles
University of California-San Diego
University of California-Santa Cruz
University of Chicago
University of Colorado Boulder
University of Delaware
University of Denver
University of Illinois at Urbana-Champaign
University of Iowa
University of La Verne
University of Mary Washington
University of Maryland-Baltimore County
University of Maryland-College Park
University of Massachusetts-Amherst
University of Minnesota-Twin Cities
University of Mississippi
University of New Hampshire-Main Campus
University of North Carolina at Charlotte
University of Pittsburgh
University of Rochester
University of Southern California
University of Washington
University of Wisconsin-Madison
Vassar College
Virginia Commonwealth University
Virginia Polytechnic Institut and State University
Washington College
Willamette University
William Paterson University of New Jersey

AUSTRALIA

University of Melbourne

CANADA

Bishop's University
Carleton University
Queen's University
Ryerson University
The University of British Columbia
Trent University
University of Guelph
University of Ottawa
University of Toronto
University of Waterloo
York University

HONG KONG

City University of Hong Kong
The Chinese University of Hong Kong
The Hong Kong University of Science and Technology
The University of Hong Kong

KOREA **

Yonsei University

MEXICO

Monterrey Institute of Technology

NETHERLANDS

Erasmus University Rotterdam
Maastricht University
Rotterdam School of Management, Erasmus University
The Hague University of Applied Sciences
Tillburg University
University of Amsterdam
University of Groningen
University of Twente
Wageningen University
Willem de Kooning Academy

SINGAPORE

Lasalle College of the Arts
Nanyang Technological University
National University of Singapore
Yale-Nus

SWEDEN

KTH Royal Institute of Technology

UK

Aston University- Birmingham
Cardiff University
Durham University
Imperial College London
King's College London-University of London
Liverpool John Moores University
London School of Economics and Political Science-University of London
Loughborough University
Oxford Brookes University
Queen Mary University of London
SOAS University of London
The University of Edinburgh
University College London
University of Bath
University of Birmingham
University of Bristol
University of Dundee
University of East Anglia
University of Kent
University of Leeds
University of Leicester
University of Liverpool
University of Manchester
University of Nottingham
University of Southampton
University of St Andrews
University of Warwick

***Bold type indicates matriculation of one or more students.**

**** This data does not include gap years and applications after graduation that are still in progress.**



The American Embassy School
provides a balanced education defined by a
joyful pursuit of excellence
in academics, athletics, arts and service.

We enable each student to be an
inspired lifelong learner and a
responsible, compassionate global citizen.

aes

American Embassy School

An International Community