

COLLEGE

GUIDE

2020-2021

Helping students
Plan, Prepare,
and Pay for
College

WHAT'S
NEXT4U?
COLLEGE! GET2IT.

JSU
JACKSON STATE
UNIVERSITY®
Community College Relations
"Changing Minds, Changing Lives"

get2college
WOODWARD HINES EDUCATION FOUNDATION

What's Next4u?



Getting to college has never been more complicated or more important. As students like you are faced with figuring out what life after high school is going to look like, you are faced with a new set of challenges that make an already difficult process more

complex. But, the steps you need to take to explore your college and career options are no different than they were for the students who came before you—they just look a little bit different this time around. Get2College is here to help you take all the steps you need to take—complete your financial aid forms, prepare for the ACT, and explore your college and career options. Let's Get2It.

DO NOW

- ☐ Visit your favorite campuses
- ☐ Sign up for the ACT/SAT at act.org and sat.org
- ☐ Create your high school resume
- ☐ Job shadow or apply for internships
- ☐ Use Net Price Calculators to see the cost of attending college
- ☐ Seek out scholarship opportunities
- ☐ Use EFC calculator

AUGUST - SEPTEMBER

- ☐ Attend college fairs and meet your college recruiters
- ☐ Apply for college admission to meet priority deadlines
- ☐ Secure letters of recommendation for admission & scholarships, if needed

OCTOBER - DECEMBER

- ☐ Complete your FAFSA - studentaid.gov
- ☐ Complete the Mississippi financial aid application - msfinancialaid.org
- ☐ Meet scholarship deadlines

JANUARY - APRIL

- ☐ Submit requested documents to the college financial aid office
- ☐ Submit any required documents for Mississippi aid
- ☐ Review and compare financial aid award notices and make final decision
- ☐ Apply for student housing and pay deposit if required
- ☐ Sign up for orientation

MAY

- ☐ Request for your final transcript to be sent to the college you choose upon graduation
- ☐ Complete online loan counseling and sign a Master Promissory Note if you accept a student loan

COLLEGES IN MISSISSIPPI

COMMUNITY & JUNIOR COLLEGES

Coahoma CC
coahomacc.edu

Copiah-Lincoln CC
colin.edu

East Central CC
eccc.edu

East MS CC
eastms.edu

Hinds CC
hindsgcc.edu

Holmes CC
holmescc.edu

Itawamba CC
iccms.edu

Jones College
jcc.edu

Meridian CC
meridiancc.edu

MS Delta CC
msdelta.edu

MS Gulf Coast CC
mgccc.edu

Northeast MS CC
nemcc.edu

Northwest MS CC
northwestms.edu

Pearl River CC
prcc.edu

Southwest MS CC
smccc.edu

PUBLIC UNIVERSITIES

Alcorn State University
alcorn.edu

Delta State University
deltastate.edu

Jackson State University
jsu.edu

Mississippi State University 
msstate.edu

Mississippi University for Women
muw.edu

Mississippi Valley State University
mvsu.edu

University of Mississippi 
olemiss.edu

University of Southern Mississippi 
usm.edu

PRIVATE UNIVERSITIES

Belhaven University
belhaven.edu

Blue Mountain College
bmc.edu

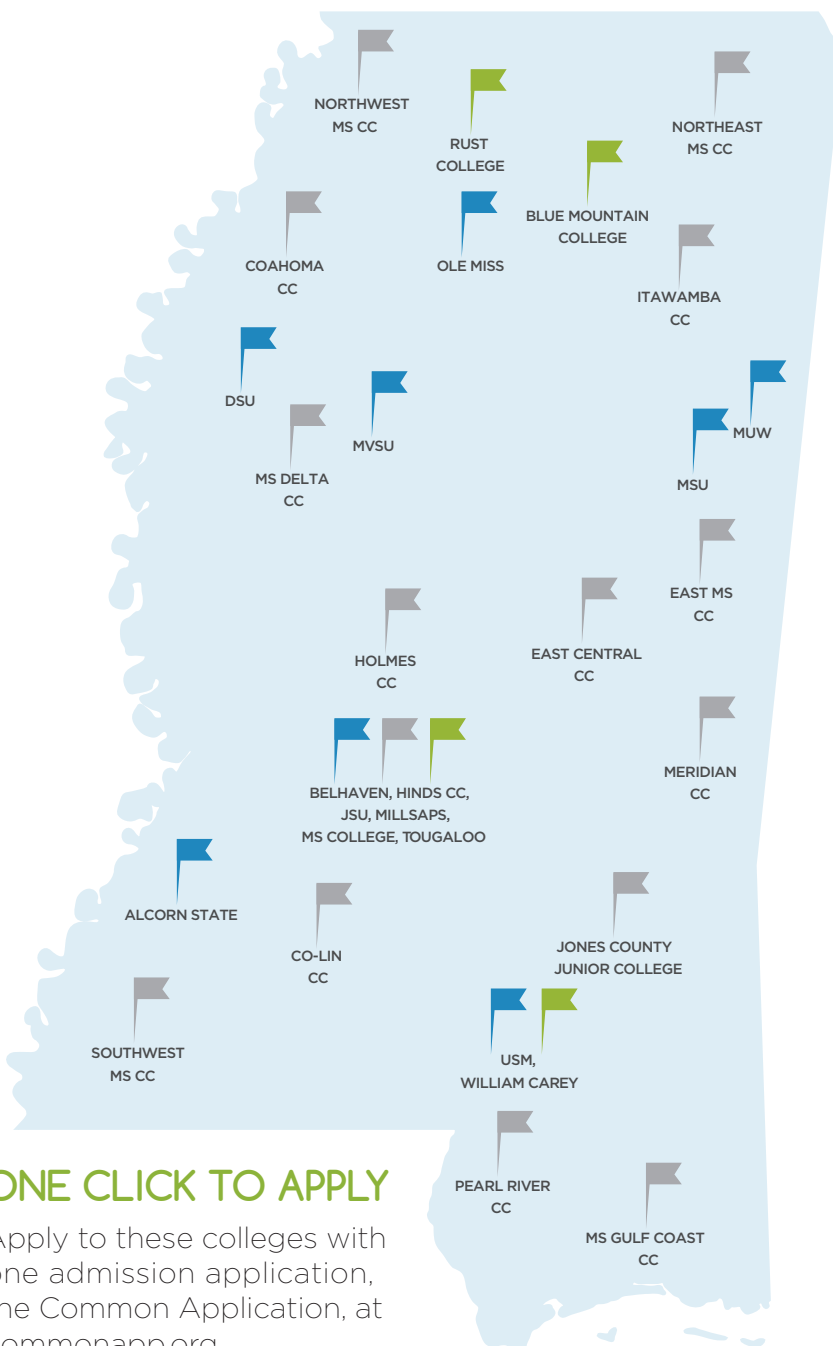
Millsaps College 
millsaps.edu

Mississippi College
mc.edu

Rust College
rustcollege.edu

Tougaloo College
tougaloo.edu

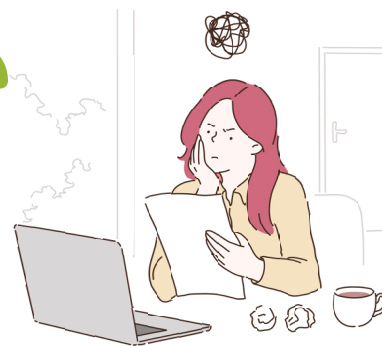
William Carey University
wmcarey.edu



ONE CLICK TO APPLY

Apply to these colleges with one admission application, the Common Application, at commonapp.org

Find a college



What matters most to you?

For some students, sports and activities are very important. Other students want a challenging academic environment. Some students want both. Answering questions like these will help you focus your college search and discover the right fit.

Degree Options

A certificate or technical degree
(Ex: Welding or Cosmetology)

Associate – 2 year
(Ex: Associate of Arts or Associate of Applied Science)

— **4+ years** —

Bachelor – 4 year

(Ex: Computer Science, Biology, or Journalism)

Master's degree
(Ex: Business Administration or School Counseling)

Doctorate
(Ex: Medical, Dentistry, Pharmacy, Physical Therapy, History, or Law)

Ask Yourself

Is the college I plan to attend offering only fully online classes?

Do I have the technology and connectivity to support virtual learning?

Is taking in-person classes a risk to the health and safety of me or a member of my family?

College Type

Public or private?

Community college or four-year institution?

Historically black college or university (HBCU)

All male or female student body

Religious affiliation

Military academy

College Size

What is the average class size for freshmen classes?

How many students live on campus?

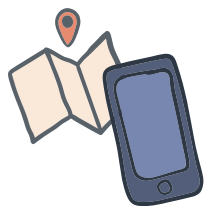
What percentage are from in-state vs out-of-state?

Is there diversity on campus (ethnic, geographic, family income)?

For-profit Colleges

If you plan to explore a for-profit college, first verify that your credits are eligible for transfer at a Mississippi community college or university. Also, be sure to compare the price of attending a for-profit college to similar programs offered at other schools.

College visits in the palm of your hand



College visits matter. Think of a college visit like test driving a car before you shell out thousands of dollars to buy it. All colleges look good online, but it is important to get a feel for whether or not the colleges you are interested in are actually right for you. Right now, visiting colleges isn't as easy as it used to be. More and more, colleges are offering virtual tours and online campus visits to interested students like you. We have a few tips for making the most of these virtual experiences.

- Do your homework first. Explore the college's website and take a virtual tour (if offered) as a jumping off point.
- Ask questions of your college admissions counselor. Find out about campus activities, athletics, dorm life, and student resources (like tutoring and career centers)—and how those things might look different, as a result of COVID.
- Connect with other students. Ask the admission counselor to connect you with a student in your proposed program of study or connect with students online through social media.
- If you can make a road trip, make sure the college is in a city or area where you would like to live.

Take the ACT

ACT or SAT scores are requested by most colleges and universities as a part of the admission process and may be used for scholarships, course placement, and academic advisory.



ACT for free

Four fee waivers are offered to help low-income students pay for the ACT. Ask your high school counselor if you qualify! Be aware that the waiver is used even if you don't test on the requested test date. You cannot re-use waivers.

**ACT prices and fees are subject to change. See act.org for more details*

Prepare for the ACT with Get2College

- Find helpful tips and tricks for the ACT in short 1-minute videos on our YouTube channel at bit.ly/g2cyoutube.
- ACT also offers free prep resources at academy.act.org.
- Request a Test Information Release (TIR) to receive a copy of your test questions and answers. This is only offered for December, April, and June test dates; however, this may change during the pandemic with testing changes.

ACT Superscoring



The ACT Superscore is beneficial because it takes the average of the four best subject scores from each ACT

test attempt and counts it as your official score.

Some colleges and universities in Mississippi will use the new ACT Superscore for college admission and scholarships. In addition, the MS Office of Student Financial Aid (MOSFA) will accept the ACT Superscore.

You **MUST** send your Superscore for colleges or MOSFA to receive it! And it is **FREE** to send. You will send your ACT Superscore through your online ACT account. Information regarding the new ACT Superscore can be found at act.org.

TEST DATES	REGISTRATION DEADLINE	LATE FEE REQUIRED
Sept 12, 2020 Sept 13, 2020 <i>(Sunday)</i> Sept 19, 2020	Aug 14	Aug 15-28
Oct 10, 2020 Oct 17, 2020 Oct 24, 2020 Oct 25, 2020 <i>(Sunday)</i>	Sept 17	Sept 18-25
Dec 12, 2020	Nov 6	Nov 7-20
Feb 6, 2021	Jan 8	Jan 9-15
Apr 17, 2021	Mar 12	Mar 13-26
June 12, 2021	May 7	May 8-21
July 17, 2021	June 18	June 19-25

The College Preparatory Curriculum

For class of 2021 (16½ units)



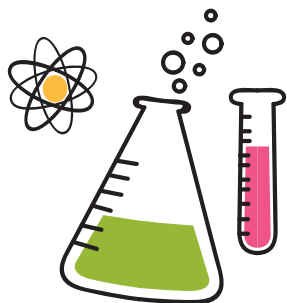
English 4 Units

All must require substantial communications skills (i.e., reading, writing, listening, and speaking). Compensatory Reading and Writing may not be included.



Arts 1 Unit

Includes any one Carnegie unit (or two 1/2 units) of visual and performing arts course(s) meeting the requirements for high school graduation.



Mathematics | 3 Units

ALGEBRA I or equivalent

MATH HIGHER THAN ALGEBRA I
(2 units)

Science | 3 Units

BIOLOGY I or equivalent

SCIENCE HIGHER THAN BIOLOGY I
(2 units)



Social Studies | 3 Units

US HISTORY

WORLD HISTORY

US GOVERNMENT (1/2 unit)

ECONOMICS (1/2 unit) or INTRODUCTION
TO WORLD GEOGRAPHY (1/2 unit)

Technology 1/2 Unit

A course that emphasizes the use of technology as a productivity tool. Instruction should include utilizing various forms of technology to create, collaborate, organize, and publish information. The application of technology as a productivity tool, rather than specific hardware and/or software packages should be the focus of the course.

Advanced Electives 2 Units

Option 1: Foreign Language I and II

Option 2: Foreign Language I
& Advanced World Geography

Option 3: Any combination of English, Mathematics higher than Algebra I, Science higher than Biology I, Advanced Elective category, any AP course, any IB course.

Take one additional
advanced elective
to be eligible for

THE HELP GRANT.



Ask your
counselor!



CLASS OF 2022!

The College Prep Curriculum requirement for the entering class of 2022 includes two additional units to equal 18 1/2 units. In addition to the classes to the left, class of 2022 should expect to take

- + 1 Unit Math**
- + ½ Unit Social Studies**
- + ½ Unit Technology**

Requirements for college admissions

If you want to go to one of Mississippi's eight public universities, you should meet ONE of the following criteria.



TRACK 1	TRACK 2	TRACK 3	FOR ATHLETES
<p>3.2 GPA <i>minimum</i></p> <p>— + —</p> <p>CPC <i>College Preparatory Curriculum</i></p> <p>Complete CPC with a minimum 3.2 high school grade point average (GPA) on the CPC.</p>	<p>16+ ACT</p> <p>— + —</p> <p>2.5 GPA <i>minimum or top 50% of class</i></p> <p>— + —</p> <p>CPC <i>College Preparatory Curriculum</i></p> <p>Complete CPC with a minimum 2.50 high school GPA on the CPC or a class rank in the top 50% and a score of 16 or higher on the ACT* (Composite).</p>	<p>18+ ACT</p> <p>— + —</p> <p>2.0 GPA <i>minimum</i></p> <p>— + —</p> <p>CPC <i>College Preparatory Curriculum</i></p> <p>Complete CPC with a minimum 2.0 high school GPA on the CPC and a score of 18 or higher on the ACT* (Composite).</p>	<p>NCAA <i>National Collegiate Athletic Association</i></p> <p>NCAA Division I standards for student athletes who are “full-qualifiers” or “academic redshirts” are accepted as equivalent to the admission standards established by the Board.</p> <p><i>For more details, visit eligibilitycenter.org.</i></p>

**In lieu of ACT scores, students may submit equivalent SAT scores.*



Don't meet the criteria for admission

Students who do not meet the above criteria are still eligible for admission if they participate in a Summer Development Program (SDP) on a university campus. Students will enroll in one or more deficient subject areas (English, reading, or mathematics) based on ACT subscores and/or ACCUPLACER scores. They receive training in study skills and counseling to enhance their ability to succeed at the university. Due to COVID-19, universities are testing new delivery systems. Check with the individual university for the 2021 summer or fall options.

Four ways to pay for college



1

Private Scholarships

Begin research as early as junior year. Many scholarships are not posted until the fall of your senior year, but deadlines start popping up as early as December. Ask your high school counselor or career center manager for a list of scholarships.

Browse popular scholarship sites like:

- bigfuture.collegeboard.org
- fastweb.com
- get2college.org/scholarships



2

College Scholarships and Grants

Most scholarships come directly from individual colleges. These may be based on academic merit, leadership, community service, financial need, or talent-based such as athletics, art, or music. Complete applications for admission in the fall of your senior year. Many are open August 1. You must be accepted for admission in order to receive scholarships and financial aid. Most admission applications can be found online at each college's website. **Make sure you meet all priority deadlines!**

Check out our website



Live chat
any question you have.

Get2College scholarship search tool

provides a quick way to look for local, state, or national scholarships in one location.

Expected Family Contribution (EFC) Calculator

will help you understand what the college might expect your family to contribute to the cost of college, which allows you to begin making a plan for how to pay for college.

Sign up for two-way text messaging

to receive reminders about when to apply for college and financial aid, as well as tips about admissions, campus visits, and the ACT.



If you attend a community college, join Phi Theta Kappa.

Eligible students will receive an invitation if membership requirements are met—typically 3.5 GPA and 12 credit hours. Phi Theta Kappa members are eligible for transfer scholarships at Mississippi four-year colleges and universities.

**UMMC does not currently offer PTK scholarships.*



PHI THETA KAPPA
HONOR SOCIETY



3

Federal Aid

The FAFSA

The FAFSA is the Free Application for Federal Student Aid and is required to receive any federal funds. Federal funds include Pell Grant and other need-based and non-need-based grants, work-study program, and student loans. The FAFSA may also be used for awarding some state aid, institutional aid, and even private scholarships.

If you have any special circumstances, contact the Financial Aid Office of the school you plan to attend.

Some schools may require the CSS/Financial Aid Profile® in addition to the FAFSA.



4

Mississippi Aid

MAAPP

The Mississippi Office of Student Financial Aid offers grants based on merit and financial need to full-time students attending eligible Mississippi colleges and universities. To receive any state assistance, you must take and pass at least 15 hours each semester (Fall/Spring). If students meet the requirements for more than one grant, students will be awarded the state grant with the highest amount.

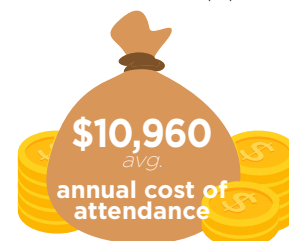
The application is available at **msfinancialaid.org** or you can link to the Mississippi application after completing the FAFSA and most of your info will be prefilled.

Cost of Attendance

is tuition, housing, meals, fees, books, transportation, and your other living expenses.

Community colleges

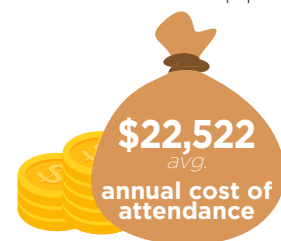
in Mississippi



\$3,070 - \$3,830
annual tuition
2020-2021

Public universities

in Mississippi



\$7,667 - \$8,910
annual tuition
2020-2021

Tuition and fees are subject to change.

**WHAT'S
NEXT4U?
GET2COLLEGE.ORG**



Complete the FAFSA at studentaid.gov



It is important to complete the FAFSA, and you can file as early as October 1 of your senior year. Make sure to file the FAFSA before your college's priority filing deadline to qualify for the most money.

Check with your counselor to see if Get2College or your local community college is hosting a FAFSA Completion Event. You may also have FAFSA support in your College & Career Readiness course. Get2College Centers are always available to make an appointment for remote online, screen share assistance. As always, all of our services are free!

Documents you'll need:

Parents' and student's:

Legal Names

☐

Social Security Numbers

☐

Dates of Birth

☐

2019 Federal Income Tax Return (the 1040 form)

if your parents or parent and step-parent file separately, get copies of both

☐

Email Addresses

Do not use high school email

☐

2019 W-2 forms

& other records of money earned

☐

Driver's License Numbers

☐

The FAFSA is FREE

If a website asks you to pay to fill it out, you're not dealing with the official FAFSA site, studentaid.gov.

Important note

Provide information for parents with whom you live. You will need marriage date, divorce date, or separation date.

If you are in a legal guardianship, bring court papers for the guardianship.

Do not bring information on a grandparent, aunt, or anyone other than a parent unless you have been legally adopted (even if someone else claims you on the federal tax return).

Mississippi Financial Aid

msfinancialaid.org



15 on the ACT

MTAG

Mississippi Tuition Assistance grant

Application deadline: Sept 15

Freshmen and sophomores receive up to \$500/year, and juniors and seniors receive up to \$1000/year. Eligible students meet the following criteria:

- Have a cumulative GPA of at least 2.5
- Score a minimum of 15 on the national ACT or equivalent score on the national SAT
- Are not full Pell Grant eligible

29 on the ACT

MESG

Mississippi Eminent Scholars grant

Application deadline: Sept 15

Covers up to \$2500/year. Eligible students meet the following criteria:

- Have a cumulative GPA of at least 3.5
- Score a minimum of 29 on the national ACT or equivalent score on the national SAT or are National Merit Finalists or Semi-Finalists

Supporting documents deadline for MTAG & MESG: Oct 15

20 on the ACT

HELP

Higher Education Legislative Plan

Application deadline: March 31

Supporting documents deadline: April 30

Covers **full tuition and required fees** for no more than eight semesters at a public institution. Participants attending a private institution in Mississippi will receive an award amount equal to the award of a student attending the nearest Mississippi university. Eligible students meet the following criteria:

- Have cumulative GPA of at least 2.5
- Score a minimum of 20 on the national ACT or equivalent score on the national SAT
- Take the College Prep Curriculum (pg 6) plus one advanced elective
- Meet income requirements (\$39,500 for family with one dependent plus \$5,000 for each sibling under the age of 21.)
- Be Pell eligible



After applying for a Mississippi grant

Check the status of your application through your student MAAPP (Mississippi Aid Application) account at msfinancialaid.org. Submit any missing documents requested. After March, verify that your counselor has individually certified your coursework for the HELP Grant and submitted your GPA and ACT score by April 30.



After submitting your FAFSA

The processed FAFSA results will be sent to the colleges you listed on the FAFSA, and the college Financial Aid Office will determine the amount of financial aid you will receive.

If you provided an email on the FAFSA, you will receive an email within 1-3 days with a secure link to access your Student Aid Report online. If you did not provide an email, you will receive the SAR in the mail. Review your Student Aid Report to make sure the information is correct. Got questions about the FAFSA? Call 1.800.4FEDAID (1.800.433.3243), or contact Get2College.



Verification

Some financial aid applications will be selected for a federally required verification process. This means that you will be expected to provide supporting documentation for the information on your FAFSA. You may be asked to verify numbers from your FAFSA such as household size, number in college, or untaxed income. You may be asked to upload your tax return directly from the IRS using the FAFSA IRS Data Retrieval tool, or to provide an IRS Tax Return Transcript by requesting online at [irs.gov](https://www.irs.gov) or by calling 800.908.9946.

The information that the college requests must be sent to the financial aid office at the college. Most colleges will not make a financial aid award for you until verification is complete.

Financial aid offers

The financial aid offer will tell you what financial aid you are eligible to receive, how to accept, and the next steps in the process.

Typically, schools will allow you to accept your offer online through your student portal. However, you may receive a financial aid offer by mail. You should determine which of the awards you will accept and which you will decline. For student loans, you can choose the amount that you would like to accept. There may be a deadline for accepting financial aid.



Kierstan
Get2College
Counselor

Renew your FAFSA and Mississippi aid annually

Renew your financial aid with our step-by-step tutorial on our Get2College YouTube channel. Contact a Get2College counselor for more complex applications.

Sample financial aid offer



Estimated Cost of Attendance	\$25,000
Expected Family Contribution	-\$1,000
Total Financial Need	\$24,000

Award Description	Fall	Spring	Total	Accept	Decline	Partial
Pell Grant	\$2,698	\$2,697	\$5,395	<input checked="" type="checkbox"/>	<input type="checkbox"/>	
Help Grant	\$4,359	\$4,359	\$8,718	<input checked="" type="checkbox"/>	<input type="checkbox"/>	
Academic Scholarship Excellence	\$500	\$500	\$1,000	<input checked="" type="checkbox"/>	<input type="checkbox"/>	
Work Study	\$600	\$600	\$1,200	<input checked="" type="checkbox"/>	<input type="checkbox"/>	
Direct Loan - Subsidized	\$1,750	\$1,750	\$3,500	<input checked="" type="checkbox"/>	<input type="checkbox"/>	<input type="checkbox"/> _____
Direct Loan - Unsubsidized	\$1,000	\$1,000	\$2,000	<input type="checkbox"/>	<input checked="" type="checkbox"/>	<input type="checkbox"/> _____
TOTAL			\$21,813			

Student loans

If you accept federal student loans, you will need to follow the college's process for completing the Master Promissory Note (MPN) and Loan Entrance Counseling. Federal Student Aid will also require the Annual Student Loan Acknowledgment at **studentaid.gov**.

Calculating college cost

THE BASICS

Tuition & fees.....\$ _____
 Housing.....\$ _____
 Meals.....\$ _____
 Books/supplies.....\$ _____

PERSONAL/CLOTHING

Clothing purchase\$ _____
 Laundry.....\$ _____
 Toiletries\$ _____
 Haircuts.....\$ _____

UTILITIES

Water.....\$ _____
 Electricity/Gas.....\$ _____
 Cell phone\$ _____
 Spotify, Netflix.....\$ _____
 Wifi.....\$ _____

TRANSPORTATION

Car payment.....\$ _____
 Gas and oil changes\$ _____
 Parking permit\$ _____
 Car insurance.....\$ _____
 Flights, train or bus fares.....\$ _____

SOCIAL

Fraternity or sorority dues\$ _____
 Movies, concerts, etc.....\$ _____
 Eating out, snacks etc.....\$ _____
 Miscellaneous\$ _____

Cost of College \$ _____
or Cost of attendance



Stephen Brown
Get2College Counselor

DO THE MATH

The net cost is the total cost of attendance minus all grants and scholarships. Call Get2college if you need information on additional funding.

Cost of College

\$ _____

MTAG/MESG/HELP Grant	—	\$ _____
Pell Grant	—	\$ _____
Scholarships/Awards		
Award 1 _____	—	\$ _____
Award 2 _____	—	\$ _____
Award 3 _____	—	\$ _____
Award 4 _____	—	\$ _____

Net Price

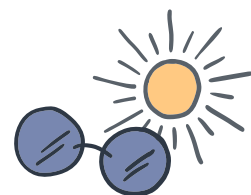
HOW TO PAY THE REMAINING COST (NET PRICE)

The remaining cost, net price, is often paid with student savings, a part-time job, or parent contribution. Federal student loans or parent loans (PLUS) are an additional funding resource. Borrow wisely.

The summer before college



College isn't as easy as just showing up for classes on the first day. It is important that you use the summer months to get everything in order so that you are ready to start your new life as a college student. Get a calendar or download an app that will help you stay organized.



Housing

If you plan to attend class in person and live on campus, make sure you meet housing deadlines and pay deposits, if required.

Summer bridge programs

Think of summer bridge programs like summer camps that prepare you for college. These programs give students a chance to live in dorms, learn college traditions, and get to know the important people, places, and things on campus. It is a great opportunity to get your feet wet before diving in!

Orientation

Orientation typically happens over the summer months and can either be in-person or virtual. During orientation, you will register for classes, hear from current students, learn more about your major/field of study, and tie up any loose ends. Orientation Pro Tip—The earlier you attend orientation, the better the selection of classes you will have.

Signing up for classes

Every student must fulfill general education requirements before graduating with a degree. As a freshman, if you have not declared a major, taking your general education classes will give you the opportunity to explore different subjects and fields of study that may interest you. Get to know your advisor, who will help guide you through your course selection.

Buying books

Your campus bookstore is the easiest and fastest way to buy the books you need—but it may also be the most expensive. Some schools offer a book rental option. However you choose to do it, be sure to get the books and other resources you need.

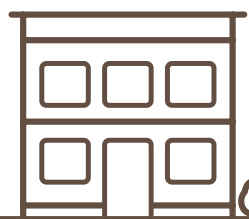
You've Got Mail

After you are admitted, your college will begin communicating with you through a school-issued email address and student portal. Check your messages often and log into your school portal for important updates.

LET'S START PACKING !



Notable campus offices



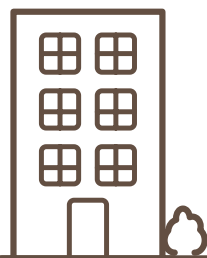
Financial Aid Office

Seek this office if you have questions or concerns about your FAFSA, loans, and financial aid.



Dean of Students Office

Here is where you express your campus concerns such as problems with your roommate or how to get involved on campus.



Registrar's or Records Office

Academic records are housed here. This is where you add or drop a class, request transcripts, and make sure you are on track for graduation.



Bursar's or Business Office

This is the office where you make a payment toward your tuition balance.

Terms you need to know

Academic probation

Any student not maintaining satisfactory academic progress toward his/her educational objectives will be placed on probation for the semester which can affect financial aid and scholarship eligibility.

Credit hours

College courses are measured in credit hours. One credit hour equals one classroom hour per week for the whole semester. College classes are typically 3 credit hours.

Drop and Add

Students can add or drop courses from their class schedule with written approval from designated college officials. Schedule changes may be subject to fees.

Academic suspension

Suspension follows academic probation if a student fails to maintain the required minimum cumulative GPA. The student will be dismissed from the college for up to one semester with set stipulations for re-entry.

Major/Minor

A major is a student's chosen field of study. A minor is the student's secondary chosen field of study.

Withdrawal

Students can withdraw from courses during the semester with the appropriate written approval. Schedule changes are subject to fees and may affect scholarship and financial aid eligibility. Mississippi financial aid requires enrollment and completion of 15 hours/semester.

Curriculum

An established outline of classes determined by an institution for completion of a program of study leading to a degree or certificate.

FERPA

The Family Educational Rights and Privacy Act is a federal policy that protects the privacy of student records. FERPA governs the release and access to these records. The student is asked prior to enrollment whether the parents can access the student's academic status.

Syllabus

A document crafted by the professor that outlines assignments, expectations, dates, and policies specific to that course of study.

Satisfactory Academic Progress (SAP)

These standards ensure that you are successfully completing your course work and can continue to receive financial aid.

Explore growing Careers

Mississippi's Largest Employers

1. Huntington Ingalls Industries
Pascagoula, MS
2. Keesler Air Force Base
Biloxi, MS
3. University of Mississippi Medical Center
Jackson, MS
4. Baptist Memorial Health Care
Memphis, TN
**This employer has locations throughout Mississippi.*
5. Nissan North America Inc.
Canton, MS
6. North MS Health Services
Tupelo, MS
7. Sanderson Farms, Inc.
Laurel, MS
8. John C. Stennis Space Center
Hancock County, MS
9. Mississippi State University
Starkville, MS
10. University of Mississippi
University, MS
11. Tyson Foods Inc.
Carthage, MS
12. Hancock Whitney
Gulfport, MS
13. Howard Industries Inc.
Laurel, MS
14. Memorial Hospital at Gulfport
Gulfport, MS
15. Forrest General Hospital (Forrest Health)
Hattiesburg, MS
16. St. Dominic Hospital
Jackson, MS
17. Beau Rivage Resort & Casino
Biloxi, MS
18. Koch Foods
Morton, MS
19. Merit Health
Jackson, MS
20. AT&T Mississippi
Jackson, MS

High-demand jobs in Mississippi

Career	Annual avg. salary
Financial Managers Job Zone 5	\$103,300
General & Operations Managers Job Zone 4	\$80,390
Accountants & Auditors Job Zone 4	\$59,960
Registered Nurses Job Zone 4	\$57,700
Human Resources Specialists Job Zone 4	\$51,290
Electricians Job Zone 3	\$49,260
Welders, Cutters, Solderers, & Braziers Job Zone 3	\$44,270
Elementary School Teachers, Except Special Education Job Zone 4	\$44,230
Plumbers, Pipefitters, & Steamfitters Job Zone 3	\$44,040
Machinists Job Zone 3	\$43,940
Licensed Practical & Licensed Vocational Nurses Job Zone 3	\$37,280
Police & Sheriff's Patrol Officers Job Zone 3	\$35,520
Child, Family, & School Social Workers Job Zone 4	\$34,390

Job Zone:

Zone 5: A bachelor's degree is the usual minimum but some require advanced degrees.

Zone 4: Many require a bachelor's degree but some do not.

Zone 3: Most require a certificate from a community college, related on-the-job experience, or an associate degree.



Get2College, a program of the Woodward Hines Education Foundation, is committed to helping students navigate the complex process of college. Make an appointment for virtual counseling or contact one of our centers for more information.

Gulf Coast Get2College Center

715 Cox Avenue, Ocean Springs, MS
228.875.4441 | gulfcoast@get2college.org

Jackson Get2College Center

2616 Lakeward Drive, Jackson, MS
601.321.5533 | jackson@get2college.org

North MS Get2College Center

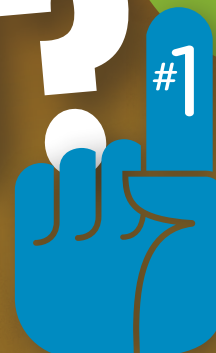
5699 Getwell Road, Bldg H, Ste 3
Southaven, MS
662.349.2789 | nms@get2college.org



Available
statewide for
**virtual
appointments**

WHAT'S NEXT4U?

GET2IT.



first u
haf-ta
fafsa™

Whether it's a 4-year university or technical program at a community college, we're here to help. For free resources or to schedule an appointment, please visit us at get2college.org