

CONSULTANTS:
CIVIL ENGINEER:
DEWOLFE ENGINEERING ASSOCIATES
317 RIVER STREET
MONTPELIER, VT 05601-1576
T: (802) 223-4727
STRUCTURAL ENGINEER:
DEWOLFE ENGINEERING ASSOCIATES
317 RIVER STREET
MONTPELIER, VT 05601-1576
T: (802) 223-4727
MECHANICAL ENGINEER:
KURT MAGNUSON, P.E.
MECHANICAL SYSTEMS ENGINEERS
10 FOREST FALLS DRIVE - SUITE #10
YARMOUTH, MAINE 04096
T: (207) 846-1441 C: (207) 615-9375
ELECTRICAL ENGINEER:
TIM MATTHEWS, P.E.
SWIFTCURRENT ENGINEERING SERVICES
10 FOREST FALLS DRIVE, UNIT 8B
YARMOUTH, MAINE 04096
T: (207) 847-9280 C: (207) 847-9281



KEY PLAN:

| REVISION | DATE | COMMENTS |
|----------|------|----------|
| | | |
| | | |
| | | |
| | | |
| | | |
| | | |
| | | |
| | | |
| | | |
| | | |

PROJECT:
**BARRE UNIFIED UNION
SCHOOL DISTRICT**
**SPAULDING EDUCATIONAL
ALTERNATIVES FACILITIES**
91 ALLEN STREET
BARRE, VT 05641

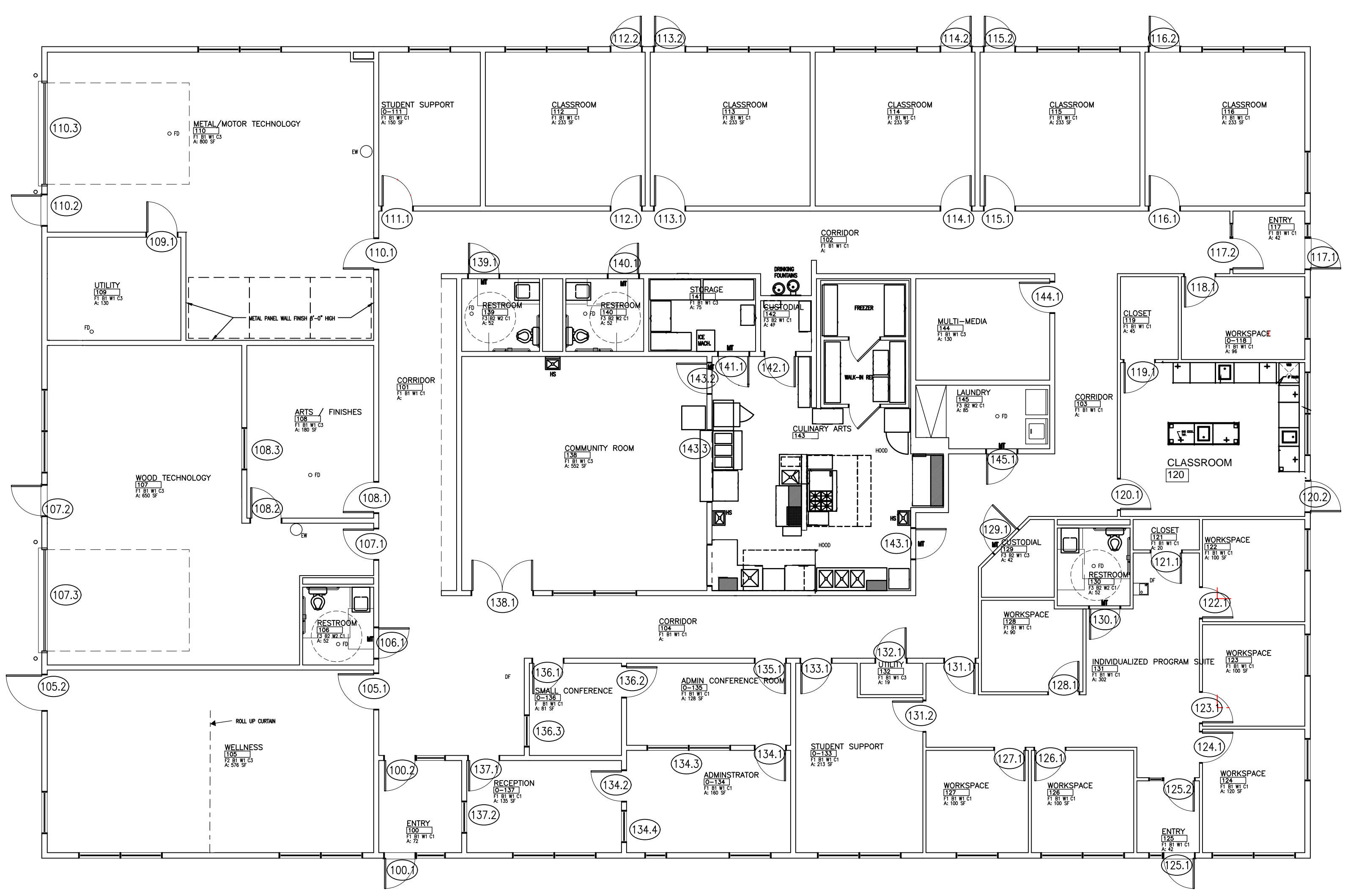
ISSUED:
FOR CONSTRUCTION

DRAWING TITLE:
CODE PLANS

DATE:
24 JULY 2020

SHEET NUMBER:

A0.2



01 FIRST FLOOR PLAN
SCALE: 1/8" = 1'-0"