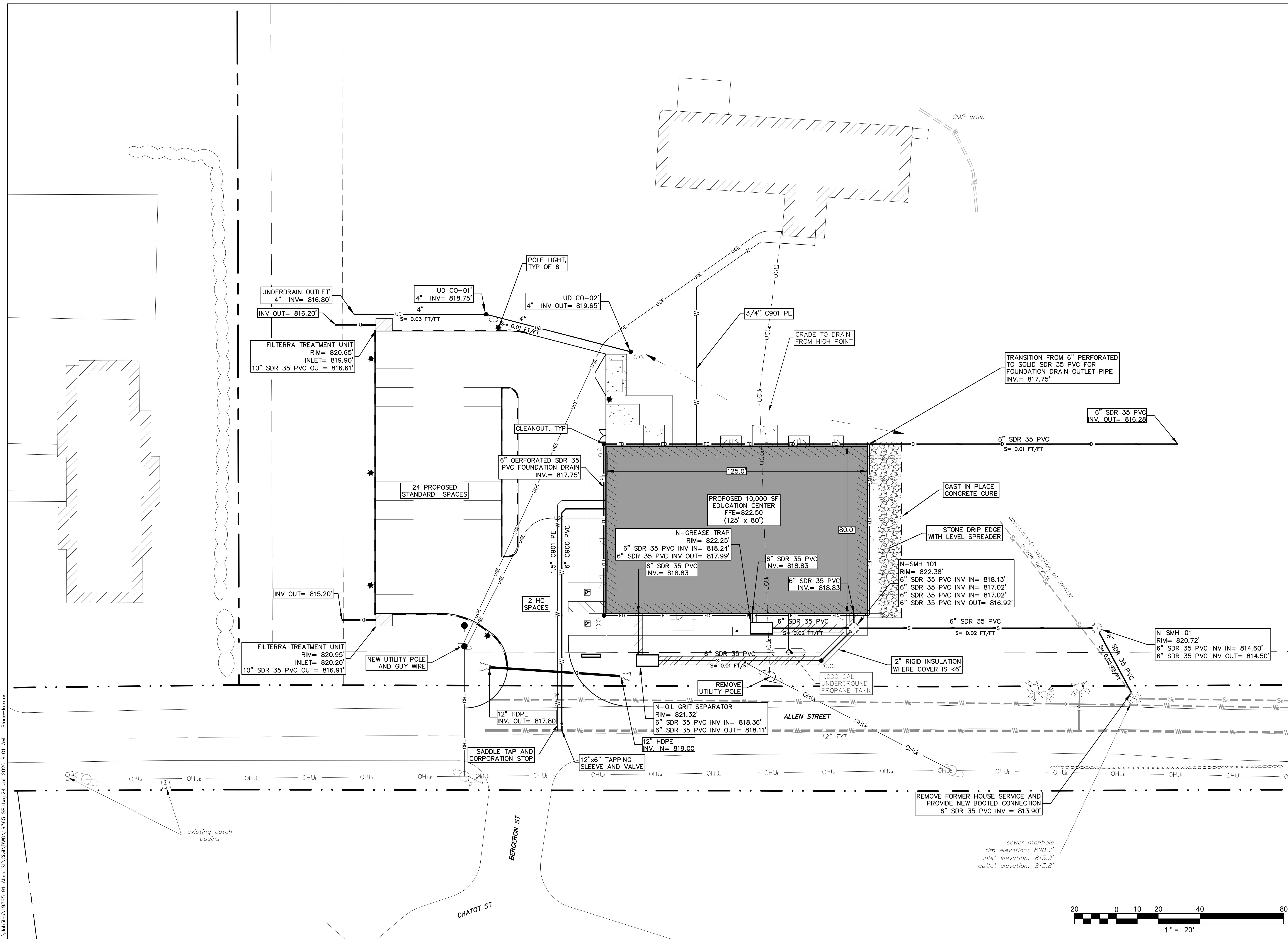


GRID

Civil & Structural Engineers
DeWolfe
ENGINEERING ASSOCIATES
PROFESSIONAL CORPORATION
1,802-223-4727 1,802-223-4740 www.dewolfe.com
317 River St., P.O. Box 1576 Montpelier, VT 05601-1576



no.	date	revision
1	7/24/2020	CONSTRUCTION
2	8/4/2020	Addendum 1

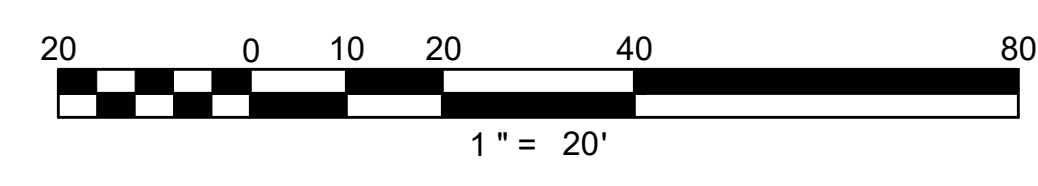


project name: **SPAULDING EDUCATIONAL ALTERNATIVES FACILITY**
 project location: **91 ALLEN STREET BARRE, VERMONT**
 client: DAVID LAURIN ARCHITECT

project number: 19365
 drawn by: RBC/JJS
 checked by: BMLK
 scale: 1" = 20'
 date: 15 JUNE 2020
 released for: CONSTRUCTION

sheet description: **UTILITY PLAN**

C1.03



G:\Utilities\19365_91_Allen_ST\Civil\DWG\19365_SP.dwg 24 Jul 2020 9:01 AM Blinn-komas