



EDEN PRAIRIE PROUD

Spring 2020 Third-Party Survey Results

PARENTS

100%

report receiving a warm welcome when entering school

97%

believe our community receives a good value on its investment in our schools

98%

quality of education rating

98%

quality teacher rating

95%

of parents have never considered moving their student out of Eden Prairie Schools

95%

trust EP to do what is right

98%

quality rating of district technology and digital resources

What did parents think of spring 2020 distance learning?

87%

45%

Ep

State of MN

% rated the quality of distance learning as excellent or good

NICHE.COM

ONLY STRAIGHT "A" DISTRICT IN MINNESOTA

| | | | | | | | | | |
|-----------|-----------|-----------------|----------------|-----------|-----------|--------------|--------------------|-----------|-----------|
| A+ | A+ | A+ | A+ | A+ | A- | A+ | A+ | A+ | A+ |
| Academics | Teachers | Health & Safety | Administration | Food | Diversity | College Prep | Clubs & Activities | Sports | Resources |

RECENT AWARDS

PRINCIPAL OF THE YEAR, HENNEPIN DIVISION - **Nathan Swenson** (CMS), Minnesota Association of Secondary Principals

EDUCATION MINNESOTA'S TEACHER OF THE YEAR, FINALIST - **Maria Villavicencio** (Eden Lake Elementary)

BEST PRINCIPAL - **Amy Kettunen Jahnke** (Cedar Ridge Elementary), 2020 Sun Media Reader's Choice Award

BEST TEACHER - **Christi Kaehn** (Cedar Ridge Elementary), 2020 Sun Media Reader's Choice Award

BEST PUBLIC SCHOOL - **Cedar Ridge Elementary**, 2020 Sun Media Reader's Choice Award

OUTSTANDING CENTRAL OFFICE LEADERSHIP AWARD - **Dr. Stacie Stanley** (Assoc. Supt.), Minnesota Association of School Administrators

NATIONAL MERIT SEMIFINALISTS



Andrew Peng, Anisha Singhatwadia, Anna Patten, Devna Panda, Ishan Shetty, James Sweeney, Martin Zhou, Pranav Vadhul, Prayag Rajagopalan



SHOW YOUR WINGS

Name: Banji Olofinboba **Grade:** 8

School: Central Middle School

My Wings: What inspires me at CMS are the great teachers. They are always encouraging and pushing us to strive for excellence; you can tell that they really care about us and want us to succeed. You can always count on them when you need help. With teachers like them, it's hard not to want to bring your "A game" when it comes to academics!



MARK YOUR CALENDARS

- **Oct. 15-16:** No School - MEA
- **November Kindergarten Kick-Off Events:**
 - **Nov. 9:** Cedar Ridge Elementary
 - **Nov. 10:** Forest Hills Elementary
 - **Nov. 12:** Oak Point Elementary
 - **Nov. 16:** Prairie View Elementary
 - **Nov. 17:** Eden Lake Elementary
 - **Nov. 19:** Eagle Heights Spanish Immersion
- **Nov. 17:** CMS Preview Night
- **Nov. 18:** EPHS Preview Night

EXCERPT **Ep** EXPRESS

EDEN PRAIRIE NEWS IN 30 SECONDS



01 Nourishing Learning Minds

Eden Prairie Schools is providing free breakfast and lunch for all students up to age 18 (including TASSEL students). Learn more about our meals program at edenpr.org/child-nutrition.



Online Community Education Catalog 02



Community Education catalogs have moved online instead of arriving by mail. Check out our variety of course offerings for all ages at edenprairie.ce.eleyo.com

03 Now Hiring!

Are you interested in working for Eden Prairie Schools? Check out our open positions such as Permanent Building Substitute Teachers, Elementary Teachers, Paraprofessionals, and more at edenpr.org/jobs.



EDEN PRAIRIE SCHOOLS
Inspiring each student every day

INSPIRING NEWS

OCTOBER 2020 / VOL. 2 • ISSUE 1

Residential Customer Local

ECRWSS

PRESORTED
NON-PROFIT
U.S. POSTAGE PAID
TWIN CITIES, MN
PERMIT # 7164

8100 School Road
Eden Prairie, MN 55344
www.edenpr.org
952-975-7000



A MESSAGE

from the Superintendent



EP students continue to thrive, even through these times

Eden Prairie Schools began planning this spring for the start of school in the fall. We had to be ready for direction from Gov. Tim Walz, which was announced on July 30. The governor's guidance was that schools would use a model for learning based on the rate of COVID-19 cases in their county. Four weeks after the governor's decision, Eden Prairie Schools began teaching kindergarten and grade 1 students in person Monday through Friday with social distancing. Students in grades 2 through 12 are in a hybrid model where they attend in person two days a week and learn online three days a week. We also opened EP Online, our newest school, which will stay in place as an online option after the pandemic. Online has proven to be a popular option during this time, with enrollment of more than 2,000 students in grades K-12. EP Online is fully staffed by Eden Prairie's highly-regarded teachers.

The flexibility, dedication and tenacity of our teachers and staff has been remarkable during this time. This speaks to the strength of our Eden Prairie community and our willingness to come together during difficult times. The support of our community over the years through volunteers, public-private partnerships and referendum elections has put our district in a position to remain one of Minnesota's leading school districts. In a community survey, 87 percent of families rated Eden Prairie Schools' experience with distance learning this spring as good or excellent. While many families outside of Eden Prairie expressed frustration with distance



Dr. Josh Swanson
Superintendent

learning, our teachers and staff continued to deliver inspiring learning experiences.

As we go through this school year, we will continue to monitor COVID-19 case data. Our learning model could change based on that information. We could increase the amount of face-to-face learning or more online learning could be in place, depending if the rate of illness increases or declines. Our local decisions will be based on input from the Minnesota departments of health and education.

As we started school this fall, families had choices on whether to start the school year in our hybrid model or join EP Online, our full-time online school. This focus on individual needs is a hallmark of an Eden Prairie Schools education. Even in this pandemic, our staff are focused on providing the best possible learning experiences for students, and on supporting our families.

LEADING THE WAY WITH EP ONLINE



Full-time, online is now part of the outstanding options offered in Eden Prairie Schools. Eden Prairie Schools was developing its online school and then the pandemic happened. In response, the district accelerated plans and launched EP Online this school year. Dr. Raymond Diaz joined Eden Prairie Schools as the Digital Curriculum and Online Learning Instructional Excellence Director. He is leading EP Online to a first year of success with more than 1,100 students enrolled in the K-6 program. During the pandemic, EP Online for grades 7-12, Eagle Heights Spanish Immersion and Mosaic (our gifted program), is a livestreaming model where teachers broadcast their in-person lessons to students who are online.

While EP Online started as part of the district's response during the COVID-19 pandemic, it will be a way, in the future, to offer Eden Prairie Schools' personalized learning and exceptional teachers to more students.

CONTINUED EXCELLENCE IN EP!

HEALTH & SAFETY

The health of our staff and students is our top priority.



Hygiene & social distance

- All staff and students have face coverings from Eden Prairie Schools, and are expected to wear them at all times.
- Each high school and middle school classroom has been provided hand sanitizer. Elementary classrooms have either hand sanitizer or sinks.
- Eden Prairie Schools has installed floor markings, plexiglass shields, re-arranged classrooms, limited mixing of students across classrooms, and many signs about social distancing and hygiene.

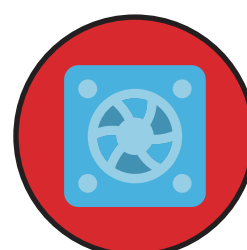


Health checks

- Each student will have their temperature checked upon arriving at school. Students with a temperature of 100.4 or higher will be evaluated by the nurse and sent home.
- Staff will self-monitor their temperature and must respond to a daily health screening questionnaire.

Cleaning

- Staff have access to spray bottles with a cleaning solution and wash cloths/paper towels to clean high touch areas in their spaces. This is supplemental to extensive cleaning by custodial staff.
- There is more frequent cleaning of high touch areas such as door handles, front office counters, handrails, elevator buttons, vending machines, and tables and chairs in common areas.
- Bus seats and hand rails will be cleaned between routes.



Ventilation

- Air handling units now pull more outside air and the air in buildings recirculates more frequently.
- Air filters in air handling systems will be replaced with hospital-grade filters.

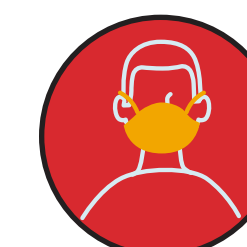
HYBRID LEARNING

EP Schools started the school year in hybrid learning for grades 2-12. K-1 students are in person, Mon. through Fri., with social distance.

Hybrid schedule grades 2-12

| Weekly Schedule | M | T | W | TH | F |
|-----------------|---|---|---|----|-------------|
| | A | A | B | B | Virtual Day |

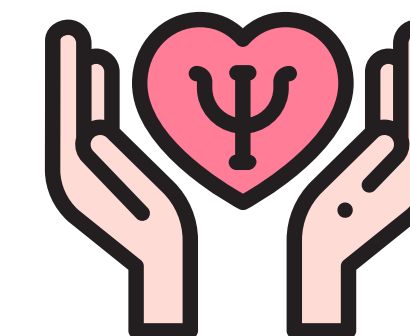
Half of grades 2-12 students (group A) learn in person on Monday and Tuesday. The other half of grades 2-12 students (group B) learn in person on Wednesday & Thursday. Friday is a virtual learning day for students in grades 2-12.



- Classroom furniture and layouts will maximize social distance and efficient cleaning.
- Frequent hand washing is a classroom routine.
- The hybrid model maximizes social distance.
- Virtual learning includes times for synchronous, real-time video conferencing with teachers.

During this school year, district leaders will monitor COVID-19 data and may adjust the learning model according to the state's Safe Learning Plan.

SUPPORTING MENTAL HEALTH



Thanks to a grant from the Foundation for Eden Prairie Schools, our students, staff and families had access to mental health support all summer. Every Friday over the summer, counselors from the Washburn Center for Children provided free phone counseling to students, parents/guardians and district employees. Washburn Center is a local provider of comprehensive mental health therapy.

The Foundation for Eden Prairie Schools gives back directly to students, faculty and employees in your local public schools. **This fall, free school supplies were provided across EP Schools to students who needed them courtesy of FEPS.** Please learn more about FEPS at foundationforepschools.org and consider a charitable contribution. FEPS is a fully independent 501(c)3 with a mission to enhance the legacy of excellence in Eden Prairie Schools.