

Wiseburn Unified School District

October 15, 2020

Phased Return to In-person Assessment & Specialized Services

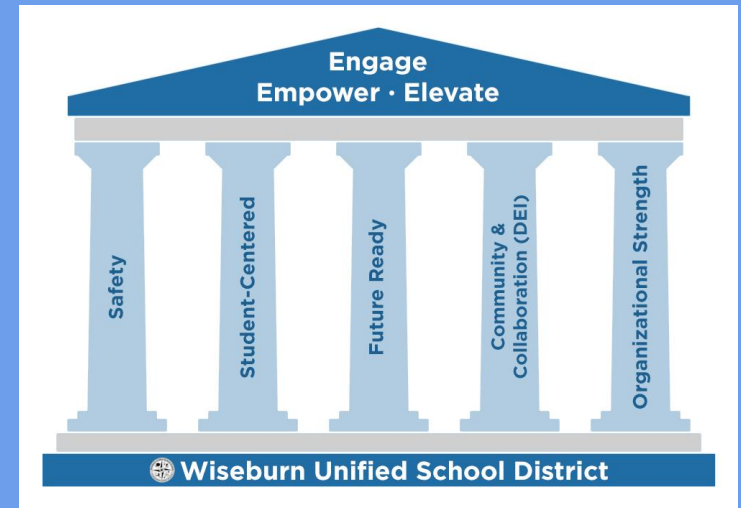
*** Los Angeles County Schools are not allowed to open for in-person learning for general education as per a directive for the Los Angeles County Department of Public Health.**

Purpose

Provide an overview and recommendation for the phased return of students with special learning needs (Special Education/English Language Learners) to WUSD campuses.

Presentation Objectives

1. Current Circumstances/Updates
2. Wiseburn Unified Safety Protocols
3. Phased Approach and Timeline
4. Communications
5. Question and Answer Session



Current COVID Data - LA County

Los Angeles County

Close

Widespread*

Many non-essential indoor business operations are closed

9.0 New COVID-19 cases per day per 100K

7.6 Adjusted case rate for tier assignment

3.7% Positivity rate

6.0% Health equity metric (HPI quartile positivity rate)

3 weeks prior
9/12

2 weeks prior
9/19

1 week prior
9/26

Current
10/03

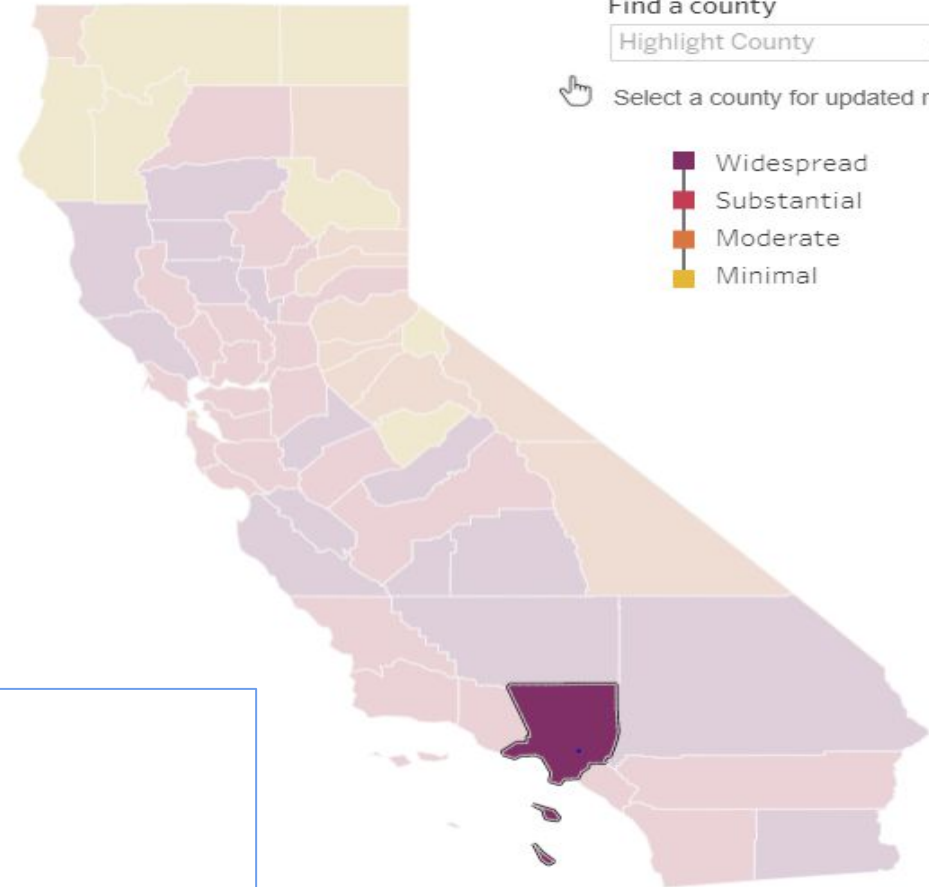
Widespread Widespread Widespread Widespread

*See California Blueprint Data Chart for tier determination

*Minimum requirements to move tiers

- Positivity Rate - Below 8%
- Cases/100,000 residents - Below 7 new cases/100,000 residents

Current data updated as of 10/13/2020



What does this mean for Wiseburn?

Schools *may* offer in-school services

- In-person assessments (IEP) - Assessments to be conducted in-person as part of the student's IEP evaluation.
- English Language Development (ELD) student initial assessments - All initial ELPAC assessments will be completed online by 10/23.
- Specialized services (Preschool and TK-8) - Designated support services for students with special needs (i.e. Special Education) that are having difficulty accessing virtual services (occupational therapy, speech and language, and behavioral/counseling). Learning support services for students having difficulty accessing and progressing with distance learning instruction (ELL and Special Education).

Los Angeles Department of Health *Guidelines*

- No more than 12 students/cohort with 2 supervising adults
- No more than 10% of total school enrollment
- Strict cohort design
- Use of outdoor space for at least 50% of the time

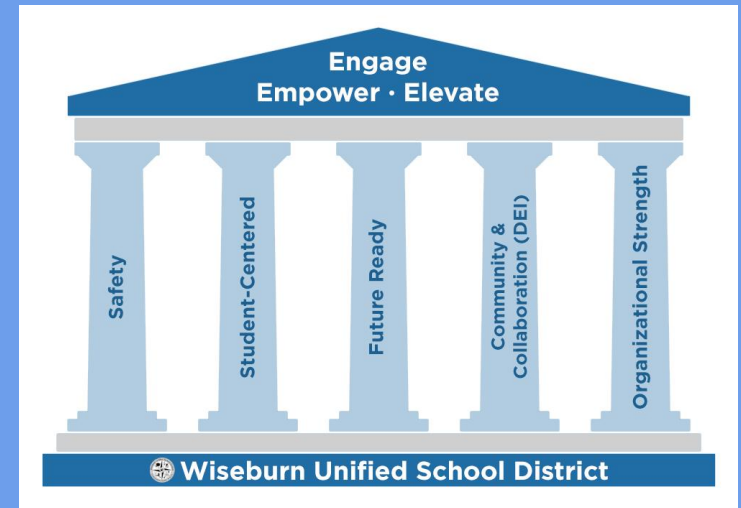


Purpose

Provide an overview and recommendation for the phased return of students with special learning needs (Special Education/English Language Learners) to WUSD campuses.

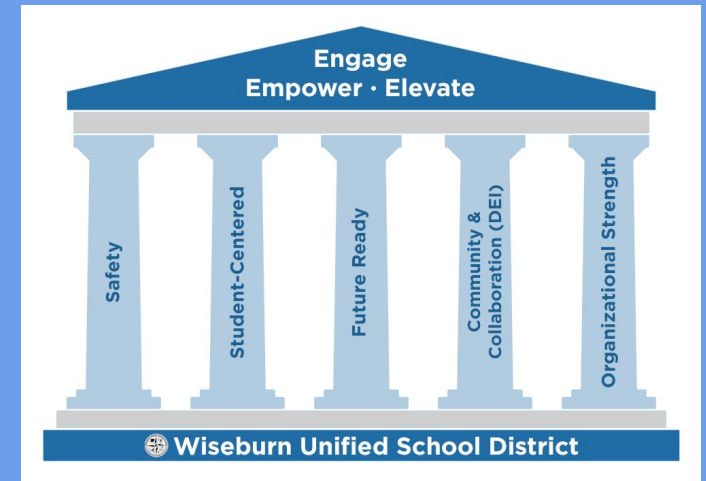
Presentation Objectives

1. Current Circumstances/Updates
2. Wiseburn Unified Safety Protocols
3. Phased Approach and Timeline
4. Communications
5. Question and Answer Session



Safety Assurance

We assure that all stakeholders will have access to a safe learning environment both physically and emotionally and are assured that well-trained adults and children on campus will take reasonable actions to maintain the safety of all students.



Safety Protocols Taken in WUSD

Enhanced Cleaning Protocols and Monitoring

- Cleaning Checklists
*Classrooms, *Office Space, *Restrooms

On-site Symptom Monitoring

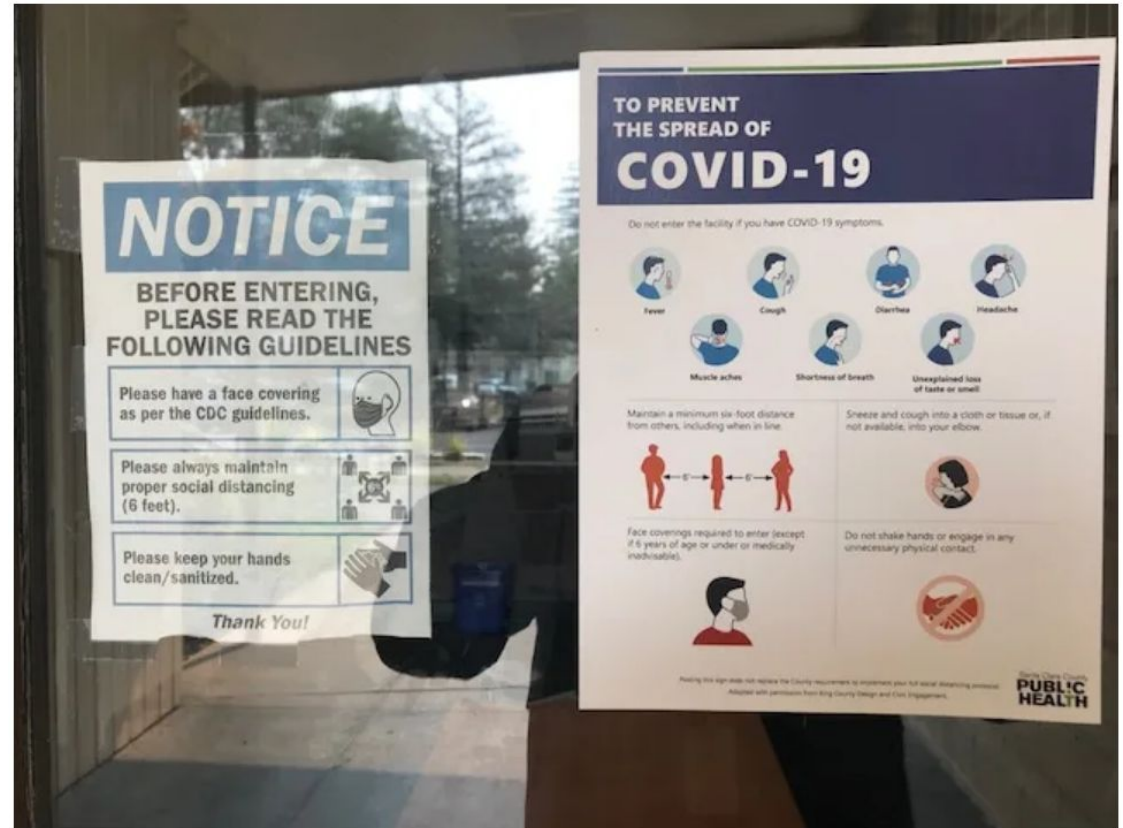
- Daily questionnaire
- Temperature check
- Contact tracing plan

Additional Measures

- Social distancing signage
- Desktop Plexiglass shields
- Hand Sanitizer Stations

Provide Protective Equipment

- Masks/Logoed Masks
- Face Shields
- Gloves
- Sanitizing Materials

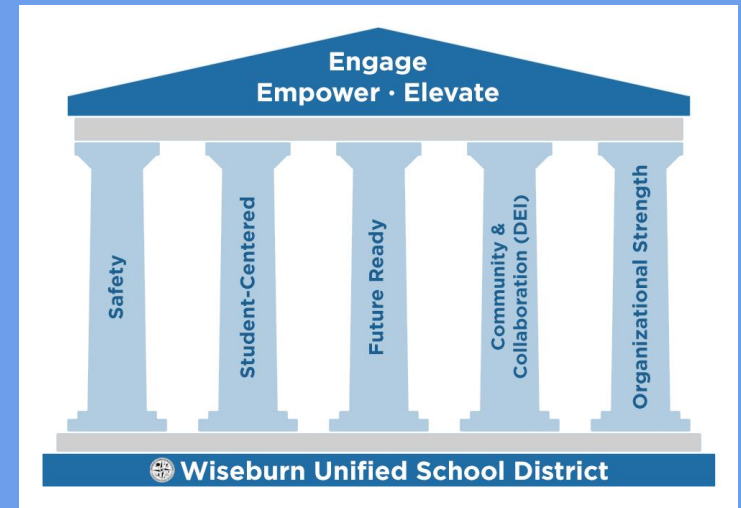


Purpose

Provide an overview and recommendation for the phased return of students with special learning needs (Special Education/English Language Learners) to WUSD campuses.

Presentation Objectives

1. Current Circumstances/Updates
2. Wiseburn Unified Safety Protocols
3. Phased Approach and Timeline
4. Communications
5. Question and Answer Session



WUSD Phased Return to In-Person Assessment & Specialized Services

November 2, 2020

Phase 1 - In-Person Special Education IEP Assessments (All Grade Levels - Preschool - 8th)

- ❑ Complete special education assessments
- ❑ Prioritize IEPs - initial, triennial, and transition

November 16, 2020

Phase 2 - Special Education Preschool Cohort

- ❑ Provide specialized services for special education preschool students (ages 3 - 5)
- ❑ Services scheduled with families

November 30, 2020

Phase 3 - Specialized Services TK-5 Cohort

- ❑ Provide specialized services for special education and ELL students grades TK-5
- ❑ Services scheduled with families

December 14, 2020

Phase 4 - Specialized Services 6-8 Cohort

- ❑ Provide specialized services for special education and ELL students grades 6-8
- ❑ Services scheduled with families

Note - These dates require ratification of a Memorandum of Understanding (MOU) with the Wiseburn Faculty Association (WFA).



Impact of Phased Re-opening of Sites

Facilities

- All 5 School Sites to be utilized (138th, Anza, Cabrillo, Dana, SLC) - each site to identify at least 5 spaces for assessment
- Outdoor Spaces
- Scattered Indoor areas - larger venues when possible
- Enhanced Cleaning and Disinfecting as needed

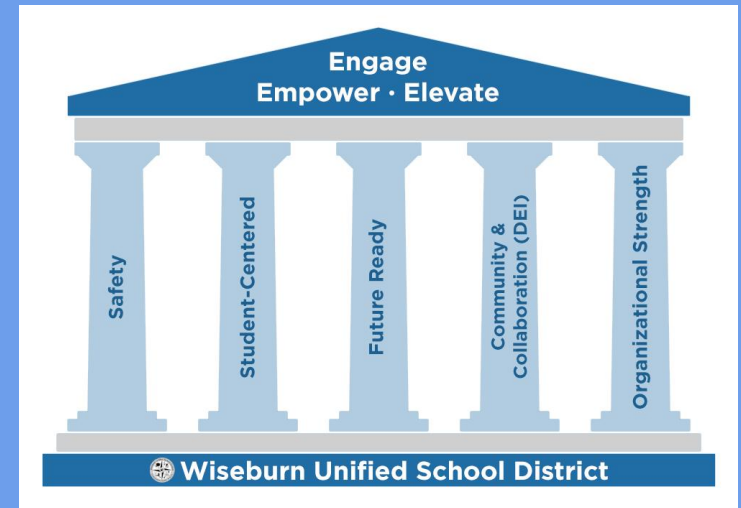
Site administrators, in consult with staff, will determine logistics of in person assessment and small cohorts (i.e. room assignments, outdoor spaces, schedule, cleaning cadence, etc.

Purpose

Provide an overview and recommendation for the phased return of students with special learning needs (Special Education/English Language Learners) to WUSD campuses.

Presentation Objectives

1. Current Circumstances/Updates
2. Wiseburn Unified Safety Protocols
3. Phased Approach and Timeline
4. Communications
5. Question and Answer Session



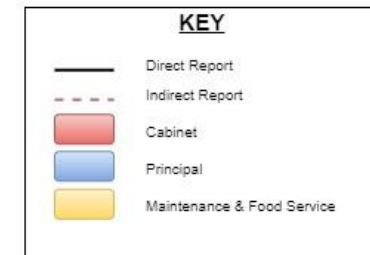
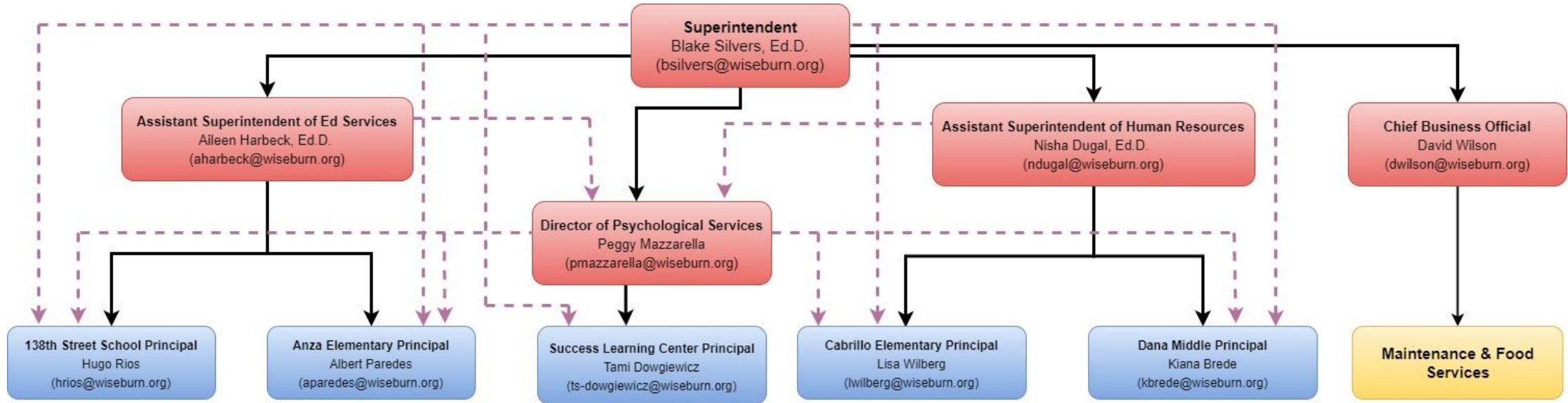
Communication & Timing

Phase 1	Special Services Assessments <u>Superintendent</u> to communicate to staff and school community regarding phased return. <u>Director of Special Education with site administrators</u> to communicate processes and schedules to families.	<u>District Communication/Key Dates</u> <ul style="list-style-type: none">● Initial Message - October 23, 2020● Director of Special Education/School Site Staff - Week of October 26, 2020 (parent/caregiver individual notification)● In-Person Assessments - Begin November 2, 2020
Phase 2	Special Education Preschool <u>Director of Special Education</u> to communicate processes and locations to preschool families and staff	<u>District Communication/Key Dates</u> <ul style="list-style-type: none">● Director's Message (Phase 2) - Week of November 9, 2020● Preschool Cohort Begins - November 16, 2020
Phase 3 & 4	Specialized Services Grades TK-2 & 3-8 <u>Site Administrators with special education and ELD staff</u> to communicate processes and schedules to families	<u>District Communication/Key Dates</u> <ul style="list-style-type: none">● Site-based communications (Principals) - beginning Week of November 23, 2020 (ongoing through Phase 3 and 4)

Flow of Communication



Organizational Flow



QUESTIONS