

**INDEPENDENT SCHOOL
DISTRICT #624**



**WORK SESSION
PACKET**

October 26, 2020

MISSION STATEMENT

The mission of the White Bear Lake Area School District, the community at the forefront of educational excellence, honoring our legacy and courageously building the future, is to ensure each student realizes their unique talents and abilities, and makes meaningful contributions with local and global impact through a vital system distinguished by:

- *Students who design and create their own future*
- *A culture that respects diverse people and ideas*
- *Safe, nurturing and inspiring environments*
- *Exceptional staff and families committed to student success*
- *Abundant and engaged community partners*

To: Members of the School Board

From: Dr. Wayne A. Kazmierczak
Superintendent of Schools

Date: October 19, 2020

A work session of the White Bear Lake Area School Board will be held on **Monday, October 26, 2020**, at 5:30 p.m. in the auditorium at the District Center, 4855 Bloom Avenue, White Bear Lake, MN.

Please note: This meeting is open to the public with room capacity limits while staying six feet apart and wearing a mask.

WORK-STUDY AGENDA

A. PROCEDURAL ITEMS

1. Call to Order
2. Roll Call

B. OPERATIONAL ITEMS

- | | |
|--|-----------|
| 1. Action on Lincoln Elementary Bids | 5:35 p.m. |
| 2. Action on Expanded Meal Access for Minnesota
Children and Adults Grant | 5:50 p.m. |

C. DISCUSSION ITEMS

- | | |
|---|-----------|
| 1. Facilities Update – New Elementary and White Bear Lake Area
High School | 6:00 p.m. |
| 2. New Course Proposals for 2021-22 | 7:00 p.m. |
| 3. Learning Model Planning Update | 7:25 p.m. |

D. ADJOURNMENT

Times listed for each discussion item are estimated start times.

AGENDA ITEM: **Action on Lincoln Elementary Bids**

MEETING DATE: **October 26, 2020**

SUGGESTED DISPOSITION: **Operational Item**

CONTACT PERSON(S): **Tim Wald, Assistant Superintendent for Finance and Operations**
Dan Roeser, Director of Building Operations

BACKGROUND:

The Lincoln Elementary phase one project includes a new gymnasium, conference room, cooler and Extended Day office addition, additional parking for addition and parent drop off zone, Media Center renovation, renovation of stage and small gym to serve as mixed use and specialist classrooms.

The schematic design process occurred in April and May, 2020, user groups met from May to September, 2020 and construction will start this fall with the work being completed by the opening of school in September of 2021.

The District's construction management firm, Kraus-Anderson, prepared the Request for Proposals (RFP) and conducted the bid opening on Oct. 13, 2020. A summary is attached.

RECOMMENDED ACTION:

Approve the recommendation to award construction contracts for the addition and remodel at Lincoln Elementary in the amount of \$5,958,282.75 as presented.



October 19, 2020

Mr. Tim Wald
White Bear Lake Area Schools, ISD 624
4855 Bloom Ave
White Bear Lake, MN 55110

RE: **Lincoln Elementary Addition & Renovation**

Dear Mr. Tim Wald:

This letter is concerning the contract awards for the above referenced project that was bid on October 13, 2020.

Kraus-Anderson has verified bidders and we submit the following lowest responsible bidders and their total bid amount:

<i>Work Scope</i>		<i>Contractor, City, State</i>		<i>Bid Amount</i>
WS 02-A	Demolition	EnviroBate, Inc. Minneapolis, MN	Base Bid:	\$107,975.00
			Alt 01:	\$0.00
			Total Contract Amount:	\$107,975.00
WS 03-A	Concrete	Axel H. Ohman, Inc. Minneapolis, MN	Base Bid:	\$387,000.00
			Alt 01:	\$0.00
			Total Contract Amount:	\$387,000.00
WS 03-C	Architectural Pre-Cast	Taracon Precast, LLC Hawley, MN	Base Bid:	\$358,007.00
			Alt 01:	\$0.00
			Total Contract Amount:	\$358,007.00
WS 04-A	Masonry	B&D Associates, LLC. St. Paul, MN	Base Bid:	\$214,550.00
			Alt 01:	\$0.00
			Total Contract Amount:	\$214,550.00
WS 05-A	Structural Steel Supply – Material Only	Camelot Metals, Inc. Blaine, MN	Base Bid:	\$205,558.00
			Alt 01:	\$0.00
			Total Contract Amount:	\$205,558.00
WS 05-B	Structural Steel Erection	Patriot Erectors, Inc. Loretto, MN	Base Bid:	\$89,900.00
			Alt 01:	\$0.00
			Total Contract Amount:	\$89,900.00

WS 06-A	Carpentry	Schreiber Mullaney Construction Company, Inc. St. Paul, MN	Base Bid: Alt 01: Total Contract Amount:	\$353,890.00 \$0.00 \$353,890.00
WS 07-H	Gravel Surface Membrane Roofing	Central Roofing Company, Minneapolis, MN	Base Bid: Alt 01: Total Contract Amount:	\$308,360.00 \$0.00 \$308,360.00
WS 07-K	Sealants	Right-Way Caulking Fridley, MN	Base Bid: Alt 01: Total Contract Amount:	\$15,970.00 \$0.00 \$15,970.00
WS 08-A	Doors, Frames, Hardware – Material Only	Twin City Hardware Company Oakdale, MN	Base Bid: Alt 01: Total Contract Amount:	\$123,675.00 \$0.00 \$123,675.00
WS 08-F	Entrances, Storefront, & Curtainwall	S&J Construction, Inc. dba S&J Glass, Inc. Coon Rapids, MN	Base Bid: Alt 01: Total Contract Amount:	\$83,320.00 \$0.00 \$83,320.00
WS 09-A	Drywall	RTL Construction Shakopee, MN	Base Bid: Alt 01: Total Contract Amount:	\$185,933.00 \$0.00 \$185,933.00
WS 09-B	Tile	WTG Terrazzo & Tile, Inc. Burnsville, MN	Base Bid: Alt 01: Total Contract Amount:	\$121,130.00 \$0.00 \$121,130.00
WS 09-C	Acoustical Ceilings & Treatment	Kirk Acoustics, Inc. St. Paul, MN	Base Bid: Alt 01: Total Contract Amount:	\$91,100.00 \$0.00 \$91,100.00
WS 09-D	Resilient & Carpet Flooring	Floors by Beckers, LLC New Brighton, MN	Base Bid: Alt 01: Total Contract Amount:	\$40,673.00 \$0.00 \$40,673.00
WS 09-F	Wood Athletic Flooring	H2I Group, Inc. Minneapolis, MN	Base Bid: Alt 01: Total Contract Amount:	\$73,701.00 \$0.00 \$73,701.00

WS 09-G	Terrazzo	Gibbons Terrazzo, Inc. Menomonie, WI	Base Bid: Alt 01: Total Contract Amount:	\$7,350.00 \$0.00 \$7,350.00
WS 09-K	Painting	Steinbrecher Painting Company Princeton, MN	Base Bid: Alt 01: Total Contract Amount:	\$37,000.00 \$0.00 \$37,000.00
WS 10-E	Operable Electric Wall System	Capital City Glass, Inc. Blaine, MN	Base Bid: Alt 01: Total Contract Amount:	\$39,700.00 \$0.00 \$39,700.00
WS 11-F	Food Service	Hockenbergs Equipment & Supply Co., Inc. dba TriMark Hockenbergs Rogers, MN	Base Bid: Alt 01: Total Contract Amount:	\$63,650.00 \$0.00 \$63,650.00
WS 12-C	Plastic Laminate Casework	TMI Systems Corporation Dickinson, ND	Base Bid: Alt 01: Total Contract Amount:	\$57,186.00 \$0.00 \$57,186.00
WS 21-A	Fire Suppression	LifeSaver Fire Protection Company Golden Valley, MN	Base Bid: Alt 01: Total Contract Amount:	\$50,500.00 \$0.00 \$50,500.00
WS 22-A	Plumbing	Cities 1 Plumbing & Heating St. Paul, MN	Base Bid: Alt 01: Total Contract Amount:	\$308,000.00 \$0.00 \$308,000.00
WS 23-A	HVAC	Weidner Heating & Plumbing Co. St. Cloud, MN	Base Bid: Alt 01: Total Contract Amount:	\$1,294,000.00 \$0.00 \$1,294,000.00
WS 26-A	Electrical	NEO Electrical Solutions, LLC Hudson, WI	Base Bid: Alt 01: Total Contract Amount:	\$508,000.00 \$82,500.00 \$590,500.00
WS 31-A	Site Clearing, Utilities, & Earthwork	JACON, LLC Vadnais Heights, MN	Base Bid: Alt 01: Total Contract Amount:	\$435,988.00 \$0.00 \$435,988.00



WS 32-A	Plant Mix Bituminous Pavement	Bituminous Roadways, Inc. Mendota Heights, MN	Base Bid: Alt 01: Total Contract Amount:	\$135,950.00 \$0.00 \$135,950.00
WS 32-B	Concrete Paving	Curb Masters, Inc. St. Paul, MN	Base Bid: Alt 01: Total Contract Amount:	\$96,141.75 \$0.00 \$96,141.75
WS 32-F	Landscaping	Peterson Companies, Inc. Chisago City, MN	Base Bid: Alt 01: Total Contract Amount:	\$81,575.00 \$0.00 \$81,575.00
			Contract Total:	\$5,958,282.75

We have enclosed the Bid Tabulation sheets that reflect the bids received.

If you have any questions regarding this information, please do not hesitate to contact me at (612) 618-2539.

Very truly yours,
KRAUS-ANDERSON® CONSTRUCTION COMPANY



Andy Thompson,
Project Manager



ARCHITECT: Wold Architects & Engineers

October 13, 2020 at 2:00 PM

WORK SCOPE 02-A: Demolition

[illegible]



ARCHITECT: Wold Architects & Engineers

October 13, 2020 at 2:00 PM

[illegible]



ARCHITECT: Wold Architects & Engineers

[illegible]



ARCHITECT: Wold Architects & Engineers

October 13, 2020 at 2:00 PM

[illegible]



ARCHITECT: Wold Architects & Engineers

October 13, 2020 at 2:00 PM

[illegible]



ARCHITECT: Wold Architects & Engineers

October 13, 2020 at 2:00 PM

WORK SCOPE 04-A: Masonry

[illegible]



ARCHITECT: Wold Architects & Engineers

October 13, 2020 at 2:00 PM

WORK SCOPE 04-A: Masonry

[illegible]



ARCHITECT: Wold Architects & Engineers

October 13, 2020 at 2:00 PM

[illegible]



ARCHITECT: Wold Architects & Engineers

BID TABULATIONS

October 13, 2020 at 2:00 PM

[illegible]



ARCHITECT: Wold Architects & Engineers

October 13, 2020 at 2:00 PM

WORK SCOPE 06-A: Carpentry

[illegible]



ARCHITECT: Wold Architects & Engineers

October 13, 2020 at 2:00 PM

WORK SCOPE 06-A: Carpentry

[illegible]



ARCHITECT: Wold Architects & Engineers

BID TABULATIONS

October 13, 2020 at 2:00 PM

[illegible]



ARCHITECT: Wold Architects & Engineers

BID TABULATIONS

October 13, 2020 at 2:00 PM

[illegible]



ARCHITECT: Wold Architects & Engineers

October 13, 2020 at 2:00 PM

[illegible]



ARCHITECT: Wold Architects & Engineers

[illegible]



ARCHITECT: Wold Architects & Engineers

BID TABULATIONS

October 13, 2020 at 2:00 PM

WORK SCOPE 08-F: Entrances, Storefront, & Curtainwall

[illegible]



ARCHITECT: Wold Architects & Engineers

BID TABULATIONS

October 13, 2020 at 2:00 PM

WORK SCOPE 08-F: Entrances, Storefront, & Curtainwall

[illegible]



ARCHITECT: Wold Architects & Engineers

October 13, 2020 at 2:00 PM

WORK SCOPE 09-A: Drywall

[illegible]



ARCHITECT: Wold Architects & Engineers

October 13, 2020 at 2:00 PM

[illegible]



ARCHITECT: Wold Architects & Engineers

BID TABULATIONS

October 13, 2020 at 2:00 PM

[illegible]



ARCHITECT: Wold Architects & Engineers

BID TABULATIONS

October 13, 2020 at 2:00 PM

[illegible]



ARCHITECT: Wold Architects & Engineers

October 13, 2020 at 2:00 PM

[illegible]



ARCHITECT: Wold Architects & Engineers

October 13, 2020 at 2:00 PM

WORK SCOPE 09-D: Resilient & Carpet Flooring

[illegible]



ARCHITECT: Wold Architects & Engineers

BID TABULATIONS

October 13, 2020 at 2:00 PM

[illegible]



ARCHITECT: Wold Architects & Engineers

October 13, 2020 at 2:00 PM

WORK SCOPE 09-K: Painting

[illegible]



ARCHITECT: Wold Architects & Engineers

October 13, 2020 at 2:00 PM

[illegible]



ARCHITECT: Wold Architects & Engineers

October 13, 2020 at 2:00 PM

[illegible]



ARCHITECT: Wold Architects & Engineers

October 13, 2020 at 2:00 PM

[illegible]



ARCHITECT: Wold Architects & Engineers

BID TABULATIONS

October 13, 2020 at 2:00 PM

[illegible]



ARCHITECT: Wold Architects & Engineers

October 13, 2020 at 2:00 PM

[illegible]



ARCHITECT: Wold Architects & Engineers

October 13, 2020 at 2:00 PM

[illegible]



ARCHITECT: Wold Architects & Engineers

October 13, 2020 at 2:00 PM

WORK SCOPE 22-A: Plumbing

[illegible]



ARCHITECT: Wold Architects & Engineers

October 13, 2020 at 2:00 PM

[illegible]



ARCHITECT: Wold Architects & Engineers

October 13, 2020 at 2:00 PM

[illegible]



ARCHITECT: Wold Architects & Engineers

[illegible]



ARCHITECT: Wold Architects & Engineers

October 13, 2020 at 2:00 PM

[illegible]



ARCHITECT: Wold Architects & Engineers

October 13, 2020 at 2:00 PM

[illegible]



ARCHITECT: Wold Architects & Engineers

BID TABULATIONS

October 13, 2020 at 2:00 PM

[illegible]



ARCHITECT: Wold Architects & Engineers

BID TABULATIONS

October 13, 2020 at 2:00 PM

[illegible]



ARCHITECT: Wold Architects & Engineers

BID TABULATIONS

October 13, 2020 at 2:00 PM

[illegible]



ARCHITECT: Wold Architects & Engineers

October 13, 2020 at 2:00 PM

[illegible]



ARCHITECT: Wold Architects & Engineers

October 13, 2020 at 2:00 PM

[illegible]



ARCHITECT: Wold Architects & Engineers

October 13, 2020 at 2:00 PM

[illegible]

AGENDA ITEM: **Action on Expanded Meal Access for Minnesota
Children and Adults Grant**

MEETING DATE: **October 26, 2020**

SUGGESTED DISPOSITION: **Operational Item**

CONTACT PERSON(S): **Tim Wald, Assistant Superintendent for Finance and
Operations**
Bridget Lehn, Director of Nutrition Services

BACKGROUND:

Nutrition Services applied for and received the Expanded Meal Access for Minnesota Children and Adults Grant from the Minnesota Department of Education totaling \$104,000. The grant will be used to purchase a new delivery truck to provide prepared meals at various locations for Minnesota children who are experiencing food insecurity as a result of COVID-19.

RECOMMENDED ACTION: *Move to approve acceptance of the grant for a total amount of \$104,000 to fund the delivery truck.*

AGENDA ITEM: **Facilities Update – New Elementary and White Bear Lake Area High School**

MEETING DATE: **October 26, 2020**

SUGGESTED DISPOSITION: **Discussion Items**

CONTACT PERSON(S): **Tim Wald, Assistant Superintendent for Finance and Operations; and Dan Roeser, Director of Building Operations**

BACKGROUND:

During the past year, staff and administration have been working on the design for the addition and renovation of the current North Campus building to house grades 9-12 and the new elementary school in Hugo. Paul Aplikowski and Sal Bagley from Wold Architects and Engineers will provide an update on the design progress.



WHITE BEAR LAKE AREA SCHOOLS



REFERENDUM PROJECTS UPDATE

School Board Meeting

October 26, 2020



REFERENDUM PROJECTS UPDATE PRESENTATION AGENDA

Referendum Projects Completed:

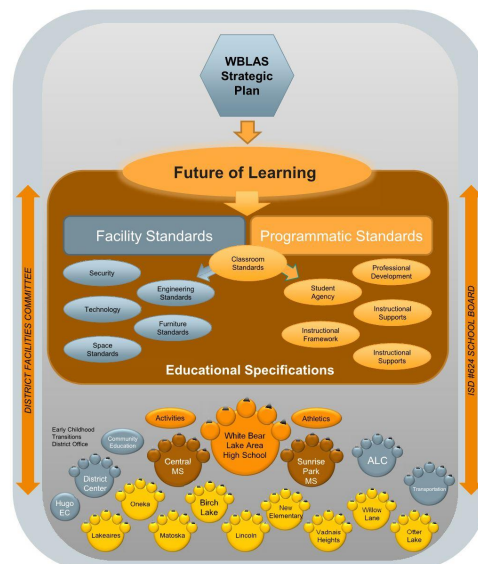
- ALC Security Renovation

Referendum Projects Bid / in Construction:

- Lincoln Elementary School
- Matoska Elementary School
- Vadnais Heights Elementary School
- Willow Lane Elementary School
- New Transportation / Maintenance Facility
- South Campus Gym Addition

Referendum Projects in Design:

- New Elementary School
- White Bear Lake Area High School
- South Campus Phase II Addition
- Phase I - New Classroom Furniture





White Bear Lake
Area Schools



WHITE BEAR LAKE AREA HIGH SCHOOL



White Bear Lake
Area Schools

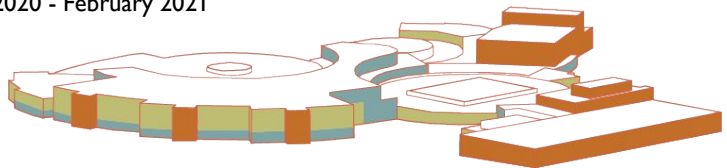
HIGH SCHOOL PROJECT SCOPE & SCHEDULE

Project Scope:

- Additions and renovations to create a comprehensive 9-12 high school
- New furniture
- Upgrades and expansion to kitchen and cafeteria
- 375,000 square foot addition
- \$179M total project cost including building, and on and off site improvements
- \$25M LTfM

Schedule:

- Schematic Design (Core Planning Group): late January 2020 - May 2020
- Design Development (User Groups): June 2020 - February 2021
- Bidding / Construction Starts: Spring 2021
- Opens in phases over the next 4 years





HIGH SCHOOL PROJECT COMMITMENTS

- The design will be **future-ready and forward thinking**, and adapt to the changing needs of the community over time.
- The design will honor and embrace all cultures. It will be rooted in the **history of the area while reflecting the present culture** and WBLAS community sensibilities.
- The building will be an **inclusive place** where learners can explore their evolving interests, and develop a sense of community. Learning studios should be organized to create a **“small-school feel”** within the high school.
- The building and programming will **actively support student agency** while providing guidance and support in their educational journey.
- **Special Education spaces should be distributed** to provide inclusion and opportunities for learners.

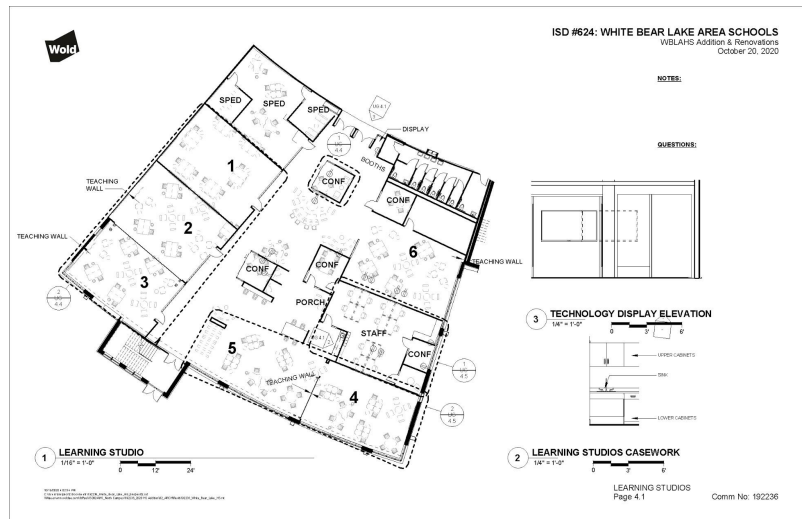


HIGH SCHOOL DESIGN CRITERIA

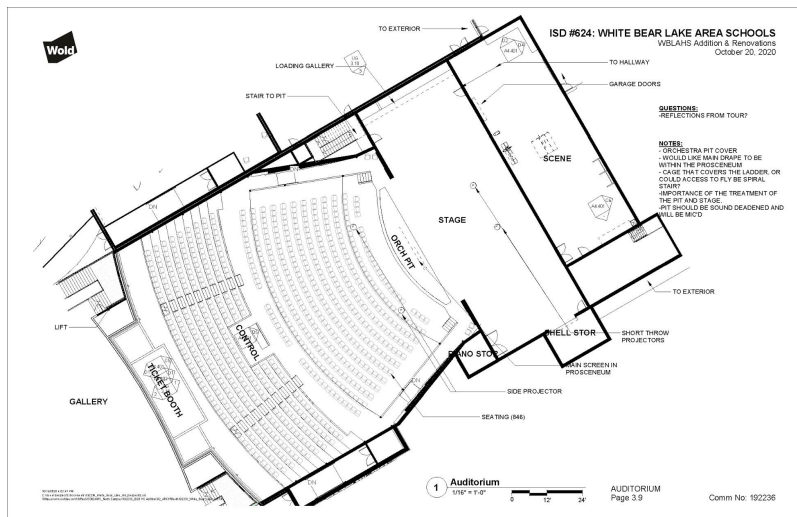
- The building provides **spaces for meaningful collaboration** for staff, learners and the community.
- **The Union serves as the central connecting space** within the building, connecting the main entry, learning studios, fine arts, and athletics areas.
- The Learning Commons should be a space for innovation and technology and a resource for all learners and staff.
- Spaces within the Learning Commons should **allow for collaboration between learners and their peers** (in both small and large groups), as well as with staff and community partners.
- Learning Commons should have a **direct physical and visual connection to the multi-story Student Union** and be a **central element (hub) within the school**.
- The building will have dedicated spaces for staff collaboration, rest, and support. **Staff offices or “home bases” will be distributed** among the learning spaces in proximity to the areas in which they are teaching at the time. Staff offices should be secure and private.
- **Specialty learning spaces** (pathways, science, FACS) should be **easily accessible from all learning studios**.
- Organization of learning studios should support **collaboration around both content and learners**.

User Group Process:

- Met with 46 User Groups
- Round 1 - May 2020
- Round 2 - June 2020
- Round 3 - (Ongoing)
October 2020



Learning Studios

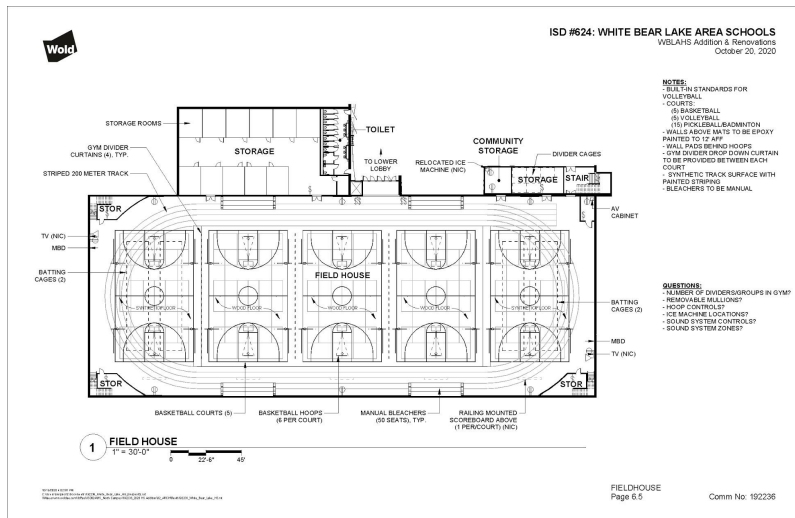


Auditorium



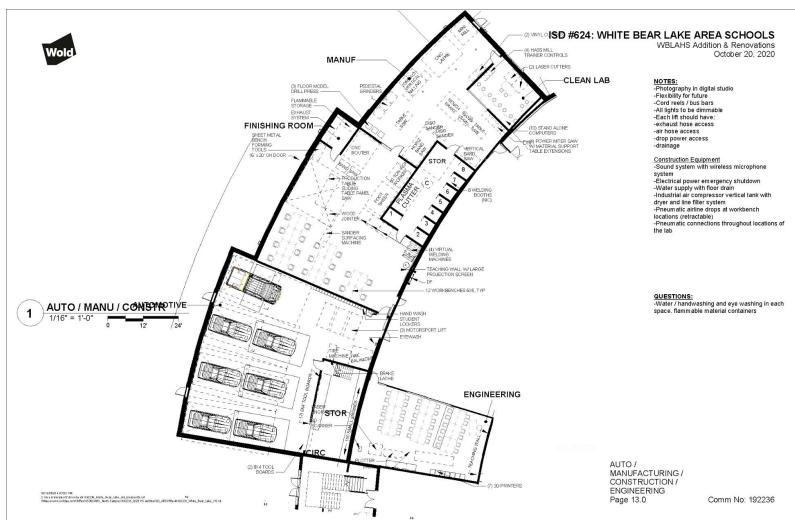
White Bear Lake
Area Schools

HIGH SCHOOL USER GROUPS



White Bear Lake
Area Schools

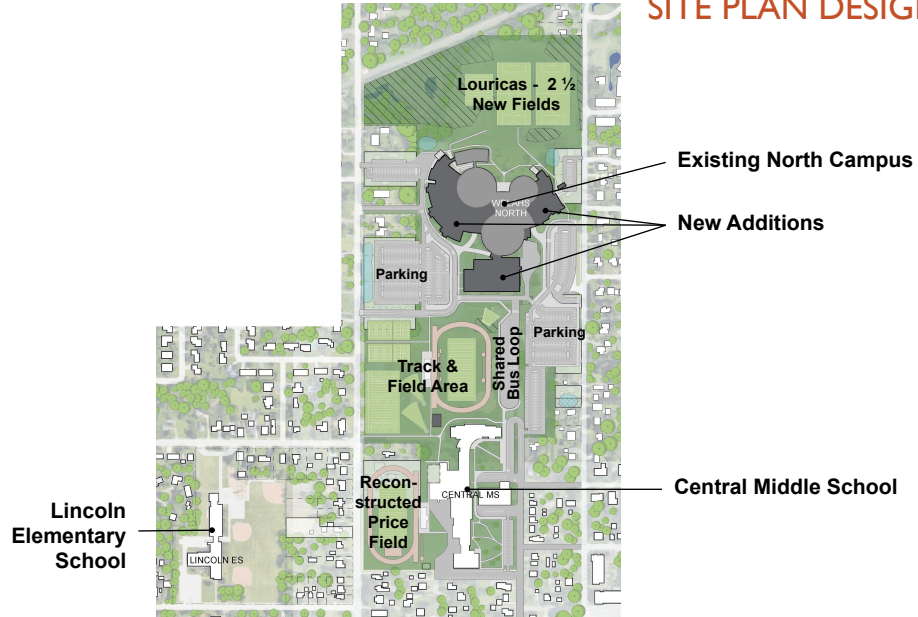
HIGH SCHOOL USER GROUPS





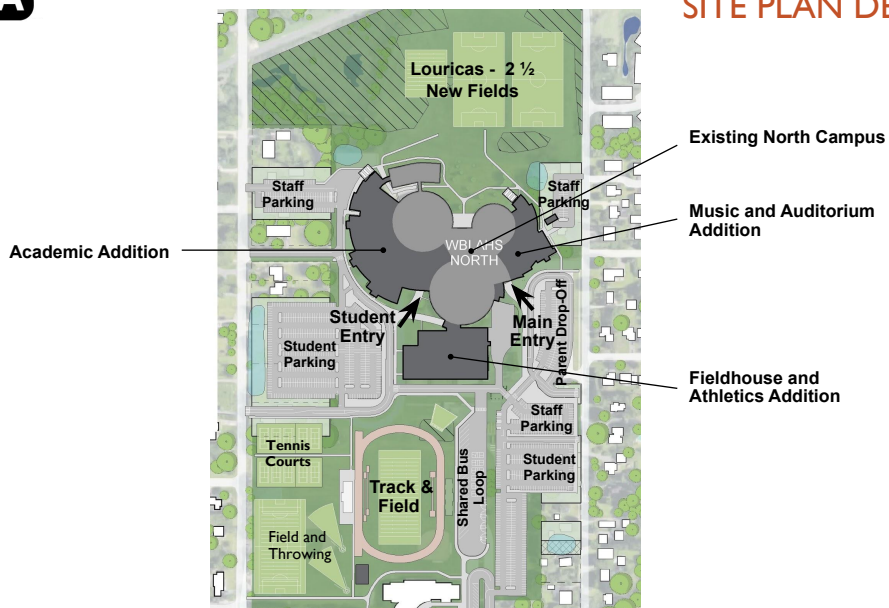
White Bear Lake
Area Schools

HIGH SCHOOL SITE PLAN DESIGN



White Bear Lake
Area Schools

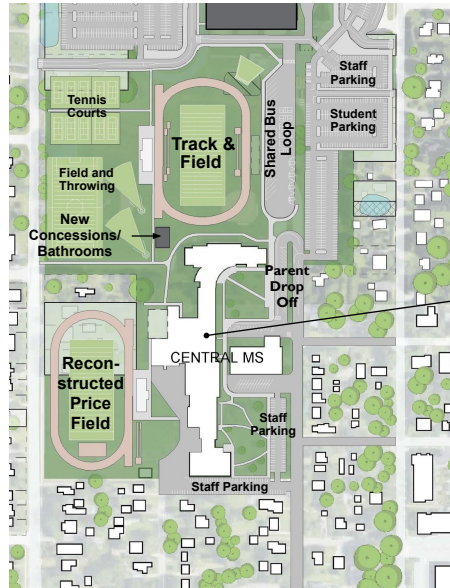
HIGH SCHOOL SITE PLAN DESIGN





White Bear Lake
Area Schools

HIGH SCHOOL SITE PLAN DESIGN



Central Middle School



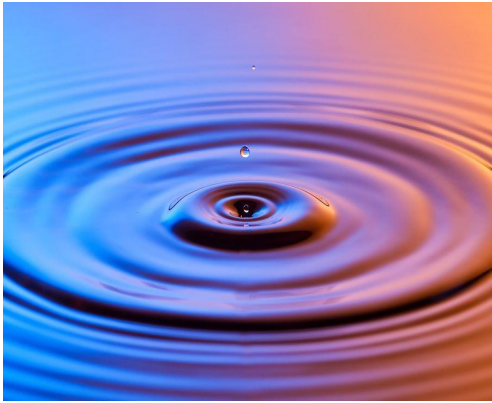
White Bear Lake
Area Schools

HIGH SCHOOL DESIGN INSPIRATION

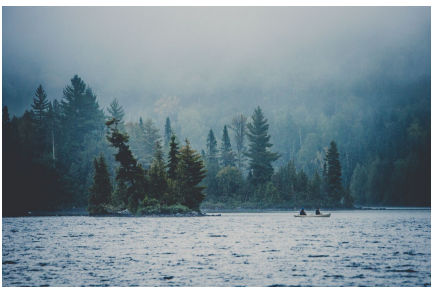


Lakes and Ponds in District

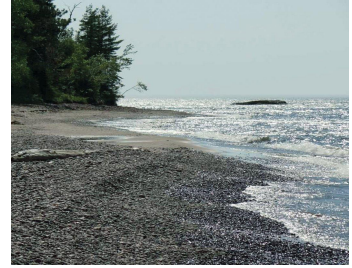
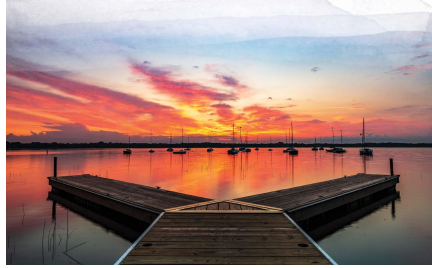
- Bald Eagle Lake
- Oneka Lake
- Vadnais Lake
- White Bear Lake
- Amelia Lake
- Birch Lake
- Black Lake
- Egg Lake
- Gem Lake
- Gilfillan Lake
- Goose Lake
- Oak Knoll Pond
- Otter Lake
- Peppertree Ponds
- Priebe Lake
- Rice Lake
- Tamarack Lake
- Twin Lake
- Waterbury Pond
- Willow Lake



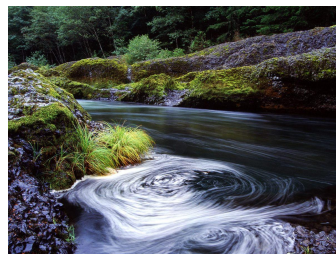
Lake: Open, expansive, layered views, free movement



Shoreline: intentional, welcoming, visible, active, gradual



Eddy: An area of lower energy caused by a flow of water around objects. connected and part of the larger flow, but provides an area of rest





White Bear Lake
Area Schools

HIGH SCHOOL DESIGN INSPIRATION



ISLANDS



COVE



OPEN WATER



BAY

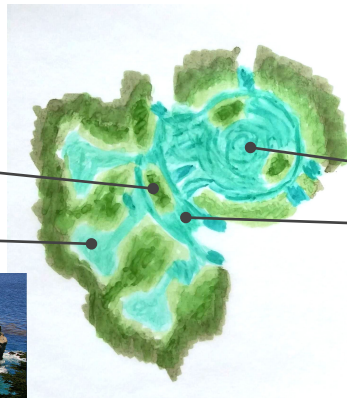


White Bear Lake
Area Schools

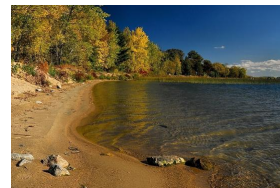
HIGH SCHOOL DESIGN INSPIRATION



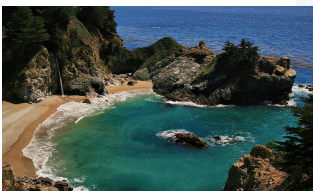
ISLANDS



COVE



BAY



OPEN WATER



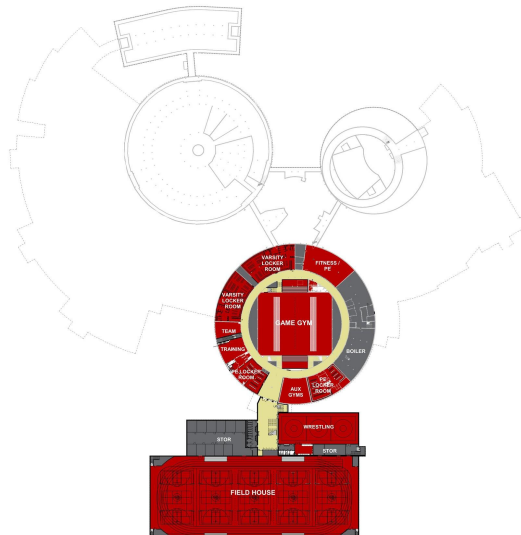
White Bear Lake
Area Schools

HIGH SCHOOL MAIN LEVEL FLOOR PLAN



White Bear Lake
Area Schools

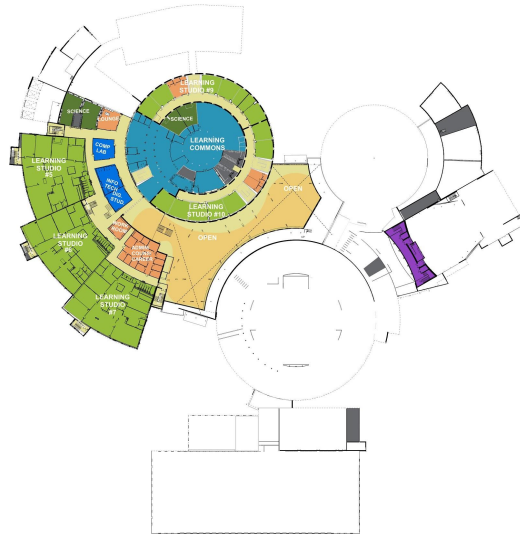
HIGH SCHOOL LOWER LEVEL FLOOR PLAN





White Bear Lake
Area Schools

HIGH SCHOOL SECOND LEVEL FLOOR PLAN



White Bear Lake
Area Schools

HIGH SCHOOL THIRD LEVEL FLOOR PLAN





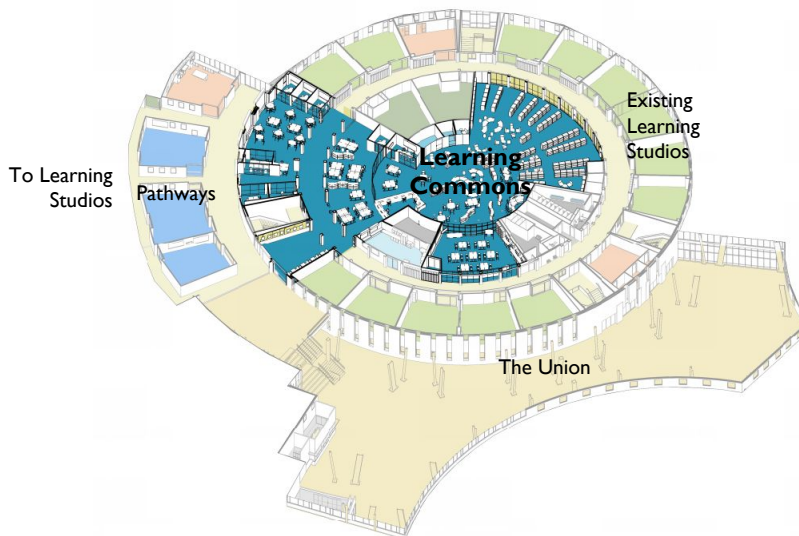
White Bear Lake
Area Schools

HIGH SCHOOL LEARNING STUDIO DIAGRAM



White Bear Lake
Area Schools

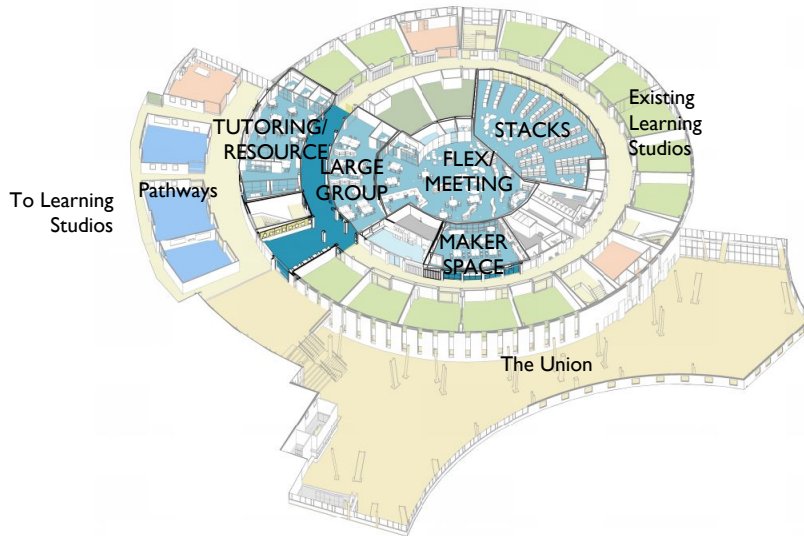
HIGH SCHOOL LEARNING COMMONS DIAGRAM





White Bear Lake
White Bear Lake
Area Schools

HIGH SCHOOL LEARNING COMMONS DIAGRAM



White Bear Lake
White Bear Lake
Area Schools

HIGH SCHOOL EXTERIOR VIEW





White Bear Lake
Area Schools

HIGH SCHOOL EXTERIOR VIEW



STUDENT ENTRY



White Bear Lake
Area Schools

HIGH SCHOOL EXTERIOR VIEW

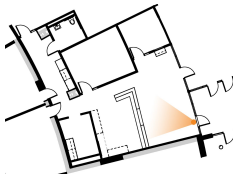


LEARNING STUDIOS



White Bear Lake
Area Schools

HIGH SCHOOL INTERIOR VIEW

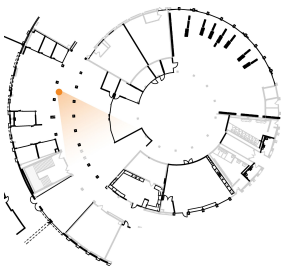


MAIN OFFICE



White Bear Lake
Area Schools

HIGH SCHOOL INTERIOR VIEW



LEARNING COMMONS



White Bear Lake
Area Schools

HIGH SCHOOL INTERIOR VIEW



LEARNING STUDIOS



White Bear Lake
Area Schools

HIGH SCHOOL INTERIOR VIEW



LEARNING STUDIO - RESOURCE SPACE



White Bear Lake
Area Schools

HIGH SCHOOL INTERIOR VIEW

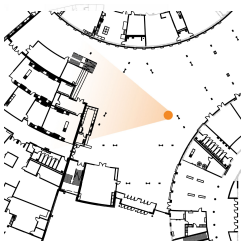


LEARNING STUDIO - FLEX CLASSROOMS



White Bear Lake
Area Schools

HIGH SCHOOL INTERIOR VIEW



THE UNION



White Bear Lake
Area Schools



NEW ELEMENTARY SCHOOL IN HUGO, MN



White Bear Lake
Area Schools

NEW ELEMENTARY SCHOOL PROJECT SCOPE & SCHEDULE

Project Scope:

- New elementary to create a comprehensive K-5 school in Hugo, MN
- New furniture
- 101,000 square foot building
- Approximately \$43 million total project cost including building and on and off site improvements

Schedule:

- Schematic Design (Core Planning Group): January 2020 - May 2020
- Design (User Groups): May 2020 - September 2020
- Construction Documents: September 2020 - November 2020
- Bid Opening: December 2020
- Bidding / Construction Starts: Spring 2021
- Open Fall 2022



NEW ELEMENTARY SCHOOL PROJECT COMMITMENTS

- The building and site will be welcoming, safe, and accessible for all users.
- The facility should support **collaboration, innovation**, and accommodate the needs of **active learning, interaction**, and **social development**.
- The design should prioritize **natural daylight** and **connections to nature** to enhance the learning environment.
- The building should be energy efficient.
- The look and feel of the building should represent the values and identity and be a source of pride of White Bear Lake Area Schools and Community.
- Spaces should be innovative, **engaging, and inspiring**, while **providing flexibility for multiple uses**.
- Students should feel well represented within the building.
- The building should be accessible for users and the community.
- The design should support and be adaptable for current and future technologies.
- The design should celebrate and **make learning visible** for all to see.
- The building should embrace the multi-generational community.

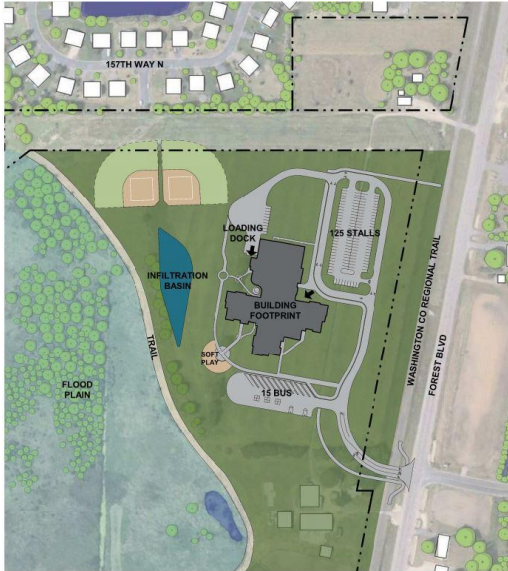


NEW ELEMENTARY SCHOOL DESIGN CRITERIA

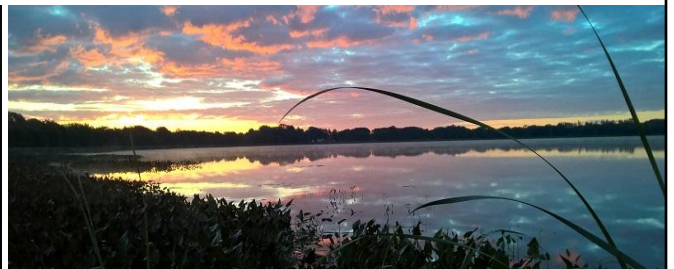
- The building will create **professional spaces for staff** work, collaboration, and storage.
- Space for student projects should be provided.
- The Learning Commons (Media Center) should be flexible, engaging, supportive, and relevant to the work students do.
- Learning spaces for specialists and the **Learning Commons should be centrally located** within the building.
- **Privacy toilet rooms** should be incorporated into the facility.
- There should be a space large enough to hold all students, while being flexible for other uses.
- Spaces for sensory / calming rooms should be **distributed within the Learning Studios**.
- **Flexible spaces** that cater to a variety of group sizes and uses should be incorporated.
- Student services should be located in and be easily accessible to each Learning Studios.
- Learning Studios should have **easy access to the exterior** of the building for outdoor learning opportunities.
- The site design should provide adequate space for parent pick-up and stacking area.
- The playground and **outdoor learning spaces** should be separated from Highway 61 and be accessible from both the cafeteria and Learning Communities (mud rooms).
- The health office should be located within the main office as well as centralized and convenient to the gym and cafeteria.



NEW ELEMENTARY SCHOOL SITE PLAN DESIGN



NEW ELEMENTARY SCHOOL DESIGN INSPIRATION



“The best qualities of **urban** and **rural** living come together in the City of Hugo.

Hugo **blends** the comfort and energy of urban life with nature, outdoor recreation and small town community. This makes Hugo a sought after destination for families, professionals, and outdoor enthusiasts to call home.”



Blending of urban and rural:

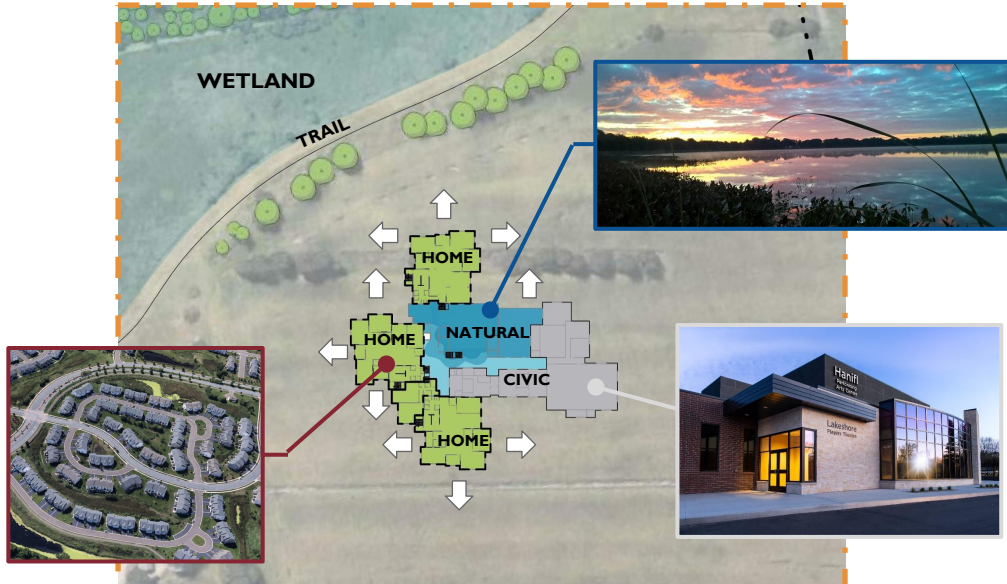
- Civic
- Natural
- Home
- Rural





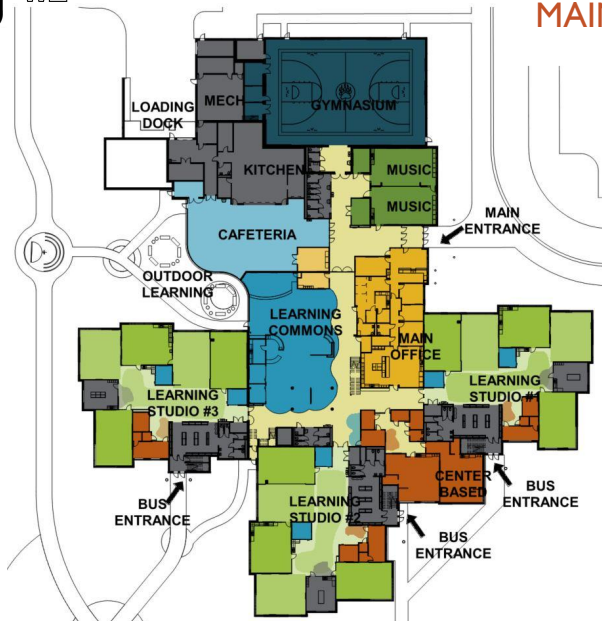
White Bear Lake
Area Schools

NEW ELEMENTARY SCHOOL DESIGN INSPIRATION



White Bear Lake
Area Schools

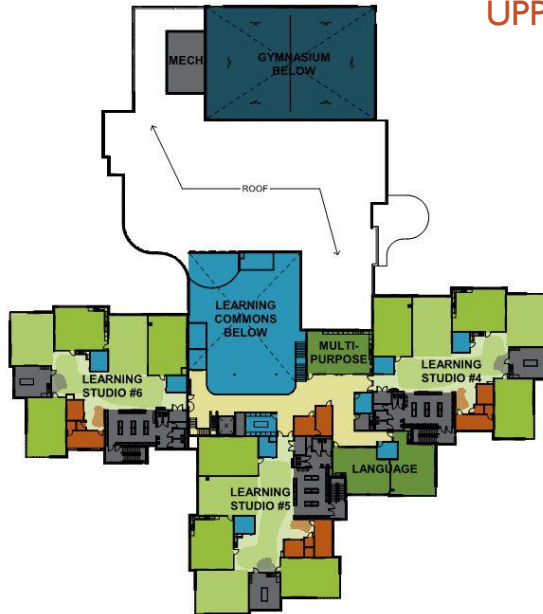
NEW ELEMENTARY SCHOOL MAIN LEVEL FLOOR PLAN





White Bear Lake
Area Schools

NEW ELEMENTARY SCHOOL UPPER LEVEL FLOOR PLAN

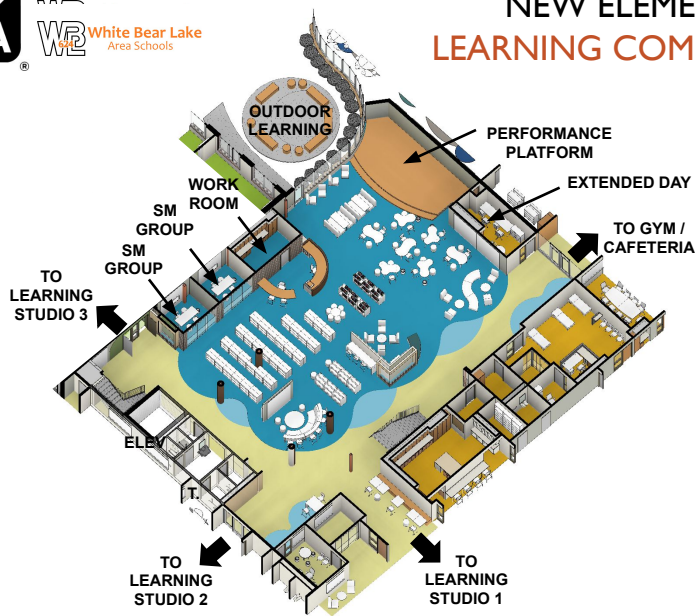


White Bear Lake
Area Schools

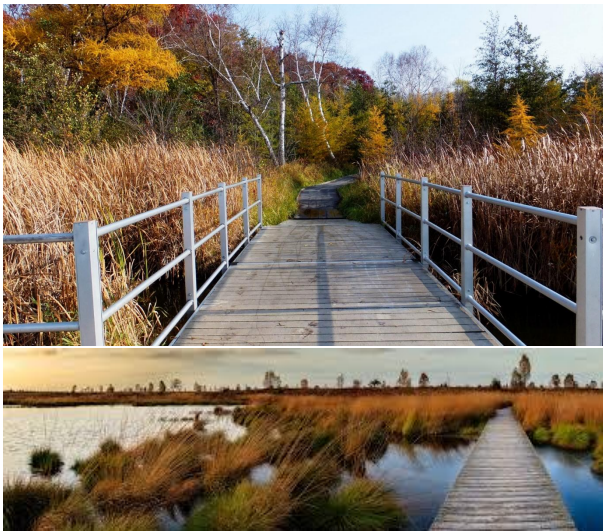
NEW ELEMENTARY SCHOOL LEARNING STUDIO DIAGRAM



NEW ELEMENTARY SCHOOL LEARNING COMMONS DIAGRAM



NEW ELEMENTARY SCHOOL MATERIAL INSPIRATION





White Bear Lake
Area Schools

NEW ELEMENTARY SCHOOL INTERIOR VIEW



Reception



White Bear Lake
Area Schools

NEW ELEMENTARY SCHOOL INTERIOR VIEW



Main Entry Lobby



White Bear Lake
Area Schools

NEW ELEMENTARY SCHOOL INTERIOR VIEW



Gymnasium



White Bear Lake
Area Schools

NEW ELEMENTARY SCHOOL INTERIOR VIEW



Cafeteria



White Bear Lake
Area Schools

NEW ELEMENTARY SCHOOL INTERIOR VIEW



Learning Commons from Main Office



White Bear Lake
Area Schools

NEW ELEMENTARY SCHOOL INTERIOR VIEW



Learning Commons from Upper Level Balcony



White Bear Lake
Area Schools

NEW ELEMENTARY SCHOOL INTERIOR VIEW



Learning Studio Entry



White Bear Lake
Area Schools

NEW ELEMENTARY SCHOOL INTERIOR VIEW



Learning Studio Flex Area



White Bear Lake
Area Schools

NEW ELEMENTARY SCHOOL INTERIOR VIEW



Learning Studio Flex Area



White Bear Lake
Area Schools

NEW ELEMENTARY SCHOOL EXTERIOR VIEW





White Bear Lake
Area Schools

NEW ELEMENTARY SCHOOL EXTERIOR VIEW



White Bear Lake
Area Schools

NEW ELEMENTARY SCHOOL EXTERIOR VIEW





**Recommendation to Board for Bid Award on October 26, 2020
Meeting:**

- Lincoln Elementary (bid opening October 13, 2020)



WHITE BEAR LAKE AREA SCHOOLS



REFERENDUM PROJECTS UPDATE

THANK YOU!



White Bear Lake
Area Schools

AGENDA ITEM: **New Course proposals for 2021-22**

MEETING DATE: **October 26, 2020**

SUGGESTED DISPOSITION: **Discussion Items**

CONTACT PERSON(S): **Dr. Alison Gillespie Assistant Superintendent for Teaching and Learning**

BACKGROUND:

Jen Babiash, Director of Curriculum and Instruction, will present the secondary course proposals for the 2021-22 school year

New Course Proposal

2021-2022



World's Best Workforce

All students college and career ready by graduation

- College & career readiness anchor standards
- Employment trends
- Perspectives from employers, postsecondary institutions, former and current students, etc.
- Equitable access



Types of Proposals

- Course name changes
- Course format
- New Course



3

Course Name Changes

Honors Biology	➡	Biology (10th Grade, Full Year)
International Foods	➡	Food and Society (9th-10th Grade, Semester)
Parenting and Child Development	➡	Child Development (9th-10th Grade, Semester)



4

Course Format

Advanced Placement Psychology

Term: Full-Year

Grades: 11th or 12th grade

Format: In-person or Hybrid

Rationale: The Social Studies department is requesting to add another course format to AP Psychology. The course would be offered as an in-person course or hybrid. The rationale for the change is to provide more options and flexibility for students. The hybrid option would create more independent work time for students and reserve in-class time for more discussion and application of concepts with teacher support.



5

Middle School Science Course Sequence

- Course change to align with 2019 MN Science standards

Current Course Sequence

6th Physical Science

7th Life Science

8th Earth Science

New Course Sequence with New Standards

6th Earth Science

7th Life Science

8th Physical Science

8th Begin MCA IV

2021-2022

2022-2023

2023-2024

2023-2024



New Course

Ethnic Studies History of the United States

Term: Full-Year

Grades: 10th Grade

Prerequisites: None

Description: In this course students will learn US History through a racial equity lens by centering the missing narratives, perspectives and experiences of people of color in the United States. Students will engage deeply with the coursework, which will be highly collaborative and personal and will require students to further develop their skills in critical thinking, reading, writing, and leadership. This course is open to all students who are interested in exploring the history of our country through a racial equity lens, and examining the interrelationship between history, social justice, and understanding systems of power.



7

Student and Teacher Panel



8

**What questions do you
have?**



AGENDA ITEM: **Learning Model Planning Update**

MEETING DATE: **October 26, 2020**

SUGGESTED DISPOSITION: **Discussion Items**

CONTACT PERSON(S): **Dr. Wayne Kazmierczak, Superintendent**

BACKGROUND:

An update will be provided as we prepare for a potential learning model change.