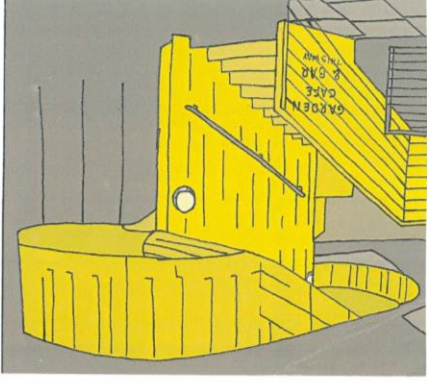


A-Level

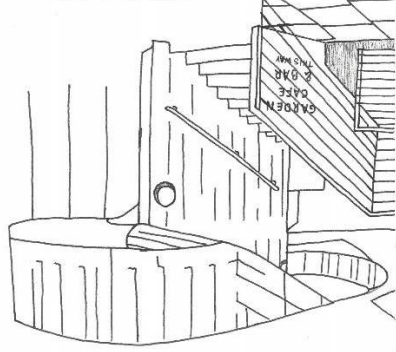
Art

Example of A Grade

You confuse me



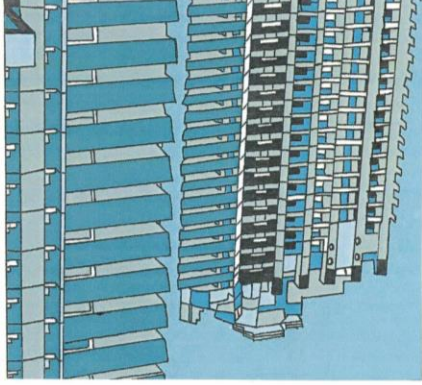
You confuse me



You confuse me



*This awkward
space between us*



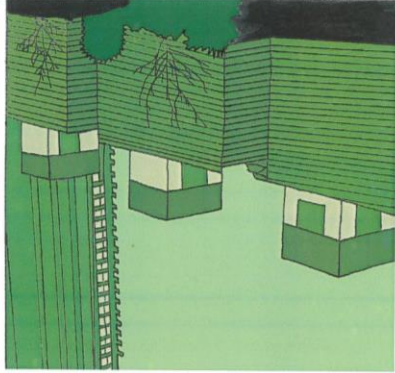
*This awkward
space between us*



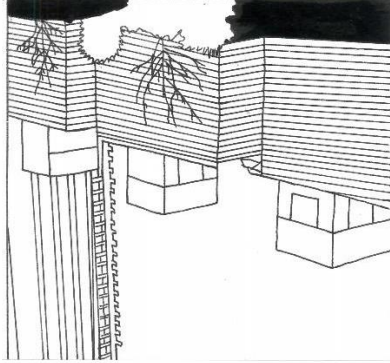
*This awkward
space between us*



You are in all of it



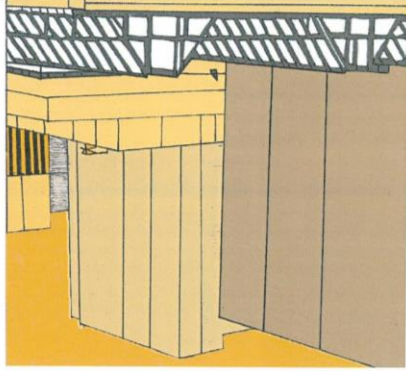
You are in all of it



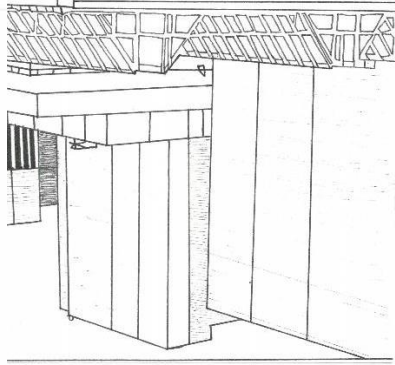
You are in all of it



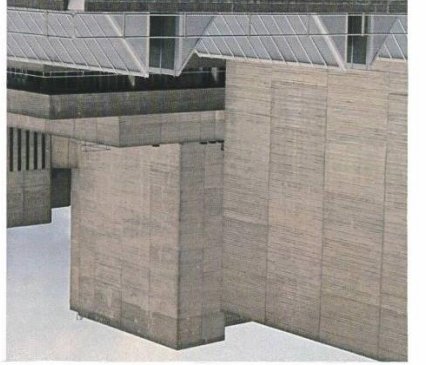
*My mind is quick to
forget "stuff"*

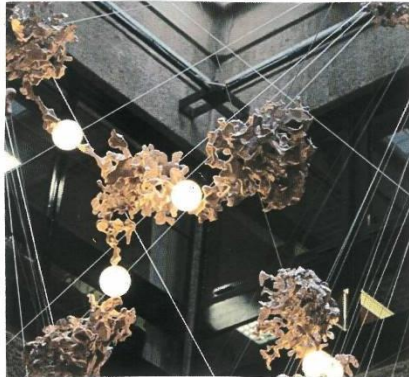


*My mind is quick to
forget "stuff"*

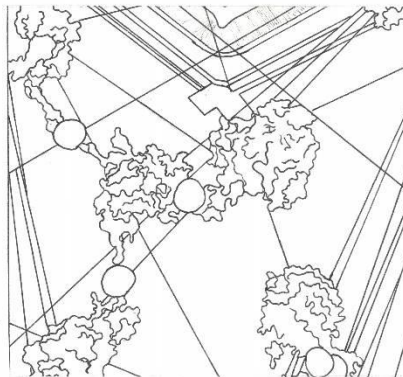


*My mind is quick to
forget "stuff"*

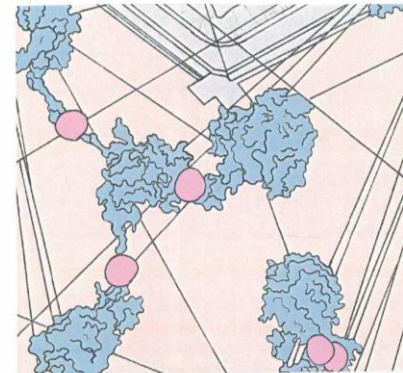




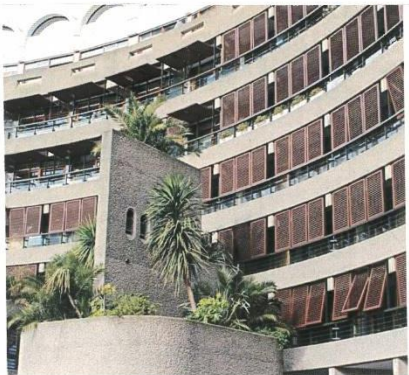
*I wasn't fine before
you, and I don't know
if I'll ever be fine
without you*



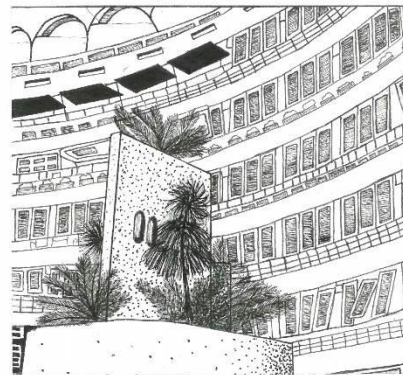
*I wasn't fine before
you, and I don't know
if I'll ever be fine
without you*



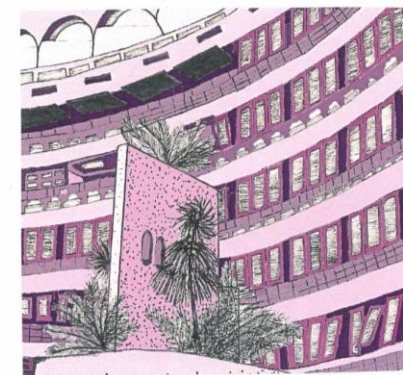
*I wasn't fine before
you, and I don't know
if I'll ever be fine
without you*



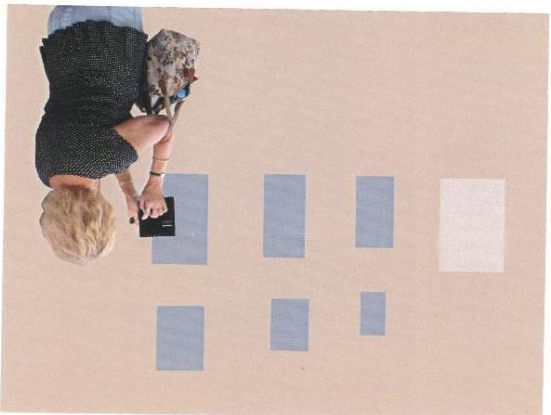
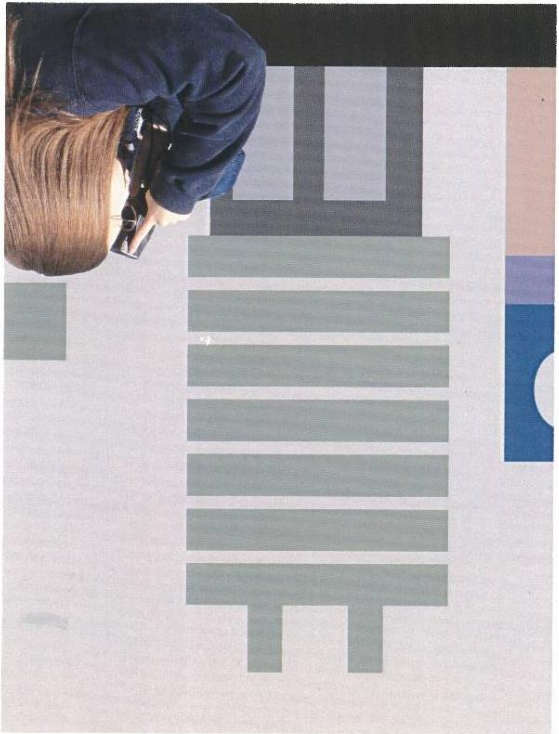
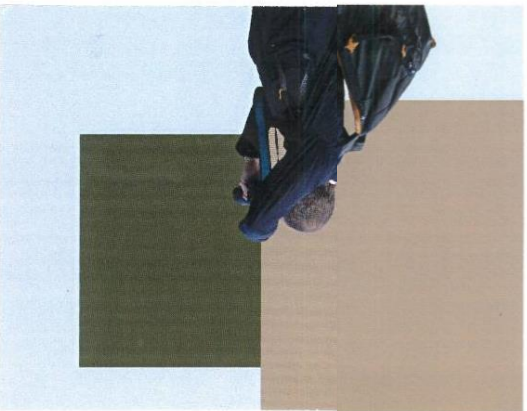
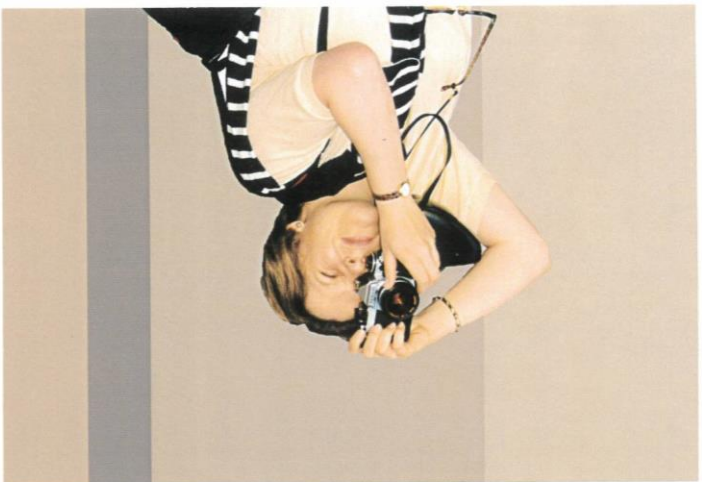
*I don't know if I know
you anymore*

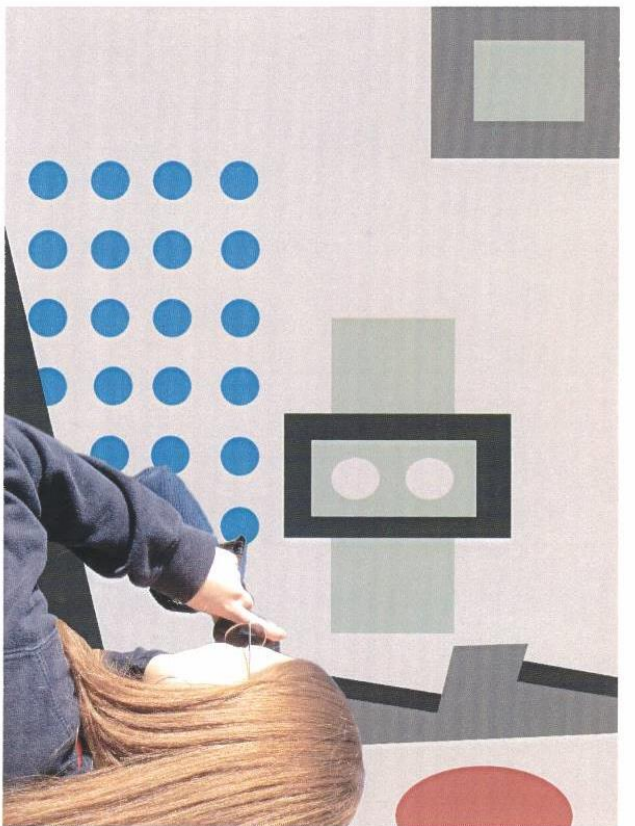
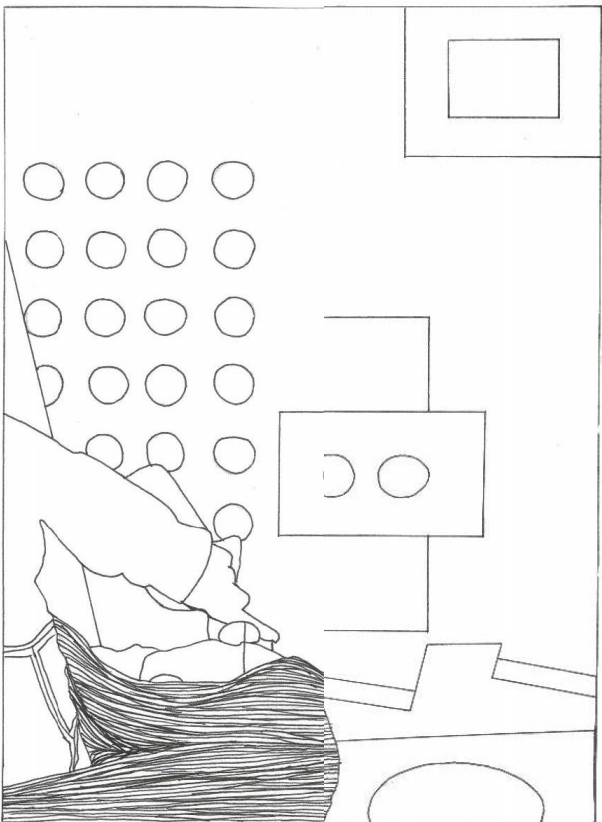
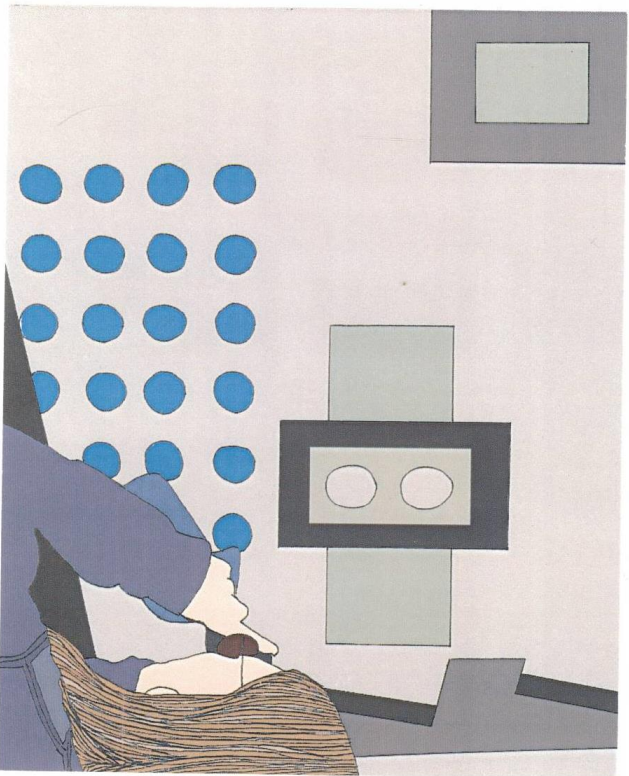
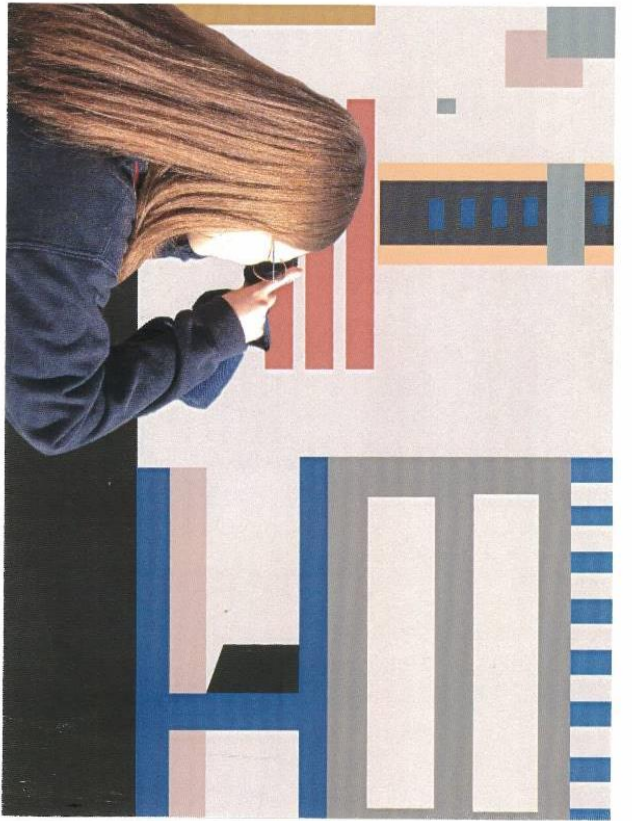
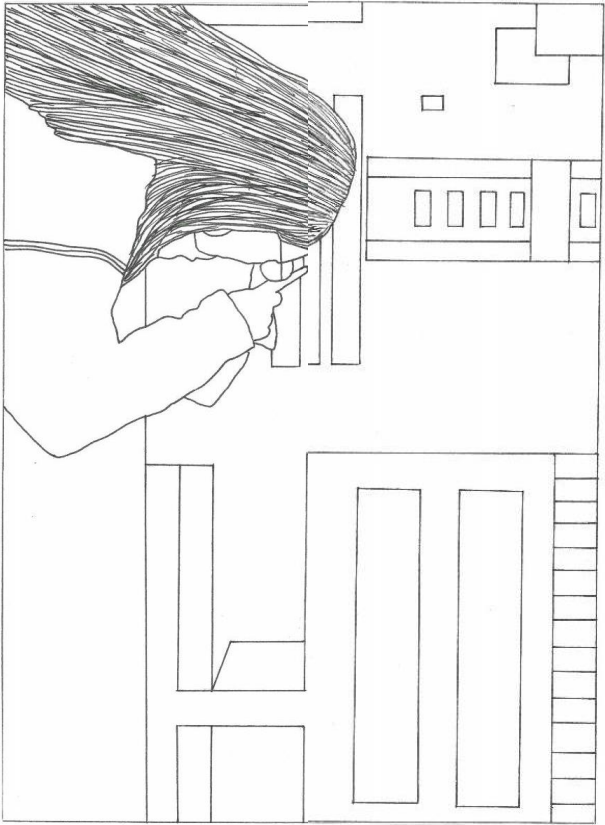
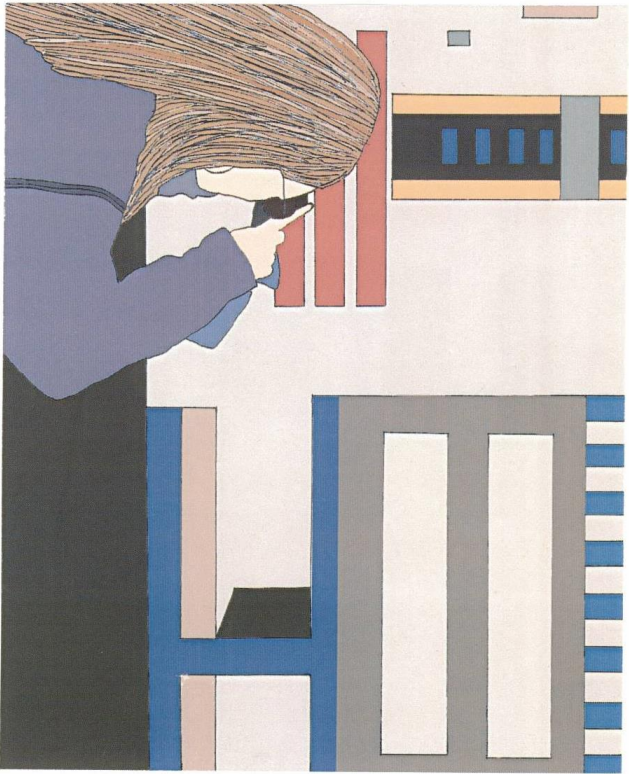


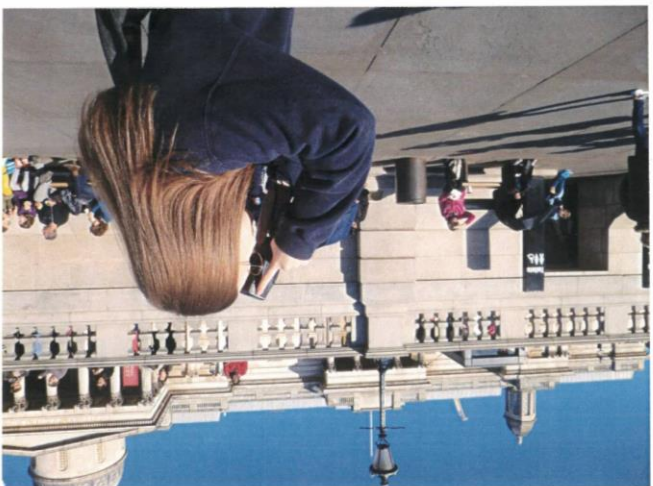
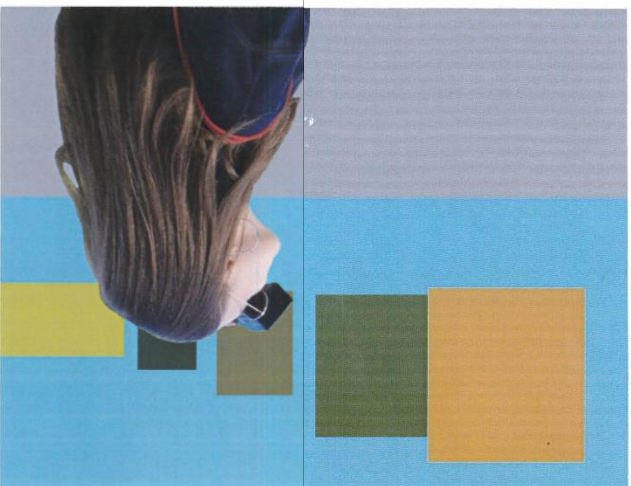
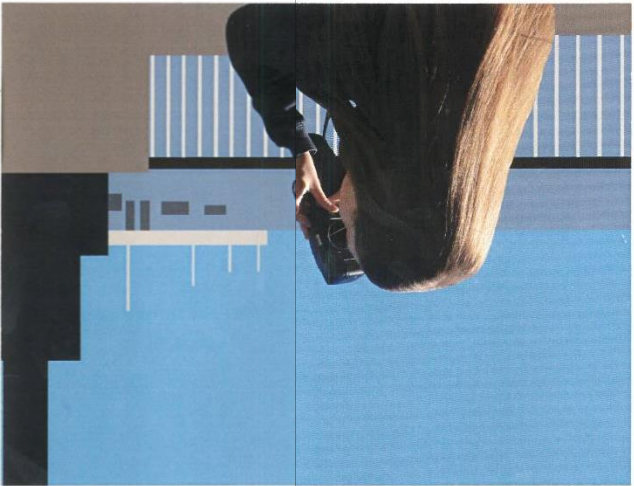
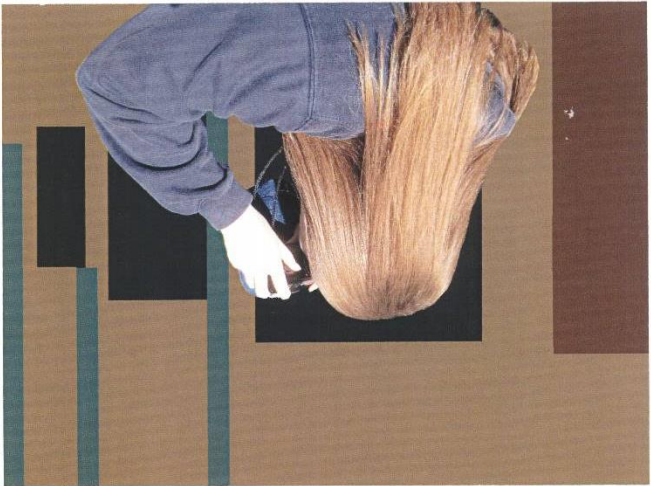
*I don't know if I know
you anymore*



*I don't know if I know
you anymore*







A spectator is a person who looks on or watches and observes, a person who is presented views a spectacle or display. A participant is a person who takes part or contributes to something.

Contemporary society has amplified an interest in documenting oneself. As technology has improved and social media has become popular, the number of images being taken has increased substantially. The development of the selfie on a phone camera is recent phenomenon but could be seen as development of the self-portrait which can be traced back to the mid-14 century. Rembrandt was a celebrated artist from the 1600s who created close to one hundred self-portraits. It has always been in our nature to record and document, self-portrait was another medium of doing this. Spanish romantic painter Goya, who was considered the most important Spanish artist of the late 18th and early 19th centuries took inspiration from Rembrandt. Goya created unique and mesmerising artwork, including several self-portraits and many more portraits.

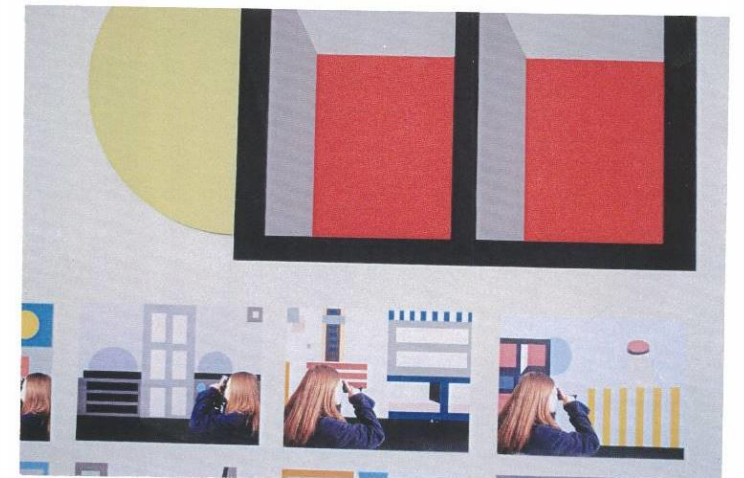
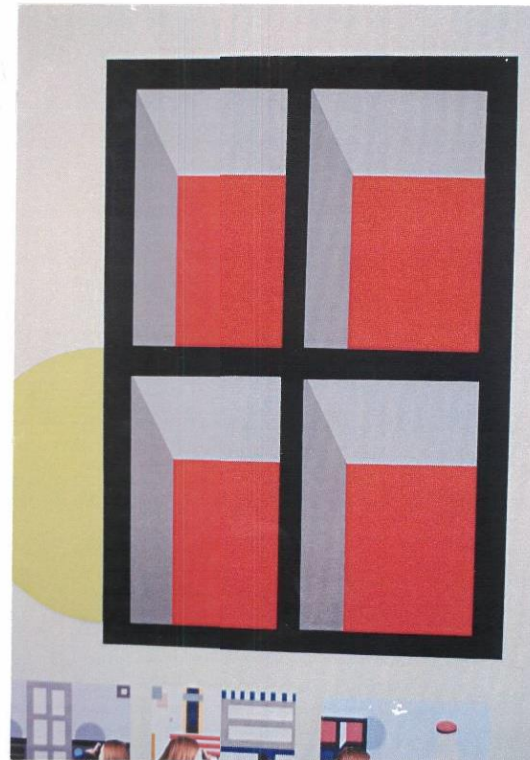
When uploading our images onto social media, we post our best self, the images that we believe are most desirable. Although the images are real and true they are a manipulated and filtered to look better and more attractive. On Instagram and Facebook, the images that people post are the happier, filtered part of their life. We can also question if the participants are enjoying the moment or are focused on the documentation of that moment.

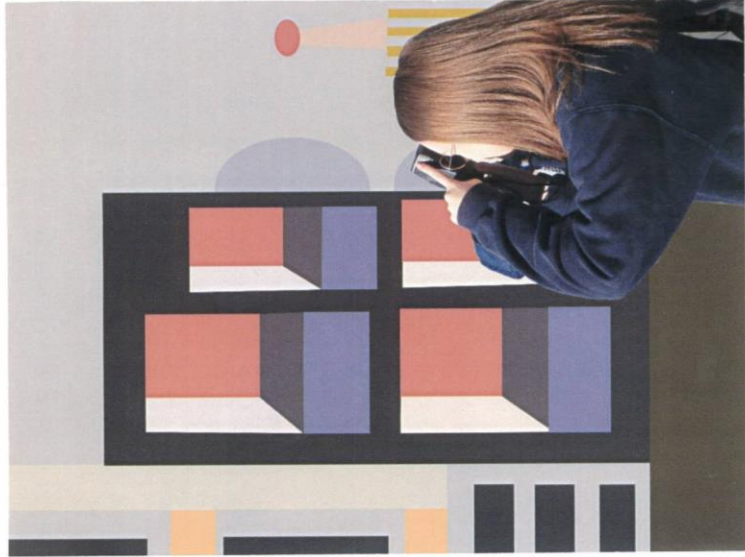
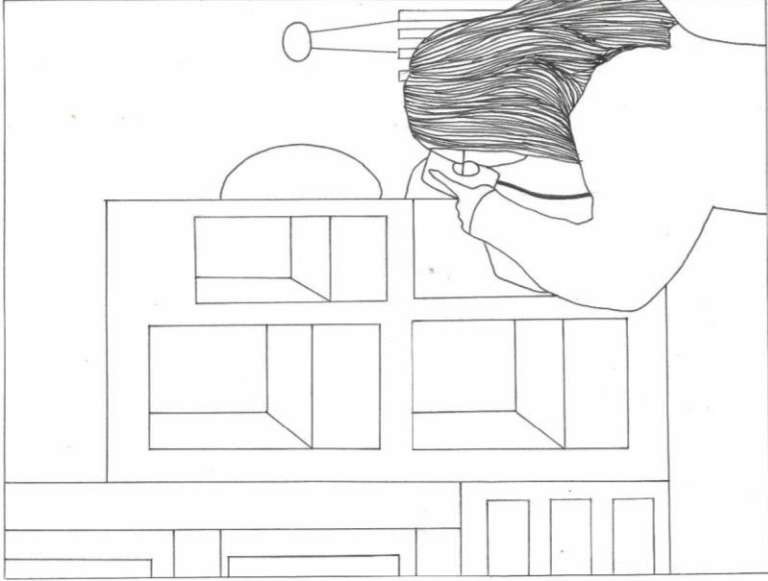
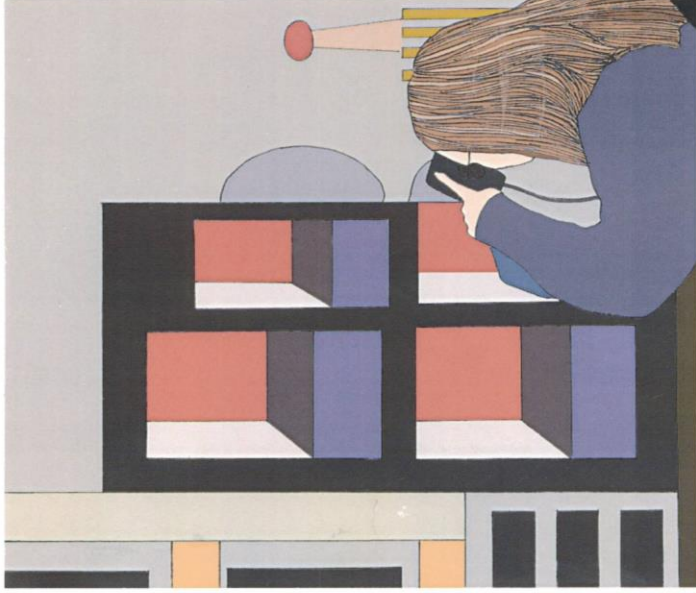
As a spectator of a photograph we perceive an image in our own way. By looking at the image the spectator will create their own imagined vision of that person's life and their personality. The spectator is also manipulated by the person who posts the images, as people only display what they want you to see. So, although the spectator is seeing this person's life through their images, they are merely seeing the specifically selected and filtered version. This memory manipulation can also apply to a spectator who is viewing an image they themselves took. Even though that person was present in that moment, by making that physical object that memory is altered. They will forever remember what is in the image rather than what was in the moment.

The idea of capturing and holding onto a moment for as long as possible is a key motivation for tourist photography. These photos encapsulate the romanticism of adventuring to a new land and seeing things for the first time. With the image as a souvenir or keep sake, all the worries of that moment are removed and you are left with a beautiful memory and evidence to prove this fact.

As a tourist you have expectation of what the place you're going to visit will be like. These expectation can be drawn from images they have seen of it. Whether these expectations are lived up to or not, doesn't matter with a tourist. There is always the excitement of visiting a new place that comes along with the experience. Therefore, even if this new place they've visited isn't as they imagined, they're not disappointed because it is new for them and they are discovering it for the first time. Yet, these perceptions of that area are completely different to someone who would see it every day. The resident would have completely different expectation of this area as for them it is mundane and disinteresting. They see it as part of their route to get to their destination. So their expectations of the place cannot be disappointed because they have none.

By dissecting my images, it allowed to show the world in its simplest form. Breaking them down to their main solid blocks of colour, permitted to view them from a completely different angle. The use of colour helps to define the different spaces and give credit to the scale of the architecture and buildings. Creating a sense of grandeur and opposing simplicity. Examining the spectator within the image parallels to the viewer observing the piece. As a viewer are they gaining enjoyment from their spectatorship? By looking at someone looking.





P1030981



P1030980



P1030979



P1030978



P1030977



P1030986



P1030985



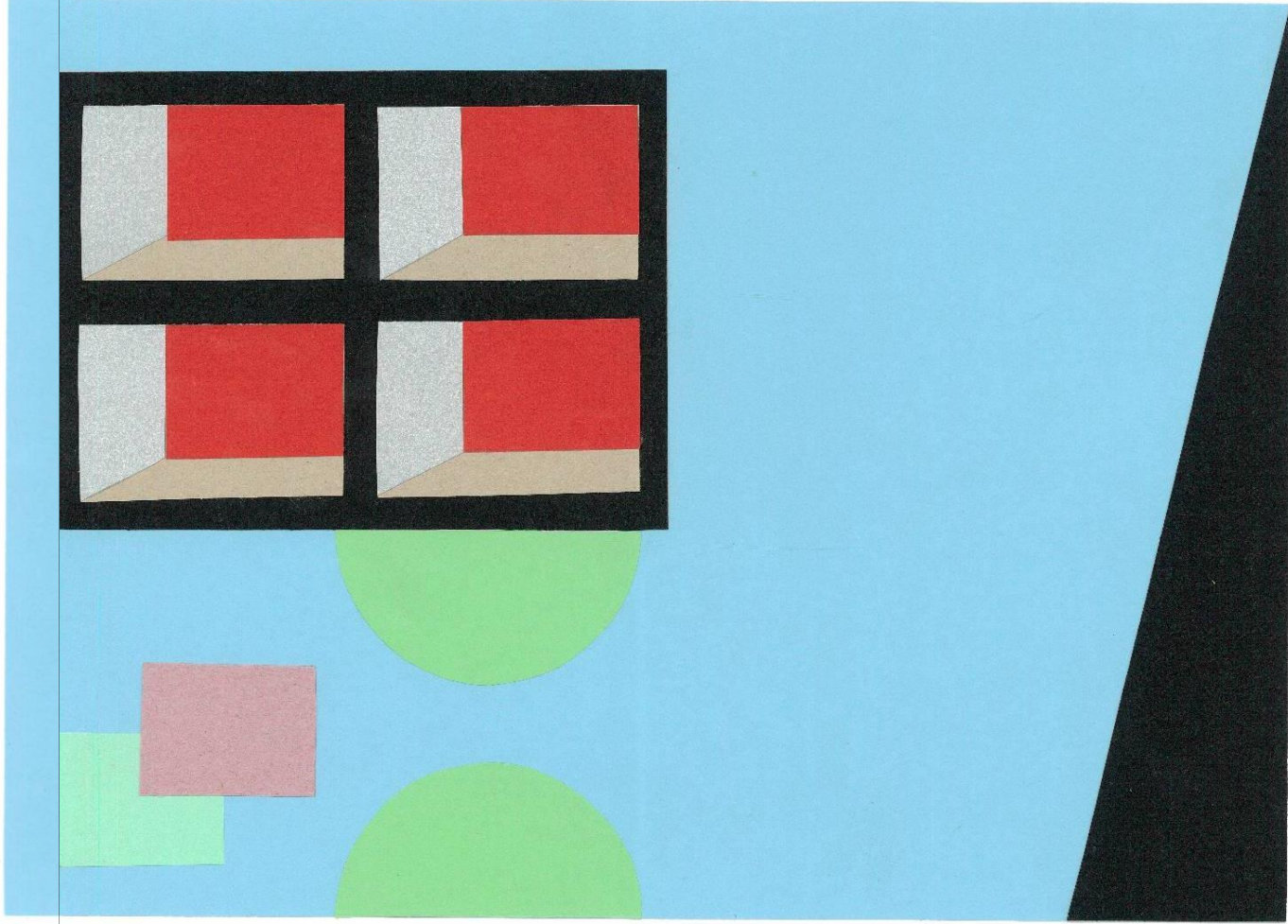
P1030984



P1030983



P1030982



FINAL PIECE:

- Have massive board - some size as school triangle ones
 - ↳ plywood
 - ↳ go to premises office to measure (in hall)

- Find coloured poster paper - white on one side, colour on other

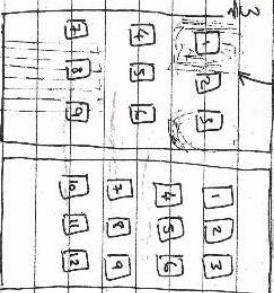
- Poster paper will be cut & stuck onto board, as background

- Hang final images onto board
 - ↳ other rooms, Canadian ones etc
 - ↳ in style of du Rasquier

Size of hall boards:

About 4ft by 6ft (or just under) 3.9 5.9

4ft - 8cm (0.26ft) = 3.74ft
6ft - 0.26ft = 5.74ft

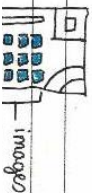


SIZE BOARD NEEDS TO BE:

3.74ft → 1139.952mm 4ft → 1219.2mm
5.74ft → 1749.552mm 6ft → 1828.8mm



- Use coloured thick paper to create background
- Include images into piece e.g. use them as squares



FINAL PROJECT:

- Lining paper
- Paste 1 wall paper
- Plywood board

WALL PAPER PLACES:

- DIRECT WALLPAPER
- www.directwallpaper.co.uk
- Mill Length Service

USE PAPER

PLYWOOD PLACE:

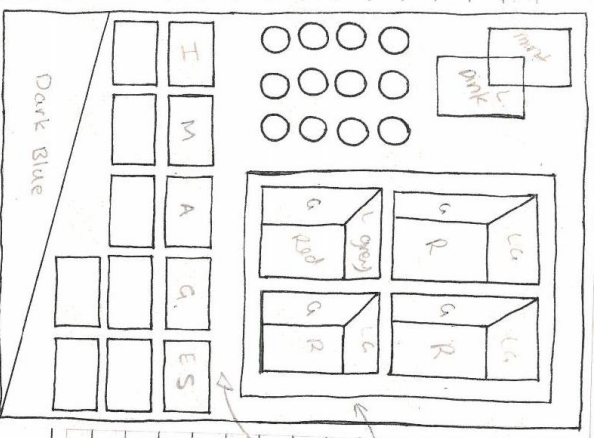
- B&Q
- MDF Board (119mm) (N) 1220 (L) 2440 £16.80
- Plywood (119mm) (N) 1220 (L) 2440

4ft = 122cm - 120cm 9mm thickness
6ft = 183cm - 180cm

- 20cm 100cm 160cm

FINAL IDEA FOR FINAL PIECE:

FIRST IDEA:



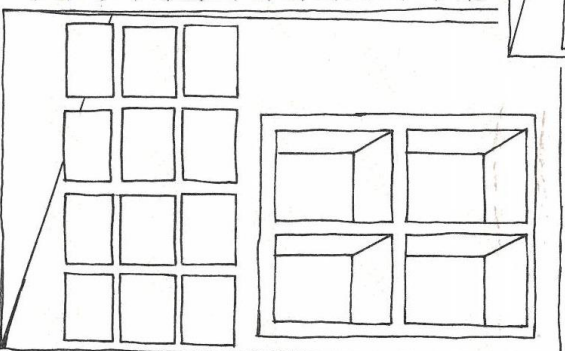
either light blue, grey or off white

6cm

1cm

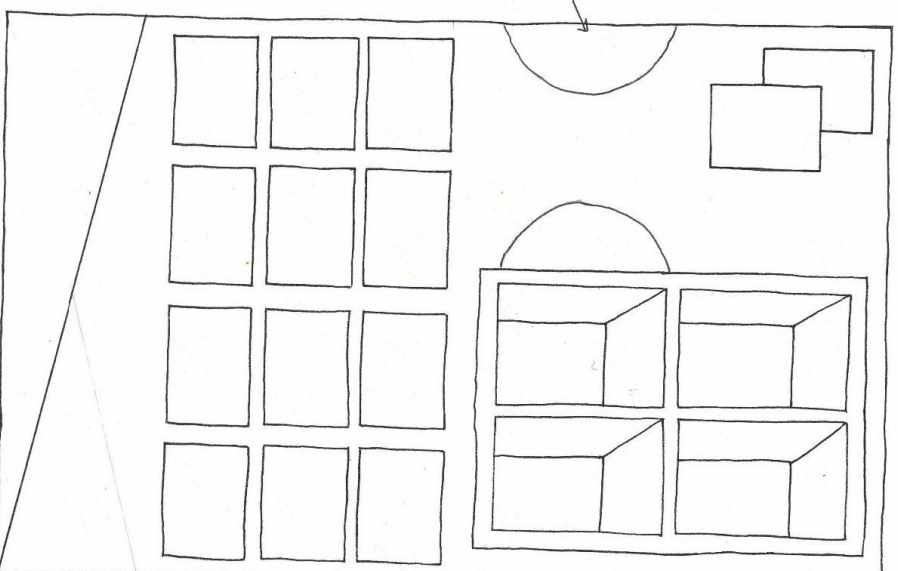
SECOND DRAWING:
But measurements more accurate

10cm



light green

16cm



10cm

10cm so measurements

