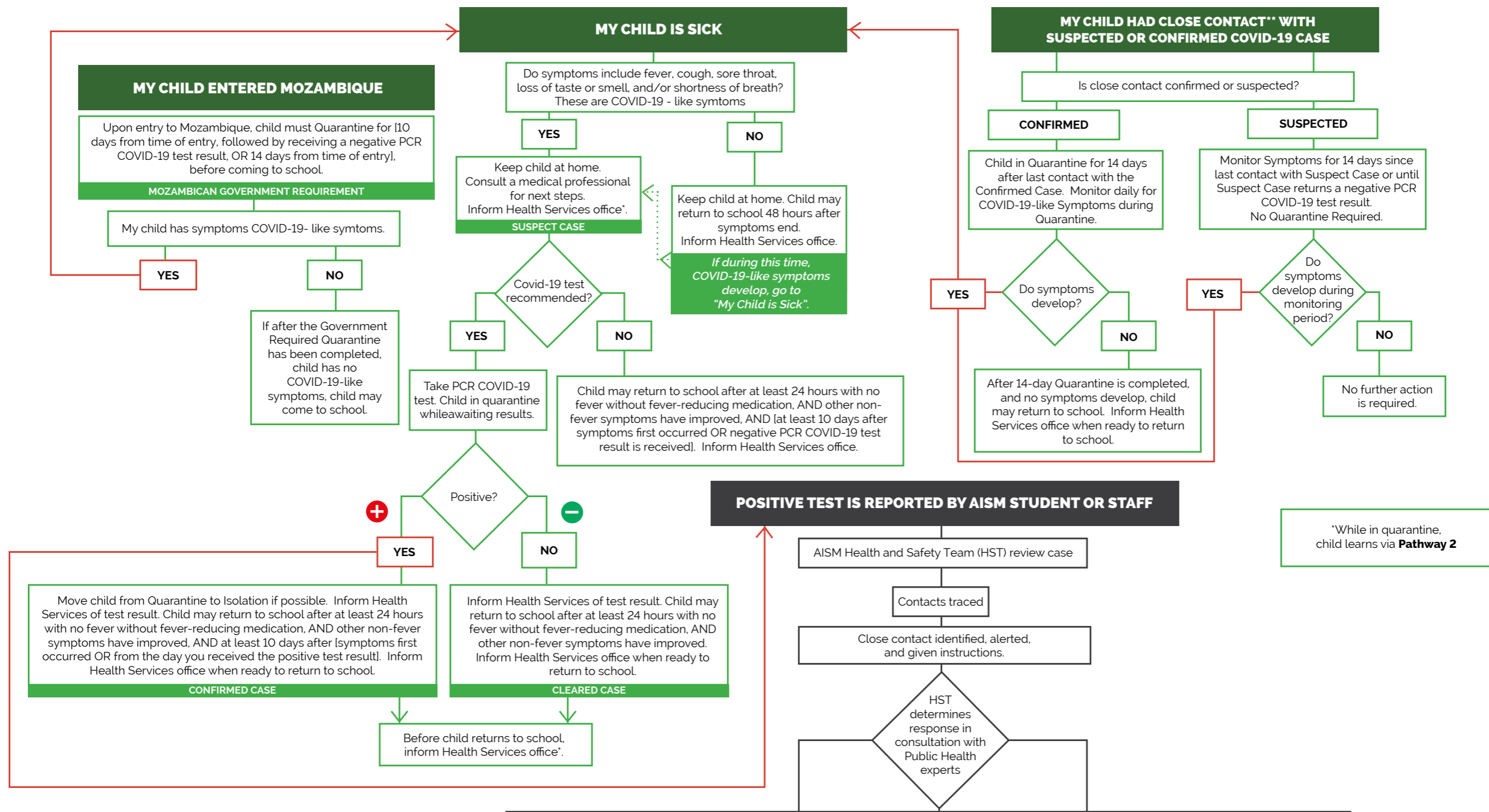




# COVID-19 CASE REVIEW FLOWCHART



Depending on context, HST may recommend a change in the Reopening Level of the school. The School Director will seek advice from various stakeholders, including the Campus Reopening Task Force and the Board of Directors, and announces a change in the Campus Reopening Level if warranted. A minimum of Learning Pathways 2 and 3 (Virtual Learning) will remain available, with restrictions potentially being lifted or imposed for Learning Pathway 1 (On-Campus Learning). Learning Pathways available at the various Reopening Levels are described in the Reopening Parameters.

**CLOSE CONTACT, CONFIRMED CASE AND SUSPECT CASE**

**Close Contact:** someone who has been in close proximity (< 1.5m) with another person for more than 15 minutes

**Confirmed Case:** someone who has received a positive PCR COVID-19 test result

**Suspect Case:** someone who:

- has COVID-19-like symptoms (fever, cough, sore throat, loss of taste or smell, shortness of breath), OR
- has been in Close Contact with a Confirmed Case

**Cleared Case:** someone who has satisfied the return to school conditions for either a Confirmed Case or a Suspect Case

**QUARANTINE AND ISOLATION**

**Quarantine:** keeps someone who was in Close Contact with a Confirmed Case away from others (but are not separated from other family members, unless any of them are at high risk for getting very sick from COVID-19)

**Isolation:** keeps someone who is sick OR who tested positive for COVID-19 but is without symptoms away from ALL others, even in their own home

\* Mrs Luciana Dias at Healthservices@aism-moz.com or +258 87 975 5247 \*\* Close contact means face-to-face contact within 2 meters or in a closed space for more than 15 minutes with a person with COVID-19. This contact happened while the person with COVID-19 was still "infectious," i.e. from 2 days before sickness onset and while symptoms persist. Source: <https://www.cdc.gov/coronavirus/2019-nCoV/index.html>

