The background is a light blue gradient representing water. On the left, there are stylized blue seaweed or coral-like shapes. In the top left, a large blue dolphin swims towards the right. In the top right, two more blue dolphins swim towards the left. In the center-right, three small blue fish swim together. At the bottom, there are dark blue wavy lines representing the ocean floor. On the left side of the floor, there is a small blue star. On the right side, there is a blue star and a cluster of blue coral. The text "Nixon School Reopening Information for Parents" is centered in the middle of the slide in a bold, dark blue font. Below the text, the phrase "Whatever the weather, dolphins swim together!" is written in a yellow, italicized font.

Nixon School Reopening Information for Parents

Whatever the weather, dolphins swim together!

Return Dates for Grade Level Cohorts

Monday, Oct. 12 - First day for Kindergarten Hybrid Cohorts A and B

First day for 1st grade Cohort A

Thursday, Oct. 15 - First day for 1st grade Cohort B

Monday, Oct. 26 - First day for 2nd and 3rd grade Cohort A

Thursday, Oct. 29 - First day for 2nd and 3rd grade Cohort B

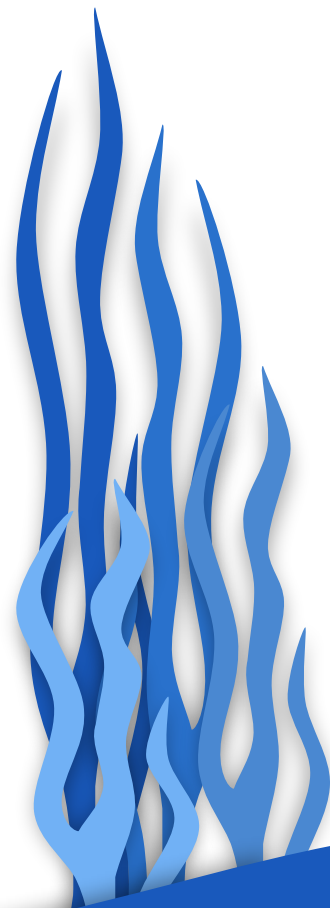
Monday, Nov. 9 - First day for 4th and 5th grade Cohort A

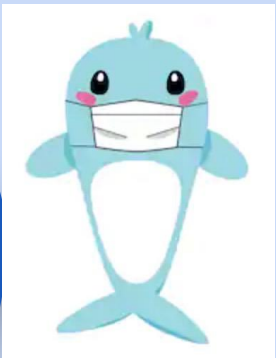
Thursday, Nov. 12 - First day for 4th and 5th grade Cohort B

Information Topics

- Masks & Social Distancing
- Safety Protocols
- Arrival & Dismissal
- Playgrounds
- Covid Testing and Reporting
- Plans for Days Not in School

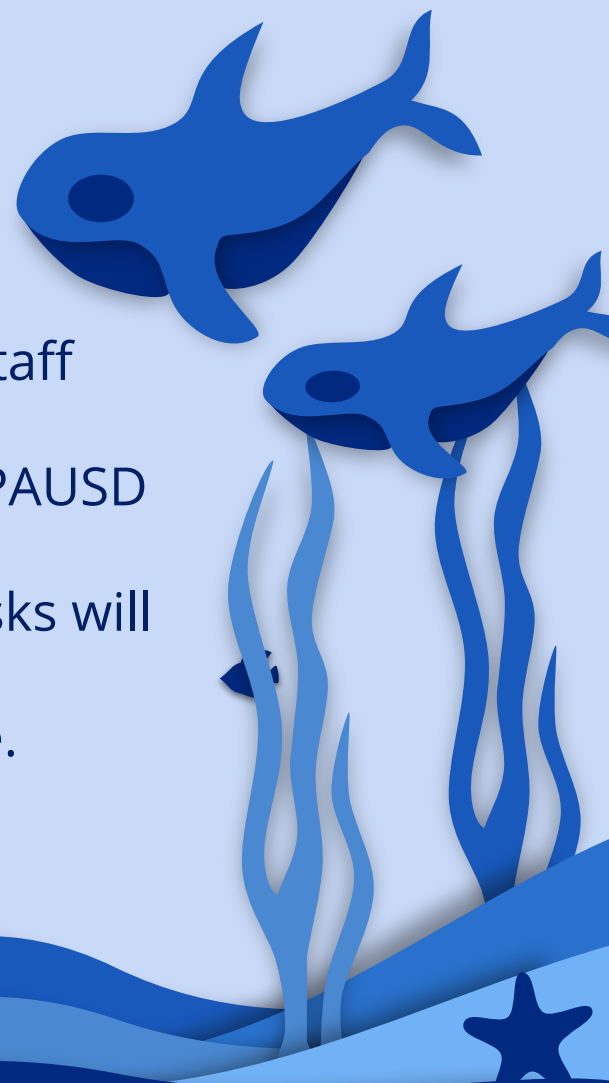
Please refer to pausd.org > Return to Campus Plan for further information.





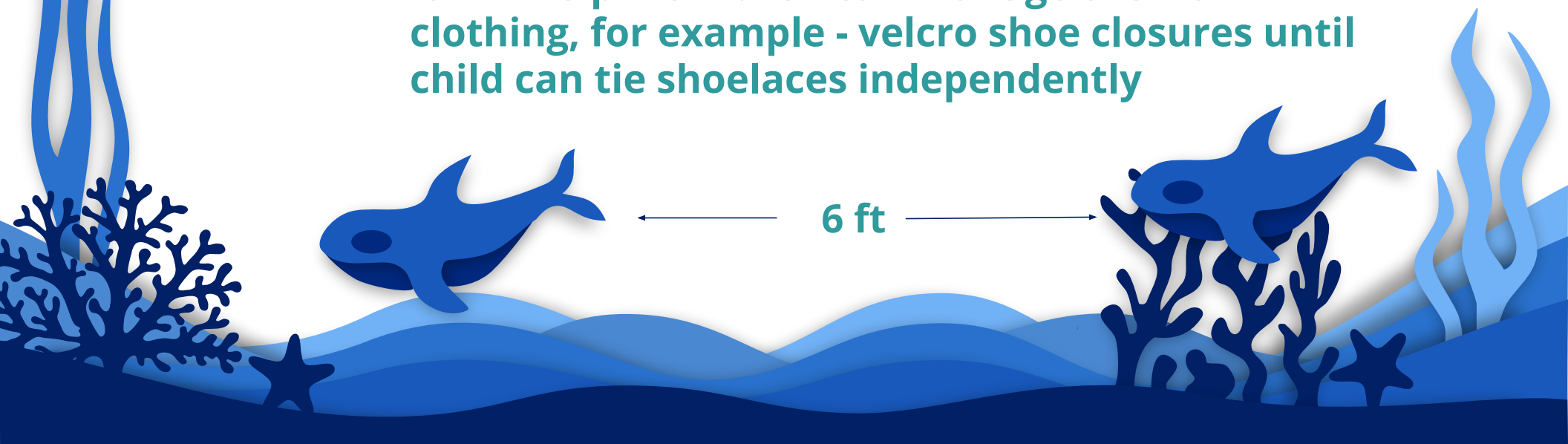
MASKS

- ★ Are required for all students and all staff except when eating/drinking.
- ★ Two cloth masks will be provided by PAUSD and sent home on the first day.
- ★ Spare cloth mask and disposable masks will be available in classroom.
- ★ Label your child's masks on the inside.



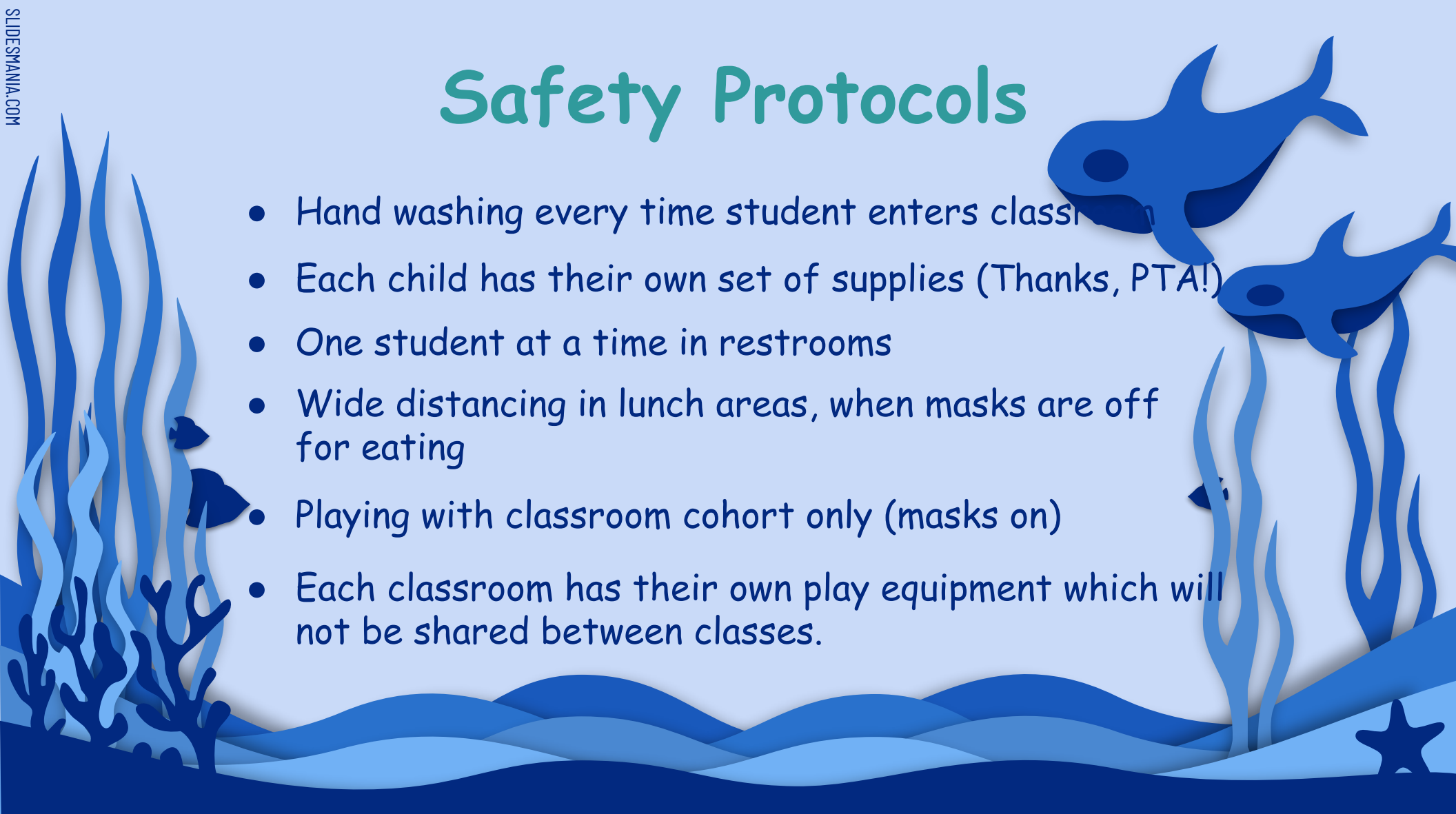
6 Feet Social Distancing

- 
- Desks are placed with 6 ft between students
 - Pavements are marked to support 6ft distancing
 - Signs and reminders have been placed around the school grounds
 - It will help if children can manage their own clothing, for example - velcro shoe closures until child can tie shoelaces independently



Safety Protocols

- Hand washing every time student enters classroom
- Each child has their own set of supplies (Thanks, PTA!)
- One student at a time in restrooms
- Wide distancing in lunch areas, when masks are off for eating
- Playing with classroom cohort only (masks on)
- Each classroom has their own play equipment which will not be shared between classes.



Plastic shield at each desk

For additional safety a plastic shield has been attached to each student desk covering three sides of the desk.



Before Leaving Home



- Daily, before **7:30 am**, complete the Health Screener for each student on Parent Square. Access: Imnixon.org > Health Screener (you must know your PAUSD Parent Portal id and password)
- Help your child think about what needs to come to school; basic supplies stay at home. Is there work to be turned in? Books for reading? Laptop? Teachers will guide this.
- Send a **water bottle** to class with your child and a healthy snack. We have water filling stations. Drinking fountains are not in use.

Arrival Procedures

- ❑ **Kinder, 1st and 2nd graders** arriving to attend school (not Kids Choice) along with any siblings should enter school grounds from Tolman Drive gate. Health screener checkpoint is at the gate
- ❑ **3rd, 4th and 5th graders** with no siblings in K, 1st or 2nd grade should enter school through the drive through drop-off in the lower parking lot off Stanford Ave. Bike riders, walkers and students riding buses on this side of school still must enter through health screener check-in point at top of stairs.
- ❑ Students attending **Kids Choice** should enter school through the drive through drop-off in the lower parking lot off Stanford Ave.

Arrival Procedures

- ❑ We check the Parent Square app at 7:30 am (11:10 am for Kinder B cohort) to see who has not yet completed the form.
- ❑ **Students for whom the form has not been completed cannot enter their classroom.**
- ❑ 3rd- 5th grade students will be asked to complete the form for themselves if parent has not submitted it online. Parents of K-2 students will be asked to complete a paper version of the form, if online form has not been submitted.

Dismissal Procedures

- ★ Students will be dismissed at the same gates through which they arrived. Students are released directly to the adults meeting them.
- ★ It will greatly speed up our process if parents use a large piece of paper with student name and room number to hold up when arriving at the Tolman gate or to put on car window when driving up to school.
- ★ Parents of students riding bikes or walking home alone should communicate this information to classroom teacher.




Playgrounds

- Our playgrounds have been divided into “zones.” Each class plays in the same zone at recess and lunch each day. Classes rotate through the various zones across the days that they are at school.
- Each class has separate playground balls and jump ropes that are not shared between classes and get sanitized between classroom cohorts.
- Students wear masks while playing outdoors so they can be closer than 6 feet while they are outdoors and only with those in their cohort.

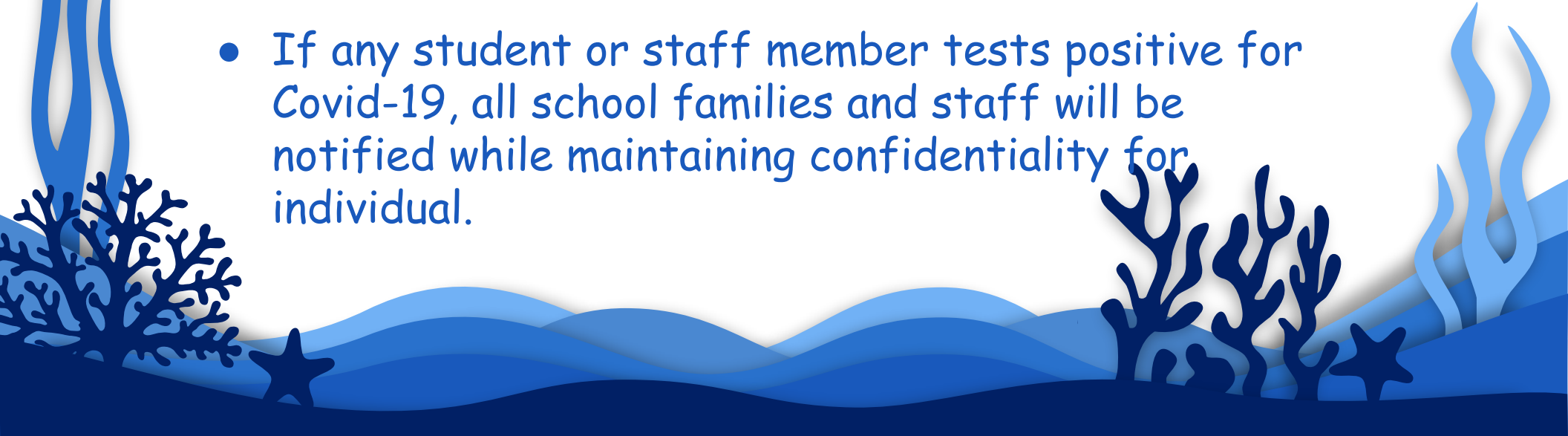
Covid Testing and Reporting

- If a student shows any of the symptoms associated with Covid-19 (fever, chills, sore throat, cough, headache, nausea, etc.), child will be isolated from others and parent will be called to pick up student. Negative Covid-19 test results can be required to return to campus.
- Students are required to be tested for Covid-19 if one or more symptoms develop or if a household member tests positive.

Covid Testing and Reporting

A stylized blue whale is swimming towards the right. It has a white eye and a small white patch on its side. The whale is positioned on the left side of the slide, with its tail near the top left corner.

If student has been in close contact with someone who has tested positive (not necessarily in home), testing is required as well as 14 days of quarantine from date of last exposure.

- If any student or staff member tests positive for Covid-19, all school families and staff will be notified while maintaining confidentiality for individual.
- 
- The bottom of the slide features a stylized underwater scene. It includes blue wavy lines representing the ocean floor, dark blue silhouettes of coral reefs on the left and right, and a few small blue stars scattered across the bottom.

On days your dolphin is not in school

- ★ Start time will also be at 8:00 with entire class at Morning Meeting - synchronous.
- ★ Teacher will guide the student's day
- ★ Some lessons will be synchronous with classroom teacher or specialist
- ★ Time off synchronous zoom will be provided to complete work
- ★ Some lessons will be asynchronous - science, social studies, art

Sample Schedule for Days Not in School

Times	At Home Day	At Home day
8:00 - 8:20	Morning Meeting - both A & B cohorts	Morning Meeting - both A & B cohorts
8:20-10:00	Teacher mini-lesson and independent reading (8:15 - 9:15) Dreambox Math (9:15- 9:30) Library(30 min) (9:30 - 10:00)	Teacher math lesson and independent math work (8:15 - 9:00) GoNoodle stretch (9:00 - 9:10) Writing lesson followed by independent writing time. (9:10 - 10:00)
10:00 - 10:20	Break for snack and play	Break for snack and play
10:20- 11:40	Teacher mini-lesson in writing and independent writing time (10:25 - 11:15) Handwriting practice (11:15 - 11:40)	e.g. PE (30 min) (10:20 - 10:50)
Lunch 11:40- 12:30	Lunch and play	Lunch and play
12:30 - 1:35	e.g. Science Video lesson (12:30- 1:30)	e.g. Music (30 min) (1:00 - 1:30)
1:35	Dismissal	Dismissal

October 21, 2020

We have had a successful start to our re-opening of classrooms with our kindergartners and first graders. Please help us in our expansion to include more students at higher grade levels. We need parents to routinely complete the Health Screener online, and to model our Lifeskills of Patience, Flexibility, Cooperation, and Problem Solving. A Sense of Humor will also help us to move through this together!

Whatever the weather, dolphins swim together!

- Mary Pat O'Connell, Principal

