

BOARD OF COOPERATIVE EDUCATIONAL SERVICES  
**REPORT CARD**



- Career and Technical Education
- Alternative Education
- Adult Career and Technical Education
- Adult Basic Education
- Special Education
- Professional Development
- Technology Services
- School Library System Services
- 2016-2017** Expenses

**2016-2017**

**Orange-Ulster BOCES**

**Orange-Ulster BOCES  
Board of Cooperative Educational Services  
2016-2017 Report Card**

**Table of Contents**

	<b>Page</b>
<b>Component/Non-Component District List.....</b>	<b>ii</b>
 <b>Indicators of BOCES Performance</b>	
<b>Career &amp; Technical Education.....</b>	<b>1-3</b>
<b>Alternative Education.....</b>	<b>4-6</b>
<b>Adult Career &amp; Technical Education.....</b>	<b>7</b>
<b>Adult Basic Education.....</b>	<b>7</b>
<b>Special Education</b>	
<b>Special Education Enrollment and Tuition in BOCES Programs.....</b>	<b>8</b>
<b>State Testing Program.....</b>	<b>9-11</b>
<b>Professional Development.....</b>	<b>12</b>
<b>Technology Services.....</b>	<b>13</b>
<b>School Library System Services.....</b>	<b>14</b>
 <b>2016-2017 Expenses.....</b>	 <b>15</b>

Prior editions of the BOCES Report Card included other data representing information on component districts.

The following data were not included in this report.

- ❖ State Testing Program for All Component Districts
- ❖ Graduation Results

**Orange-Ulster BOCES**  
**449-00000000**

**Component Districts**

- Chester UFSD
- Cornwall CSD
- Florida UFSD
- Goshen CSD
- Greenwood Lake UFSD
- Highland Falls-Fort Montgomery CSD
- Kiryas Joel Village School UFSD
- Marlboro CSD
- Middletown ECSD
- Minisink Valley CSD
- Monroe-Woodbury CSD
- Pine Bush CSD
- Port Jervis CSD
- Tuxedo UFSD
- Valley Central SD
- Warwick Valley CSD
- Washingtonville CSD

**Non-Component Districts**

- Newburgh CSD

# Indicators of BOCES Performance

## Career & Technical Education (CTE)

BOCES CTE classes, offered primarily on a half-day basis, prepare high school students from component districts for skilled work force careers. Most CTE programs require two years to complete.

Number of 11<sup>th</sup>/12<sup>th</sup> grade students enrolled in a CTE two-year sequence:

First-year students  
 Second-year students  
 Second-year students completing  
 Completers with technical endorsement

General Education Students	Students with Disabilities	General Education Students	Students with Disabilities
2015-16	2015-16	2016-17	2016-17
630	354	596	366
488	225	442	224
484	220	434	218
260	114	284	144

### Other Career-Related Programs

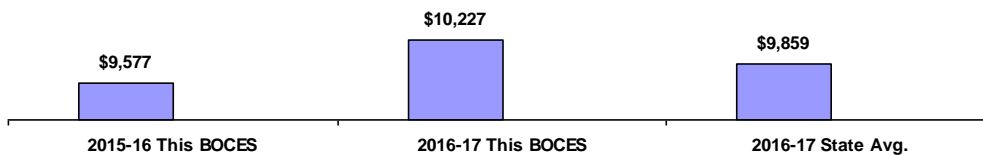
Number of 11<sup>th</sup>/12<sup>th</sup> grade students enrolled in one-year programs:

“New Vision”  
 Participated 1 yr of a CTE Program  
 Other one-year programs

0	0	0	0
78	37	74	31
10	13	20	24

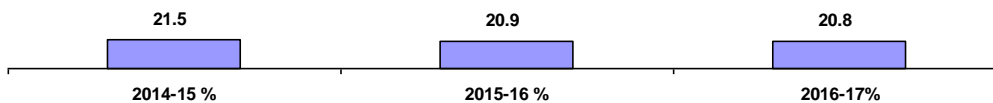
### Tuition Per Student for CTE Programs

Data Source: 602 Report



\*Number Enrolled in CTE Programs as a Percent of all Juniors and Seniors in Component District High Schools

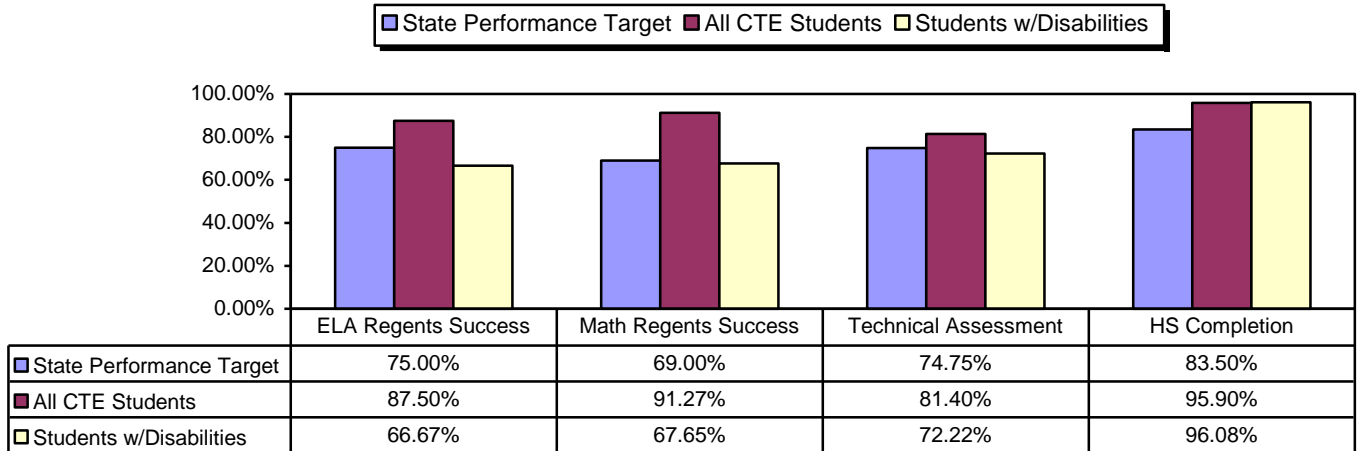
Data Source: SIRS



\* Data Include General Education and Students with Disabilities. Data Source: SIRS

# CTE Student Performance on Perkins Indicators Who Left School in 2016

Data Source: SIRS

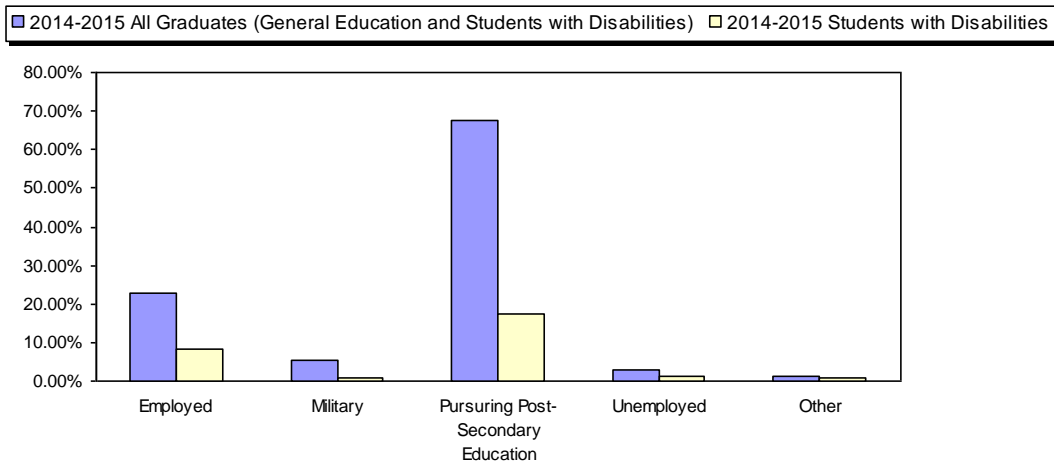


## Status of Career and Technical Education (CTE) Students 2016 Placement Outcomes

BOCES Surveys CTE concentrators six months after they last attended their CTE program to determine if they are employed or continuing their education. *Data Source: CTE Placement Report*  
<http://www.p12.nysed.gov/cte/perkins4/docs/ReportCardfor17-18.pdf>

### Total Placement

This BOCES	State Target
<b>95.83%</b>	<b>91.5 %</b>



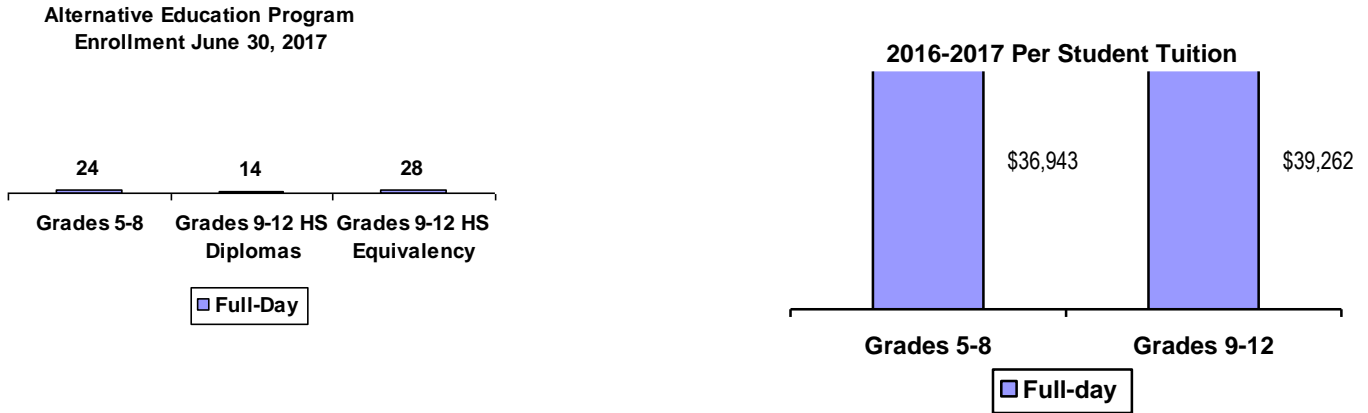
**General Education Development Leading to (GED)  
For CTE Students Age 16-18  
2016-2017**

The GED Test Battery is a national examination that is available to adults who did not graduate from high school or whose diplomas may not be recognized by New York State. In New York State, the GED Tests are offered in English, French and Spanish.

	<b>Grades 9-12 Programs Leading GED</b>	
	<b>Half- day</b>	<b>Full- day</b>
<b>Number of students who:</b>		
<b>Enrolled</b>	NA	NA
<b>Passing Rate of Students Tested</b>	NA	NA
<b>Remained / Still Enrolled in the Program</b>	NA	NA
<b>Left the program and did not enter another district or BOCES program (dropouts)</b>	NA	NA
<b>Returned to School District:</b>	NA	NA

# Alternative Education

BOCES operates full-day and/or half-day programs for general-education students who have been identified as having special needs not being met in school district programs. Programs may include academics, vocational skills, work-study, specialized activities or a combination of these. The BOCES Report Card includes alternative education program enrollment and outcome data for students in grades 5 through 8, as well as students in programs leading to high school diplomas or high school equivalency diplomas.



## Alternative Education Outcomes

The objective of the alternative education program is to retain students until they graduate or return to a regular school setting. Students counted as leaving programs may have done so for a variety of reasons including relocation, medical problems, childcare, incarceration or entering other education programs.

	Grades 5-8		Grades 9-12 Programs Leading to HS Diploma		Grades 9-12 Programs Leading to HS Equivalency Diplomas	
	Full-day	Half-day	Full-day	Half-day	Half-day	Full-day
<b>Number of students who:</b>						
Returned to a school district program	56	0	12	0	2	1
Remained in the BOCES program	24	0	14	0	18	10
Left the program and did not enter another district or BOCES program (dropouts)	0	0	12	0	0	0
Received high school diplomas			10	0		

**Alternative Education State Testing Program**  
**2016-2017 School Year**

State Assessment- Regents Exams	Counts of Students Tested				Percentage of Students Tested		
	Below 55	55-64	65 and Above	Total	Below 55 - Percent	55-64 - Percent	65 and Above - Percent
Integrated Algebra	0	0	0	0	0.0%	0.0%	0.0%
Geometry	0	0	0	0	0.0%	0.0%	0.0%
Algebra 2/ Trigonometry	0	0	0	0	0.0%	0.0%	0.0%
Living Environment	0	0	0	0	0.0%	0.0%	0.0%
Physical Setting/ Earth Science	0	0	0	0	0.0%	0.0%	0.0%
Physical Setting/ Chemistry	0	0	0	0	0.0%	0.0%	0.0%
Physical Setting/ Physics	0	0	0	0	0.0%	0.0%	0.0%
Comprehensive French	0	0	0	0	0.0%	0.0%	0.0%
Comprehensive Italian	0	0	0	0	0.0%	0.0%	0.0%
Comprehensive Spanish	0	0	0	0	0.0%	0.0%	0.0%
Comprehensive Exam in English	0	0	0	0	0.0%	0.0%	0.0%
Global History and Geography	0	0	0	0	0.0%	0.0%	0.0%
United States History and Government	0	0	0	0	0.0%	0.0%	0.0%



**Alternative Education Performance of Students  
2016-2017 School Year**

State Assessment- RCT Exams	Counts of Students Tested				Percentage of Students Tested		
	Below 55	55-64	65 and above	Total	Below 55 Percent	55-64 Percent	65 and Above Percent
RCT – Grade 10 Mathematics	0	0	0	0	0.0%	0.0%	0.0%
RCT – Grade 11 Mathematics	0	0	0	0	0.0%	0.0%	0.0%
RCT – Grade 12 Mathematics	0	0	0	0	0.0%	0.0%	0.0%
RCT – Grade 10 Science	0	0	0	0	0.0%	0.0%	0.0%
RCT – Grade 11 Science	0	0	0	0	0.0%	0.0%	0.0%
RCT – Grade 12 Science	0	0	0	0	0.0%	0.0%	0.0%
RCT – Grade 10 Global Studies	0	0	0	0	0.0%	0.0%	0.0%
RCT – Grade 11 Global Studies	0	0	0	0	0.0%	0.0%	0.0%
RCT – Grade 12 Global Studies	0	0	0	0	0.0%	0.0%	0.0%
RCT – Grade 11 Reading	0	0	0	0	0.0%	0.0%	0.0%
RCT – Grade 12 Reading	0	0	0	0	0.0%	0.0%	0.0%
RCT – Grade 11 Writing	0	0	0	0	0.0%	0.0%	0.0%
RCT – Grade 12 Writing	0	0	0	0	0.0%	0.0%	0.0%
RCT – Grade 11 United States History & Gov't.	0	0	0	0	0.0%	0.0%	0.0%
RCT – Grade 12 United States History & Gov't.	0	0	0	0	0.0%	0.0%	0.0%

## Adult Career and Technical Education (CTE)

Adult CTE programs enhance academic and workplace skills and enable participants to gain employment or career advancement. *Data Source: ASISTS*

	This BOCES		BOCES Statewide
	Count	Percentage	Average
<b>All CTE Programs</b>			
Enrolled during 2015-16	466	0.0%	--
Continuing Enrollment after 2015-16	14	3.0%	16.10%
Completed or Left During 2015-16	452	97.0%	84.89%
Left Prior to Completion During 2015-16	34	7.3%	13.48%
Completed by the End of 2015-16	418	89.7%	87.31%
Completed or Left During 2015-16 and Status Known	363	77.9%	71.30%
Completed/Left/Status Known and Successfully Placed*	276	59.2%	77.06%
Completed but Not seeking Employment	10	2.1%	3.15%
<b>Non-Traditional CTE Programs</b>			
Enrolled in Non-Traditional Programs During 2015-16	18	--	--
Under-Represented Gender Members Enrolled During 2015-16	2	--	--
Completed a Non-Traditional Program By the End of 2015-16	13	2.8%	77.98%
Under-Represented Gender Members Who Completed	2	0.4%	78.22%

\* Successfully Placed means placed in employment, the military or in additional education.

### Adult Basic Education

Based on data reported for the National Reporting System (NRS) for adult education programs, enrollment in adult basic education programs for 2016-2017 was 1465.

#### Educational Gain

Under the NRS, educational gain is the primary goal for students in adult beginning/intermediate programs, adult secondary (low) programs, and in English for speakers of other languages programs. Students are counted as achieving educational gain if they exceed established reference points in their standardized test scores between enrollment and re-testing.

Educational Program	Enrollment			Educational Gain					
	2014-15	2015-16	2016-17	2014-15		2015-16		2016-17	
					Percent		Percent		Percent
Adult Beginning/Intermediate	700	525	434	326	46.6%	274	52.0%	218	50.2%
Adult Secondary (Low)	63	48	37	33	52.4%	25	52.0%	14	37.8%
ESOL	783	870	958	485	61.9%	446	51.0%	591	61.6%

#### Other Outcomes (2014-15 through 2016-17)

The following outcome measures are consistent with the National Reporting System (NRS) for adult education. Students in adult secondary (high) programs are considered to have a primary goal of obtaining a secondary or high school equivalency diploma. For all other outcomes, the student achievements correlate to the students indicating those goals at intake.

Other Outcomes	Students with Goal			Students Achieving Goal					
	2014-15	2015-16	2016-17	2014-15		2015-16		2016-17	
					Percent		Percent		Percent
Entered employment	10	11	NA	9	90.0%	9	82.0%	NA	NA
Retained employment	16	17	NA	16	100.0%	13	76.0%	NA	NA
Obtained secondary or HS equivalency diploma	27	51	NA	24	89.0%	43	84.0%	NA	NA
Entered post-secondary education or training	62	93	NA	39	62.0%	65	70.0%	NA	NA

# Special Education

## Special Education Enrollment and Tuition

When placing students, districts select among classrooms with different student/staff ratios consistent with each student's Individualized Education Program (IEP). The following are four of the alternatives:

- ❖ 12 students per teacher plus one paraprofessional (12:1:1)
- ❖ 6 students per teacher plus one paraprofessional (6:1:1)
- ❖ 12 students per teacher plus four paraprofessionals (12:1+1:3)
- ❖ 8 students per teacher plus 1 paraprofessional (8:1:1)
- ❖ 15 students per teacher plus 1 paraprofessional (15:1:1)
- ❖ 6 students per teacher plus 2.5 paraprofessional (6:1:2.5)

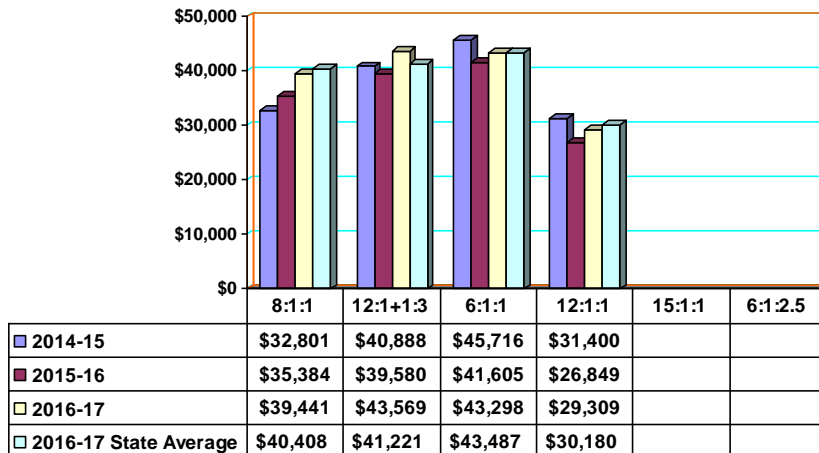
An addendum of enrollment and tuition information will be attached to this report if this BOCES provides other options of student/staff ratios.

Tuition rates exclude the costs of related services, preschool and summer school programs. BOCES with multiple tuition rates for a program have calculated an average rate. *Data source: 602 Report*

### Enrollment Trends

	2014-15	2015-16	2016-17
8:1:1	160	153	133
12:1+1:3	532	569	562
6:1:1	301	295	283
12:1:1	11	10	10
15:1:1	NA	NA	NA
6:1:2.5	NA	NA	NA

### Tuition Rates Per Student 2014-15 through 2016-17



## Special Education State Testing Program 2016-2017 School Year

These data are results of State assessments for students enrolled in BOCES programs.

State Assessment	Counts of Students Tested					Percentage of Students Tested		No Valid Score
	Level 1	Level 2	Level 3	Level 4	Total	Level 2-4	Level 3-4	
						Percent	Percent	
Grade 3 English Language Arts	15	6	0	0	21	28.6%	0.0%	0
Grade 4 English Language Arts	22	1	0	0	23	4.3%	0.0%	0
Grade 5 English Language Arts	17	0	0	0	17	0.0%	0.0%	0
Grade 6 English Language Arts	24	6	0	0	30	20%	0.0%	0
Grade 7 English Language Arts	24	6	0	0	30	20%	0.0%	0
Grade 8 English Language Arts	30	4	0	0	34	11.8%	0.0%	0
Grade 3 Mathematics	17	2	0	0	19	10.5%	0.0%	0
Grade 4 Mathematics	25	0	0	0	25	0.0%	0.0%	0
Grade 5 Mathematics	12	1	0	0	13	7.7%	0.0%	0
Grade 6 Mathematics	23	2	0	0	25	0.8%	0.0%	0
Grade 7 Mathematics	23	4	0	0	27	14.8%	0.0%	0
Grade 8 Mathematics	30	0	0	0	30	0.0%	0.0%	0

Level 4	These students <b>exceed the standards</b> and are moving toward high performance on the Regents examination.
Level 3	These students <b>meet the standards</b> and, with continued steady growth, should pass the Regents examination.
Level 2	These students <b>need extra help</b> to meet the standards and pass the Regents examination.
Level 1	These students have <b>serious</b> academic deficiencies.

**Special Education State Testing Program (cont'd.)**  
**2016-2017 School Year**

State Assessment- Regents Exams	Counts of Students Tested				Percentage of Students Tested		
	Below 55	55-64	65 and Above	Total	Below 55 - Percent	55-64 - Percent	65 and Above - Percent
Integrated Algebra	0	0	0	0	0.0%	0.0%	0.0%
Algebra 1	28	21	18	67	41.8%	31.3%	26.9%
Geometry	0	2	2	4	0.0%	50.0%	50.0%
Algebra 2	0	0	0	0	0.0%	0.0%	0.0%
Algebra 2/ Trigonometry	0	0	0	0	0.0%	0.0%	0.0%
Living Environment	24	13	27	64	37.5%	20.3%	42.2%
Physical Setting/ Earth Science	3	3	4	10	30.0%	30.0%	40.0%
Physical Setting/ Chemistry	0	0	0	0	0.0%	0.0%	0.0%
Physical Setting/ Physics	0	0	0	0	0.0%	0.0%	0.0%
Comprehensive French	0	0	0	0	0.0%	0.0%	0.0%
Comprehensive Italian	0	0	0	0	0.0%	0.0%	0.0%
Comprehensive Spanish	0	0	0	0	0.0%	0.0%	0.0%
Comprehensive Exam in English	0	0	0	0	0.0%	0.0%	0.0%
Regents ELA	32	10	22	64	50.0%	15.6%	34.8%
Global History and Geography	60	11	15	86	70.0%	12.8%	17.4%
United States History and Government	34	5	21	60	56.7%	8.3%	35.0%

**Students with Severe Disabilities Performance on the  
New York State Alternate Assessments  
2016-2017 School Year**

State Assessment	Counts of Students Tested					Percentage of Students Tested		No Valid Score
	Level 1	Level 2	Level 3	Level 4	Total	Level 2-4 Percent	Level 3-4 Percent	
Grade 3 English Language Arts	2	5	18	3	28	92.9%	75.0%	0.0%
Grade 4 English Language Arts	1	2	20	4	27	96.3%	88.9%	0.0%
Grade 5 English Language Arts	1	3	23	6	33	97.0%	87.9%	0.0%
Grade 6 English Language Arts	1	2	22	0	25	96.0%	88.0%	0.0%
Grade 7 English Language Arts	1	1	22	6	30	96.7%	93.3%	0.0%
Grade 8 English Language Arts	1	3	11	4	19	94.7%	79.0%	0.0%
High School English Language Arts	0	7	26	5	38	100.0%	81.6%	0.0%
Grade 3 Mathematics	1	5	20	2	28	96.6%	81.5%	0.0%
Grade 4 Mathematics	3	4	14	6	27	88.9%	74.1%	0.0%
Grade 5 Mathematics	0	10	21	2	33	100.0%	90.0%	0.0%
Grade 6 Mathematics	2	6	15	2	25	92.0%	68.0%	0.0%
Grade 7 Mathematics	0	3	23	4	30	100.0%	63.2%	0.0%
Grade 8 Mathematics	0	7	11	1	19	100.0%	63.2%	0.0%
High School Mathematics	1	5	27	5	38	97.4%	84.2%	0.0%

Data Source: nySTART

Level 4	These students <b>exceed the standards</b> and are moving toward high performance on the Regents examination.
Level 3	These students <b>meet the standards</b> and, with continued steady growth, should pass the Regents examination.
Level 2	These students <b>need extra help</b> to meet the standards and pass the Regents examination.
Level 1	These students have <b>serious</b> academic deficiencies.



## Professional Development 2016-2017 School Year

The data in this chart is from BOCES-sponsored professional development and offered by Instructional Support Divisions.

BOCES provided training in the following areas:	Number of Participants:									
	Districts		Teachers		Paraprofessionals		Principals		Other	
	Full Day	Half Day	Full Day	Half Day	Full Day	Half Day	Full Day	Half Day	Full Day	Half Day
Common Core Learning Standards	0	0	809	56	0	0	2	0	106	5
Data-Driven Instruction	0	0	19	0	0	0	4	0	42	0
Lead Evaluator Training	0	0	18	14	0	0	6	14	89	360
Principal Evaluator Training	0	0	0	0	0	0	0	0	0	0
Integrating Technology into Curricula & Instruction	0	0	123	448	8	3	0	0	72	551
Project Based Learning	0	0	0	0	0	0	0	0	0	0
College & Career Readiness	0	0	21	5	2	0	0	2	12	19
Career and Technical Education	0	0	0	4,742	0	555	0	0	0	0
Middle Level Education	0	0	0	0	0	0	0	6	0	83
Positive Youth Development	0	0	0	6	0	0	0	0	0	106
Instructional Strategies	0	0	790	546	0	39	0	22	205	304
Parent Training	0	0	0	0	0	0	0	0	0	0
Special Education Issues	0	0	975	4,067	61	2,234	1	4	174	1,594
(RSE-TASC ) Regional Special Education Technical Assistance Support	0	0	0	0	0	0	0	0	0	0
(SE-SIS) Special Education School Improvement Specialist	0	0	23	32	0	0	0	0	4	9
RBE-RN	0	0	2	0	0	0	0	0	1	0
Leadership Training	0	0	0	1	0	0	0	2	0	2
ECE Training (Early Childhood)	0	0	6	3	0	0	3	0	59	45
Professional Practice (APPR)	0	0	0	28	0	0	0	0	0	41
Culture/Climate	0	0	492	91	24	2	5	5	584	211
School & District Planning	0	0	82	28	0	0	0	0	75	28
Response to Intervention	0	0	17	0	0	0	0	0	5	0
Data Management and Analysis	0	0	5	3	3	0	0	1	22	19
Learning Standards (ELA, MST, etc.)	0	0	15	27	0	0	0	0	4	1
Interdisciplinary Teaching (including integration of career technology & academics)	0	0	0	0	0	0	0	0	0	0
Other	0	0	160	1,749	94	1,524	0	1	157	1,276



## Technology Services 2016-2017 School Year

Please indicate if the service was provided by BOCES or Regional Information Center (RIC) by placing a X in the correct column.

BOCES provides technology services to district and BOCES staff and students.	Districts / Number of District Staff	Number of BOCES Staff	Students	Provided by the BOCES	Provided by the RIC
Distance Learning	13 / 2,572	13	31,165	X	
Instructional Computing	25 / 5,578	14	70,283	X	
Computer/Audio Visual Repair	0/0	0			
Library Automation/Software	11 / 2,654	4	0	X	
LAN Installation/Support	25 / 5,578	14	70,283	X	
Distributed Process Technicians	25 / 5,578	14	70,283	X	
Guidance Information	25 / 5,578	14	70,283	X	
Administrative Computer Services	25 / 5,578	14		X	
Administrative Training	16 / 3,844	7		X	
Instructional Media Resources	4 / 698	3	0	X	
Model Schools	17 / 4,979	7	63,688	X	
Other Student Instructional Support	25 / 5,578	7	70,283	X	

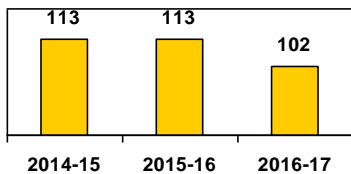




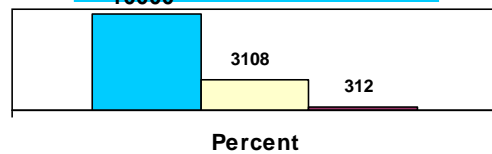
## School Library Systems (SLS)

School Library Systems are state-aided programs set forth in Education Law and regulations of the Commissioner of Education. Each BOCES acts as the educational agency that sponsors the program to provide vital library and information resources to public and nonpublic schools. Each system operates under an approved long range plan of service. Some of the key functions of SLS are: to provide leadership and training through professional development activities; enrich the NYS Learning Standards by providing information literacy awareness and skills; facilitate resource-sharing among its member school libraries; promote advances in technology for information storage and retrieval; focus on cooperative collection development of member school library materials; address the information needs of special client groups; and participate in regional library issues with the public, academic, special and other school libraries. Students, teachers and administrators in each BOCES service area benefit from the programs and services of the school library system. *Data Source: SLS Annual Report*

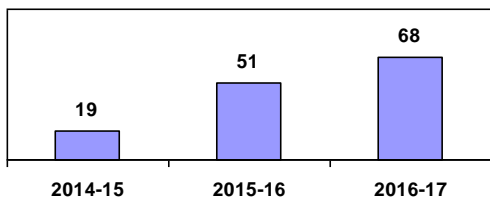
Number of Library Media Centers



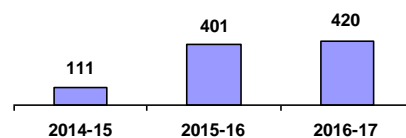
Consulting and Technical Assistance Services plus Reference by SLS Staff



Number of Professional Workshops



Number of Participants at Professional Development Workshops



# 2016-2017 Expenses

Data Source: SA111, schedule 2A

Administrative Expenses.....	\$ 6,007,155.78
Capital Expenses.....	\$ 1,892,012.39
Total Program Expenses.....	\$ 136,258,066.48
Total Expenses.....	\$ 144,157,234.65

