



W-A-Y MICHIGAN
Widening Advancements for Youth

STUDENT TIMELINE

FIRST THINGS FIRST



ENROLLMENT

Verify Enrollment with Team Leader or Director

TECHNOLOGY

Students are assigned technology (If Needed) and scheduled for Induction within one week of enrollment.



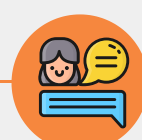
INDUCTION

Students attended 2 day Induction.

- During Induction Students learn about Hero.
- Learn who their mentor and Team Leader is.
- How to complete projects in Hero.
- Add one project per course on their learning plan (6 courses) to their Work Plan (List of Projects).

MENTOR

After Induction students begin communicating with Mentor 3-5 times a week and starting completing projects from Induction.



W-A-Y MICHIGAN
Widening Advancements for Youth

MONTHLY TIMELINE

CHECK YOUR CALENDAR!



SEPTEMBER

- Start of School year
- Update Grade levels
- Start of School Improvement Team/Process
- Initial Perception Survey

OCTOBER

- Fall Count Period
- Fall NWEA MAP Growth Testing
- Start Education Development Plan (EDP) in Xello
- Start of Small Group Live Sessions



NOVEMBER

- Thanksgiving Break

DECEMBER

- Winter Break



JANUARY

- Update Grade Levels
- Start Test Preparation (Method Test Prep or Khan Academy)
- Spring Perception Survey

FEBRUARY

- Spring Count
- Finish Education Development Plan (EDP) in Xello



MARCH

- Spring Break

APRIL

- State Testing (PSAT8, PSAT9, PSAT 10, SAT, ACT Work Keys, and M-Step 8, and M-Step 11)

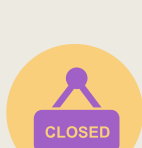


MAY

- State Testing (M-Step 6 and M-Step 7)
- Spring NWEA MAP Growth Testing

JUNE

- Finish work needed for grade promotion or graduation



JULY

- Start of Summer Session
- Office is Closed

AUGUST

- End of Summer Session

