


CAPITAL PROJECTS
MIDDLE SCHOOL
MODERNIZATION UPDATE

A decorative graphic consisting of several parallel white lines of varying lengths, slanted diagonally from the bottom-left towards the top-right, located in the lower right quadrant of the slide.

Build **FOUR** schools in **FOUR** years!

BOND PROMISE WHERE WE BEGAN
ES9 AND ARTONDALE FALL OF 2022
ES10 AND EVERGREEN FALL OF 2023

Build FOUR schools in FOUR years at a
DECREASE in the local school tax rate from 2018!

CONSTRUCTION TIMELINE SHIFTED AFTER BOY'S AND GIRL'S CLUB BUILDING PURCHASE ANNOUNCED



Add new school # 9

Estimated opening fall 2021

Add new school # 10

Estimated opening fall 2022

Replace & expand Artondale Elementary

Estimated opening fall 2021

Replace & expand Evergreen Elementary

Estimated opening fall 2022



PIONEER (ES10)
BID DEC 2019

SCHEDULED COMPLETION
JAN 2021





ES9
BID FEB 2020

SCHEDULED COMPLETION
SUMMER 2021





ARTONDALE BID MAY 2020

Scheduled completion
Fall 2021






EVERGREEN
BID MAY 2020



SCHEDULED COMPLETION
FALL 2021



BOND PROMISES

- ▶  Build two new elementary schools
- ▶  Replace two existing elementary schools
- ▶  Additional classrooms at elementary level
- ▶ Emergent needs

EVALUATION OF EMERGENT NEEDS PROJECTS

- Anticipated emergent needs are concentrated in a few remaining schools
- It was identified that the cost of addressing emergent needs at two of the schools is about half the cost of qualifying for SCAP* dollars
- Qualifying for SCAP dollars would allow the district to leverage 2019 bond dollars for a larger scope of work
- Emergent needs at remaining schools will be addressed using general fund budget, until future funds are available

* SCAP = School Construction Assistance Program

HOW ARE WE ADDRESSING EMERGENT NEEDS?



Modernizations of our two oldest middle schools

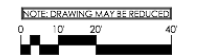
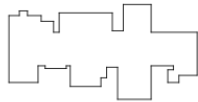
HOW DOES THIS BENEFIT THE STUDENTS, COMMUNITY AND STAFF?

- Addresses emergent needs at the two oldest middle schools
- Addresses the anticipated capacity needs at the middle school level, by adding additional classrooms
- Creates space for current and future educational programming
- Updates the exterior to better represent our communities
- Re-fresh interiors for a better learning environment

HOW ARE WE FUNDING THE MIDDLE SCHOOL MODERNIZATIONS?

- Pooling emergent need dollars
- SCAP dollars from Artondale and Evergreen
- Unexpected SCAP dollars for ES9, due to higher than expected enrollment numbers at the elementary level
- Qualifying for SCAP dollars for KOPA and KPMS
- Rapid design and permitting schedules on the four ES projects, avoided some expected inflation costs
- Available impact fees to fund new construction of additional capacity
- Cost savings from purchase of B&G Club

PREDESIGN
 NOT FOR CONSTRUCTION



Sheet Title
**FIRST FLOOR
 REFERENCE
 PLAN**



X:\2018 KOPA - Arch - PD - Jmm/2020



Project Title

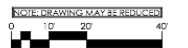
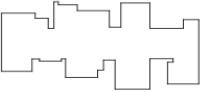
KEY PENINSULA MS

5510 Key Peninsula Highway NW
Lakebay, WA 98349

Project Numbers
2020-006

Issue & Revision Dates
MONTH 201_ SET NAME

PREDESIGN
NOT FOR CONSTRUCTION



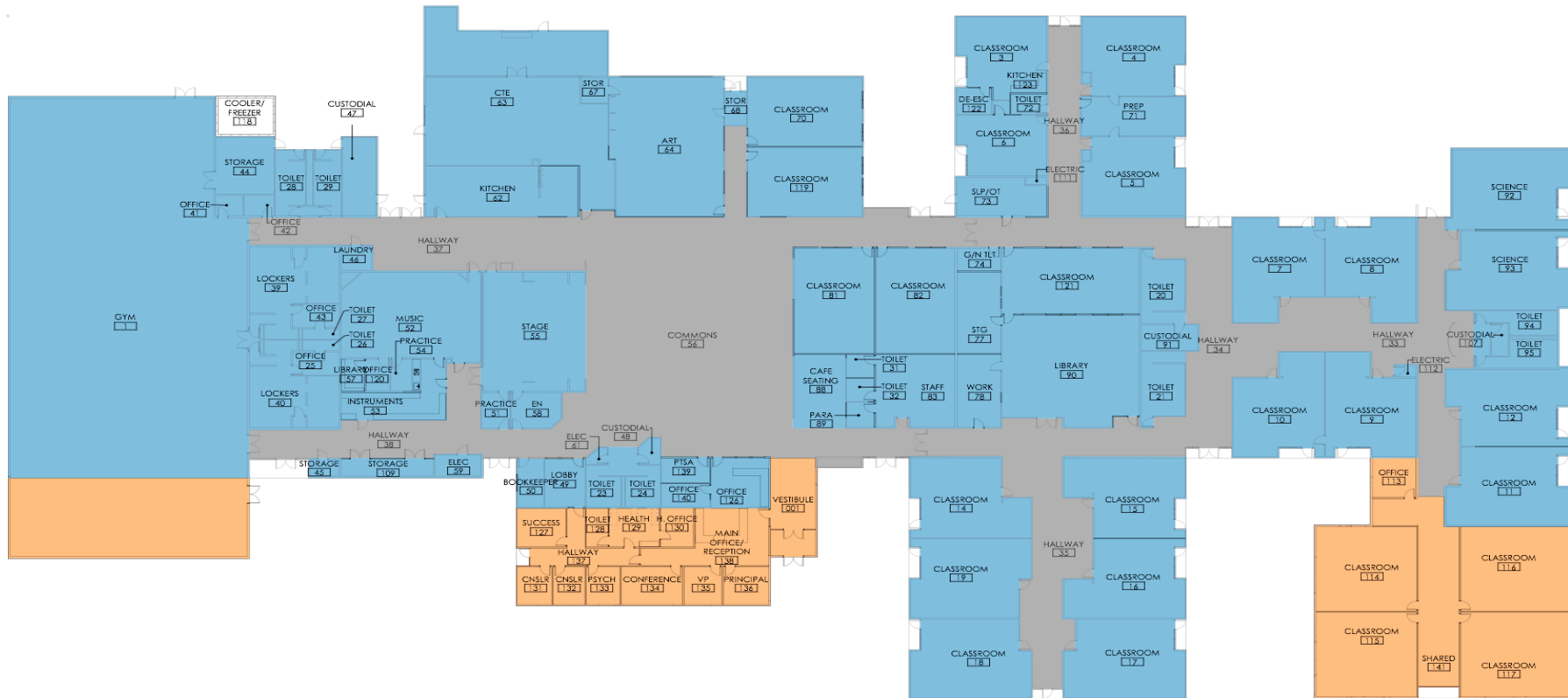
Sheet Title
**FIRST FLOOR
REFERENCE
PLAN**

Drawn By: HK Checked By: MP

Sheet Number

A2.02

Sheet Number _____ Of _____
All information constitutes the original and unaltered work of the architect and may not be used, duplicated or displayed without the written consent of the architect. Copyright © 2012 by TCF Architecture, PLLC. All rights reserved.



1 FIRST FLOOR REFERENCE PLAN
1" = 20'-0"

C:\Rev\2020\123017 C:\Rev\2020\123017\006 KPMS - Arch - PD_Jamitzar.rvt 10/27/2020 12:30:17 PM