

# 2020/2021

## The Educational Opportunity Fund Program

### High School Presentation

Academic  
Achievement

Persistence

Personal  
Development

Educational  
Attainment

Career



HIGHER EDUCATION STUDENT ASSISTANCE AUTHORITY

“New Jersey’s EOF students rank first when compared with graduation rates for low-income students in public, four-year colleges in 15 states.”

Secretary of Higher Education, New Jersey  
Department of Education



# EOF MISSION STATEMENT



## The Mission of EOF

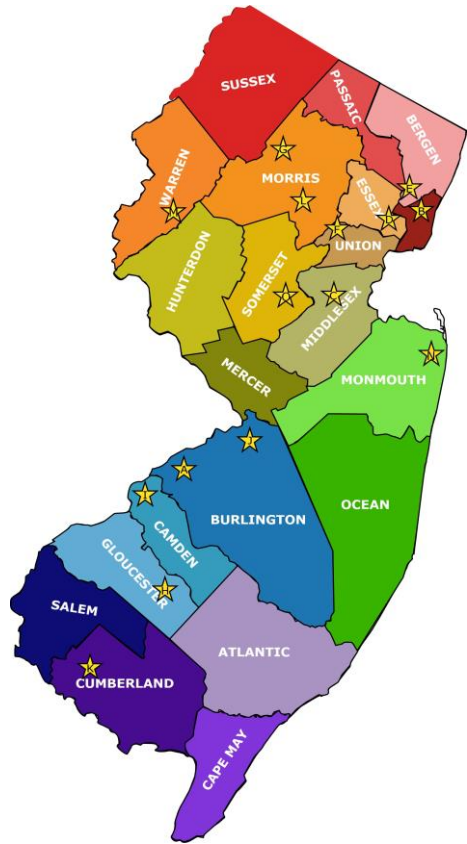
EOF contributes to the development of a college-educated public that reflect the diversity of New Jersey, by working in partnership with New Jersey colleges and universities and the K-12 educational system to provide access to higher education for students from families/communities disadvantaged by low income and the lack of access to the quality educational preparation necessary to attend college. The Fund will partner with established pre-college efforts and seek to initiate additional opportunities to identify and prepare students from college at the pre-collegiate level. At the postsecondary level, the access and opportunity provided by the Fund is not limited to simply meeting freshman (or transfer) student enrollment goals but to also focus on student success. In this vein, EOF provides support for educational initiatives, support services, and leadership development activities that assist students to improve their chances of success in specific majors and careers fields and prepares them for the changing world of work and to assume leadership in their communities and the state.

# What is EOF?

The New Jersey **Educational Opportunity Fund** provides financial assistance and support services (e.g. counseling, tutoring, and developmental course work) to students from educationally and economically disadvantaged backgrounds who attend institutions of higher education in the State of New Jersey.



# Where is the EOF program located?



**Forty-two** of the New Jersey's community colleges and public and private four-year colleges and universities participate in the **70 EOF campus programs.**

# SNAP Shot of University and Schools



# How do I Qualify?

*TO BE CONSIDERED FOR THE EDF/MAP PROGRAM, A STUDENT MUST:*

- Must be a New Jersey resident 12 consecutive months prior to receiving the award
- Must apply and be **accepted** to a participating New Jersey college or university
- Must meet the academic criteria as set by the institution of choice
- Must file a Free Application for Federal Student Aid (FAFSA) or
- Submit the NJ Alternative Financial Application





# Admission



- EOF is a campus based program. EOF student admission and support is administered at the campus level (not by the state).
- Questions regarding student eligibility and admission should be directed to each specific campus program.
- EOF is not an entitlement program. The actual number of available spaces at each participating program is limited. So apply early!

# New Jersey Alternative Financial Aid Application

The New Jersey Alternative Financial Aid Application is a confidential application that is used solely by the New Jersey Higher Education Student Assistance Authority (HESAA) to qualify students for state financial aid. It is not used for federal financial aid purposes.

## Who should complete this application?

Complete this application if you are not a United States citizen or eligible noncitizen and meet all of the following criteria:

- Attended a New Jersey high school for at least three (3) years
- Graduated from a New Jersey high school **or** received the equivalent of a high school diploma in New Jersey
- Registered for Selective Service (male students only)
- Are able to file an affidavit stating that you will file an application to legalize your immigration status **or** will file an application as soon you are eligible to do so





# Financial Eligibility Chart

- **GROSS INCOME MUST FALL WITHIN THE CRITERIA SHOWN**
- **MUST BE A NEW JERSEY RESIDENT 12 CONSECUTIVE MONTHS PRIOR TO RECEIVING THE AWARD.**



## 2020-2021 EOF Income Eligibility Scale with Asset Cap Calculation

Applicants with a Household Size of	Gross Income Not to Exceed	Asset Cap Calculation (Not to exceed*) * = Based on Household Size for ALL Students
1	\$24,980.00	\$4,996.00
2	\$32,820.00	\$6,764.00
3	\$42,660.00	\$8,532.00
4	\$51,500.00	\$10,300.00
5	\$60,340.00	\$12,068.00
6	\$69,180.00	\$13,836.00
7	\$78,020.00	\$15,604.00
8	\$86,860.00	\$17,372.00
***	Add \$8,840 for each additional family member	Add \$1,768 for each additional family member

# FINANCIAL AID

[HTTP://WWW.FAFSA.ED.GOV/](http://www.fafsa.ed.gov/)

In order to be considered **for grants, work study, and federal loans**, applicants must complete the FAFSA application.



**OCTOBER 1<sup>st</sup>** is the *first day* you can file the FAFSA.

**TIP:** File as soon as possible as each institutions deadline may be much earlier than the federal deadlines.



## How much aid will I receive?

Colleges figure out how much aid they will offer you, in part, by calculating your **Expected Family Contribution (EFC)**. The EFC is calculated using information you provide about your family's circumstances that measure your family's financial strength. Financial aid packages vary from college to college because of the cost of attendance.

**TIP:** NEW!! IRS Data Retrieval Tool. You can save time and effort by using the IRS Data Retrieval tool, which expedites your family's income tax data directly from the IRS to your online FAFSA.



The New Jersey Educational Opportunity Fund provides financial assistance and support for all qualified undergraduate students. Undergraduate grants range from \$200 annually to \$2,650 annually depending on the type of institution and financial need. These grants are renewable based upon continued eligibility.



FEDERAL STUDENT AID INFORMATION CENTER

Phone: 800-4-FED-AID (433-3243)

Monday-Friday, 8:00 AM to midnight (ET)

Saturday, 9:00 AM to 6:00 PM (ET)

need  
help?

# Summer Programs

Admission into EOF may require participation and **successful completion of the EOF Summer Program/Orientation** in order to officially matriculate into the selected College/University. **Note:** The content, length, and requirements of each campus program will vary from institution to institution. Please consult with the EOF campus program Director regarding their respective campus program requirements.



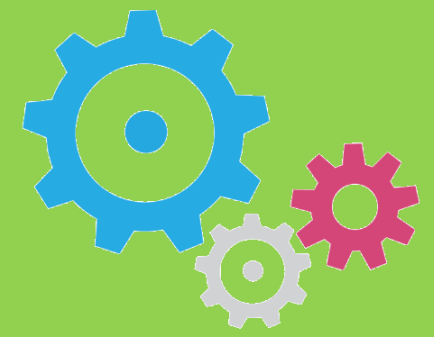
## MATRICULATION REQUIREMENTS

- Attendance and participation in class, structured study and enrichment programs.
- Completion of assignments.
- Demonstration of the appropriate attitude and behavior at all times.
- Attentiveness during class and program activities (i.e. no sleeping or playing on your computer or cell phone during class).
- Learn how to respond to constructive criticism.
- Resourcefulness: Assistance with knowing how to seek out help when needed.
- Demonstrated ability to work with peers and resolve conflicts in a civil manner.
- Time management and study skills.

## BENEFITS

- Assistance in making the adjustment to college life.
- Opportunity to meet and interact with University faculty, staff and administrators.
- Make new friends before coming to College.
- Assistance with housing (*residential programs*), board, tuition and books (*for summer*).
- Free tutorial services.
- Academic enrichment and/or the potential to earn college credits.
- Academic Assessment and Preparation – This service is conducted to help identify areas where students may need additional academic support to help ensure their success during the academic year.
- Counseling Services.
- Opportunity to complete basic skills remediation courses.
- Student Leadership Opportunities.

# Examples of Summer COMPONENTS



## ACADEMIC

- Academic Workshops & Study Groups.
- Academic Coaching
- Structured Study.
- Academic Assessment

## INTERPERSONAL

- Designed to provide students the tools to communicate effectively, self-advocate, and cope with the transition of college life and course work.
- Small/Large group sessions.

## LEADERSHIP

- Designed to introduce and prepare students to take on leadership responsibility on campus
- Learn key skills such as collaboration, teamwork, and flexibility
- Student Leadership Conference
- Weekly interactive sessions

## RESIDENTIAL

- Residence peer counselors will assist students with transition to living on campus and engaging in the residential Campus community.  
(Only applies to residential program. **This does not apply to those that do not offer a residential program** (i.e. County Colleges)

# Who does EOF Support?



- EOF recruits students from all racial/ethnic/cultural backgrounds.
- EOF students come from EVERY county across the state and is one of the most diverse programs imaginable.
- EOF is a program that focuses on Retention, Persistence, and Graduation of students.
- EOF provides access for students into college and majors that may have not had the opportunity based on academic history or financially may not have the means to afford college.

# Freshman THROUGH GRADUATION

WE'RE HERE TO HELP YOU GROW



**Assigned Counselor** to assist you in the following areas:  
*Academic, Social, Career, Financial, Personal Wellbeing.*



## Scholastic Programs

- ☐ SENIOR RETREAT
- ☐ SCIENCE AND TECHNOLOGY (STAR) PROGRAM
- ☐ STAR PRE-MEDICAL INSTITUTE
- ☐ CHI ALPHA EPSILON
- ☐ Summer Enrichment Programs (*After freshman year these program are available*)
- ✓ Pre-Law
- ✓ Pre-Med-/Pre Dental
- ✓ Math Immersion Programs



## Academic Services

- ☐ TUTORING
- ☐ SUCCESS COACHING
- ☐ KHAN ACADEMY



## Financial Services

- ☐ EOF GRADUATE GRANT
- ☐ TEXT BOOK LIBRARY LOAN SYSTEM(department funding)
- ☐ FINANCIAL SPONSORSHIPS



# EOF Awards & Recognition

EOF Central Office along with the colleges and universities in NJ annually recognize and honor all the students who are graduating with a final GPA of 3.2 and above.

For the past few years, over 1,000+ students have been recognized!







# *Graduate Funding*

- A large number of students attend college recognizing that there will be a need for them to continue their education into graduate school.
- Whether it is to earn a Master's Degree (MBA, M.S., etc.), a Doctorate (Ph.D./Ed.D.), or some form of post-graduate professional degree (i.e. Medical School (M.D./D.O., Dental School (D.D.S./D.M.D.), Law (J.D.), etc.), EOF provides a limited amount of graduate funding.
- Priority is given to those students who participated and received EOF.
- As with the undergraduate admission process, EOF graduate admission is conducted at the campus level. Space is limited. Please speak with the EOF campus program director for more information.



Questions or Interest

Contact:

[EOFSAA@gmail.com](mailto:EOFSAA@gmail.com)

## *Program*

- After EOF students graduate they have the opportunity to join EOFSAA (The Educational Opportunity Fund Statewide Alumni Association).
- This association allows for the students to network and keep in contact with many of the professional staff, friends that they have connected with over the years. The association also aids in keeping alumni tied to the program and mentoring new EOF students that are admitted each year to the various schools in NJ.

# THANK YOU,



HESAA  
HIGHER EDUCATION STUDENT ASSISTANCE AUTHORITY



HESAA, New Jersey Higher Education Student Assistance Authority