



On November 5, 2019, residents of Eastern Carver County Schools will be asked to vote on three school funding requests.

Question 1:

An operating levy increase to support student learning

- Continue the strong academic preparation of our students
- Prevent cuts to programs and services
- Maintain class sizes
- Manage growing enrollment

Question 2:

Bond funds to address growth and building maintenance needs

- Build a new elementary school
- Address deferred maintenance across the district
- Build a larger bus garage

Question 2 can pass only if Question 1 is approved.

Question 3:

Levy renewal to support school security and technology

- No-tax increase renewal of existing levy
- Support school security systems and technology for learning

If funding is not approved by voters

Without this funding there would be negative impacts, such as continued crowding, increased class sizes, deteriorating facilities, teacher layoffs, continued cuts to academic programs and services, cuts to technology equipment and support, and limited updates to school security systems.



On November 5, 2019, residents of Eastern Carver County Schools will be asked to vote on three school funding requests.

Question 1:

An operating levy increase to support student learning

- Continue the strong academic preparation of our students
- Prevent cuts to programs and services
- Maintain class sizes
- Manage growing enrollment

Question 2:

Bond funds to address growth and building maintenance needs

- Build a new elementary school
- Address deferred maintenance across the district
- Build a larger bus garage

Question 2 can pass only if Question 1 is approved.

Question 3:

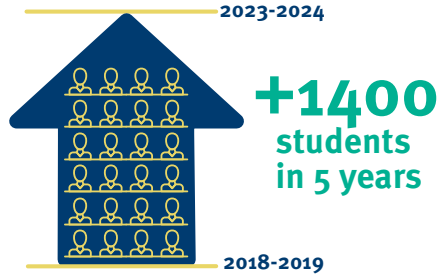
Levy renewal to support school security and technology

- No-tax increase renewal of existing levy
- Support school security systems and technology for learning

If funding is not approved by voters

Without this funding there would be negative impacts, such as continued crowding, increased class sizes, deteriorating facilities, teacher layoffs, continued cuts to academic programs and services, cuts to technology equipment and support, and limited updates to school security systems.

Fast facts:



- The district is projected to grow by 1,400 students in the next five years, with a majority at the elementary level.
- State funding has not kept pace with inflation for more than 15 years, and the district has never been fully reimbursed for required special education services.
- The median age of district schools is 34 years. Much like a home, **as school buildings age, their maintenance needs increase.**
- The current bus garage is only half the size needed to properly house and maintain district buses. The decision to bring bus services in-house, along with **a new, larger bus garage, will support better service to families, save money, and take better care of our own assets.**
- Voters approved the security and technology levy in 2013. **This levy is due to expire, and is necessary to maintain critical security and technology systems.**
- The referendum requests are based on months of study, input and research to manage growing enrollment and address aging buildings, budget pressures and academic needs.
- If voters approve the referendum requests, **the average homeowner would see a tax increase of about \$36 per month** (\$350,000 value home).

Voting information

Polls will be open 7 a.m. to 8 p.m. on November 5. Early voting begins September 20. Visit mnvotes.org or call 952-556-6107 to find your polling location.

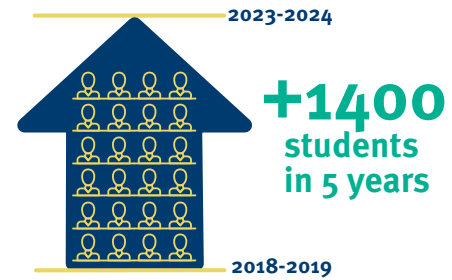
Learn more

CALL 952-556-6107
EMAIL Vote2019@district112.org
VISIT www.district112.org/vote2019



Prepared and paid for by Eastern Carver County Schools.
This publication is not circulated on behalf of any candidate or ballot question.

Fast facts:



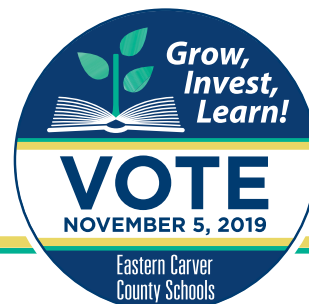
- The district is projected to grow by 1,400 students in the next five years, with a majority at the elementary level.
- State funding has not kept pace with inflation for more than 15 years, and the district has never been fully reimbursed for required special education services.
- The median age of district schools is 34 years. Much like a home, **as school buildings age, their maintenance needs increase.**
- The current bus garage is only half the size needed to properly house and maintain district buses. The decision to bring bus services in-house, along with **a new, larger bus garage, will support better service to families, save money, and take better care of our own assets.**
- Voters approved the security and technology levy in 2013. **This levy is due to expire, and is necessary to maintain critical security and technology systems.**
- The referendum requests are based on months of study, input and research to manage growing enrollment and address aging buildings, budget pressures and academic needs.
- If voters approve the referendum requests, **the average homeowner would see a tax increase of about \$36 per month** (\$350,000 value home).

Voting information

Polls will be open 7 a.m. to 8 p.m. on November 5. Early voting begins September 20. Visit mnvotes.org or call 952-556-6107 to find your polling location.

Learn more

CALL 952-556-6107
EMAIL Vote2019@district112.org
VISIT www.district112.org/vote2019



Prepared and paid for by Eastern Carver County Schools.
This publication is not circulated on behalf of any candidate or ballot question.