



OUR STUDENTS. OUR SCHOOLS. OUR COMMUNITY.

On November 5, 2019, residents of Eastern Carver County Schools will be asked to vote on three school funding requests.

The referendum requests, approved unanimously by the School Board, are based on months of study, input and research to manage growing enrollment and address aging buildings, budget pressures and academic needs.

Q1: operating levy increase to support student learning



Q2: bond funds to address our growth and building maintenance needs



Q3: levy renewal to support school security and technology



BALLOT QUESTIONS

Question 1:

An operating levy increase to **continue the strong academic preparation of our students**, prevent cuts to programs and services, maintain class sizes and manage growing enrollment. *Question 1 must be approved in order for Question 2 to pass.*

Question 2:

A bond request to build a **new elementary school** on district-owned land in Chaska, **address deferred maintenance** and building repair projects across the district, and build a larger **bus garage**. *Question 2 can pass only if Question 1 is approved.*

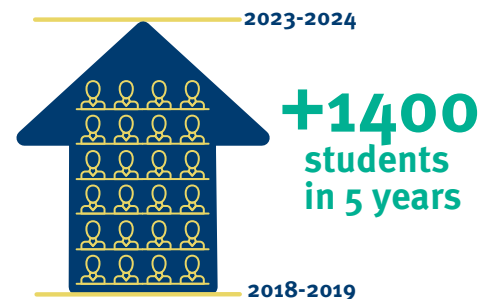
Question 3:

A **no-tax increase renewal** of our existing security and technology levy to **support school security systems, technology for students and staff**, and related professional development and support.



What you need to know

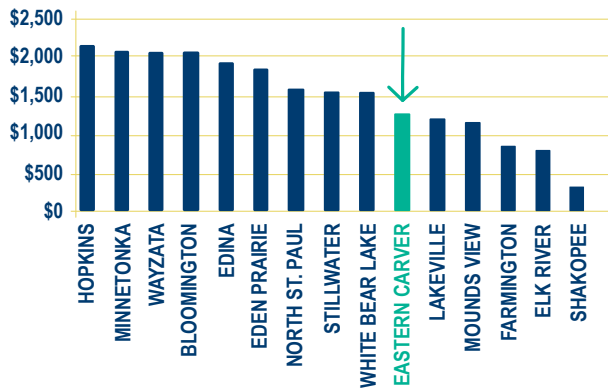
- The district is projected to grow by **1,400 students in the next five years, with a majority at the elementary level.** This equates to adding one classroom of students per month. The district is already at capacity, or close to it, in most elementary schools. Adequate funding and classroom space helps maintain class sizes to support personalized learning for all students.



- State funding has not kept pace with inflation for more than 15 years.** If it had, we would have received more than \$6 million in additional funding last year. That gap is projected to get even larger. Critical special education programs cost the district millions more than it receives each year from the state, putting additional pressure on the district's operating budget.
- The median age of district schools is 34 years. Much like a home, as school buildings age, their maintenance needs increase. **Addressing deferred maintenance - such as roofs, parking lots and heating/ventilation equipment - sustains optimal student learning environments and protects the community's investment in its schools.**
- The current bus garage is only half the size needed to properly house and maintain district buses. A larger garage would address space and maintenance needs while making bus service more reliable for students. Coupled with the district decision to bring bus services in-house, **the new bus garage will support better service to families, save money, and take better care of our own assets.**
- Funding from **the district's security and technology levy has supported secure school entrances, technology infrastructure, and learning devices for both students and staff.** This levy is due to expire, which would eliminate funding used to maintain these security and technology systems.

EASTERN CARVER COUNTY SCHOOLS' OPERATING LEVY IS LOWER THAN MOST NEIGHBORING DISTRICTS.

Operating Levy Per Student (2019-2020)



Figures do not include the reduction for L.O.R. as passed by 2019 Minnesota Legislature.

Our community supports our schools

92% of residents & 98% of parents rate the quality of our education as **excellent or good!**

92% agree they receive a **good value** from their **investment** in our schools. ☆



95% rate our teachers as **excellent or good!**

*Results from 2018-19 random sample community phone surveys conducted by an independent research firm.

If funding is not approved by voters

Without this funding there would be negative impacts, such as continued crowding, increased class sizes, deteriorating facilities, teacher layoffs, continued cuts to academic programs and services, cuts to technology equipment and support, and limited updates to school security systems.

Financial accountability



The district has been awarded eight consecutive awards for excellent comprehensive financial reporting by the Association of School Business Officials (ASBO). The district also received the Meritorious Budget Award from ASBO for the second year in a row.

Tax impact

If voters approve the referendum requests, the average homeowner would see a tax increase of about \$36 per month.

REQUEST	AMOUNT	MONTHLY TAX IMPACT*
Q1: Operating levy increase	\$550 per student = approximately \$5.6 million per year	\$22
Q2: Bond funds	\$111.7 million (new elementary school = \$35.9M; districtwide deferred maintenance = \$62.1M; bus garage = \$13.7M.)	\$14
Q3: Security and technology levy renewal	Approximately \$4.4M per year	\$0
ESTIMATED TAX IMPACT*		\$36

* Based on average home value of \$350,000



Prepared and paid for by Eastern Carver County Schools.
This publication is not circulated on behalf of any candidate or ballot question.

Voting information

Polls will be open 7 a.m. to 8 p.m. on November 5. Polling locations may be different than where you typically vote, so visit mnvotes.org or call the number below to find your polling location. Early voting begins September 20 and can be done in-person during business hours at the District Office, 11 Peavey Road, Chaska.

Polling Locations

Please note: some of the district combined polling locations have changed from past elections.

Residents living in Carver
Carver City Hall
316 Broadway, Carver

Residents living in Chanhassen
Chanhassen Recreation Center
2310 Coulter Blvd., Chanhassen

Residents living in Chaska
Chaska Community Center
1661 Park Ridge Dr., Chaska

Residents living in Victoria
Victoria Recreation Center
8475 Kochia Ln., Victoria

Learn more

CALL 952-556-6107

EMAIL Vote2019@district112.org

VISIT www.district112.org/vote2019

VOTE
NOVEMBER 5, 2019