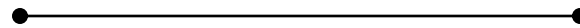


Virginia School Bus Driver Training

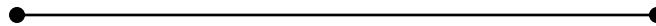


UNIT H TRANSIT BUSES

Type D Buses



Wheelbase of a transit



Wheelbase of a conventional

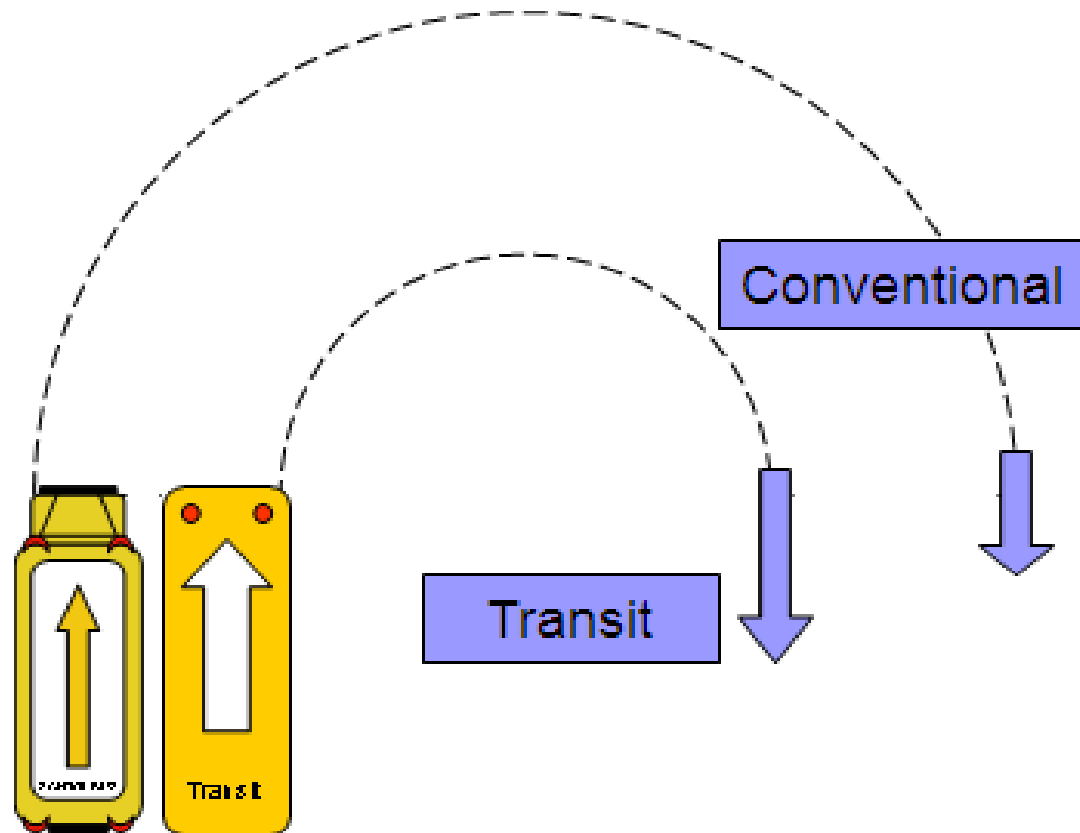
Visibility



Visibility



Dimensions and Turning Radius



**The shorter the wheel base the
tighter the turning radius**

Mirror Adjustment

Proper adjustment and use of all mirrors is vital to the safe operation of the school bus. All mirrors should be checked for proper adjustment before operating the vehicle.

(2) Outside flat rearview mirrors



(3) Convex Mirrors



(4) Crossover mirror

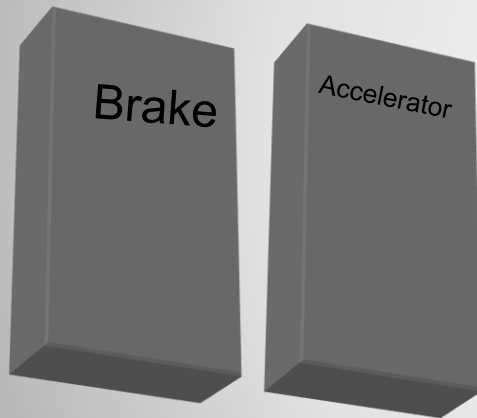
Steering Position



Grasp steering wheel with both hands thumbs up. Left hand should be approximately at **8** and the right hand at **4** and or **9** and **3** o'clock positions.

Stopping

Position and action of the accelerator and brake pedals (the two are very close together). They may be similar in shape and size.



The driver should place the entire foot gently on the brake pedal and then push softly with the toe or ball of the foot on the top of the pedal.

URNS ON TRANSIT BUSES

RIGHT TURNS – Most right turns will begin when the driver can see down the curb line (looking out the entrance doorway) of the street onto which the bus will be turning.

LEFT TURNS – Left turns begin when the front of the bus is in the middle of the intersection.

Backing

Transit buses afford very little visibility through windows and mirrors from the driver's seat of what is located behind the bus.





Backing a transit bus is not recommended.

LANE POSITIONING

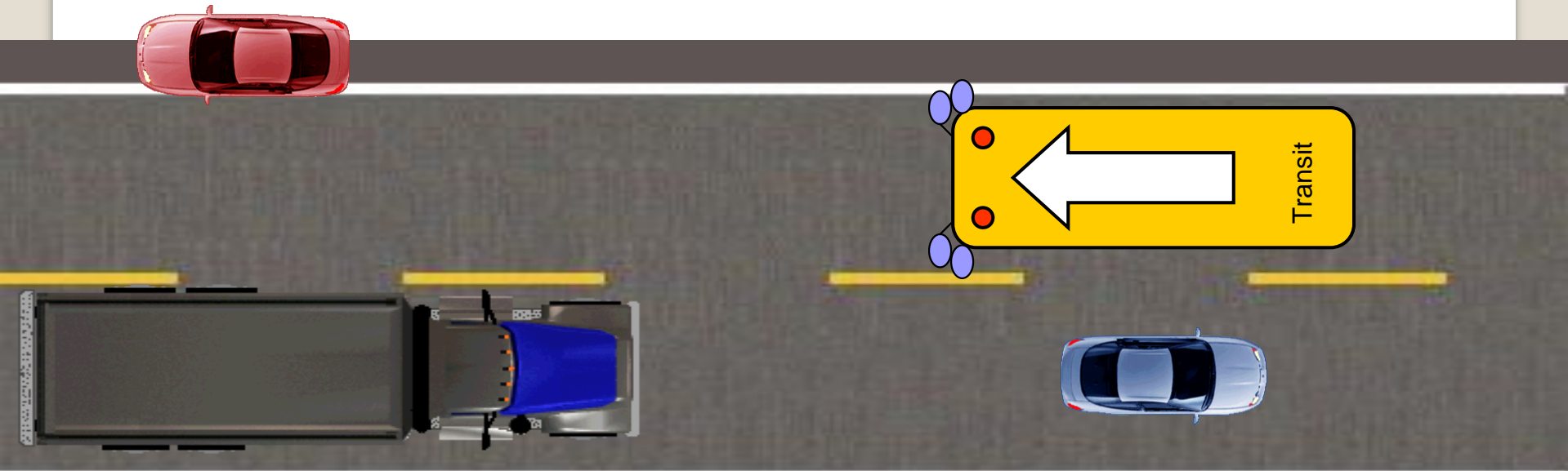
Poor lane positioning can result in:

- Improper turning
- Overcorrection due from lane to road departure
- Possible contact with another vehicle



LANE POSITIONING

Use mirrors effectively and position bus in center of lane.



The driver must be observant of conditions down the road.

SPACE CUSHION

When stopped

Maintaining a space cushion when stopped will:

Prevent striking a vehicle in front (if hit from behind)

Prevent being hit if vehicle in front rolls back

Afford enough room to proceed around a disabled vehicle to the front

When moving

Leave space to the LEFT, RIGHT and FRONT of vehicle

Leave two 45 degree angle escape routes to the sides

Important Observations

Be Aware

- Position of accelerator and brake pedal
- Roadway depressions
- Underpass clearance height
- Bridge and overpass signs
- Objects close to roadway
- Cool down time on turbo engines
- Avoid drifting

**Click on the
Transit Bus Link**

Transit Buses