



UPREP AT A GLANCE

University Prep was founded in 1976 as an independent, coeducational, nonsectarian day school for grades 6–12.

MISSION STATEMENT

University Prep is committed to developing each student's potential to become an intellectually courageous, socially responsible citizen of the world.

ENROLLMENT

602 Students

- Grades 9–12: **343** students
- Grades 6–8: **265** students
- Average of **15** students per Upper School academic class
- Upper School student/faculty ratio: **9/1**

FINANCIAL AID

- **\$3.2 million** in financial aid was awarded for the 2020–2021 school year.
- **18%** of students receive significant financial aid.

COVID-19 STATEMENT

UPrep was able to maintain its high-quality educational program during COVID-19. Despite a quick pivot to online learning last March, our academic enterprise continued with the same high standard for which we are known. All classes were synchronous and graded on a 100-point scale. The 2020–2021 school year will start online with live synchronous classes. In early October, if the guidance from state health officials allows, UPrep will switch to a hybrid schedule.

CURRICULUM

- UPrep's curriculum is demanding, and there are no designated honors or AP classes.
- Our rotating block schedule has six classes, which meet two out of every three days.
- Two three-week intensive academic experiences follow each semester.
- All classes are college preparatory.
- Students are expected to carry a minimum of five classes each semester.
- UPrep is a member of Global Online Academy, a consortium of the world's leading independent schools that offer intellectually rigorous online classes that are designed, developed, and taught by teachers from member schools.

ACCREDITATION

- NWAIS

MEMBER SCHOOL

- NAIS, NACAC, PNACAC

NOTABLE FEATURES

- On average, **75%** of seniors are designated as Washington Scholars (graduating in the top 10% of all Washington State students, based on test scores and grade point average).
- On average, **15%** of seniors are National Merit Finalists, Commended Scholars, or National Hispanic Scholars.
- We currently have **41** Rainier Scholars and **60** Rainier Scholar alumni.
- **35%** students of color
- **31%** faculty/staff of color
- The classes of 2016–2020 are attending **118** different colleges in **30** different states and **three** foreign countries.

SPECIAL NOTE: COMPUTING GRADE POINT AVERAGE AND CLASS RANK

- All classes are taught at the honors level.
- Grading in academic course work is rigorous.
- University Prep does not weight grades, report GPAs on transcripts, compute class rank, or offer AP classes.

GRADUATION REQUIREMENTS

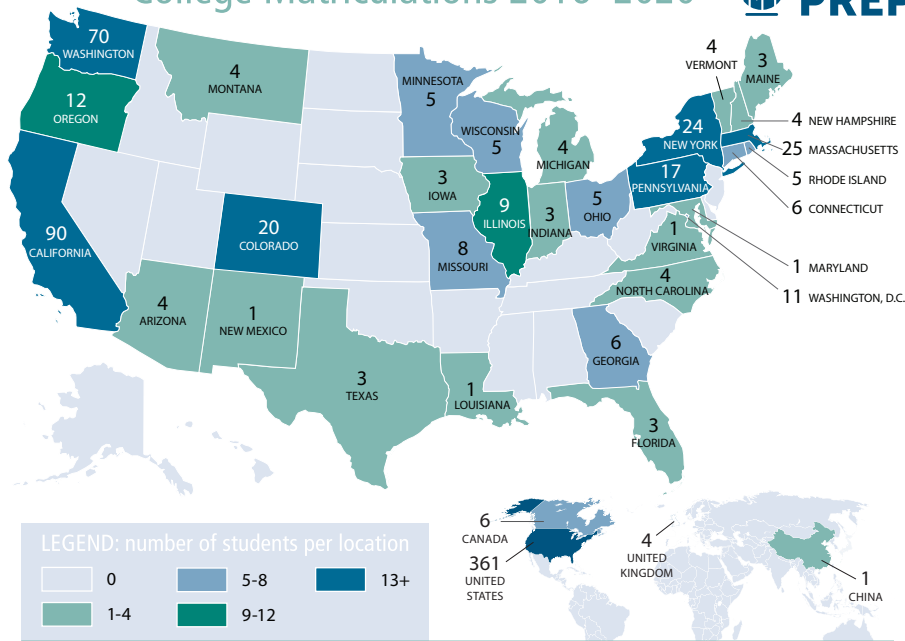
Students must complete a minimum of **225** credits during grades 9 through 12, including the following departmental requirements:

- English, four years
- History, three-and-a-half years, including two years of World History, one year of U.S. History and Civics
- Mathematics, three years, including Algebra I, Algebra II, Geometry, and Statistics
- Science, three years, including one year each of Biology, Chemistry, and Physics
- Language, three years of one language (choice of Chinese, French, and Spanish), or two years each of two languages
- Fine Arts (four classes), Physical Education (four semesters, which includes health), LaunchPad, a self-designed experiential educational project (one class), and electives

ADVANCED PLACEMENT RECORD

Although University Prep does not offer AP classes, students who choose to study for the examinations on their own perform well. For the class of 2020, **30%** chose to take one or more AP exams; **85%** of those students scored a 4 or higher.

College Matriculations 2016–2020



GPA & TESTING DISTRIBUTION*

Class of 2021

Class size	84
Mean GPA	3.62
Middle 50% GPAs	3.44-3.90

MEAN MIDDLE 50%

ACT Composite

2019–2021	29	26-33
English	31	27-35
Math	28	26-31
Reading	30	26-35
Science	28	24-32

MEAN MIDDLE 50%

SAT Composite

2019–2021	1330	1230-1440
Evidence Based		
Reading/Writing	670	620-690
Math	660	610-660

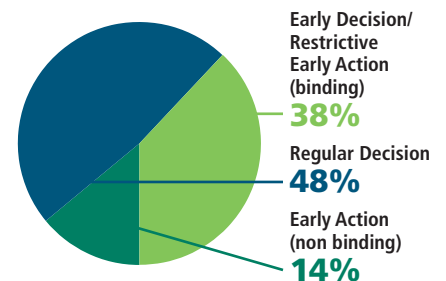
* Due to COVID-19, 60% of the senior class has not been able to take the SAT or ACT. Due to the advice of the College Counseling Office, the vast majority of our students wait until the spring of their junior year to take standardized tests. All test centers in King County, where Seattle is located, have remained closed since March. As a result of COVID-19's impact on standardized testing this year, we are reporting test averages for the classes of 2019–2021.

COLLEGE PLACEMENT RECORD 2016–2020

One hundred percent of the graduates from the classes of 2016–2020 were accepted to four year colleges. They are attending **118** different colleges and universities in **32** states and **three** foreign countries.

- American University (2)
- Arizona State University (2)
- Bard College
- Barnard College
- Bates College
- Bentley University
- Berklee College of Music
- Boston College (3)
- Boston University
- Bowdoin College (2)
- Brown University (5)
- Bryn Mawr College
- Butler University (2)
- Cal Poly, San Luis Obispo (6)
- Carleton College (3)
- Case Western Reserve University (3)
- Chapman University (8)
- Claremont McKenna College (2)
- Colgate University
- College of Wooster
- Colorado College (7)
- Columbia University (3)
- Cornell University (2)
- Dartmouth College (4)
- Dickinson College
- Duke University
- Elon University (2)
- Emory University (3)
- Franklin and Marshall College
- George Washington University (6)
- Georgetown University (3)
- Georgia Institute of Technology
- Gonzaga University (6)
- Grinnell College (3)
- Haverford College (2)
- Hillsdale College
- Indiana University, Bloomington
- Johns Hopkins University
- Kenyon College
- Lafayette College
- Lake Forest College
- Lawrence University (2)
- Lehigh University (3)
- Loyola Marymount University (5)
- Macalester College
- Marquette University
- Massachusetts Maritime Academy
- Middlebury College (4)
- Montana State University (3)
- Morehouse College
- New York University (4)
- New York University, Shanghai
- Northeastern University (7)
- Northwestern University (6)
- Occidental College (8)
- Oregon State University
- Oxford College of Emory University
- Parsons School of Design (2)
- Pitzer College (4)
- Pomona College (2)
- Pratt Institute
- Queen's University
- Quest University Canada
- Reed College (2)
- Rensselaer Polytechnic Institute
- Rice University
- Santa Clara University (19)
- Scripps College (5)
- Seattle University (5)
- Skidmore College (2)
- Southern Methodist University (2)
- Southern Oregon University
- Springfield College
- St. Olaf College
- Stanford University
- Swarthmore College (2)
- Syracuse University (3)
- Tufts University (3)
- Tulane University
- University of Arizona (2)
- University of British Columbia (4)
- University of California, Berkeley (3)
- University of California, Los Angeles (4)
- University of California, San Diego
- University of Chicago (2)
- University of Colorado, Boulder (6)
- University of Denver (7)
- University of Edinburgh
- University of Florida
- University of La Verne
- University of Miami (2)
- University of Michigan (3)
- University of Montana
- University of New Mexico
- University of Oregon (7)
- University of Pennsylvania (4)
- University of Puget Sound (4)
- University of Redlands (3)
- University of Rochester (2)
- University of San Diego (2)
- University of Southern California (16)
- University of St Andrews (3)
- University of Virginia
- University of Washington, Bothell (6)
- University of Washington, Seattle (28)
- University of Wisconsin, Madison (2)
- Villanova University (2)
- Wake Forest University
- Washington State University (3)
- Washington University, St Louis (8)
- Wellesley College (5)
- Wesleyan University (3)
- Western Washington University (7)
- Wheaton College
- Whitman College (11)
- Willamette University
- Williams College
- Yale University (3)

MATRICULATION BY APPLICATION TYPE



COLLEGE COUNSELING OFFICE

Kelly Herrington,
Director
kherrington@universityprep.org
206.832.1226

Britten Nelson,
Associate Director
bnelson@universityprep.org
206.832.1111

Wendy Robbins,
Assistant
wrobbins@universityprep.org
206.832.1127