

Prepare for the PSAT/NMSQT®

PSAT/NMSQT®

CollegeBoard / NATIONAL MERIT
SCHOLARSHIP CORPORATION



Contents

-
- What Is the PSAT/NMSQT?
 - When Is the 2020 PSAT/NMSQT?
 - Skills Tested on the PSAT/NMSQT
 - How to Prepare for the PSAT/NMSQT
 - Sample PSAT/NMSQT Questions
 - Resources

What Is the PSAT/NMSQT?



Some Key Facts

3.8+ million

students take the PSAT/NMSQT each year to get feedback on their skills and practice for the SAT.

The PSAT/NMSQT assesses the same knowledge and skills as the SAT, providing a check-in on college readiness before students take the SAT®.

Scores for the SAT Suite of Assessments (SAT, PSAT/NMSQT, PSAT™ 10, and PSAT™ 8/9) are reported on a common vertical scale, allowing **educators and students to measure progress**

- Propels students toward **college** and **career readiness**
- Is cosponsored by the College Board and National Merit Scholarship Corporation
- Serves as an entry point to over \$300 million in **scholarship dollars**

What to know about the PSAT/NMSQT



Test length: 2 hours 45 minutes



No points deducted for incorrect answers or unanswered questions, *also known as “rights-only scoring”*



Personalized SAT practice through Khan Academy[®] with students' own PSAT/NMSQT scores

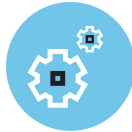


Scale ranges for the scores are 320–1520 for the total score

Benefits of the PSAT/NMSQT



Personalized SAT practice on Khan Academy based on students' PSAT/NMSQT answers



Aligned to the SAT



Increased access to additional scholarship providers



Online college and career planning tools



Admission and financial aid information from colleges



Majors and career exploration with College Board and Roadtrip Nation

PSAT/NMSQT 2020 Test Date

Saturday
Test Date

OCTOBER
17

Skills Tested on the PSAT/NMSQT



Skills Tested



Reading Test



Writing and Language Test



Math Test

- Each test assesses the academic skills that students have developed over the years, primarily through their coursework.
- These skills are considered essential for success in high school, college, and career.

Reading Test



-
- 5 passages
 - 47 passage-based questions;
60 minutes

Quick Facts

- All questions are multiple choice and based on passages.
- Some passages are paired with other passages or informational graphics such as graphs and tables.
- No mathematical computation is required.
- Topic-specific prior knowledge is never tested.

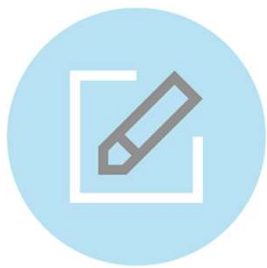
Reading Test

What to Expect

In the Reading Test, students will encounter questions like those asked in a lively, thoughtful, evidence-based discussion.



Writing and Language Test

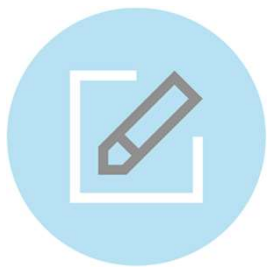


-
- 4 passages
 - 44 passage-based questions; 35 minutes

Quick Facts

- All questions are multiple choice and based on passages.
- Some passages are paired with informational graphics such as graphs and tables.
- No mathematical computation is required.
- Topic-specific prior knowledge is never tested.

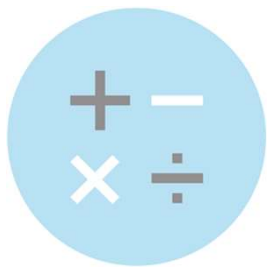
Writing and Language Test



What to Expect

The Writing and Language Test puts students in the active role of an editor who is improving a written passage. Most questions ask students to decide which, if any, of the alternatives to an underlined part of a passage most improves it.

Math Test

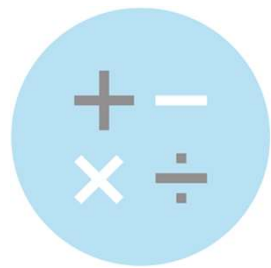


-
- 2 test sections; 70 minutes
 - 48 questions
(40 multiple choice, 8 student-produced responses)

Quick Facts

- Most math questions will be multiple choice, but some will be student-produced responses.
- The Math Test is divided into two portions:
Math Test – Calculator and Math Test – No Calculator.
- Some parts of the test will present students with a scenario and then ask several questions about it.

Math Test



What to Expect

The Math Test focuses on the math that matters most for college and career readiness. To succeed on the Math Test, students will need to demonstrate mathematical practices, such as problem solving and using appropriate tools strategically.

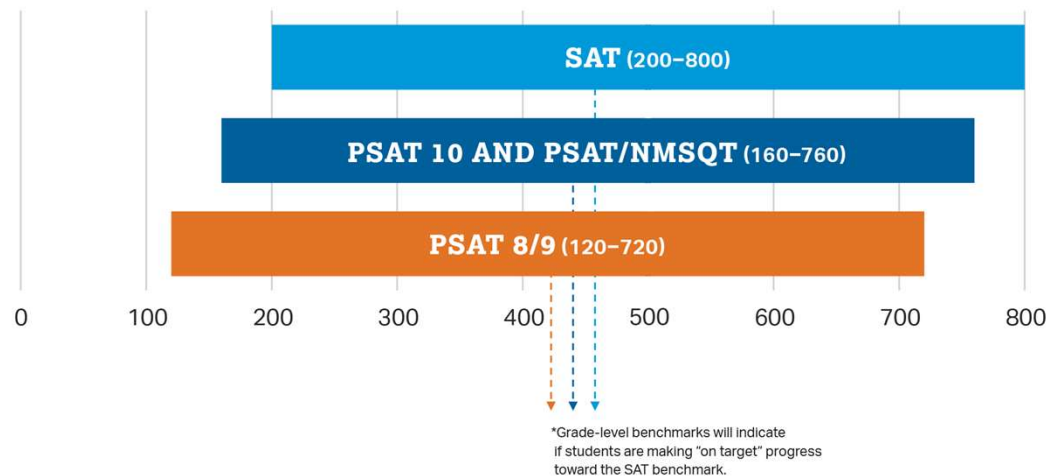
How Does the PSAT/NMSQT Connect to the SAT?

Content and Domain Alignment

All tests in the SAT Suite of Assessments (SAT, PSAT/NMSQT, PSAT 10, and PSAT 8/9) are aligned to the same research backbone and focus on the same domain of knowledge and skills.

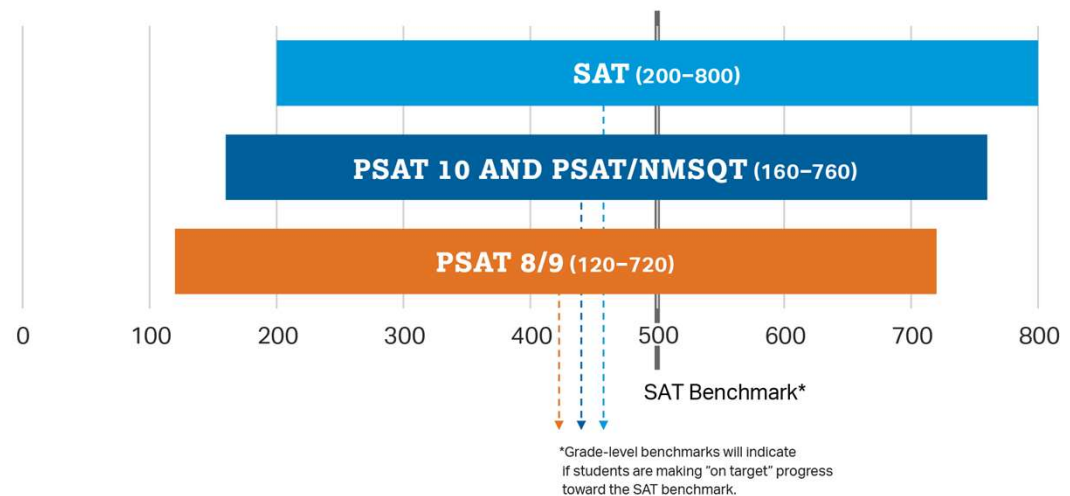
Scoring

All tests in the SAT Suite of Assessments are on a common score scale that provides consistent feedback, enabling teachers to adjust instruction to better support students who are ahead or behind.



How Does the PSAT/NMSQT Connect to the SAT?

That means the score students get on the PSAT/NMSQT is the same score they would have gotten on the SAT if they'd taken it on the same day.



How Does the PSAT/NMSQT Compare to the SAT?

PSAT/NMSQT

SAT

2 hours
45 minutes



Time

3 hours
50 minutes

None



Essay

Optional


160—760



Section Score
Range

200—800

How to Prepare for the PSAT/NMSQT

A blue-tinted photograph of three students walking past a brick wall. The student in the center is a young man with dark hair, wearing a plaid shirt and carrying a backpack. He is looking towards the right. To his left is another student, partially visible, also with a backpack. To his right is a young woman with long hair, wearing a light-colored shirt and carrying a backpack, looking towards the right. The background is a brick wall.

Know How the PSAT/NMSQT Is Scored

Rights-Only Scoring

- 1 point for each correct answer
- No points deducted for incorrect answers or unanswered questions

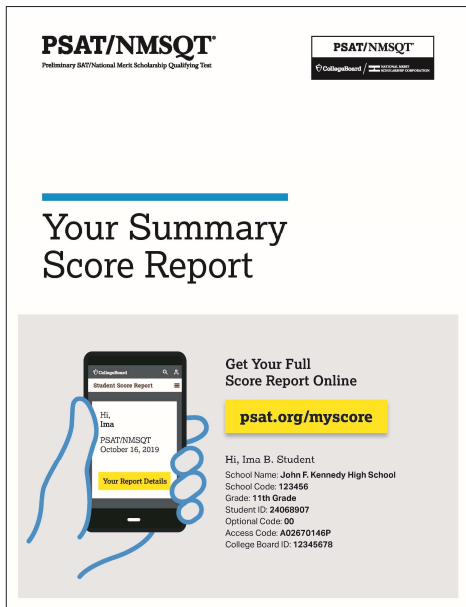
Math Student-Produced Responses

- You can enter answers as (reduced) fractions or decimals.
- If rounding a decimal, make sure to enter as many characters as are allowed.

Scale

- 160–760 for each test section
- 320–1520 for the total score

Personalized Skills Information



The PSAT/NMSQT Score Report

- Contains information **to help students improve academic skills.**
- **Lists skills** that students have the best chance of improving with additional work.
- Connects to **personalized practice** recommendations on **Khan Academy.**

Preparation Starts in School

Read

Continuous reading improves vocabulary and develops essential skills.

Take Challenging Courses

This will help students to develop and strengthen their critical thinking skills.

Sample PSAT/NMSQT Questions

A young man with dark, wavy hair is sitting at a desk, looking directly at the camera. He is wearing a light-colored, short-sleeved button-down shirt over a dark t-shirt. In front of him is a laptop. The background shows a bedroom setting with a bed covered in a striped blanket on the left and a desk with various items on the right. The entire image has a blue tint.

Reading Test

Passage-Based Questions



Passage Excerpt:

[. . .] The coming decades will likely see more intense clustering of jobs, innovation, and productivity in a smaller number of bigger cities and city-regions. Some regions could end up bloated beyond the capacity of their infrastructure, while others struggle, their promise stymied by inadequate human or other resources.

*Adapted from Richard Florida, The Great Reset.
© 2010 by Richard Florida.*

As used in line 2, “intense” most nearly means

- (A) emotional.
- (B) concentrated.
- (C) brilliant.
- (D) determined.

Reading Test

Passage-Based Questions



Passage Excerpt:

[. . .] The coming decades will likely see more intense clustering of jobs, innovation, and productivity in a smaller number of bigger cities and city-regions. Some regions could end up bloated beyond the capacity of their infrastructure, while others struggle, their promise stymied by inadequate human or other resources.

*Adapted from Richard Florida, The Great Reset.
© 2010 by Richard Florida.*

As used in line 2, “intense” most nearly means

- (A) emotional.
- (B) concentrated.**
- (C) brilliant.
- (D) determined.

Reading Test

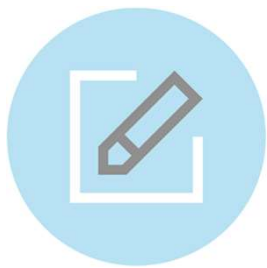
Passage-Based Questions

This question asks students to determine word meaning within a social science context. While students may frequently use the word “intense” to describe personalities or emotions, the context of this sentence requires students to recognize that “intense” can also mean “concentrated.” Choice B is the best answer because the context makes clear that the clustering of jobs, innovation, and productivity will be more concentrated in, or more densely packed into, “a smaller number of bigger cities and city-regions.” In these ways, the question draws students back to the text rather than rewarding only isolated vocabulary knowledge.



Writing and Language Test

Passage-Based Questions



Passage Excerpt:

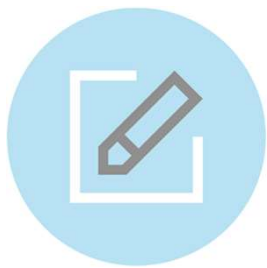
[. . .] As Kingman developed as a painter, his works were often compared to paintings by Chinese landscape artists dating back to CE 960, a time when a strong tradition of landscape painting emerged in Chinese art. Kingman, however, 5 vacated from that tradition in a number of ways, most notably in that he chose to focus not on natural landscapes, such as mountains and rivers, but on cities. [. . .]

5

- (A) NO CHANGE
- (B) evacuated
- (C) departed
- (D) retired

Writing and Language Test

Passage-Based Questions



Passage Excerpt:

[. . .] As Kingman developed as a painter, his works were often compared to paintings by Chinese landscape artists dating back to CE 960, a time when a strong tradition of landscape painting emerged in Chinese art. Kingman, however, 5 vacated from that tradition in a number of ways, most notably in that he chose to focus not on natural landscapes, such as mountains and rivers, but on cities. [. . .]

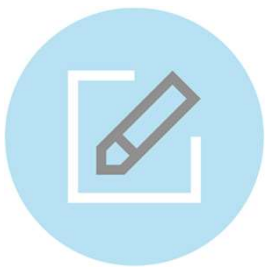
5

- (A) NO CHANGE
- (B) evacuated
- (C) departed**
- (D) retired

Writing and Language Test

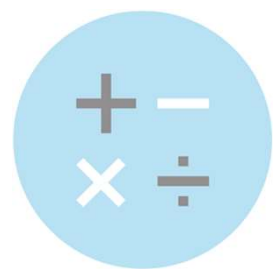
Passage-Based Questions

This question asks students to determine which word makes the most sense in the context of a sentence. “**Departed**” is the most contextually appropriate way to indicate that Kingman had deviated from the tradition of Chinese landscape painting in a number of ways. In this sort of question, students must demonstrate not only facility with language in general but also skill in using language in particular contexts to convey meaning clearly and precisely.



Math Test

Calculator: Permitted

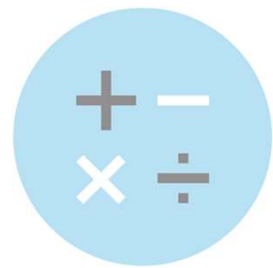


Aaron is staying at a hotel that charges \$99.95 per night plus tax for a room. A tax of 8% is applied to the room rate, and an additional one-time untaxed fee of \$5.00 is charged by the hotel. Which of the following represents Aaron's total charge, in dollars, for staying x nights?

- (A) $(99.95 + 0.08x) + 5$
- (B) $1.08(99.95x) + 5$
- (C) $1.08(99.95x + 5)$
- (D) $1.08(99.95 + 5)x$

Math Test

Calculator: Permitted



Aaron is staying at a hotel that charges \$99.95 per night plus tax for a room. A tax of 8% is applied to the room rate, and an additional one-time untaxed fee of \$5.00 is charged by the hotel. Which of the following represents Aaron's total charge, in dollars, for staying x nights?

(A) $(99.95 + 0.08x) + 5$

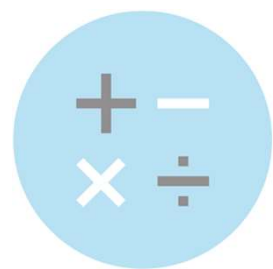
(B) $1.08(99.95x) + 5$

(C) $1.08(99.95x + 5)$

(D) $1.08(99.95 + 5)x$

Math Test

Calculator: Permitted



This problem asks students to interpret a situation and formulate a linear expression that represents the situation mathematically. The construction of mathematical models that represent real-world scenarios is a critical skill.

The total charge is the room rate, the 8% tax on the room rate, and a fixed fee. If Aaron stayed x nights, then the total charge is $(99.95x + 0.08 \times 99.95x) + 5$, which can be rewritten as $1.08(99.95x) + 5$.

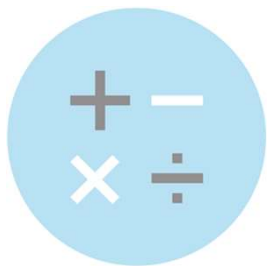
Math Test

Calculator: Not Permitted

In this equation, what is the value of k ?

$$\frac{5(k+2)-7}{6} = \frac{13-(4-k)}{9}$$

- (A) $\frac{9}{17}$
- (B) $\frac{9}{13}$
- (C) $\frac{33}{17}$
- (D) $\frac{33}{13}$



Math Test

Calculator: Not Permitted



In this equation, what is the value of k ?

$$\frac{5(k+2)-7}{6} = \frac{13-(4-k)}{9}$$

In this problem, students will demonstrate their fluency in solving equations in one variable.

Choice B is correct. Simplifying the numerators yields

$$\frac{5k+3}{6} = \frac{9+k}{9}$$

and cross-multiplication gives $45k + 27 = 54 + 6k$.

Solving for k yields $k = \frac{9}{13}$

(A) $\frac{9}{17}$

(B) $\frac{9}{13}$

(C) $\frac{33}{17}$

(D) $\frac{33}{13}$

Math Section

Student-Produced Responses



Sample Grids

Instead of choosing a correct answer from a list of options, students will need to solve problems and enter their answers in the grids provided on the answer sheet.

Answer: $\frac{7}{12}$

Write answer in boxes. →

7	/	1	2
•	•	•	•
0	0	0	0
1	1	1	1
2	2	2	2
3	3	3	3
4	4	4	4
5	5	5	5
6	6	6	6
7	7	7	7
8	8	8	8
9	9	9	9

Grid in result. →

← Fraction line

Answer: 2.5

2	.	5
•	•	•
0	0	0
1	1	1
2	2	2
3	3	3
4	4	4
5	5	5
6	6	6
7	7	7
8	8	8
9	9	9

← Decimal point

Acceptable ways to grid $\frac{2}{3}$ are:

2	/	3
•	•	•
0	0	0
1	1	1
2	2	2
3	3	3
4	4	4
5	5	5
6	6	6
7	7	7
8	8	8
9	9	9

.	2	3
•	•	•
0	0	0
1	1	1
2	2	2
3	3	3
4	4	4
5	5	5
6	6	6
7	7	7
8	8	8
9	9	9

.	6	6	6
•	•	•	•
0	0	0	0
1	1	1	1
2	2	2	2
3	3	3	3
4	4	4	4
5	5	5	5
6	6	6	6
7	7	7	7
8	8	8	8
9	9	9	9

Answer: 201— either position is correct

2	0	1
•	•	•
0	0	0
1	1	1
2	2	2
3	3	3
4	4	4
5	5	5
6	6	6
7	7	7
8	8	8
9	9	9

2	0	1
•	•	•
0	0	0
1	1	1
2	2	2
3	3	3
4	4	4
5	5	5
6	6	6
7	7	7
8	8	8
9	9	9

NOTE: You may start your answers in any column, space permitting. Columns you don't need to use should be left blank.

Math Section

Math Test – Calculator



Students: Know Your Calculator

- A scientific or graphing calculator is recommended.
- Students should bring a familiar calculator. Test day is not the time to figure out how to use a new calculator.

Math Section

Math Test – Calculator



Additional Calculator Tips for Students

- Don't try to use the calculator on every question—no question requires one.
- Decide how to solve each problem; then decide whether to use a calculator.
- Make sure your calculator is in good working order and that batteries are fresh.
- Students will not be permitted to use laptops or other computers, tablets, cell phones, or smartphones, etc. Please reference the student guide for a complete list.

More Information:

- No Cell Phone
- No Eating or Drinking in Test Room
- No Bags in Test Room
- No Graphing Calculators

Take the 2020 PSAT/NMSQT

Test Day/Date: October 17, 2020

Time: Line Up/Temperature
Checks & COVID

Location: Statements

Begin @ 7:00am

Pelham Middle School

Roster Posted in Lobby

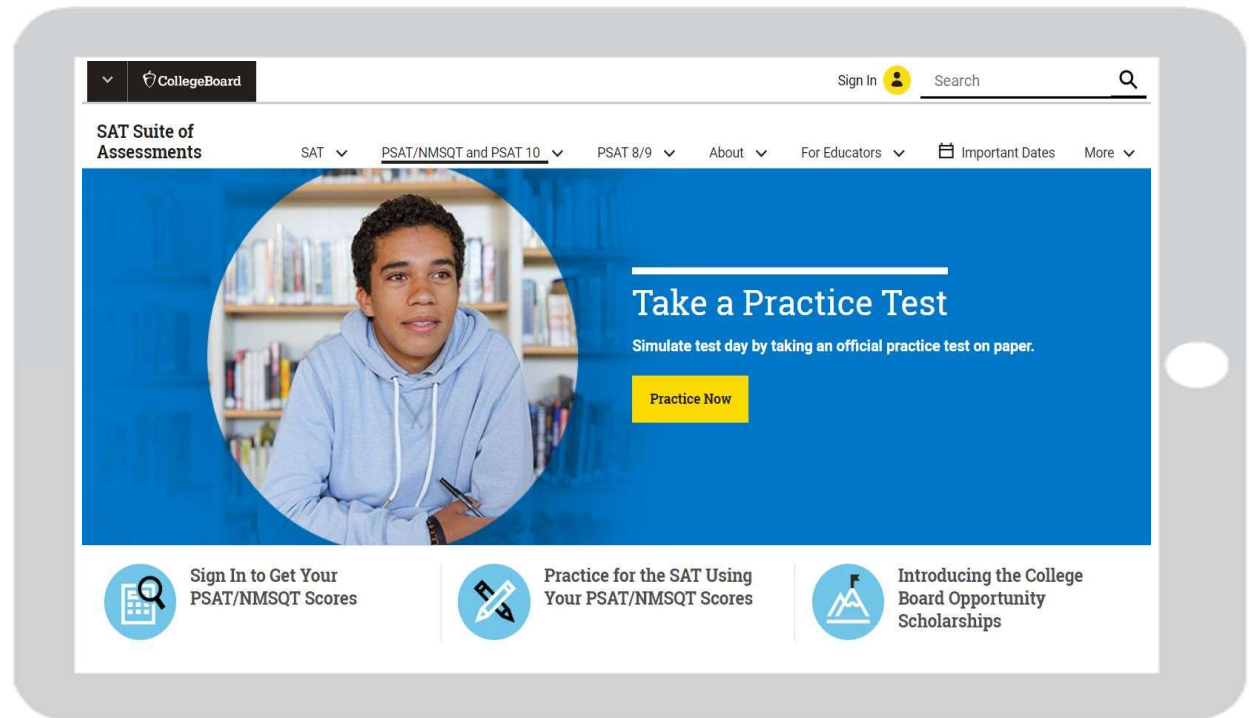
Make sure you bring:

- Two No. 2 pencils
- Calculator

Resources

A blue-tinted photograph of a group of people walking on a brick path. The image is partially obscured by a white horizontal line and the word 'Resources' in white text.

Resources



For general information about the PSAT/NMSQT, please visit:

collegeboard.org/psat

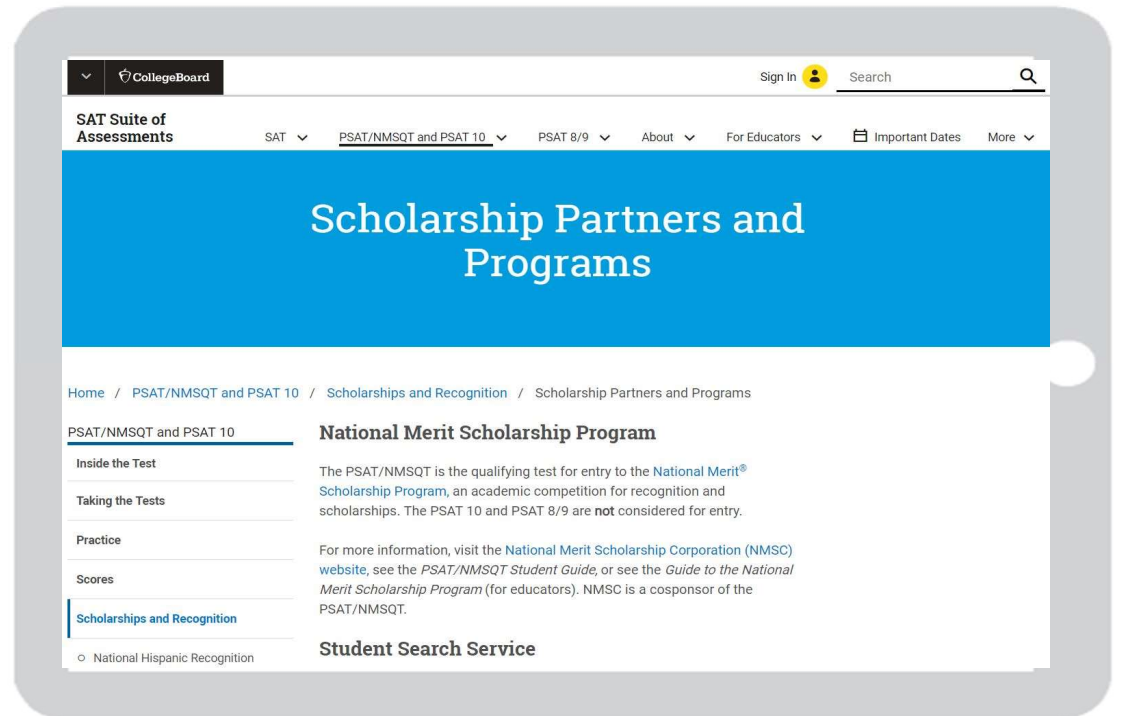
Resources



To find out more about National Merit Scholarship Corporation and its scholarships, visit:

[**nationalmerit.org**](https://nationalmerit.org)

Resources



To find out more about scholarship opportunities, visit:

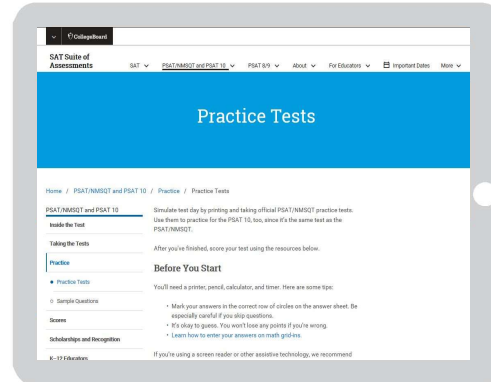
psat.org/scholarships

Resources



For personalized resources aligned to the SAT Suite of Assessments (including the PSAT/NMSQT), please visit:

khanacademy.org/sat



Take a PSAT/NMSQT practice test in the *PSAT/NMSQT Student Guide*, available through your counselor or at:

collegeboard.org/psatpractice

Practice Books Available in HS Lobby

Good luck!

PSAT/NMSQT®

 CollegeBoard /  NATIONAL MERIT
SCHOLARSHIP CORPORATION