



PLAN B

SCHOOL REOPENING PLAN MS FREQUENTLY ASKED QUESTIONS

THURSDAY, OCTOBER 8TH



Plan B: Hybrid Learning



Under Plan B, we will be operating at a limited capacity - 50%. Safety Protocols will be in place and we will run a hybrid schedule that would include both face-to-face instruction and remote learning each week.

Frequently Asked Questions

How was the decision made to transition from Plan C remote learning to Plan B hybrid learning?

Pine Lake Preparatory and the Board of Directors have been closely monitoring the 14-day trends specific to confirmed COVID-19 cases and percent positives in both Mecklenburg and Iredell Counties. In addition to following case data and trends, we have also leaned on consultation from local and state health departments, conversations with schools/districts currently operating under a hybrid learning model, as well as an epidemiologist to assist in interpreting the data and metrics.

- Data from Mecklenburg and Iredell Counties has considerably improved since our original decision in July. The current percent positive is near 5%, whereas we were closer to 12% in July.
- We have successfully opened K-5 with effective Health and Safety Protocols to limit the potential spread of COVID-19.
- We recognize the immense academic and developmental value of in-school instruction,
- Pine Lake Preparatory has developed a strong and effective hybrid plan that prioritizes health and safety procedures proven to minimize the spread of COVID-19. We have also been able to build in additional face-to-face remote opportunities during asynchronous off-campus days.

What will the Middle School *weekly* schedule look like under a Plan B?

Pine Lake Preparatory will be operating at 50% capacity with students coming into the school buildings on alternating days. While half of our students would be on campus experiencing face-to-face instruction, the other half would be accessing course content remotely. The goal of a hybrid model is to take advantage of the value of face-to-face instruction while also ensuring there is adequate room for social distancing in the building/classroom. All students will be working independently on Wednesdays while buildings are deep cleaned. We will also utilize Wednesdays for remediation, tutoring, office hours, teacher planning and professional development.

| MONDAY | TUESDAY | WEDNESDAY | THURSDAY | FRIDAY |
|---|---|--|---|---|
| Group 1: On Campus | Group 1: On Campus | Deep Cleaning, Remediation, Tutoring, Office Hours, etc. | Group 2: On Campus | Group 2: On Campus |
| Group 2: At Home Asynchronous Learning | Group 2: At Home Asynchronous Learning | Group 1 / 2: At Home Asynchronous Learning | Group 1: At Home Asynchronous Learning | Group 1: At Home Asynchronous Learning |

What will the Middle School *daily* schedule look like under a Plan B?

Students will have seven (55 minute) classes per day: English/Language Arts, Spanish, Social Studies, Science, Math, Healthful Living/PE and an elective. The electives will include a quarterly rotation of Visual Arts, Music, Theatre Arts and STEM. Students will remain in like-cohorts throughout the day with minimal class changes. When possible, teachers will be rotating and students will use the same classroom throughout the day. **See Appendix A** for a daily bell schedule.

Will students and staff be required to wear masks while on campus under a Plan B?

Yes, under all three Plans (Plan A, B and C) each of the Pine Lake Preparatory Health and Safety Protocols will be required so that we may promote a safe and healthy campus for the 2020-2021 school year.

All students and staff (K-12) are required to wear a cloth face covering that covers their nose and mouth. Students and staff may remove the cloth face covering during lunchtime and potentially other times when “mask breaks” can safely be conducted as directed by their teacher. Please note that face shields are not a substitute for the cloth face coverings; however, they may be worn in addition to the face covering.

Pine Lake Preparatory will provide each child with 5 cloth face coverings that were provided by the state of North Carolina. You are welcome to use the cloth face coverings provided, or you may choose to provide your own. We encourage all families to choose whatever is most comfortable for their child.

We encourage students to pack two cloth face coverings so that they may switch to a clean cloth face covering after lunch, or in the event that it gets wet during the day.

What will asynchronous days look like for my son/daughter?

Each of your child’s teachers will provide asynchronous work for your child to be completed Wednesday, and the two days their group is at home. This work will primarily be independent, self-paced learning, as teachers are teaching students in-person during your child’s asynchronous days. This asynchronous assignments will be located on Canvas each day.

It is important to understand that while asynchronous work will be independent and self-paced, we will have remote, face-to-face instruction for English/Language Arts on two of your child's asynchronous days (either Monday/Tuesday or Thursday/Friday). This means your child will get two live face-to-face ELA classes PLUS two remote face-to-face ELA lessons (utilizing BigBlueButton) each week. Our hope is that this will help us maintain momentum in the ELA courses while also providing structure for the asynchronous days.

Can my child switch from one Group to another?

Unfortunately, no. Currently, switching groups is not possible, recognizing the restrictions necessary to ensure effective distancing in the classroom.

Should my child bring his/her MacBook to school under Plan B, or should it be left at home?

Yes, students should bring their school issued MacBook Air to school each day on campus. Please ensure the computer has been charged.

Will my student still have X-Block under a Plan B?

No, X-Block is only utilized during Plan C. We shift to include only 1st - 7th period under a Plan B so that we can increase the instructional time in the face-to-face setting. Each class is flexed from 50 minutes to 55 minutes.

What will lunch look like for Middle School Students under a Plan B? Will hot lunch options be available to order through MyPaymentsPlus?

Under Plan B, hot lunch options will again become available to our students. All ordered lunches will be delivered to your child by a staff member or volunteer utilizing safety protocols. Lunches will be eaten within the classroom or in a designated space provided by the teacher. In addition to the classrooms, Pine Lake has created several additional outdoor areas where classes will be invited to eat at on a rotating basis.

We anticipate opening the Hot Lunch portal for ordering mid/late October for the month of November.

What supplies should my Middle School child bring to school each day?

Outside of necessary school supplies, other personal belongings should be kept at home. With that being said, we do encourage students to carry their own water bottle daily. While we will have water bottle fillers available in each building, we will be disconnecting our traditional water fountains.

Will my child need to wear their school uniform to each day they are on campus?

Yes, students should come to school dressed in their PLP school uniform or PE uniform each day on campus. They may wear a PLP Spirit top with uniform bottoms on Tuesdays and Fridays.

Will there be any changes to the master calendar under Plan B?

There is one minor change to the master calendar. Parent conferences will be rescheduled to the week of November 2nd. Group 2 will attend school on Friday, October 30th, which was previously designated as a "*No School, Parent Teacher Conference*" day.

Please see the Plan B Calendar for a complete list of Group 1 and Group 2 days. **See Appendix B.**

Will PLP buses be on the road under a Plan B? Are seats still available on any of the routes?

Yes, PLP buses are in operation in Plan B, with appropriate spacing. All afternoon shuttles are full, however there are spots open in the mornings. Please contact Joe.Webb@pinelakeprep.org to request to be added to a morning route. If you would like to join a waitlist for afternoon shuttles, please [Click Here](#).

Will students still have the opportunity to participate in competitive athletics at the Middle School this year?

Yes, the schedule has been modified by the league; please reference the information that was in the Pride Post October 4th. It can also be found on the PLP website on the Athletics page

[Click Here](#) to visit the Athletics Page.

What will arrival look like each morning under a Plan B?

All students should be dropped off at the Upper School building before walking to the front doors of the Middle School. Upon arrival at the front door, your child(ren) will be greeted by a Pine Lake Preparatory staff member. At that time, the student will verbally self-attest before having their temperature taken. It is important to recognize that this is the first, and an important layer of health protocols/procedures we have in place to ensure a healthy and clean campus. Please practice/review the attestation questions with your child prior to the first day of school. See **Appendix C** for the document.

All students must put their cloth face covering on prior to exiting their vehicle in front of the Upper School.

A flow chart has been included in **Appendix D** to help families better understand the screening protocols.

What will dismissal look like each afternoon under a Plan B?

PikmyKid will be used daily for dismissal. Please ensure pickup mode is accurate. All changes in PikmyKid should be made before 1:00 pm (or the program will not accept changes). Any changes in transportation should also be communicated before 1:00 pm to Julie Howard 704-237-5307.

Middle School Families with Lower School siblings may begin arriving on campus at 3:10 pm. Families who are not picking up a LS student (MS only families) should not arrive prior to 3:25 pm. All students must be picked up by 3:50 pm. Please "Announce" as you get to the PikMyKid sign each afternoon.

Name cards should be displayed on the dashboard daily for both arrival and dismissal for the duration of the school year. Please simply write your child(rens) name(s) and PikMyKid number on a large sheet of paper to be displayed on your dashboard for the first week and we will provide you with a replacement for the year.

If you have additional questions, or need help retrieving your number, please do not hesitate to reach out to Lauri Schatz or Julie Howard.

In addition to cloth face coverings, what other safety protocols will be in place under a Plan B?

The Pine Lake Preparatory Health and Safety Protocols have been developed to support a safe and healthy campus for the 2020-2021 school year. The ability to open our doors, and keep them open, will rely on a community effort to support and adhere to each guideline. These protocols include, and will be in place during in-person/on-campus instruction under Plan B:

- The Three W's - Wear, Wash and Wait
- Social Distancing and Minimizing Exposure
- Cloth Face Coverings
- Monitoring for Symptoms
- A Healthy and Clean Campus - routine cleaning and sanitizing throughout the day

For the complete list and description of Health and Safety Protocols please see the Pine Lake Preparatory Reopening Plan.

What will my child's classroom look like?

Classrooms have been redesigned to facilitate appropriate distancing while remaining both welcoming and conducive to instruction. Most rooms will have individual desks to facilitate distancing, while a few will have classroom tables that will be shared by 2 students equipped with a plexiglass divider.

Within the classroom, we will limit sharing of personal items and school supplies (writing utensils, scissors, glue sticks, markers, etc.) and students will keep personal items separate. Outside of necessary school supplies, other personal belongings should be kept at home.

Will I be notified if a student in my child's classroom cohort tests positive for COVID-19?

Yes, if a student/adult in your child's classroom tests positive for COVID-19 you will receive notification from the school. Please understand that Pine Lake Preparatory will be working closely with the Iredell Health Department anytime there is a suspected, presumptive or confirmed case. **See Appendix E** for a sample classroom letter.

Is there a way I can track the number of current confirmed positive COVID-19 tests at Pine Lake Preparatory?

Yes. Pine Lake Preparatory is working hard to protect its approximately 1,800 students and 200 employees from COVID-19, but it's important to recognize that there will likely be positive cases this school year. While we are not immune to COVID-19, we can help to limit potential exposure/spread through the effective adherence to our Health and Safety Protocols.

We will use the following COVID-19 Dashboard to communicate positive tests in the school community. This information will be available on the COVID-19 portal of PineLakePrep.org and will be updated every Friday by 5:00 p.m. **See Appendix F** for the template.

How can I find out more information?

We will host a parent/guardian webinar on October 14th at 2:00 pm. The session will be recorded if you are unable to attend. You are welcomed to send questions in advance to be addressed during the webinar. Please send questions to Communications@pinelakeprep.org.

[Click Here](#) to register for the webinar.

Appendix A: Daily Bell Schedule

The following daily bell schedule will be in place during face-to-face on campus days.



1st block: 8:00 am - 8:55 am

2nd block: 9:00 am - 9:55 am

3rd block: 10:00 am - 10:55 am

4th block: 11:00 am - 11:55 am

Lunch: 11:55 am - 12:25 pm

5th block: 12:25 pm - 1:20 pm

6th block: 1:25 pm - 2:20 pm

7th block: 2:25 pm - 3:20 pm

Appendix B: Plan B Calendar

Pine Lake Preparatory PLAN B Calendar

2020-2021 School Calendar

| July 2020 | | | | | | |
|-----------|----|----|----|----|----|----|
| Su | M | Tu | W | Th | F | Sa |
| | | | 1 | 2 | 3 | 4 |
| 5 | 6 | 7 | 8 | 9 | 10 | 11 |
| 12 | 13 | 14 | 15 | 16 | 17 | 18 |
| 19 | 20 | 21 | 22 | 23 | 24 | 25 |
| 26 | 27 | 28 | 29 | 30 | 31 | |

| August 2020 | | | | | | |
|-------------|----|----|----|----|----|----|
| Su | M | Tu | W | Th | F | Sa |
| | | | | | | 1 |
| 2 | 3 | 4 | 5 | 6 | 7 | 8 |
| 9 | 10 | 11 | 12 | 13 | 14 | 15 |
| 16 | 17 | 18 | 19 | 20 | 21 | 22 |
| 23 | 24 | 25 | 26 | 27 | 28 | 29 |
| 30 | 31 | | | | | |

| September 2020 | | | | | | |
|----------------|----|----|----|----|----|----|
| Su | M | Tu | W | Th | F | Sa |
| | | 1 | 2 | 3 | 4 | 5 |
| 6 | 7 | 8 | 9 | 10 | 11 | 12 |
| 13 | 14 | 15 | 16 | 17 | 18 | 19 |
| 20 | 21 | 22 | 23 | 24 | 25 | 26 |
| 27 | 28 | 29 | 30 | | | |

| October 2020 | | | | | | |
|--------------|----|----|----|----|----|----|
| Su | M | Tu | W | Th | F | Sa |
| | | | | 1 | 2 | 3 |
| 4 | 5 | 6 | 7 | 8 | 9 | 10 |
| 11 | 12 | 13 | 14 | 15 | 16 | 17 |
| 18 | 19 | 20 | 21 | 22 | 23 | 24 |
| 25 | 26 | 27 | 28 | 29 | 30 | 31 |

| November 2020 | | | | | | |
|---------------|----|----|----|----|----|----|
| Su | M | Tu | W | Th | F | Sa |
| 1 | 2 | 3 | 4 | 5 | 6 | 7 |
| 8 | 9 | 10 | 11 | 12 | 13 | 14 |
| 15 | 16 | 17 | 18 | 19 | 20 | 21 |
| 22 | 23 | 24 | 25 | 26 | 27 | 28 |
| 29 | 30 | | | | | |

| December 2020 | | | | | | |
|---------------|----|----|----|----|----|----|
| Su | M | Tu | W | Th | F | Sa |
| | | 1 | 2 | 3 | 4 | 5 |
| 6 | 7 | 8 | 9 | 10 | 11 | 12 |
| 13 | 14 | 15 | 16 | 17 | 18 | 19 |
| 20 | 21 | 22 | 23 | 24 | 25 | 26 |
| 27 | 28 | 29 | 30 | 31 | | |

| January 2021 | | | | | | |
|--------------|----|----|----|----|----|----|
| Su | M | Tu | W | Th | F | Sa |
| | | | | | 1 | 2 |
| 3 | 4 | 5 | 6 | 7 | 8 | 9 |
| 10 | 11 | 12 | 13 | 14 | 15 | 16 |
| 17 | 18 | 19 | 20 | 21 | 22 | 23 |
| 24 | 25 | 26 | 27 | 28 | 29 | 30 |
| 31 | | | | | | |

| February 2021 | | | | | | |
|---------------|----|----|----|----|----|----|
| Su | M | Tu | W | Th | F | Sa |
| | 1 | 2 | 3 | 4 | 5 | 6 |
| 7 | 8 | 9 | 10 | 11 | 12 | 13 |
| 14 | 15 | 16 | 17 | 18 | 19 | 20 |
| 21 | 22 | 23 | 24 | 25 | 26 | 27 |
| 28 | | | | | | |

| March 2021 | | | | | | |
|------------|----|----|----|----|----|----|
| Su | M | Tu | W | Th | F | Sa |
| | 1 | 2 | 3 | 4 | 5 | 6 |
| 7 | 8 | 9 | 10 | 11 | 12 | 13 |
| 14 | 15 | 16 | 17 | 18 | 19 | 20 |
| 21 | 22 | 23 | 24 | 25 | 26 | 27 |
| 28 | 29 | 30 | 31 | | | |

| April 2021 | | | | | | |
|------------|----|----|----|----|----|----|
| Su | M | Tu | W | Th | F | Sa |
| | | | | 1 | 2 | 3 |
| 4 | 5 | 6 | 7 | 8 | 9 | 10 |
| 11 | 12 | 13 | 14 | 15 | 16 | 17 |
| 18 | 19 | 20 | 21 | 22 | 23 | 24 |
| 25 | 26 | 27 | 28 | 29 | 30 | |

| May 2021 | | | | | | |
|----------|----|----|----|----|----|----|
| Su | M | Tu | W | Th | F | Sa |
| | | | | | | 1 |
| 2 | 3 | 4 | 5 | 6 | 7 | 8 |
| 9 | 10 | 11 | 12 | 13 | 14 | 15 |
| 16 | 17 | 18 | 19 | 20 | 21 | 22 |
| 23 | 24 | 25 | 26 | 27 | 28 | 29 |
| 30 | 31 | | | | | |

| June 2021 | | | | | | |
|-----------|----|----|----|----|----|----|
| Su | M | Tu | W | Th | F | Sa |
| | | 1 | 2 | 3 | 4 | 5 |
| 6 | 7 | 8 | 9 | 10 | 11 | 12 |
| 13 | 14 | 15 | 16 | 17 | 18 | 19 |
| 20 | 21 | 22 | 23 | 24 | 25 | 26 |
| 27 | 28 | 29 | 30 | | | |



Staff Planning (no school for students)

Group 1
Group 2

| | |
|-------------|---|
| August 3-11 | Teacher In-Service-August 3-4 new teachers only |
| Aug 12 | First Day of School for Grades K, 6 and 9; early release |
| Aug. 13 | First Day of School for Grades 1-5, 7-8, 10-12, full day |
| Sept. 7 | Labor Day, No School |
| Sept. 28 | Teacher Professional Development - no school for students |
| Oct 9 | End of Q1 |
| Oct 12-13 | Fall Break |
| Nov. 11 | Veterans Day |
| Nov. 23-27 | Thanksgiving Break |

| | |
|---------------|---|
| Dec 18 | End of Q2 |
| Dec 21-Jan. 1 | Winter Break - No School |
| Jan. 18 | Martin Luther King, Jr. Day - no school |
| 5-Mar | End of Q3 |
| March 8 | Staff Planning; No School for Students |
| April 5-9 | Spring Break |
| May 28 | Last Day of School |
| May 29 | Class of 2021 Graduation |
| June 1-3 | Teacher Workdays |

Appendix C: Symptom Attestation Document

Before students exit their vehicle during arrival, Lower School families will have already completed the symptom attestation through PikMyKid. Please take time to familiarize yourself with the questions. Families will need to complete the attestation any time their child is on campus.



Have you had close contact (within 6 feet for at least 15 minutes) in the last 14 days with someone diagnosed with COVID-19, or has any health department or health care provider been in contact with you and advised you to quarantine?

☐ Yes - The person should not be at school. The person can return 14 days after the last time they had close contact with someone with COVID-19, or as listed below.

☐ No - The person can be at school if they are not experiencing symptoms.

In the past 14 days, have you, or anyone in your household had any of these symptoms?

- ☐ o Fever
- ☐ o Chills
- ☐ o Shortness of breath or difficulty breathing
- ☐ o New cough
- ☐ o New loss of taste or smell

☐ Yes - If a person has any of these symptoms, they should go home, stay away from other people, and call their health care provider

☐ No - The person can be at school if they are not experiencing symptoms

In the past 14 days, have you been diagnosed with COVID-19?

☐ Yes - If a person is diagnosed with COVID-19 based on a test, their symptoms, or does not get a COVID-19 test but has had symptoms, they should not be at school and should stay at home.

☐ No - The person can be at school if they are not experiencing symptoms

Student/Parent/Guardian Initial: _____

Appendix D: Daily Screening

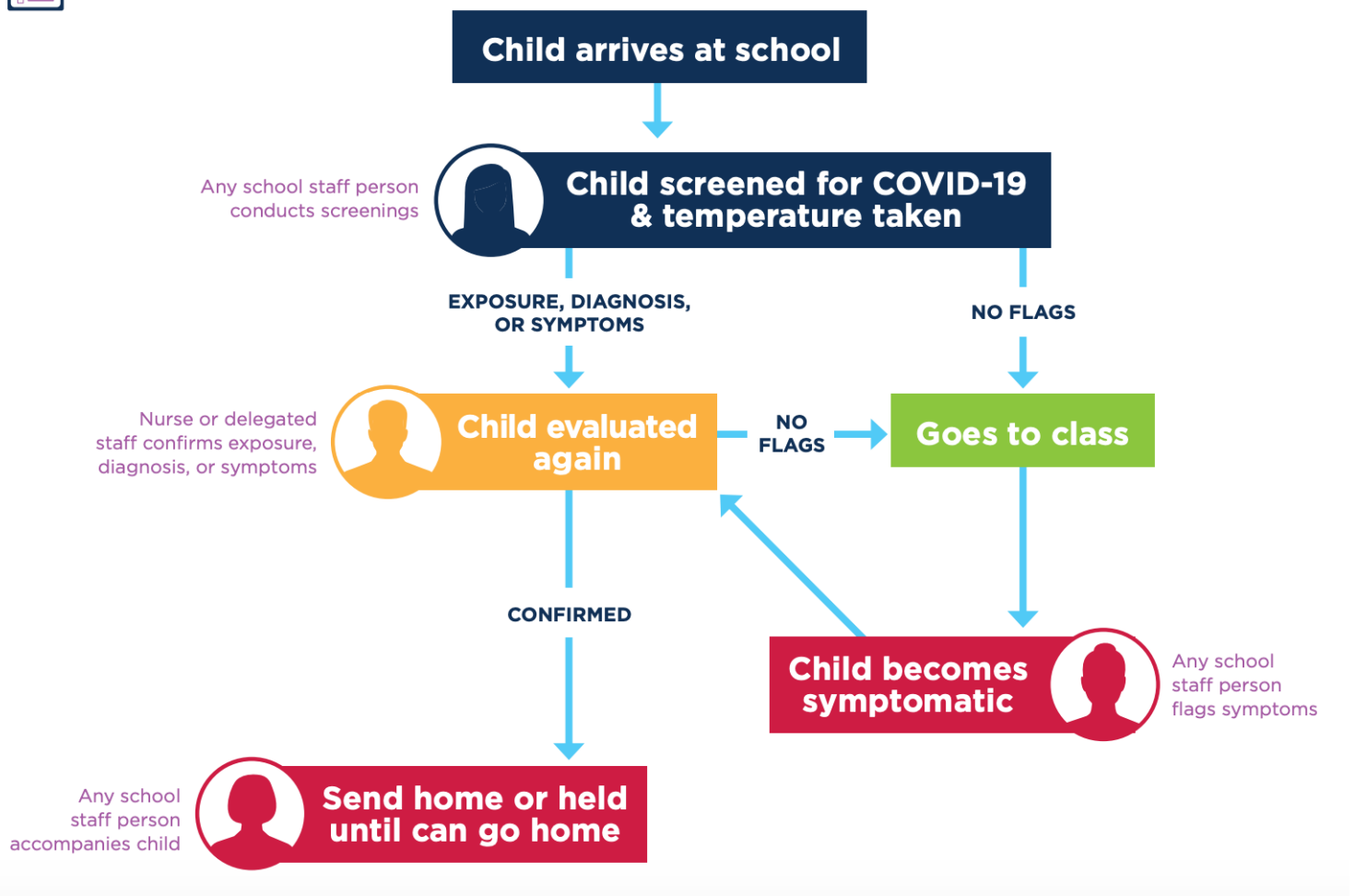
Before students enter the building, Middle School students will be screened for symptoms as part of the attestation. Middle School students will verbally self-attest each morning.

Pine Lake Preparatory will follow the North Carolina Health and Human Services guidelines for screening students as outlined in the flow chart below:

Daily Screening for COVID-19



Staff Roles Flow Chart



Daily Temperature Checks

In addition to the symptom attestation, Each student will have their temperature taken prior to entering the building. Anyone with a temperature above 100.3 degrees will not be permitted to enter the building. A second, follow up temperature will be taken by a school nurse or designated staff member to confirm a temperature above 100.3 degrees.

Appendix E: Sample Parent Notification



Good morning/afternoon/evening,

On Day, Month Date Pine Lake Preparatory received notification that a student/employee in your child's classroom cohort has tested positive for COVID-19 (Coronavirus). While we must protect the privacy of the individual involved, we are committed to transparency in our community.

We have worked in collaboration with the individual, school staff and the Iredell Health Department to determine that there were no close contacts to the individual who tested positive.

Close contact is defined by being within six feet of a person that has been diagnosed with COVID-19 for at least 15 minutes, with or without a mask. Out of an abundance of caution, we will close the impacted classroom for ***X days*** as we continue to clean and disinfect all areas of the classroom, including any areas of potential impact in the building, according to the recommendations from the Centers for Disease Control and Prevention and the North Carolina Department of Health and Human Services.

Once more, please understand that you are receiving this letter in an effort to provide continual and transparent communication. Staff, as well as families in the classroom are receiving this note. The effective adherence to safety protocols and procedures have resulted in zero close contacts/exposures.

Attached you will find a formal communication from the Iredell County Health Department further illustrating our partnership, the dedication to ensuring a healthy and safe campus, and the handling of the positive test. We continue to encourage all parents to monitor students closely for any sign of potential illness. Students should remain at home if they are exhibiting any symptoms of COVID-19 including fever, chills, shortness of breath or difficulty breathing, new or persistent cough, and/or new loss of taste or smell.

We appreciate your continued support. If you have any questions, feel free to contact Rebecca Long (School Nurse) at Rebecca.Long@PineLakePrep.org or Andrew Mocerri (Executive Director) at Andrew.Mocerri@PineLakePrep.org.

Sincerely,

Andrew Mocerri
Executive Director
Pine Lake Preparatory

Appendix F: COVID-19 Dashboard

Pine Lake Preparatory is working hard to protect its approximately 1,800 students and 200 employees from COVID-19, but it's important to recognize that there will likely be positive cases this school year. While we are not immune to COVID-19, we can help to limit potential exposure/spread through the effective adherence to our Health and Safety Protocols.

Pine Lake Preparatory and the Iredell County Health Department will be working together to implement contact tracing when members of our school community test positive. We are committed to providing timely and transparent information to individuals who have potentially been exposed to COVID-19. At the same time, we must comply with state and federal mandates – including the Family Educational Rights and Privacy Act (FERPA) and the Health Insurance Portability and Accountability Act of 1996 (HIPAA) – to protect the privacy of our students and employees.

With that in mind, we will use the following COVID-19 Dashboard to communicate positive tests in the school community. This information will be available on the COVID-19 portal of PineLakePrep.org on Monday, September 28th and will be updated every Friday by 5:00 p.m.

Pine Lake Preparatory COVID-19 Dashboard

| Building | Total Number of Individuals in the Building | Current Number of COVID-19 Positive | Current Percent of COVID-19 Positive |
|---------------|---|-------------------------------------|--------------------------------------|
| Lower School | X students/staff | 0 | 0% |
| Middle School | X students/staff | 0 | 0% |
| Upper School | X students/staff | 0 | 0% |

Last Updated: Friday, October 2nd

