

# ISZL High School Profile 2020–21

## OUR SCHOOL

Founded in 1961, ISZL is a private, non-profit day school providing education for students aged 3 to 18 in Central Switzerland. We are an International Baccalaureate World School. Through dynamic and hands-on learning opportunities offered in and outside the classroom, a rigorous academic programme, community and service orientated experiences, and the international cultures represented by our community, ISZL connects students to the greater world around them.

<b>CEEB Code</b> <b>796221</b>	<b>IB Code</b> <b>1837</b>	<b>UCAS Number</b> <b>48147</b>
-----------------------------------	-------------------------------	------------------------------------

### LEADERSHIP

<b>Barry Dequanne</b>	Director
<b>Eddie Wexler</b>	Head of High School
<b>Louisa Radford</b>	High School Assistant Principal (Grades 9–10)
<b>Philip Bruce</b>	High School Assistant Principal (Grades 11–12)

### COUNSELLORS

<b>Pauline Davidson</b>	College Counsellor (A–K) pauline.davidson@iszl.ch
<b>Allan Birimac</b>	College Counsellor (L–Z) allan.birimac@iszl.ch
<b>Monika Birimac</b>	High School Counsellor, Grades 9 & 11
<b>Erin Tewsley</b>	High School Counsellor, Grades 10 & 12

### CURRICULUM COORDINATORS

<b>Zoe Badcock</b>	IB Diploma Programme Coordinator zoe.badcock@iszl.ch
<b>Robert Sugden</b>	High School & Career-related Programmes Coordinator robert.sugden@iszl.ch
<b>Maria le Guen</b>	IB MYP Coordinator maria.leguen@iszl.ch

### ISZL RIVERSIDE CAMPUS



Rothusstrasse 4b  
6331 Hünenberg, Switzerland  
Tel. +41 41 768 29 50  
Fax +41 41 768 29 51  
office.riverside@iszl.ch, www.iszl.ch

## OUR MISSION

We are a community of learners determined to make the world – or our corner of it – a better, kinder place. We reflect our values in everything we do so that we make the most of opportunities and challenges in a spirit of enthusiastic inquiry.

## OUR VISION

We help every student turn their learning into action, creating the opportunity to stretch themselves further and achieve more than they believe possible.

## ACCREDITATION

ISZL is accredited by the Council of International Schools (CIS) and the New England Association of Schools and Colleges (NEASC), a US-based accrediting commission. ISZL is also a fully authorised International Baccalaureate (IB) World School offering four IB programmes for ages 3–18. It is also a member of the Swiss Group of International Schools (SGIS) and the Educational Collaborative for International Schools (ECIS).

## ACADEMIC PROGRAMME

ISZL provides a rigorous college preparatory High School curriculum that leads to our NEASC-accredited ISZL High School Diploma. Students partake in a well-rounded educational experience through the successful completion of the IB Middle Years Programme (MYP) in Grades 9–10 and the opportunity for specialised study in Grades 11–12.

## HIGH SCHOOL GRADUATION REQUIREMENTS

In order to graduate from ISZL, students must demonstrate satisfactory completion of the IB Middle Years Programme and subsequent satisfactory completion of the IB Diploma Programme or IB Career-related Programme, or the ISZL High School Programme, including a minimum of:

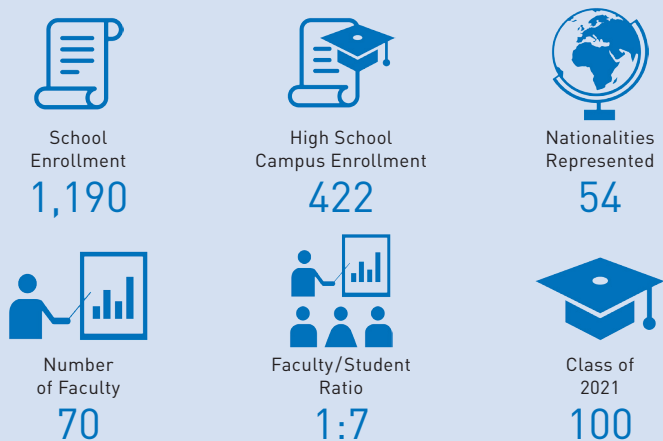
- **Ten** courses over Grades 11 and 12
- **Six** courses in both Grades 9 and 10
- **Four** years: Service project(s)
- **Three** years: English and humanities and science and mathematics (at least one year in Grade 11 or 12)
- **Two** years: Language acquisition
- **Two** years: Arts or Design or Physical and Health Education

## PERSONAL DEVELOPMENT PROGRAMME (PDP)

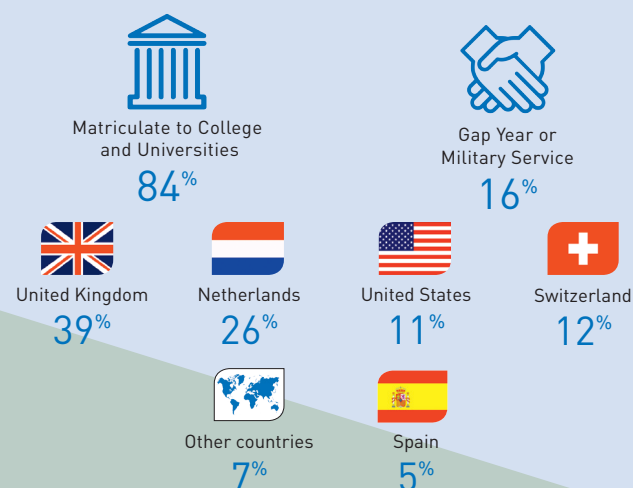
The PDP is a mandatory component of the ISZL Pastoral Curriculum. The PDP is made up of three school-wide elements – Personal, Social and Health Education, Service Projects and a Personal Development Week – that engage students in their development as well-rounded individuals.

# ISZL AT A GLANCE

## 2020–21 FACTS AND FIGURES



## CLASS OF 2020 MATRICULATION AND DESTINATIONS



# ISZL GRADING SYSTEM

## ISZL 7-POINT GRADING SCALE VS. LETTER GRADE AND PERCENTAGE RANGE

ISZL employs a 7-point internal grading scale influenced by, but not equivalent to, the IB 1–7 grading system. ISZL does not produce or report a Grade Point Average (GPA) nor rank students.

ISZL 7-POINT GRADING SCALE	ISZL APPROXIMATE LETTER GRADE	ISZL APPROXIMATE PERCENTAGE RANGE
7	A+	98 – 100
6	A- / A	90 – 97
5	B / B+	83 – 89
4	C+ / B-	78 – 82
3	C- / C	70 – 77
2	D	60 – 69
1	F	0 – 59

Please note that ISZL does not utilize a letter-based grading scale or percentages. The equivalencies provided above are additionally not universally recognised or accepted and, instead, are provided to help outside educational institutions gain an appreciation of our 1–7 grading scale.

# ISZL COURSE OFFERINGS

## 2020–21 ISZL GRADE 11 AND 12 COURSE OFFERINGS

### LANGUAGE & LITERATURE

- English: Innovations in Communication
- English Language & Literature
- AP® English Language & Composition
- AP® English Literature & Composition
- IB English A: Language & Literature SL/HL
- IB English A: Literature SL/HL
- IB German A: Language & Literature SL/HL
- IB Language A: Literature SL/HL (other languages)
- Creative Media Production
- BTEC Subsidiary Diploma in Creative Media

### INDIVIDUALS AND SOCIETIES

- Humanities: Global Innovations
- AP® Comparative Government & Politics
- AP® Economics (Micro & Macro)
- AP® Microeconomics
- AP® Macroeconomics
- AP® European History
- AP® Human Geography
- AP® United States History
- IB Economics SL/HL
- IB Environmental Systems and Societies SL
- IB Global Politics SL/HL
- IB Geography SL/HL
- IB History SL/HL
- IB Psychology SL/HL (online)
- Creative Media Production
- BTEC Subsidiary Diploma in Creative Media

### MATHEMATICS

- Pre-Calculus
- AP® Calculus AB
- AP® Calculus BC
- IB Mathematical Studies SL
- IB Mathematics SL/HL
- IB Mathematics: Analysis & Approaches SL/HL
- IB Mathematics: Applications & Interpretations SL

### LANGUAGE ACQUISITION

- French High Intermediate
- German High Intermediate
- Spanish High Intermediate
- AP® French Language & Culture
- AP® German Language & Culture
- AP® Spanish Language & Culture
- IB German *ab initio* SL
- IB French B SL/HL
- IB German B SL/HL
- IB Spanish B SL/HL
- IB Language B SL/HL (other languages)

### SCIENCE

- Biology
- Chemistry
- Physics
- Science: Innovation in Action
- AP® Biology
- AP® Chemistry
- AP® Environmental Science
- AP® Physics 1
- AP® Physics C
- IB Biology SL/HL
- IB Chemistry SL/HL
- IB Computer Science SL/HL
- IB Environmental Systems and Societies SL
- IB Physics SL/HL
- IB Psychology SL/HL (online)
- IB Sports, Exercise and Health Science SL/HL

### THE ARTS

- Music: Innovations in Technology
- Studio Art
- AP® 2-D Art & Design
- AP® 3-D Art & Design
- AP® Drawing
- IB Film SL/HL (online)
- IB Music SL/HL
- IB Theatre SL/HL
- IB Visual Arts SL/HL
- Creative Media Production

### COMPUTER SCIENCE

- AP® Computer Science A
- IB Computer Science SL/HL
- Creative Media Production

### ELECTIVES

- Theory of Knowledge (required of all IBDP students)
- IB Personal & Professional Skills (required of all IBCP students)



## COVID-19 STATEMENT

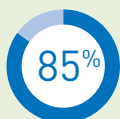
Due to COVID-19, our student report cards reflect learning and assessment that occurred while our students were following an at-home learning plan during March–May 2020. Every effort was made to represent the student's progress with integrity.

# IB AND BTEC RESULTS

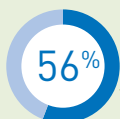
## INTERNATIONAL BACCALAUREATE (IB) GRADES 2020



SUBJECT GROUP	GRADE							TOTAL
	7	6	5	4	3	2	1	
Language A1 (Group 1)	24	43	12	2	0	0	0	81
Language B (Group 2)	24	25	5	1	0	0	0	55
Individuals & Societies (Group 3)	16	26	35	10	1	0	0	88
Experimental Sciences (Group 4)	17	21	33	19	3	0	0	93
Mathematics (Group 5)	2	21	29	17	5	0	0	74
Arts or Electives (Group 6)	3	4	7	1	0	0	0	15
<b>Total Number 2020</b>	<b>86</b>	<b>140</b>	<b>121</b>	50	9	0	0	406
<b>Total Percentage (%) 2020</b>	<b>21</b>	<b>35</b>	<b>30</b>	12	2	0	0	100
Total Number 2019	44	132	105	46	14	1	0	342
Total Percentage (%) 2019	13	39	31	13	4	0	0	100



ISZL IB exams with scores of 5 or higher



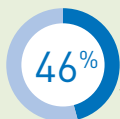
ISZL IB exams with scores of 6 or higher

## IB DIPLOMA PROGRAMME (IBDP) GRADES 2020 VS. 2019 AND 2018

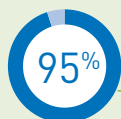
CATEGORY	2020	2019	2018
No. of candidates entered for Diploma	63	60	66
Number of candidates passing Diploma	63	58	66
<b>Avg. points of candidates passing Diploma</b>	<b>36</b>	<b>35</b>	35
<b>Highest points of ISZL student (max. 45)</b>	<b>44</b>	<b>44</b>	44
<b>Average subject grade of ISZL students</b>	<b>5.7</b>	<b>5.5</b>	5.4
World average of subjects studied by ISZL students	5.0	4.8	4.8
Students scoring 24–29 points	3 (5%)	6 (10%)	6 (9%)
Students scoring 30–35 points	27 (43%)	28 (48%)	30 (45%)
Students scoring over 36 points	33 (46%)	24 (41%)	30 (45%)



ISZL IB Diploma Programme pass rate



ISZL IBDP students scoring 36 points or higher



ISZL IBDP students scoring 30 points or higher



Highest IBDP points obtained by an ISZL student

44

ISZL average IBDP score

36

Average subject grade of ISZL students

5.7

## IB CAREER-RELATED PROGRAMME (IBCP) 2020



3 ISZL students achieved the IBCP qualification



## PEARSON BTEC SUBSIDIARY DIPLOMA 2020

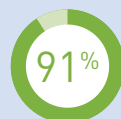
DIPLOMA	Distinction*	Distinction	Merit	Pass	Achieved Award
in Business	2	-	1	1	<b>4 (100%)</b>
in Creative Media Production	1	-	1	2	<b>4 (100%)</b>

# AP® RESULTS

## ADVANCED PLACEMENT® (AP) EXAM GRADES 2020



SUBJECT GROUP	GRADE					TOTAL
	5	4	3	2	1	
Arts	0	8	5	0	0	13
English	3	10	11	6	0	30
Humanities	28	21	18	6	4	77
Languages	39	14	0	0	0	53
Mathematics	15	9	4	3	0	31
Sciences	20	17	15	4	1	57
<b>Total Number 2020</b>	<b>105</b>	<b>79</b>	<b>53</b>	19	5	261
<b>Total Percentage (%) 2020</b>	<b>40</b>	<b>30</b>	<b>20</b>	7	2	100
Total Number 2019	80	64	57	33	4	238
Total Percentage (%) 2019	34	27	24	14	1	100



ISZL AP exams with scores of 3 or higher



ISZL AP exams with scores of 4 or higher

AP® Scholars	AP® Scholars with honours	AP® Scholars with distinction	AP® International Diploma recipients
15	15	19	8

# SAT RESULTS

## SAT RESULTS CLASS OF 2020



SECTION	MIDDLE 50%
Evidence Based Reading and Writing	560–670
Mathematics	560–740
<b>Total</b>	<b>1130–1400</b>

Evidence Based Reading and Writing	Mathematics	Total
ISZL Mean 2020	ISZL Mean 2020	ISZL Mean 2020
<b>623</b>	<b>652</b>	<b>1276</b>
World Mean 2019: 531	World Mean 2019: 528	World Mean 2019: 1059

## TESTING RESTRICTIONS ON INTERNATIONAL STUDENTS AND U.S. CITIZENS ABROAD

In recent years our students have had less access to SAT/SAT Subject and ACT tests because of fewer sites offering the test, score cancellations, technology difficulties, and higher fees.

Please note that the graduating class of 2020 has no ACT test takers.

We ask that all higher education institutes take this into account when evaluating student applications.

# 2018–20 UNIVERSITY ACCEPTANCES AND MATRICULATION

Graduates from the International School of Zug and Luzern are admitted to universities and colleges around the world. Our students have a limit of ten applications worldwide. Schools who receive applications from ISZL can be assured the student is a serious applicant. Schools bolded indicate matriculation for the Class of 2020.

 <p><b>AUSTRALIA</b>            Australian National University            Monash University  <b>University of Melbourne</b>            University of Sydney  <b>University of Technology, Sydney</b>            University of Wollongong            UNSW Australia</p>	 <p><b>NETHERLANDS</b>            Amsterdam University College  <b>Eindhoven University of Technology</b>  <b>Erasmus University College</b>  <b>Erasmus University Rotterdam</b>            Fontys Hogescholen            Hanze University of Applied Sciences, Groningen            Hotelschool The Hague            HZ University of Applied Sciences  <b>Leiden University College The Hague</b>            Maastricht University            Radboud University            Rotterdam University of Applied Sciences            Technical University of Eindhoven            The Hague University of Applied Sciences  <b>Tilburg University</b>            University College Maastricht  <b>University College Roosevelt</b>            University College Tilburg  <b>University College Twente</b>            University College Utrecht  <b>University of Amsterdam</b>  <b>University of Applied Sciences Utrecht</b>            University of Groningen            University of Guelph            University of Twente  <b>Utrecht University</b>  <b>Vrije University Amsterdam</b>            Wageningen University            Willem de Kooning Academie            Zuyd University of Applied Sciences</p>	<p>Leeds College of Art &amp; Design            Liverpool John Moores University  <b>London School of Economics and Political Science, University of London</b>            Manchester Metropolitan University            New College of the Humanities            Northumbria University            Oxford Brookes University            Pearson College London            Queen Mary University of London            Ravensbourne University London  <b>Regent's University London</b>            Richmond, The American International University in London  <b>Royal Holloway, University of London</b>  <b>Royal Veterinary College</b>            School of Oriental and African Studies, University of London            Solent University            St Mary's University, Twickenham, London            Swansea University            University of Aberdeen  <b>University of Bath</b>  <b>University of Birmingham</b>            University of Brighton            University of Bristol            University of Buckingham  <b>University of Cambridge</b>            University of Central Lancashire            University of Chester            University of Dundee            University of East Anglia            University of East London  <b>University of Edinburgh</b>  <b>University of Essex</b>  <b>University of Exeter</b>  <b>University of Glasgow</b>            University of Kent  <b>University of Leeds</b>            University of Leicester            University of Lincoln            University of Liverpool  <b>University of Loughborough</b>  <b>University of Manchester</b>            University of Newcastle            University of Northampton            University of Nottingham            University of Plymouth            University of Portsmouth            University of Reading  <b>University of St. Andrews</b>  <b>University of Salford</b>  <b>University of Sheffield</b>            University of Southampton            University of Stirling  <b>University of Surrey</b>  <b>University of Sussex</b>            University of the Arts London            University of the West of England  <b>University of Warwick</b>            University of West London            University of Westminster            University of Wolverhampton  <b>University of York</b></p>	<p><b>Detroit Institute of Music Education</b>            Drexel University            Duquesne University            Eckerd College            Emerson College            Emmanuel College            Emory University            Fairfield University            Florida Institute of Technology            Fordham University            Georgia Institute of Technology            Hult International Business School            Indiana University at Bloomington            Jacksonville University            La Salle University            Loyola Marymount University            Loyola University Chicago            Lynn University            Marist College            Merrimack College  <b>New York University</b>            North Carolina State University            Northeastern University            Oregon State University            Pace University            Pennsylvania State University            Pepperdine University            Pitzer College            Pratt Institute            Purdue University            Quinnipiac University            Rensselaer Polytechnic Institute            Rhode Island School of Design  <b>Ringling College of Art and Design</b>            Rochester Institute of Technology  <b>Rollins College</b>            Rose-Hulman Institute of Technology            Santa Clara University            Savannah College of Art and Design            Seattle University            Seton Hall University            Sheridan College – Davis Campus            Southern Methodist University  <b>Stanford University</b>            Suffolk University            Syracuse University            Temple University            Texas Christian University            Texas State University            The George Washington University            The New School            The University of North Carolina at Chapel Hill            The University of Oklahoma            The University of Texas, Austin            University at Buffalo (SUNY Buffalo)            University of California, San Diego            University of California, Irvine            University of California, Los Angeles            University of California, San Diego            University of California, Santa Barbara            University of California, Santa Cruz            University of Connecticut            University of Delaware            University of Maine            University of Maryland, College Park            University of Massachusetts, Amherst            University of Massachusetts, Boston            University of Michigan            University of New Hampshire at Durham            University of North Carolina at Wilmington            University of Oregon            University of Rhode Island            University of San Francisco            University of Southern California            University of Virginia – Main Campus            University of Washington            Villanova University            West Virginia University            Wheeling Jesuit University            Worcester Polytechnic Institute  <b>Yale University</b></p>
 <p><b>AUSTRIA</b>            Vienna University of Economics and Business</p>	 <p><b>NORWAY</b>            The Norwegian University of Science and Technology</p>		
 <p><b>CANADA</b>            Bishop's University            Brock University            Dalhousie University            Emily Carr University of Art and Design            Laurentian University  <b>McGill University</b>            McMaster University            Ontario College of Art &amp; Design (OCAD)            Ontario Tech University (Faculty of Engineering and Applied Science)            Queen's University            Ryerson University            Simon Fraser University            University of British Columbia            University of Calgary            University of Ottawa            University of Toronto            University of Waterloo            Western University            Wilfrid Laurier University            York University</p>	 <p><b>SPAIN</b>  <b>ESADE Business School</b>            European University of Madrid  <b>IE University</b>            Universidad de Navarra</p>		
 <p><b>DENMARK</b>            Copenhagen Business School  <b>University of Southern Denmark</b></p>	 <p><b>SWEDEN</b>            Chalmers University of Technology  <b>Luleå University of Technology</b></p>		
 <p><b>FINLAND</b>            Hanken School of Economics</p>	 <p><b>SWITZERLAND</b>            École hôtelière de Lausanne  <b>ETH Zurich</b>  <b>European Business School Geneva</b>  <b>Franklin University Switzerland</b>  <b>University of Lucerne</b>  <b>University of St. Gallen</b>  <b>University of Zurich</b>            Webster University Geneva</p>		
 <p><b>FRANCE</b>  <b>ESCP – Paris</b>            Le Cordon Bleu Paris            Sciences Po – Columbia University Dual BA Program            The American University of Paris</p>	 <p><b>UNITED KINGDOM</b>  <b>Abertay University</b>            Aberystwyth University            Anglia Ruskin University            Arts University Bournemouth            Aston University            Bangor University            Bath Spa University            Bournemouth University            Brunel University London  <b>Cardiff University</b>            City, University of London  <b>Coventry University</b>  <b>Durham University</b>            Exeter College            Glasgow Caledonian University            Goldsmiths, University of London            Heriot-Watt University  <b>Imperial College London</b>            Keele University            King's College London            Lancaster University            Leeds Beckett University</p>		
 <p><b>GERMANY</b>            Bonn-Rhein-Sieg University of Applied Sciences            Clausthal University of Technology            EU Business School – Munich  <b>Ludwig Maximilian University of Munich</b>  <b>Mittweida University of Applied Sciences</b>            Rheinisch-Westfälische Technische Hochschule Aachen</p>		 <p><b>UNITED STATES OF AMERICA</b>            American University            Appalachian State University            Arizona State University            Babson College            Benedictine University, Illinois            Bentley University            Boston College            Boston University            Bryant University            California College of the Arts, San Francisco            Carnegie Mellon University  <b>College of William and Mary</b>            Colorado College            Colorado State University            DePaul University</p>	
 <p><b>HUNGARY</b>  <b>Semmelweis University of Medical Sciences</b></p>	 <p><b>ISRAEL</b>            IDC Herzliya-Raphael Recanati International School</p>		
 <p><b>ITALY</b>            Universita Bocconi</p>			
 <p><b>JAPAN</b>            Sophia University</p>			