

2020-2021

# SCHOOL OPENING & SAFETY PLAN



# TABLE OF CONTENTS

2	Table of Contents
3	Timeline
4-5	What to Expect Returning to School
6	Frequently Asked Questions About Return to School
7	Other Safety Considerations

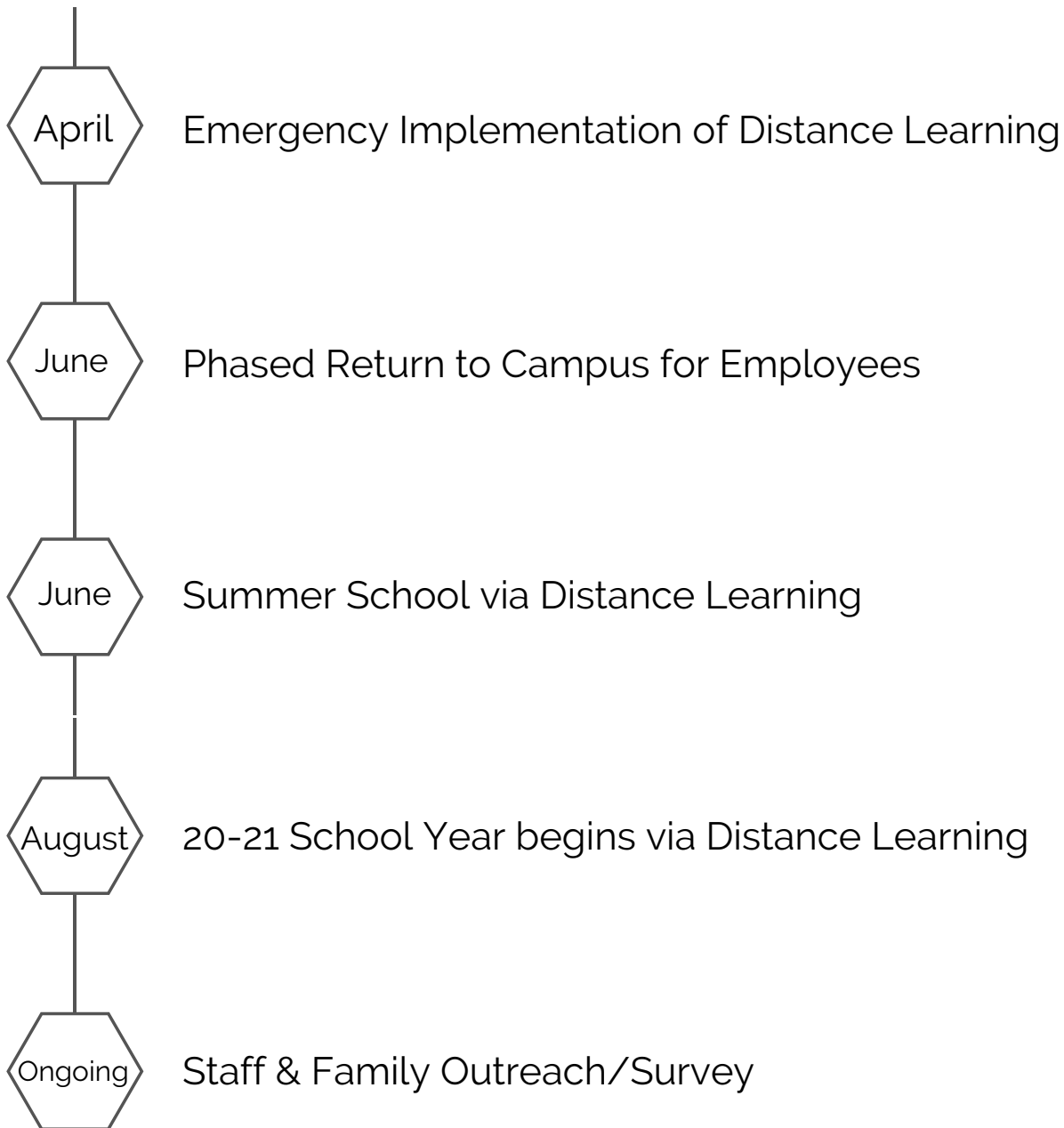
"ENSURING  
THE  
CONTINUITY  
OF LEARNING  
WHILE  
MITIGATING  
THE SPREAD  
OF COVID-19"

8	On Campus & In the Classroom
9	Students with Disabilities
10	Educational Models
11-12	Sample Bell Schedules
13	Social Emotional Supports
14	Sports & Extra Curricular



# TIMELINE

---



# EDUCATIONAL MODELS

Over the summer, staff, including teachers, and site and district administrators, have been busy working to develop instructional delivery models that support the broad span of needs for our students and align with the current legislative requirements while meeting current physical distancing and other health requirements. Based on current guidance from the Department of Public Health, the District will be starting off the 2020-21 school year in the "At-Home" Distance Learning model.

Once state and county officials determine that the District can resume in-person instruction, we are prepared to offer options for families to consider. Sample of bell schedules for each model are provided in subsequent pages. These schedules are designed to allow flexibility for parents and students to either be on campus or learn from home while still having live interaction with their teachers.

2020-2021  
SCHOOL YEAR

## Learning Model Options for Families

### AT- SCHOOL LEARNING (BLENDED)

- Blend of in-person & at-home learning
- Students cohorted in two groups
- 6 courses per semester
- General Education and Resource students will attend 2 days per week
- Students participating in a Special Day Class Program will attend 4 days per week

### AT-HOME LEARNING

#### DISTANCE LEARNING

- Enrolled through current school site
- 100% Virtual
- 6 courses per semester
- Afternoon online access and support from teachers
- Ability to move to "At-School Learning" Model

#### INDEPENDENT STUDY

- Check-in with assigned teacher 1x weekly
- 2 courses at a time
- Variable credit
- Requires separate enrollment

#### AVUHSD AAV VIRTUAL SCHOOL

- 100% Virtual
- 6 courses per semester
- Traditional course schedule
- Availability of in-person office hours with teacher
- Requires separate enrollment



ANTELOPE VALLEY UNION  
HIGH SCHOOL DISTRICT



# SAMPLE BELL SCHEDULE FOR "AT-HOME" LEARNING

In the At-Home Learning model shown below, students would receive all instruction/assignments virtually. Students will be assigned to a group (Group A or B) solely for the purpose of allowing a seamless transition should preferences change to an "At-School Learning Model".

As an example, an "At-Home Learning" student's week would include:

- On Mondays and Thursdays, students will have online access to Periods 1, 2, and 3 from home.
  - Teachers will live-stream their in-person classroom.
  - Assignments will be posted in the Google classroom.
- On Tuesdays and Fridays, students will have online access to Periods 4, 5, and 6 from home.
  - Teachers will live-stream their in-person classroom.
  - Assignments will be posted in the Google classroom.
- On Wednesday, students will log on to their Google classroom for all 6 classes to receive instruction/ tasks for that day
- Monday through Friday, students will be able to receive meal service through the "Grab and Go" style of service we have hosted throughout the physical closures of our campuses.
- For students receiving special education services, an Individualized Educational Plan (IEP) meeting must be held to determine the appropriateness of this learning model. Additional information is forthcoming.

At-Home Learning- Distance Learning																																										
Start Time	End Time	Monday	Tuesday	Wednesday			Thursday	Friday																																		
7:30	8:50	Period 1	Period 4	<table><tr><th>Start Time</th><th>End Time</th><th></th></tr><tr><td>7:30</td><td>8:05</td><td>Period 1</td></tr><tr><td>8:05</td><td>8:15</td><td>Break</td></tr><tr><td>8:15</td><td>8:50</td><td>Period 2</td></tr><tr><td>8:50</td><td>9:00</td><td>Break</td></tr><tr><td>9:00</td><td>9:35</td><td>Period 3</td></tr><tr><td>9:35</td><td>9:45</td><td>Break</td></tr><tr><td>9:45</td><td>10:20</td><td>Period 4</td></tr><tr><td>10:20</td><td>10:30</td><td>Break</td></tr><tr><td>10:30</td><td>11:05</td><td>Period 5</td></tr><tr><td>11:05</td><td>11:15</td><td>Break</td></tr><tr><td>11:15</td><td>11:50</td><td>Period 6</td></tr></table>	Start Time	End Time		7:30	8:05	Period 1	8:05	8:15	Break	8:15	8:50	Period 2	8:50	9:00	Break	9:00	9:35	Period 3	9:35	9:45	Break	9:45	10:20	Period 4	10:20	10:30	Break	10:30	11:05	Period 5	11:05	11:15	Break	11:15	11:50	Period 6	Period 1	Period 4
Start Time	End Time																																									
7:30	8:05	Period 1																																								
8:05	8:15	Break																																								
8:15	8:50	Period 2																																								
8:50	9:00	Break																																								
9:00	9:35	Period 3																																								
9:35	9:45	Break																																								
9:45	10:20	Period 4																																								
10:20	10:30	Break																																								
10:30	11:05	Period 5																																								
11:05	11:15	Break																																								
11:15	11:50	Period 6																																								
8:50	9:00	Break		Break																																						
9:05	10:25	Period 2	Period 5	Period 2	Period 5																																					
		Break		Break																																						
10:25	10:35	Break		Break																																						
10:40	12:00	Period 3	Period 6	Period 3	Period 6																																					
		Break		Break																																						
		Period 5		Period 5																																						
		Break		Break																																						
12:00	1:00	Lunch/ Transition Time																																								
1:00	3:00	Online (Virtual) Access to Teachers																																								

# SAMPLE BELL SCHEDULE FOR "AT-SCHOOL" LEARNING

In the "At-School Learning" Blended Model depicted below, students will be assigned to either Group A or Group B. Group A students will attend school physically on Mondays and Tuesdays. Group B students will attend school physically on Thursdays and Fridays. We understand that several families have younger siblings attending neighboring districts, and while we cannot guarantee the coordination of schedules, we will do our best.

As an example, a Group A student's week would include:

- Attend 3 classes on Monday (Periods 1, 2, 3) in person with their assigned teacher
- Attend 3 classes on Tuesday (Periods 4, 5, 6) in person with their assigned teacher
- Students will be provided a "Grab and Go" lunch as they leave campus for that day.
- On Wednesday, students will log on to their Google classroom for all 6 classes to receive instruction/ tasks for that day.
- On Thursdays, students will have online access to Periods 1, 2, and 3 from home.
  - Teachers will live-stream their in-person classroom.
  - Assignments will be posted in the Google classroom.
- On Fridays, students will have online access to Periods 4, 5, and 6 from home.
  - Teachers will live-stream their in-person classroom.
  - Assignments will be posted in the Google classroom.
- On Wednesday- Friday, students will be able to receive meal service through the "Grab and Go" style of service we have hosted throughout the physical closures of our campuses.

Group B students will participate virtually on Mondays and Tuesdays. They will log into their Google classrooms on Wednesday for instruction. On Thursdays and Fridays, students will attend classes in-person with their assigned teachers.

At-School Learning- Blended Model									
Group A/ B									
Start Time	End Time	Monday	Tuesday	Wednesday			Thursday	Friday	
7:30	8:50	Period 1	Period 4				Period 1	Period 4	
Group A		In-Person	In-Person	Start Time	End Time		Log-in to Class Virtually	Log-in to Class Virtually	
Group B		Log-in to Class Virtually	Log-in to Class Virtually				7:30	8:05	Period 1
					8:05	8:15	Break		
8:50	9:00	Break		8:15	8:50	Period 2	Break		
9:05	10:25	Period 2	Period 5				Period 2	Period 5	
Group A		In-Person	In-Person	8:50	9:00	Break	Log-in to Class Virtually	Log-in to Class Virtually	
Group B		Log-in to Class Virtually	Log-in to Class Virtually				9:00	9:35	Period 3
					9:35	9:45	Break		
				9:45	10:20	Period 4			
10:25	10:35	Break		10:20	10:30	Break	Break		
10:40	12:00	Period 3	Period 6				Period 3	Period 6	
Group A		In-Person	In-Person	10:30	11:05	Period 5	Log-in to Class Virtually	Log-in to Class Virtually	
Group B		Log-in to Class Virtually	Log-in to Class Virtually				11:05	11:15	Break
					11:15	11:50	Period 6		
12:00	1:00	Lunch/ Transition Time							
1:00	3:00	Online (Virtual) Access to Teachers							

# WHAT FAMILIES CAN EXPECT AS SCHOOL REOPENS

The health and safety of our students, staff and families is of the utmost importance. When the 2020-21 school year begins, on-campus school will look much different than in previous years due to the new health and safety measures being implemented. This plan to reopen is based on current guidance from public health officials and state agencies and may change as the situation evolves. It is important to note that the District will focus sharply on academic instruction to enhance student performance and address learning loss. At the same time, when practical, AVUHSD is committed to maintaining the extracurricular programs, clubs, and athletics which are paramount to the physical, mental and social well-being of our students.



## Screening at Home

Parents are responsible for taking their student's temperatures. Students are recommended to take temperatures daily and to monitor for symptoms of illness before getting to school. Anyone with a fever of 100.4°F or higher should not go to a school site. Personal illness, quarantine, and COVID-19 illness or symptom related absences will be excused.

Students and adults are recommended to self-screen for respiratory symptoms such as cough and shortness of breath prior to coming to school each day. Students and adults experiencing those symptoms should stay home and not go to a school site.

# WHAT FAMILIES CAN EXPECT AS SCHOOL REOPENS

## Arriving at School

- Students and staff members will be required to wear a face covering.
- Parents and visitors will have limited access to the school campus.
- School sites will designate routes for entry and exit in order to limit direct contact with others.
- School sites will have signage throughout the campus to remind students and staff about physical distancing, hand washing and wearing a face covering.
- The District is committed to securing additional safety equipment such as student partitions, as supply chain allows.



In accordance with the California Department of Public Health's (CDPH) Guidance for Face Coverings:

- Students must utilize face coverings while:
  - In the classroom
  - Waiting to enter campusOn school grounds (except when eating or drinking)
  - Exiting the school grounds
  - On the bus
- PPE will be provided to staff and students.
- Students and staff will be provided reusable cloth face masks and are expected to wear them daily.
- Personal face coverings will be allowed in compliance with dress code policy.



# FREQUENTLY ASKED QUESTIONS ABOUT RETURN TO SCHOOL

**Q: What happens if student(s) develop symptoms on campus?**

**A:** A designated symptom room will be available for any student who develops COVID-19 related symptoms. They will be supervised by staff while they await for their parent(s) to pick them up. Those student(s) would be quarantined consistent with DPH directives.

**Q: What happens if an adult visitor screens positive or reports symptoms?**


**A:** Any individual who reports symptoms consistent with COVID-19 will be directed to return home and self-isolate. The COVID-19 Compliance Team will be notified and they will follow up to ensure the School Exposure Management Protocol is initiated consistent with Department of Public Health directives.

**Q: Who to contact should student(s) report symptoms or exposure?**

**A:** Parents should contact site administration if their child is reporting symptoms consistent with COVID-19. A site nurse will then contact them to assess them consistent with Department of Public Health directives.

**Q: Where can I go to test if my student develops symptoms or is exposed?**

**A:** The Los Angeles County and the Department of Public Health offer many free testing sites throughout the County. You can seek your student's medical health care provider's recommendation.



- If you do have to visit your student's campus, please ensure that your party is limited to you and your student only.
- Ensure that you have a face covering when coming on campuses.
- Maintain physical distancing while on school campuses.
- Ensure emergency contacts are updated

# SAFETY CONSIDERATIONS

---

- Campuses will follow guidelines developed by CDPH for cleaning, disinfection, and ventilation of school campuses.
- Common touch surfaces will be cleaned regularly (counter tops, door handles, restrooms, student desks, student chairs, etc.).
- Physical barriers/Partitions will be installed in high traffic areas where face-to-face interaction with the public occurs frequently.
- Staff and students will be expected to wash/sanitize their hands regularly.
- Every classroom will be provided hand sanitizer for use.
- Schools will limit sharing of supplies between students to the extent possible and encourage students to take home personal items for cleaning daily.
- Signage will promote healthy hygiene practices and reminders to stay home when ill.
- Student common areas will be regularly inspected and cleaned for use.

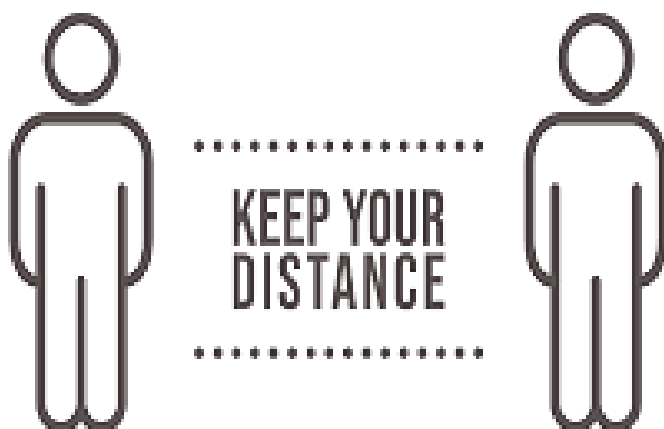


# SAFETY CONSIDERATIONS ON CAMPUS & IN THE CLASSROOM

---

Physical distancing will limit the spread of the virus. Schools will adhere to the following strategies to maintain physical distancing as much as possible:

- During regular school hours, school sites will restrict non-essential visitors, volunteers and activities involving other groups.
- Limit group activities wherever practicable (assemblies, award ceremonies, athletics).
- Classroom space will be arranged to remove non-essential furniture and items, allowing maximum space for students and staff.
- Student desks will be arranged to face the same direction (rather than facing each other) and be spaced six feet apart from other students and teachers. and be spaced six feet from teachers.
- Routes will be designated for entry and exit to lunch, break, and other transition times, as feasible.
- Food Services will serve individually plated or boxed meals.



# EXPOSURE MANAGEMENT PLAN

## COUNTY OF LOS ANGELES DEPARTMENT OF PUBLIC HEALTH ORDER OF THE HEALTH OFFICER



### Protocol for COVID-19 Exposure Management Plan in K-12 Schools

**NOTE:** This protocol document may be updated as additional information and resources become available. Check the Los Angeles County Department of Public Health website: <http://www.ph.lacounty.gov/media/Coronavirus/> for updates to this document.

A targeted public health response to contain COVID-19 exposures at a community-level can help maximize the impact of the Los Angeles County Department of Public Health (DPH) COVID-19 response.

Primary and Secondary Schools serving students from Kindergarten through Grade 12 (K-12 Schools) are trusted community partners that can help DPH improve the timeliness and impact of the Public Health response through rapid initiation of a COVID-19 Exposure Management Plan (EMP) when notified of COVID-19 cases and clusters at school. The School EMP can be implemented before COVID-19 case reports are received by DPH, thereby accelerating the ability to contain spread of COVID-19 and prevent school outbreaks from happening.

The steps for exposure management of 1, 2, and 3 or more COVID-19 cases at K-12 Schools are described below and summarized in Appendix A. Because K-12 Schools will vary in the level of resources for COVID-19 exposure management, *required* steps are the minimum required elements that should be included in the School EMP. *Recommended* steps include elements for localized management of exposures where school resources are available.

#### Exposure Management Planning Prior to 1 COVID-19 Case at School

- **Required:** A designated School COVID-19 Compliance Task Force that is responsible for establishing and enforcing all COVID-19 safety protocols and ensuring that staff and students receive education about COVID-19. A designated COVID-19 Compliance Officer who serves as a liaison to DPH in the event of a COVID-19 cluster or outbreak at the setting.
- **Required:** A plan for all students and employees who are suspected to have COVID-19 or are quarantined because of exposure to case(s) at school to have access to testing or be tested for COVID-19.

#### Exposure Management for 1 COVID-19 Case at School

- **Required:** If school is notified of 1 confirmed case (student or employee), School Compliance Task Force requests that the case follow Home Isolation Instructions for COVID-19 ([www.publichealth.lacounty.gov/acd/ncorona\\_2019/covidisolation/](http://www.publichealth.lacounty.gov/acd/ncorona_2019/covidisolation/)).
- **Required:** School Compliance Task Force informs the case that DPH will follow-up directly with the case through the DPH Case and Contact Investigation Program to collect additional information and issue the Health Officer Order for Case Isolation.

**Click [HERE](#) for the complete document.**





# STUDENTS WITH DISABILITIES

---

## Safety Considerations

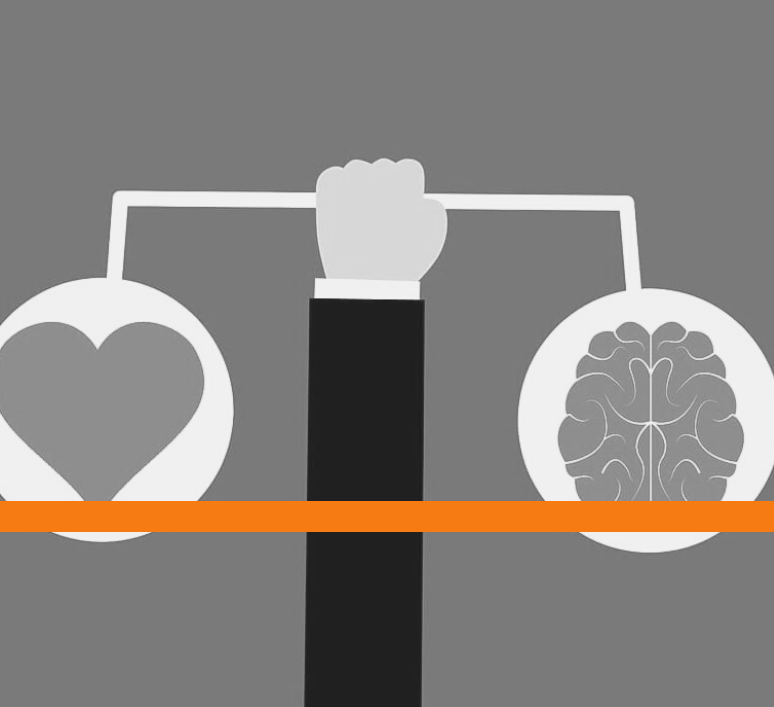
- Students with specific medical conditions that are unable to wear facial coverings will not be required to do so.
- Students who are deaf-hard of hearing will be provided modified PPE if feasible. If modified PPE is unavailable, they will be encouraged but not be required to wear facial coverings.
- Students who have an Individualized Education Plan (IEP) will be offered the opportunity to learn virtually if requested by the student's parent/guardian. An IEP meeting will be scheduled in order to discuss the most appropriate program model.

## Staff Considerations

- Staff will be provided a face covering which is most conducive and appropriate for addressing their specific student needs.
- IEP services will be delivered with adherence to physical distancing, the wearing of facial coverings, increased hand washing, and sanitizing surfaces.
- Staff who work with students who require modeling or oral tasks to complete work will be issued a face shield so students are able to view their instructor. the employee.

## Transportation

- Students will fill the vehicle from back to front. Vehicles will be cleaned and disinfected at the end of each route.
- Students and Driver will be required to wear face coverings.
- Students will practice physical distancing to the best extent possible.
- Should a student become ill while in transit, they will be isolated in a dedicated seat directly behind the driver.



# SOCIAL EMOTIONAL SUPPORTS

## Resources

District and school site staff are committed to supporting students' social emotional wellness and offering resources to ensure students transition back to school smoothly. Our dedicated Counselors, Psychologists, Therapists, Social Workers, and School-Based Mental Health agency partners are ready to provide direct and virtual support to those students in need, as well as providing resources upon parent request. Support may include social emotional learning, building relationships, community building activities, and increased access to mental health/wellness services. Families and schools will need to work together to check how students are feeling and assess their individual needs to provide the support our students need during these challenging times.

The screenshot shows the website for the Antelope Valley Union High School District. The top navigation bar includes links for ABOUT, SCHOOLS, ACADEMICS, PARENTS, and COMMUNITY. The COMMUNITY section is active. On the left, a sidebar menu lists various community resources, with 'Community Resources' highlighted. The main content area, titled 'COMMUNITY RESOURCE INFORMATION', lists several resources with expandable icons (+):

- AVUHS D SCHOOL SITE CONTACT INFORMATION
- CRISIS SERVICES AND HOTLINES
- RESOURCES FOR SEXUAL ABUSE
- DISTRICT COUNSELING SERVICES
- SCHOOL-BASED MENTAL HEALTH SERVICES
- COMMUNITY MENTAL HEALTH SERVICES
- LGBTQ RESOURCES
- OTHER COMMUNITY MENTAL HEALTH RESOURCES
- RESOURCES FOR TOBACCO, DRUG OR ALCOHOL ABUSE
- GOVERNMENT AGENCIES
- AV CLINICS & PRENATAL/ PREGNANCY RESOURCES
- ADULT AND EMANCIPATED YOUTH SERVICES



# SPORTS & ACTIVITIES

The AVUHSD will adhere to guidance by the State and County with regards to gatherings. Our Extracurricular Athletics and Activities programs have adopted a three phases approach that will evolve or retract as LA County evolves or retracts. Any and all groups, AVUHSD and outside groups using AVUHSD facilities will agree to the guidelines provided.

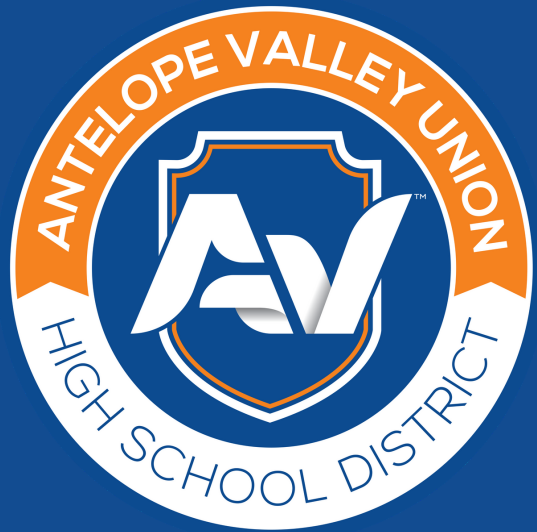
The AVUHSD's plan for athletic participation is based on guidance from our partner agencies and institutions (CDE, LACOE, CDC, LA County Dept. Heath, CIF State, CIFSS, NFHS, Golden League Athletic Council). Our conviction is that high school students have benefitted in countless ways from high school-sponsored athletics and activities since the very founding of CIF in 1913 and that these benefits have not gone away with the outbreak of COVID-19. The physical activity and training that comes with athletics and activities are essential components to the physical, mental, and social well-being of students. We believe an essential part of educating the "whole-child" is to develop a plan for athletics to resume in the 2020-2021 school year.

The AVUHSD is continually working with Golden League Athletic Directors and with the Golden League Athletic Council (GLAC), which has formed sport-specific ad-hoc committees to develop appropriate "return plans" for each specific sport in regard to facilities, practice, competition, and travel protocols.

The purpose of these reopening guidelines for our athletic and activities departments in the AVUHSD is to ensure the safest environment and best possible care is being provided for our students who choose to return and participate in these activities.

## AVUHSD Mandated Return to Athletics & Activities Training





PARENTS/GUARDIANS WITH QUESTIONS:

**EMAIL:**

**info@avhsd.org**

STAFF QUESTIONS WITH QUESTIONS:

**EMAIL:**

**HRQUESTIONS@avhsd.org**