

CHARLES P. MURRAY MIDDLE SCHOOL

POWER IN CHANGE

2020-2021

*Murray Return to Plan B Town Hall Meeting
October 6, 2020*



Town Hall Agenda

- » Introduction
- » Keeping Our Falcon Family Safe
- » Plan B Scheduling
- » Logistics and Procedures



Welcome! We are excited to see students on October 12th or 15th!

- » Please submit questions throughout the Google Form during the meeting
- » Please keep your mic muted throughout the initial presentation. We will open it up for questions following initial presentation.



Please Prepare Your Child for Changes in On Our School

- » New traffic patterns in the hallways.
- » Markings on the floor for social distancing
- » Students and staff wearing face coverings
- » Smaller class sizes
- » No sharing of materials
- » Water fountains for filling only



How are we cleaning the building?

- » Between each group of students, all desks and chairs are being cleaned with “QT Plus 24”
- » On Wednesday mornings and Friday nights, the custodial team is deep cleaning the building with a “QT Mist” – a more potent form of the “QT Plus”
 - All rooms are misted, every surface receives a mist of the disinfectant.

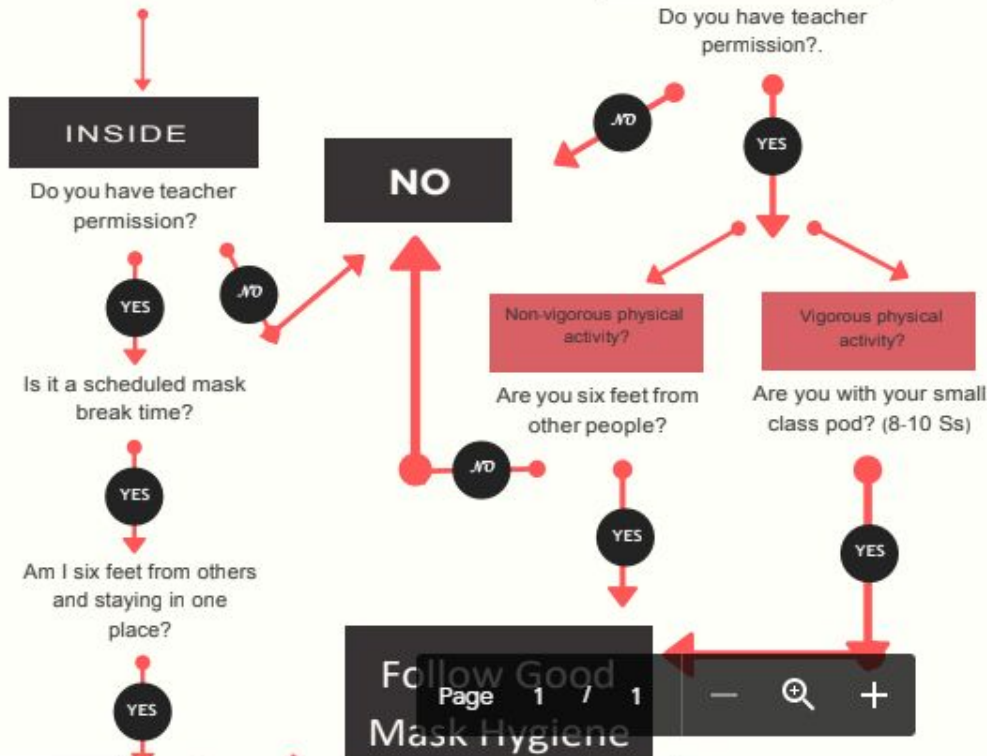
Face Coverings/Masks

- ❑ **Wear all day**
 - ❑ **If a student is unable to wear their mask, or keep it on appropriately, they will be asked to work 100% remote.**
- ❑ **Masks Breaks**
 - ❑ **Scheduled**
 - ❑ **Time Limit**
 - ❑ **Distance**
- ❑ **If they take their masks off, they must be stored in a hygienic manner**
 - ❑ **Lanyards recommended**
 - ❑ **Brown paper bags will be provided**

Can I Take My Mask Off?

WHERE
ARE
YOU?

A GUIDE FOR STUDENTS



Examples of Non-Vigorous Activity
(take mask off - stay 6 feetaway!!)

Walk the track/field
Jump Rope
Four-square
Hula Hoop
Yoga

Examples of Vigorous Activity
(take mask off, stay with your pod)

Basketball
Soccer (no hands)
Relay Races
Frisbee

What happens if a student is sick during the day?

- If a student begins to display symptoms during the school day, they are sent to “**The Aviary.**” This is an isolated area in our building. The nurse or a trained staff member meets the student to complete an assessment. The student remains isolated until a guardian can come to pick them up.
- The Aviary is separate from the nurse’s station. We do not want to infect otherwise healthy students.

Will we be notified if a staff/student has a positive diagnosis?

- Yes, the entire school community will be notified if there is a positive diagnosis in our building – through an email and phone call.
- **Those students and staff that share instructional space with the confirmed case at any time during the day will be notified with a phone call from an administrator or the school nurse.**
- At this time, depending on contact tracing discovery, students and staff will be notified if they have to quarantine and for how long.
- **Staff and students will ONLY have to quarantine if the positive case was closer than 6 ft to others for longer than 15 minutes with no face covering. If the “Three W’s” are followed, only the positive case has to quarantine.**

Please Help Us Reinforce...

- Transition times are not social times – they can walk and socialize during walk times. Transitions times should be students moving from point A to point B quickly.
- Masks must be worn properly ALL DAY while inside
- We can't drink directly from water fountains
 - We will have small cups for water available
 - Personal bottles are recommended
- Attending Zoom meetings while remote is not optional.

Limited Access to Building

- At this time we are unable to have volunteers
- Please do not drop off items for students. All students currently have access to free lunch
- We ask that you do not check students out early.
- If checking out is necessary we ask that:
 - All parents must be screened and must wear a face covering before entering
 - You will be asked to wait in the lobby or outside
 - Please call ahead if checking out a student.

Screening upon arrival

- Students will be screened before exiting the bus or car
 - Here is a video of the process for car riders
 - Temperature Taken
 - 3 Questions Asked:
 - i. **Exposure:** Have you had close contact (within 6 feet for at least 15 minutes) in the last 14 days with someone diagnosed with COVID-19, or has any health department or health care provider been in contact with you and advised you to quarantine?
 - ii. **Symptoms:** Since you were last at school, have you had any of these symptoms?
 - Fever
 - Chills
 - Shortness of breath or difficulty breathing
 - New cough
 - New loss of taste or smell
 - iii. **Diagnosis:** Since you were last at school, have you been diagnosed with COVID-19?

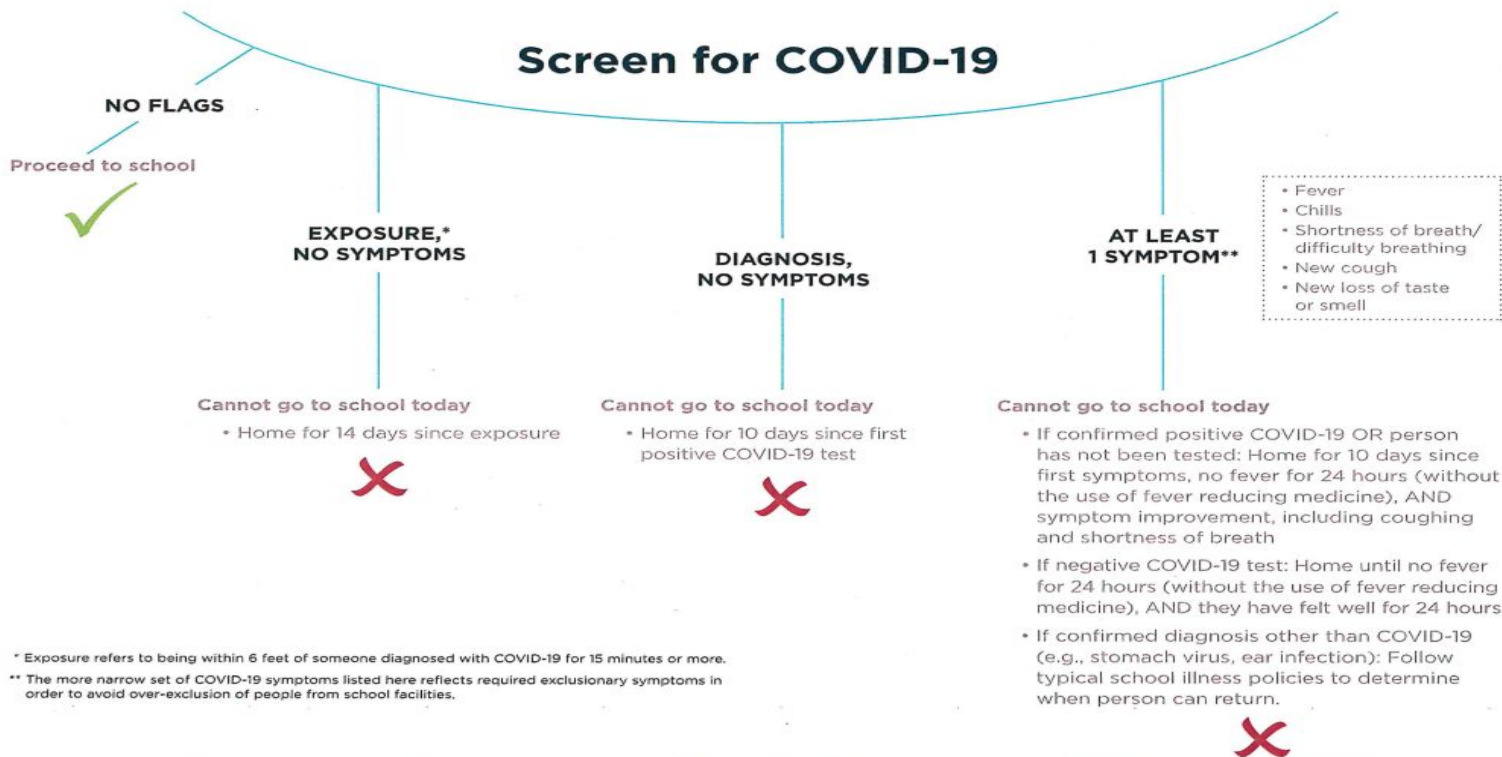
Screening upon arrival

- If the temp is below 100.3 AND they answer “NO” to all three questions, students will proceed directly to homeroom.
- If the temp is above 100.3 OR they answer “YES” to any of the three questions, they must be returned home if a car rider or referred directly to the nurse for secondary screening and assessment for a bus rider.
- Students will NOT be allowed to depart their car prior to 7:55. Please wait in your vehicle for a screener to come to you.



Screening Flow Chart

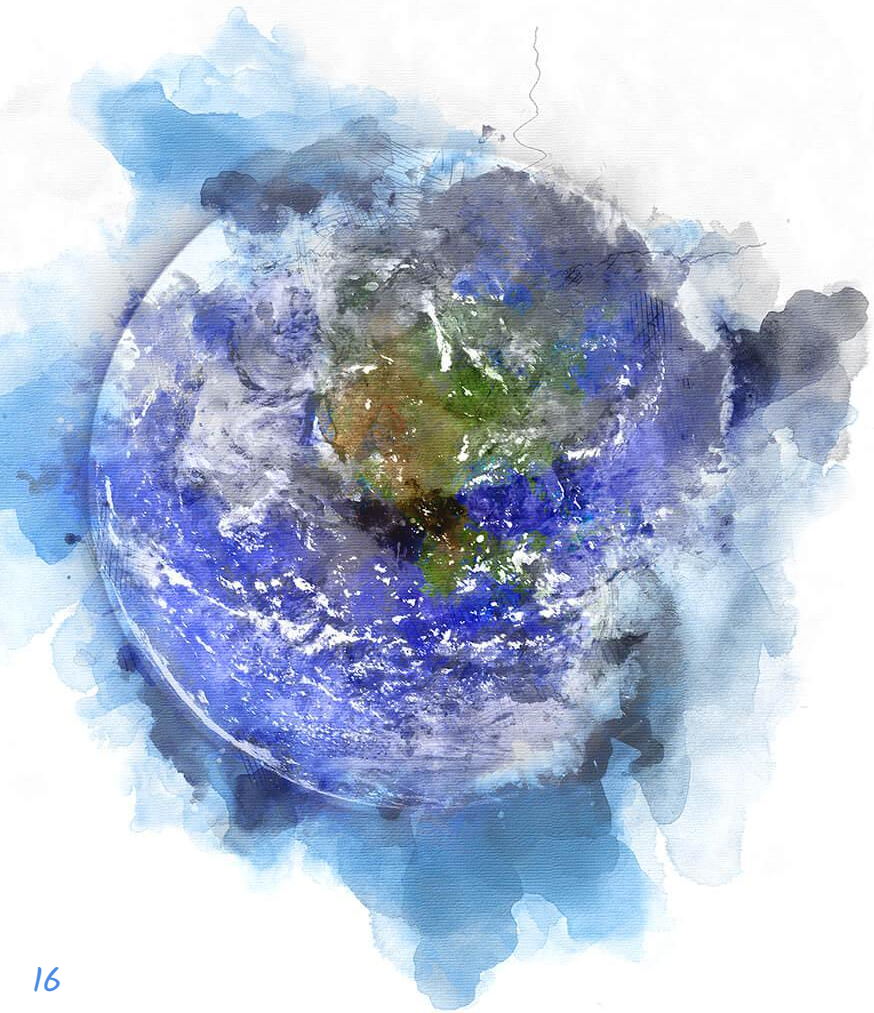
For step-by-step instructions for school personnel, review the [Reference Guide for Suspected, Presumptive, or Confirmed Cases of COVID-19 \(K-12\)](#)



Daily Schedule for F2F or Remote

» Murray Plan B AA/BB Schedule

- Group AA will report to school on Mondays/Tuesdays
 - ALL students are remote on Wednesdays
 - Group BB will report to school on Thursdays/Fridays
 - Students are expected to complete remote work and attend Zooms on the days they are not face to face.
- » Students who are remote should check the teacher's Google Classroom for Zoom times.
- » Students will not be able to be able to arrive at school until 7:55 am.
- » Students will be considered tardy if they arrive after 8:30 am.



Social and Emotional Learning

- Morning Meeting

- ✧ ➤ On Wednesdays groups will continue to have Synchronous SEL Lessons
- Students should log onto their Zoom call from 8:30-9:10.

Recess and Lunch

- Lunch will be in classrooms or outside at picnic tables/on a beach towel.
 - We still must comply with >15 minute of mask removal time to ensure the whole class does not have to quarantine
 - We will have slower eaters move to a separate location after 15 minutes to finish eating
- Recess – Following NCHSAA Recommendations
- Classes must remain together as a “pod”
- The “pod” can play vigorous activities together – but other pods CANNOT join



Dismissal

- » Students will remain in class until dismissed to assist with social distancing
- » Walkers, Bus Riders, and Car Riders will be called.
- » Car Riders please have your student's name displayed largely in in the car window.

School Supplies Requested

- Reminder – community supplies are not allowed during this time – students must have their own supplies.
- If you are NOT able to provide the supplies, please complete this survey – we are working with community members and PTA to ensure every student has necessary supplies.
- No lockers will be used, students will carry their supplies and backpacks with them throughout the day.

Supplies Requested

- » Bookbag
- » Notebooks
- » A pencil box
- » Pencils and Pens
- » A personal pencil sharpener
- » Headphones (with a round jack – wireless is NOT recommended)
- » Personal Water Bottle
- » Personal Hand Sanitizer
- » Mask, and a backup mask in a ziplock bag

Devices

- ❑ Students with school loaned devices **SHOULD** bring them on their Face to Face days.
- ❑ Students with personal devices can choose to bring their devices or not bring their device.
- ❑ Devices are **NOT** required on F2F days – teachers will be using a combination of print materials and online materials.

What will attendance look like?

- Homeroom teachers will take attendance daily during Homeroom (Core 1) between 8:30–9:10 and enter attendance in PowerSchool.
- Students who are working remotely or through Virtual Academy should complete the attendance question each day before 9:10, attend zoom calls, and complete independent work.
- We will send out a phone call daily at 11 am to notify parents that their child has marked absent during homeroom.
- Students will be marked Present on Site, Present off Site, or Absent.

What will grading and feedback look like?

- » Grading will be as close to what it was before we started remote learning. Number grades will be provided on assignments required.
- » Feedback will be provided by the teachers throughout the learning process. They can comment on work completed and return to students through Google Classroom.
- » Grades will be updated weekly in PowerSchool.

What will instruction look like?

- NHCS is committed to providing synchronous instruction daily on Zoom at the same time that students receive face to face instruction.
- Teachers will provide opportunities for all students that align to state standards and provide rigor.
- Teachers will provide families with Zoom times and links.

A watercolor illustration on the left side of the slide. It depicts a pair of hands, rendered in warm, earthy tones of brown and orange, cupping a mound of dark, rich soil. A small, vibrant green seedling with several leaves is growing out of the center of the soil. The background around the hands and soil is a soft, abstract wash of light green and blue, suggesting a natural, outdoor setting.

Plan for Virtual Academy

- Requires a quarterly commitment, application, and acceptance
- Students will continue work through modules in Edgenuity
- Teachers will providing a Week at a Glance for students
- Virtual Academy Coordinators (VAC) will provide a progress report on Monday.
- If your child is missing any courses in Edgenuity or if you do not know who your VAC is, please notify the school.

Questions





Free templates for all your presentation needs



For PowerPoint and
Google Slides



100% free for personal
or commercial use



Ready to use,
professional and
customizable



Blow your audience
away with attractive
visuals