

WHAT GREAT MINDS CAN DO

FASTFACTS

HISTORY

Founded: 1856 by Bishop James Roosevelt Bayley
Namesake: Elizabeth Ann Seton,
first American-born saint
Affiliation: Catholic, one of the oldest
diocesan universities in the U.S.
Location: Suburban setting, South Orange,
New Jersey, 30 minutes from New York City

ACADEMICS

Majors and Programs: 90+
Average Class Size: 21
Student-to-Faculty Ratio: 14:1
Internship Opportunities: 17,000+
Students in Internships: 81%
Employment Rate: 93%
Mid-Career Earnings: 50% higher than
national average

STUDENT LIFE

Student Organizations: 130+
Greek Societies: 22

APPLICATION PROFILE

Average GPA: 3.6
Average SAT: 1235
Average ACT: 26.5

IMPORTANT CODES

SAT: 2811 | ACT: 2606 | FAFSA: 002632

STUDENT PROFILE

Undergraduate Enrollment: 6,200
Freshmen Living on Campus: 80%
Diversity Rate: 45%
States Represented: 50
Countries Represented: 70
Female: 55% | Male: 45%
Graduate Enrollment: 4,000

2020-21 COSTS

Tuition and fees: \$45,610
Room and board: \$15,368

FINANCIAL AID

SHU Dollars Awarded to Students:
\$100+ million annually
Students Receiving Financial Aid: 98%

FRESHMAN DEADLINES

Early Action I: November 15
Early Action II: December 15
Regular Decision I: February 1
Regular Decision II: March 1
FAFSA Filing: November 1
Scholarship: January 15

TRANSFER DEADLINES

Fall (Priority Consideration): June 1
Fall (Regular Decision): August 1
Spring: December 1



Seton Hall University

SCHOLARSHIP OPPORTUNITIES

CHICAGO ALUMNI MEMORIAL SCHOLARSHIP

Deadline: January 15

Amount: Up to \$1,000, not renewable

Application Process: apply online

Eligibility: Incoming freshmen and incoming transfers who hold permanent residence in Illinois, have at least a 3.0 GPA and a 1170 SAT or 23 ACT. Preference is given to students who demonstrate financial need.

DAN BARNEY MEMORIAL SCHOLARSHIP

Deadline: January 15

Amount: Up to \$1,000, not renewable

Application Process: apply online

Eligibility: Incoming freshmen and incoming transfers who hold permanent residence in Indiana, Illinois, Michigan, Minnesota, Kansas, Nebraska, Wisconsin, Missouri, Iowa, Oklahoma, North Dakota or South Dakota with at least a 3.0 GPA and a 1170 SAT or 23 ACT.

FORENSICS, SPEECH AND DEBATE SCHOLARSHIP

Deadline: January 15

Amount: \$2,000 - \$8,000, renewable

Application Process: apply online

Eligibility: Incoming freshmen and incoming transfers who will participate in Seton Hall's Brownson Speech and Debate Team and who display outstanding academic achievement and public speaking ability.

MARTIN LUTHER KING JR. SCHOLARSHIP

Deadline: January 15

Amount: \$6,500, renewable

Application Process: apply online

Eligibility: Incoming freshmen and incoming international freshmen who have outstanding academic records; have overcome economic or educational hardship and demonstrated a commitment to diversity and serving or working with socio-economically or educationally underserved communities.

MURRAY SCHOLARSHIP

Deadline: January 15

Amount: \$3,000, renewable

Application Process: No application required, automatically awarded to eligible student.

Eligibility: Incoming freshmen and incoming international freshmen with outstanding records of academic achievement.

NEW JERSEY FIREFIGHTERS SCHOLARSHIP

Deadline: January 15

Amount: \$3,000, renewable

Application Process: apply online

Eligibility: Incoming freshmen who are dependent children of career New Jersey firefighters who are FMBA members.

NJ STARS II SCHOLARSHIP MATCH

Deadline: ongoing

Amount: \$2,500, renewable

Application Process: No application required, automatically awarded to eligible student.

Eligibility: Incoming transfers graduating from NJ STARS program and receiving NJ STARS II grant from NJ. Available in fall and spring.

PEP BAND SCHOLARSHIP

Deadline: January 15

Amount: Up to \$2,500, renewable

Application Process: apply online

Eligibility: Incoming freshmen and incoming transfers who will participate in Seton Hall's Pep Band and who display outstanding academic achievement and musical talent.

PHI THETA KAPPA SCHOLARSHIP

Deadline: ongoing

Amount: \$2,000, renewable

Application Process: No application required, automatically awarded to eligible student.

Eligibility: Incoming transfers and incoming international transfers who are members of the Phi Theta Kappa Honor Society. Available in fall and spring.



- Graduated with a job offer from Standard & Poor's
- Internships at Standard & Poor's, NBC Universal and CNBC
- Conducted research on preventing malaria in developing countries
- Studied abroad in Spain, Portugal and Greece
- *The Stillman Exchange* managing editor
- Leadership Development Honors Program member
- University Market Research Center research assistant
- Mentored by executives from six leading corporations

KRISTINE MAMANTA

Marketing and Economics majors
Humble, Texas



NURSING SUCCESS

In addition to her seven clinical nursing rotations, **Emily Slate** landed a coveted externship in Houston and studied abroad in Rome and the Philippines where she provided nursing care to rural villages.

Nursing Major



PHARMA INSIDER

As a freshman, **Ben Starke** had already entered the research lab and got a competitive internship with Merck, one of the world's leading pharmaceutical giants.

Biochemistry Major



ALL SYSTEMS GO

With the help of his advisor, **Malik Dye** mapped out his career path and interned at Lockheed Martin, where he'll work when he graduates.

Information Technology
Management Major



CHANGE MAKER

Along with completing three social work internships, **Delores Sarfo-Darko** co-founded a CNN-recognized nonprofit dedicated to bolstering girls' self-esteem.

Social Work Major,
Nonprofit Management Minor



#1

business leadership
program in the nation
five years in a row



4th

in the nation for providing
University internships

SCHOLARSHIP OPPORTUNITIES (continued)

PIRATES PITCH

Deadline: Visit website
Amount: Up to \$2,000, renewable
Application Process: apply online
Eligibility: Incoming freshmen and incoming international freshmen who win the Pirates Pitch for High School Students competition sponsored by the Stillman School of Business.

SERVANT LEADER SCHOLARSHIP

Deadline: January 15
Amount: \$2,400, renewable
Application Process: apply online
Eligibility: Incoming freshmen and incoming transfers who display a competitive academic record and a record of exemplary service and leadership.

SETON HALL HOMETOWN SCHOLARSHIPS

Deadline: January 15
Amount: \$4,000, renewable
Application Process: No application required, automatically awarded to eligible student.
Eligibility: Incoming freshmen (fall applicants only) who attend a high school or have a permanent address in Essex or Passaic County, New Jersey, for at least one year. Must be Pell eligible, have an unweighted minimum high school GPA of 3.6, submit an application for admission and FAFSA by January 15 and remain Pell eligible.

TRANSFER SCHOLARSHIP

Deadline: ongoing
Amount: \$5,000 - \$12,000, renewable
Application Process: No application required, automatically awarded to eligible student.
Eligibility: Incoming transfers and incoming international transfers with a minimum of a 3.0 GPA and 24 or more college level credits. Available in fall and spring.

UNIVERSITY SCHOLARSHIP

Deadline: ongoing
Amount: \$4,000 - \$20,000, renewable
Application Process: No application required, automatically awarded to eligible student.
Eligibility: Incoming freshmen and incoming international freshmen based on your academic achievement in high school. Generally, the higher the academic profile, the higher the scholarship. Available in fall and spring.

UPWARD BOUND SCHOLARSHIP

Deadline: January 15
Amount: \$5,000, renewable
Application Process: apply online
Eligibility: Incoming freshmen currently enrolled in a New Jersey Upward Bound Program. Based on academic achievement. Must be Pell eligible.

WOMAN'S GUILD SCHOLARSHIP

Deadline: January 15
Amount: Up to \$5,000, renewable
Application Process: apply online
Eligibility: Incoming freshmen and incoming transfers based on academic achievement. The scholarship supports both male and female students pursuing post-baccalaureate careers in medicine, dentistry, physician assistant and physical therapy.

For more specific details and to apply for scholarships, visit www.shu.edu/scholarships

All awards are annual but are granted in fall semester only unless otherwise specified.

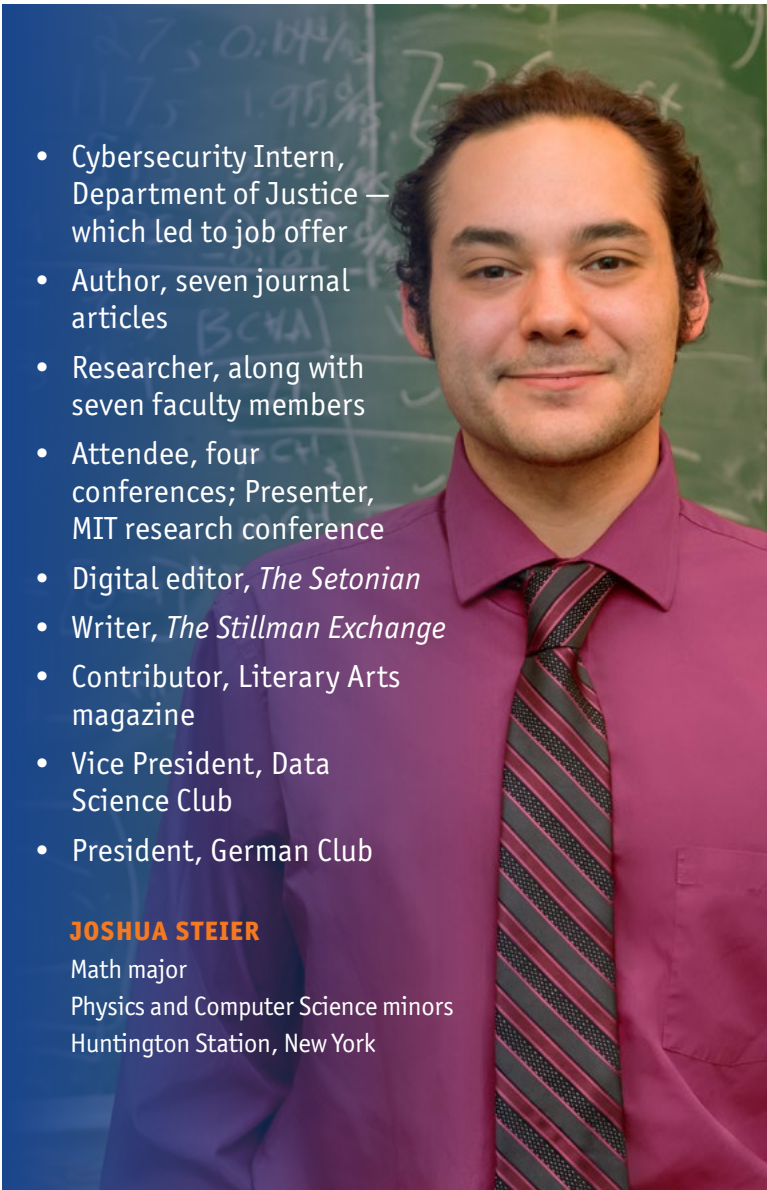
Students must have a completed application for admission on file as well as all scholarship application materials by the deadline indicated.

All scholarships are competitive and awarded based on the strength of the pool.

- Cybersecurity Intern, Department of Justice — which led to job offer
- Author, seven journal articles
- Researcher, along with seven faculty members
- Attendee, four conferences; Presenter, MIT research conference
- Digital editor, *The Setonian*
- Writer, *The Stillman Exchange*
- Contributor, Literary Arts magazine
- Vice President, Data Science Club
- President, German Club

JOSHUA STEIER

Math major
Physics and Computer Science minors
Huntington Station, New York



SPORTS

NCAA DIVISION I BIG EAST SPORTS

- Baseball
- Basketball (Men's & Women's)
- Cross Country (Men's & Women's)
- Golf (Men's & Women's)
- Soccer (Men's & Women's)
- Softball
- Swimming & Diving (Men's & Women's)
- Tennis (Women's)
- Volleyball (Women's)

CLUB SPORTS

- Baseball
- Ice Hockey
- Rugby
- Soccer (Men's & Women's)
- Volleyball (Men's & Women's)

INTRAMURAL SPORTS

- 3-on-3 Basketball
- Basketball
- Cornhole
- Dodgeball
- Flag Football
- Indoor Soccer
- Kickball
- Softball
- Tennis Doubles
- Tennis Singles
- Volleyball
- Floor Hockey



TOP 25

national ranking for graduates who got the highest paying jobs

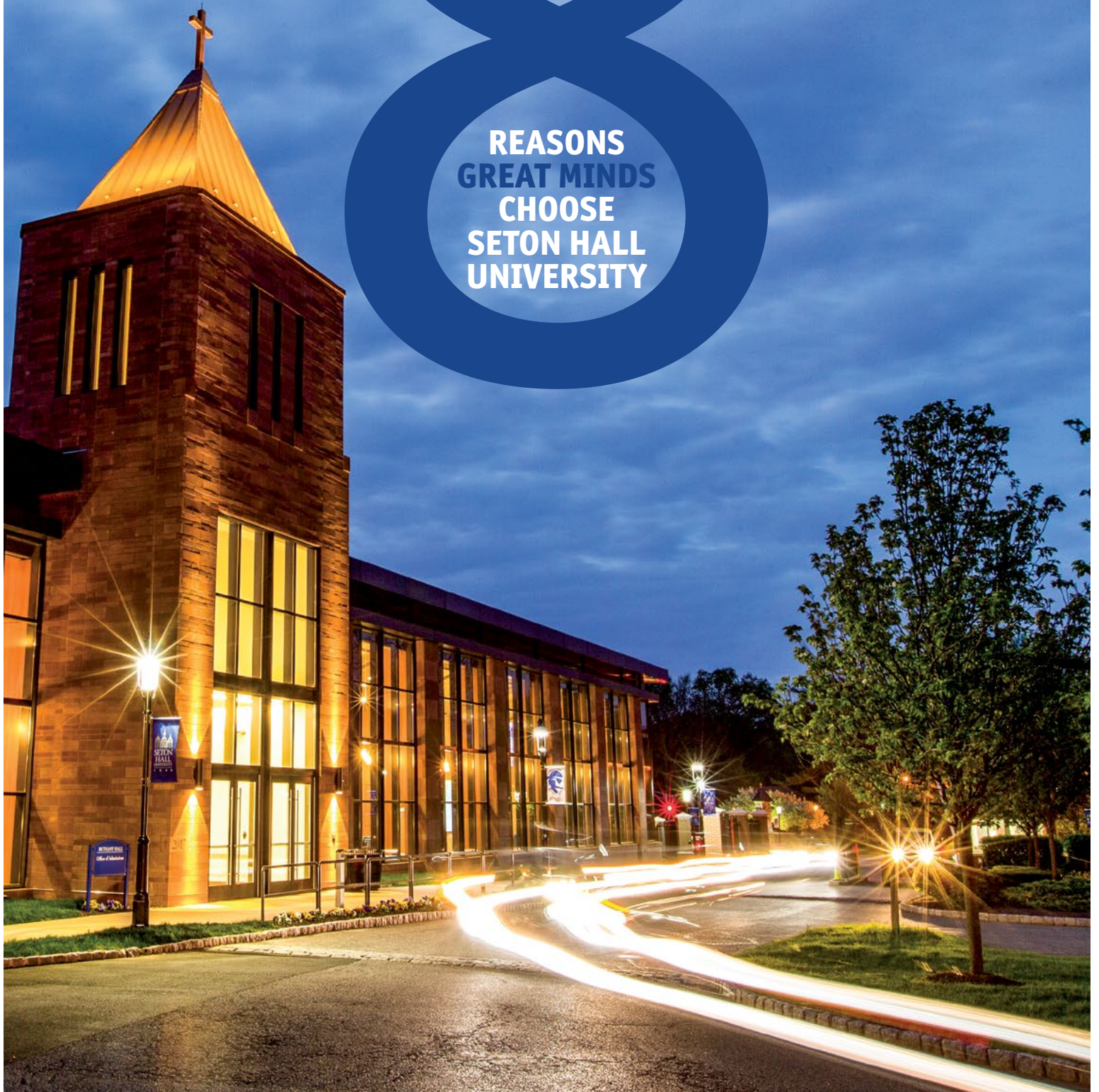


50%

higher mid-career earnings than the national average



**REASONS
GREAT MINDS
CHOOSE
SETON HALL
UNIVERSITY**



1

A Triumphant Spirit

As one of the nation's leading Catholic universities, we live the legacy of Saint Elizabeth Ann Seton every day, defining what it means to be a great mind and a pioneering force for good — by educating compassionate and informed critical-thinkers who will leave their mark and make a difference in the world.



Founded in

1856



6,200

Undergrads

2

Career Advantage

Lots of schools promise meaningful internships and career preparation. Seton Hall delivers. Freshman year, we'll pair you with a dedicated career counselor and connect you with our network of successful alumni. Seton Hall's stellar reputation will open doors. Employers know that when they hire a Seton Hall student, they're getting the best.

92%

employment rate
for Seton Hall
graduates

17,000

internship
opportunities

Students have interned or found jobs at:

ABC • American Civil Liberties Union • CNN
ESPN • FBI • Goldman Sachs & Co. • Google
Johnson & Johnson • JPMorgan Chase
KPMG • Lincoln Center • Lockheed Martin
Merck • MTV • NBA • NBC • NY Giants • Pfizer
Prudential • Sony Music • State Department
The New York Times • *The Wall Street Journal*
United Nations • U.S. Attorney's Office
U.S. Customs

3

Great Mentors

Great minds require great mentors. You'll find them here. At Seton Hall, collaborative, supportive relationships with faculty await you. In our small-classroom settings, you'll find both challenge and support. But what really sets us apart is the access you'll have. You can start conducting research, attending conferences with professors or contributing to faculty projects during your first year on campus.

14:1

student-teacher
ratio

4

In the Company of Great Minds

We've got it all: faculty and student Fulbright and Rhodes scholars, research grants from NASA, alumni CEOs and highly ranked academic programs. At Seton Hall, you'll join a community of faculty and alumni who will pave the way for your success.



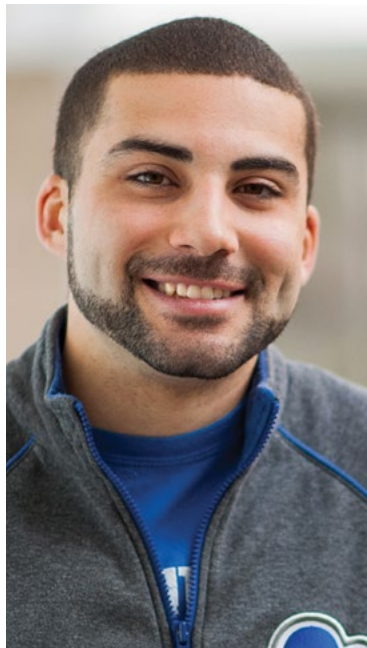
18%

of N.J. legislators
are Seton Hall alumni



93%

medical school
acceptance rate



"Through Seton Hall, I gained the practical experience needed to land my dream job with the Department of Homeland Security. After studying abroad in Spain and doing internships with the DEA and the United States Secret Service, my time at Seton Hall has exceeded my expectations."

CHASE AGAPITO

Diplomacy and International Relations major
Environmental Studies minor
West Paterson, New Jersey



"The Career Center was my best friend. I visited freshman year, knowing nothing other than I wanted internships. I wound up having four amazing internships; one was at Google, which led to a job offer from Google in December of my senior year."

BRIANA GLASS

Economics and Spanish majors
Carmel, Indiana



"Seton Hall is small, but mighty. I have friends who went to larger schools — with bigger communication programs — who didn't get the one-on-one attention I did. Besides, they had only one internship; I'm graduating with five internships on my résumé and a job offer from ABC's 20/20. That's a real advantage."

STEPHANIE GOMULKA

Journalism and Broadcasting major
Linden, New Jersey

5

A Great Start



Conducting brain cancer research alongside faculty



Creating marketing plans for local businesses



Running a meeting at the U.N.



Tracking stocks in our mock trading room floor



Studying Mandarin in China



#1

college
radio station
in the nation
(WSOU)

Seton Hall immerses you in real-world learning right from the start. As soon as you arrive on campus, you can begin blazing a path and building the skills that set you apart.

6

A Prime Location

Our suburban location in South Orange, New Jersey, is just 14 miles from New York City. With "The City That Never Sleeps" so close, options for concerts, museums, art galleries and dining are endless. And that just covers entertainment possibilities; great internships and jobs are everywhere.



98%
of students
receive grants or
scholarships
from Seton Hall

14
miles from
New York City

7

Pirate Pride

At Seton Hall, you'll join an unmistakable culture of optimism. Our diverse and welcoming Catholic community is dedicated to developing you as a whole person. Our students feel at home and share a bond we call "Pirate Pride." We offer lots of opportunities to have fun, make friends and get involved. From dances to carnivals to high-profile guest speakers and comedians — it's all here.

130+
student clubs
and
organizations

50%
of our students
participate in
25 club and
intramural sports

14
BIG EAST
NCAA Division I
Sports

8

Affordability

A Seton Hall education is more affordable than you think. We provide generous scholarships and grants to 98 percent of our students. Just as important, we are known for our value, having been rated as one of the **Best Colleges for Your Money**, noted as a school with the **Highest Paid Graduates** and named as a school with one of the **Best Returns on Your Investment**.

50
Fortune 500
companies close
to campus

\$100+
million
awarded
to students

MAJORS AND PROGRAMS

Accounting •
Accounting (5-year B.S./M.S. dual-degree) ∞
Africana Studies •
American Humanics ✓
Ancient Greek †
Anthropology •
Applied Scientific Mathematics †
Arabic †
Archaeology †
Art (Art History •; Fine Arts •)
Art (B.A./M.A. in Museum Professions) ∞
Artificial Intelligence (3+2 B.S./M.S. with Stevens) §
Asian Studies •
Athletic Training (5-year 3+2 B.A. or B.S./M.S. dual degree) ∞
Biochemistry
Biology (B.A. or B.S.)
Broadcasting (Visual and Sound Media) •
Business Administration •‡
Catholic Studies •‡
Catholic Theology •
Chemistry •
Classical Culture †
Classical Languages †
Classical Studies •
Communication •
Communication (B.A./M.A. in Communication) ∞
Computer Science •
Creative Writing
Criminal Justice •
Data Visualization and Analysis ✓
Digital Media and Video ✓
Digital Media Production for the Web ✓
Diplomacy and International Relations
Diplomacy and International Relations (B.S./M.A. dual degree) ∞
Early Childhood (integrated with Elementary and Special Education)
Economics (B.A. or B.S.) •
Education (5-year B.S.E./M.A. dual-degree) ∞
Elementary Education (integrated with Early Childhood and Special Education)
Engineering (Biomedical; Chemical; Civil; Computer; Electrical; Industrial; Mechanical) §
Engineering (3+2 B.S./M.S. dual degree with Stevens) §
English •
Entrepreneurial Studies ✓

Entrepreneurship
Environmental Sciences †
Environmental Studies •
Ethics and Applied Ethics †
Film Production/Film Editing
Finance
Finance and Technology
Financial Mathematics
French •
Gerontology ✓
Graphic Design and Advertising •
History •
Information Technologies ✓
Information Technology Management ‡
Interactive Media/
Game Design/Animation
International Business •
International Relations
Italian •
Journalism •
Latin †
Latin American and Latino/Latina Studies •
Law (3+3, BS in International Relations, BS in Business, BA in Political Science, BA in Religion or BA in Social Work / J.D.) ∞
Legal Studies in Business †
Liberal Studies
Management
Market Research ✓
Marketing
Mathematical Finance
Mathematics •
Media Studies/Film Studies
Medicine (Joint Bachelor's/M.D. Program)
M.B.A. (5-year B.S./M.B.A. or B.A./M.B.A. dual-degree) ∞
Modern Languages
Music (Comprehensive, History, Performance) •
Music History †
Music Technology †
Musical Theatre †
Nonprofit Studies †
Nursing
Occupational Therapy (6-year 3+3 B.A./M.S. dual degree) ∞
Online Course Development and Management ✓
Philosophical Theology ✓
Philosophy •

Physical Therapy (6-year 3+3 B.S./D.P.T. dual degree) ∞
Physician Assistant (6-year 3+3 B.S./M.S. dual degree) ∞
Physics (B.A. or B.S.) •
Political Science •
Pre-Dental *
Pre-Law *
Pre-Medical *
Pre-Optometry *
Pre-Veterinary *
Psychology (B.A. or B.S.) •
Public Relations •
Religion •
Russian †
Russian and East European Studies †✓
Secondary Education (optional integration with Special Education)
Social and Behavioral Sciences
Social Work •
Sociology •
Sound Production and Engineering (Visual and Sound Media)
Spanish •
Special Education (integrated with Early Childhood, Elementary, and Secondary Education)
Speech Language Pathology (6-year 4+2 Bachelor's in Psychology or Education/M.S. dual degree) ∞
Sport Management
Supply Chain Management ✓
Television Production/
Sports Broadcasting
Theatre •
Undecided
Undecided Business
Undecided Communication
Visual and Sound Media (Broadcasting) •
Web Design ✓
Women and Gender Studies †
Writing †

• Minor also available
† Minor only
✓ Certificate program only
‡ Certificate program also available
§ Dual-degree program with Stevens
∞ Seton Hall dual-degree program (please contact the Office of Admissions for details)
* Pre-professional programs (you must also select a major)

WHAT GREAT MINDS CAN DO

OPEN HOUSES

For updated schedules and information, visit www.shu.edu/openhouse

VISIT US

For the latest information, visit www.shu.edu/visiting

CONTACT US

OFFICE OF ADMISSIONS

400 South Orange Ave.
South Orange, New Jersey 07079

Call: (973) 313-6146
Main admissions number
(973) 313-6145
Counselor on duty

Email: thehall@shu.edu

Visit: admissions.shu.edu
[f](#) [i](#) [t](#) /halladmissions

SHU-173-20



21

average
class size



100%

employment rate for most business,
education and health professions majors



14

miles from
New York City

