

# THE FUTURE IS NOW

## A Case for Support for Nerinx's Next Century

Nerinx Hall | Webster Groves, Missouri  
September 2020



## Honoring our Past. Planning for the Future.

Ninety-six years ago, the first Nerinx Hall students took their places in the pioneering history of the Sisters of Loretto. This fall, we will recruit the 100th graduating class of students. What we've learned from 2020 is that change is inevitable, and how we adapt defines us. We are fortunate to be grounded in a legacy we are proud of at Nerinx Hall. We've been on the right side of history on issues that still plague our country and our communities. We've been preparing students for a changing world since our inception. We've shaped the lives of 7,000+ women since those humble beginnings in the Lockwood House in 1924. We stand on those pioneering women's shoulders as we instill the values of Faith, Community, Justice, and Respect in our current students. Now, we must grow to meet the needs of the next century of Nerinx Hall Markers and ensure the Loretto Legacy lives on for our students and alumnae. We are ever-aware this storied history is nothing without plans to educate and inspire the next century of Nerinx Hall Markers. *At Nerinx Hall, the future is now.*



## Our Campaign Priorities

---

### 1 NEW ACADEMIC SPACE, INCLUDING STEM LABS FOR OUR NEXT CENTURY

Students must have access to classrooms and technology that promote exploration of STEM-related topics and careers. We've long been fortunate to have Science teachers who inspire our students. Unfortunately, Nerinx's current physical spaces don't effectively support our faculty's level of excellence and don't allow students space to work collaboratively. Additionally, too many of our classrooms are too small or are irregularly shaped. We've made do with "good enough" for far too long in our labs and workspaces. This phase of the campaign will allow us to create three new science labs and a lab prep space, six new classrooms (to replace the "U" and "S" classrooms currently utilized), a new learning commons with three collaborative spaces for students, two seminar rooms, a new Student Success Center, an expansion of the dance studio and the art lofts, and a new entrance to the building from the back parking lot. As we prepare our young women to leave our halls ready to change the world, we must ensure they have experience working with the technology necessary to excel in STEM-related and other fields in college and beyond. The time for state-of-the-art STEM facilities and expanded work space for students is now.

**Investment in STEM Labs, Initiatives and Technology: \$10,000,000 to \$12,000,000**



Proposed learning commons

## BUILD A COMMON SPACE FOR OUR NERINX COMMUNITY

Community is one of the four values shared by Loretto Schools—and a strong sense of community is what makes Nerinx such a special place. Students have long remarked that it was the sense of community they experienced at Nerinx Hall that prepared them to make their marks on the future and kept them connected to friendships formed at Nerinx Hall long after they graduated from our halls. In developing the plans for our next century, our need for Community Spaces were at the forefront. A dual-use cafeteria and assembly space will be built on the north side of the existing gymnasium. A 300-seat cafeteria will provide the opportunity to reduce the number of lunches in the academic schedule, allowing more time for educational and community-building programming and speakers. The expansion of the cafeteria/commons and our kitchen facilities will also allow us to expand and renovate our locker rooms and our fitness areas, which are currently located under the gymnasium. This space will also be better suited for school-wide Masses and assemblies than the gymnasium.

**Investment in Community Space & Commons: \$5,000,000 to \$6,000,000**



Proposed multi-purpose addition



Proposed outdoor classroom & dining terrace

## MODERNIZE CLASSROOMS

Since its inception, Nerinx Hall has produced students ready to take on whatever challenge they encounter. Our robust and challenging curriculum has provided students with the foundation they need to excel in the collegiate environment, challenge the status quo, and change our world. We teach our students never to settle. Yet, we have settled with the status quo in our classrooms and academic spaces for too long. An investment in the modernization of these spaces is an investment in the future. All classrooms in the original 1954 school building and the West Hallway addition will be renovated and modernized with new LED lighting, green-friendly HVAC systems, new windows, and other technology upgrades. Classrooms will be modernized with new fixtures, technology, and layout. Updates will be made throughout the building to ensure ADA compliance in existing lower-level classrooms.

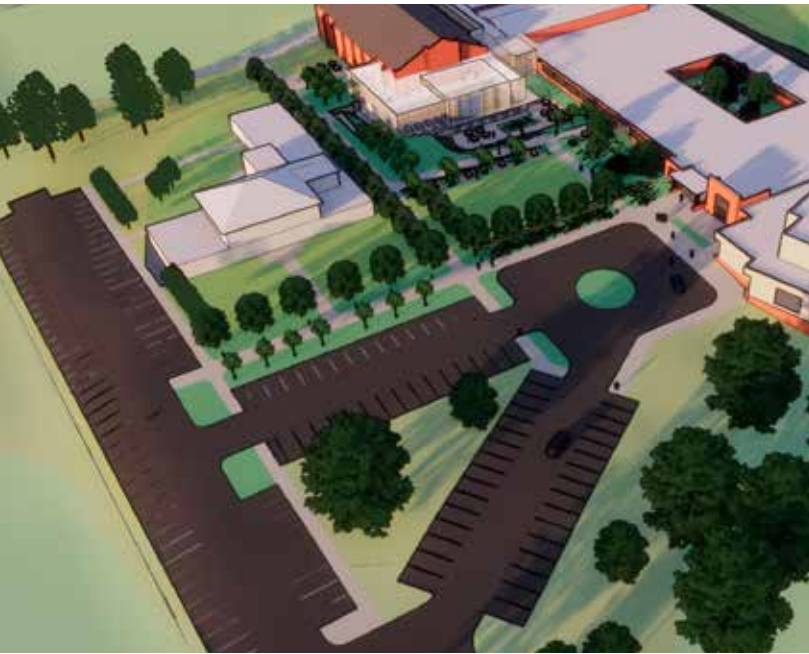
**Investment in Classroom Updates & Replacements: \$5,000,000**



## **GROW OUR ENDOWMENT**

We believe a Nerinx Hall education should be accessible to any young woman independent of her family's socioeconomic status. In a world of uncertainty, we want to be prepared to meet the needs of our families. And, as we witnessed in 2020, a family's ability to pay can change in an instant. During the 2019-20 school year, we provided \$1.3 million in scholarships and financial aid with an average award of \$3500. Just one year later, for 2020-21, our financial aid budget increased to more than \$2 million with an average award of \$5000. Our level of financial support did not grow significantly over the same period. We depend on our endowment to provide financial aid, Diversity Awards, and Merit Scholarships to students. An investment in the endowment will provide security for these awards and other projects directly impacted by any loss of tuition dollars, including faculty salaries.

**Investment in Endowment: \$3,000,000**



Proposed arrival court & quad

# 5

## **ESTABLISH A QUAD IN THE CENTER OF CAMPUS & IMPROVE STUDENT PARKING**

Our students and faculty are torchbearers for the Loretto commitment to the earth. As a school community, we reaffirmed our commitment to living green through our 2020-2025 Strategic Plan. A redesigned-Quadrangle will preserve our existing trees, and further develop an arboretum-like environment in the center of campus. The use of native and drought-tolerant plants will also reduce mowing and minimize landscape disturbances. In maximizing green space, we also hope to develop an outside space that invites reflection, thinking, and collaboration. The quad will be designed to provide study space and active recreational and class use. Removing the traffic circle, currently located between Lockwood House and the school building, will both beautify the campus and make parking easier for students, faculty and visitors.

**Investment in Central Quad: \$1,000,000**



Proposed south addition

## Campaign Summary

---

### **Science, Technology, Engineering and Mathematics Labs & Spaces**

**\$10,000,000 to 12,000,000**

Design and build a new addition that will include three new science class labs, six large classrooms, multiple seminar rooms, space for faculty offices, a new Student Success Center, a dynamic student hub, and a new rear entrance to the school; decommission the “U” and “S” classrooms.

### **Student Commons**

**\$5,000,000 to 6,000,000**

Create a dual-use assembly and dining space at the north side of the existing gymnasium. A balcony overlooking the news space serves as a staging area for events. The lower-level of the existing gym building will be overhauled to include a new kitchen, servery, fitness space, and locker rooms.

### **Modernization of Current Building**

**\$5,000,000**

Upgrade existing classroom spaces and provide additional collaborative spaces throughout the current building; modernize the HVAC and lighting systems and the windows to make the building more energy-efficient; address accessibility issues on lower-level “W” Hallway; enhance finishes and technology and modernize layout in existing classrooms.



Aerial view of the proposed south addition

### **Grow the Endowment**

**\$3,000,000**

Provide financial stability to continue to attract the most well-rounded and diverse students and faculty. Ensure those seeking a Nerinx Hall education will not be turned away due to a family's ability to pay.

### **Establishment of Central Quad**

**\$1,000,000**

Create a new quad/greenspace that will become the center of campus. This new space functions as a destination for students and faculty, offering seating areas and landscaped alcoves and improve student and faculty parking.

**Founded in 1924, Nerinx Hall is an independent, Catholic, college-preparatory school for young women in the Loretto charism of loving service. The mission of Nerinx Hall is to cultivate empowered women who pursue academic excellence within a diverse community, forge a path towards social justice, and grow in knowledge of themselves and their world. ~ Nerinx Hall mission**



**NERINX HALL**

[nerinxhall.org/give](http://nerinxhall.org/give)