

## Attea Middle School

Bus transportation for Glenview students in public and private schools living within school attendance areas is free of charge for those living more than 1 ½ miles from school and for those living in a designated area that has been approved by the Illinois Department of Transportation as having a serious safety hazard in route to school.

The area for free transportation for Attea Middle School is:

- North of W. Lake Avenue and east of Patriot
- South of E. Lake Avenue
- East Lehigh Avenue
- Cabot Ln from 1612 and south

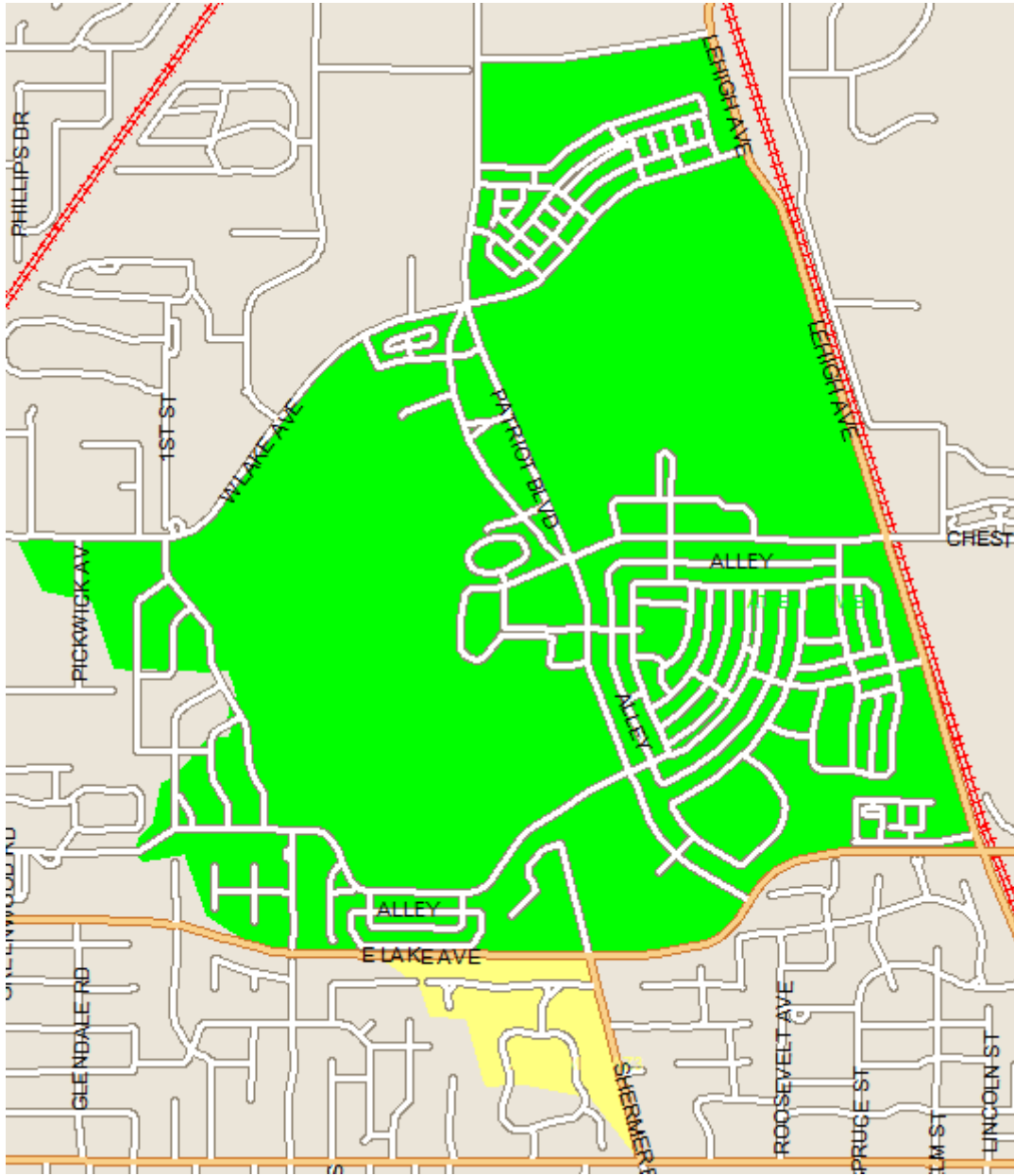
The walking area for Attea Middle School is:

- North of E. Lake Avenue; west of Lehigh Avenue,
- North of 1627 Saratoga
- North of W. Lake Avenue; east of Patriot Blvd. and west of Lehigh Road
- South of Compass Road

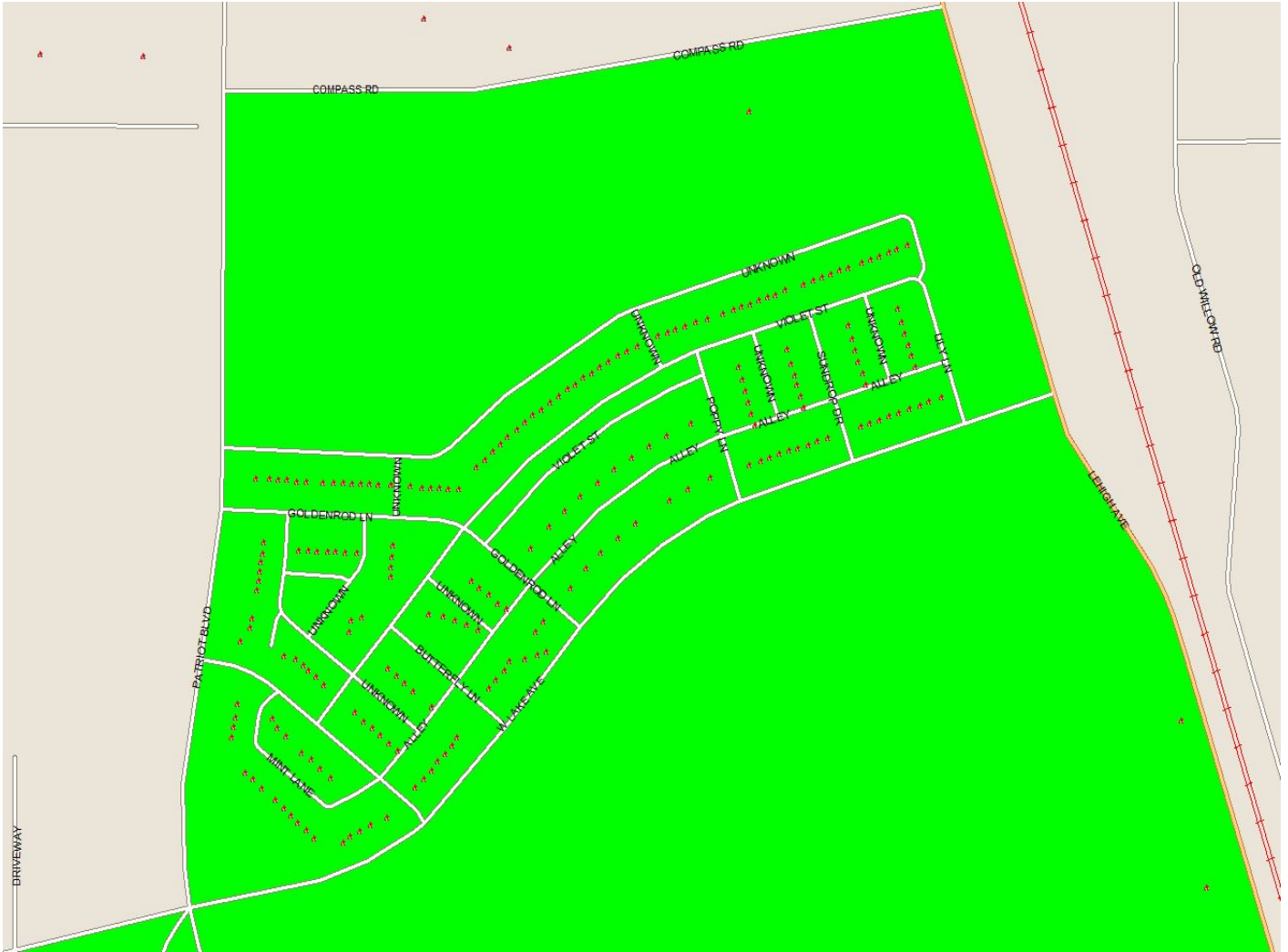
Those living in an area that does not qualify for free transportation may apply for transportation. The transportation fee is approved by the Board of Education each year. This is available on a space available basis only. Payment must be made at the time of school registration.

For further clarification, please reference the maps listed below. The walk boundary is illustrated in green.

**Attea Walk Boundary (Yellow=Hazard)**

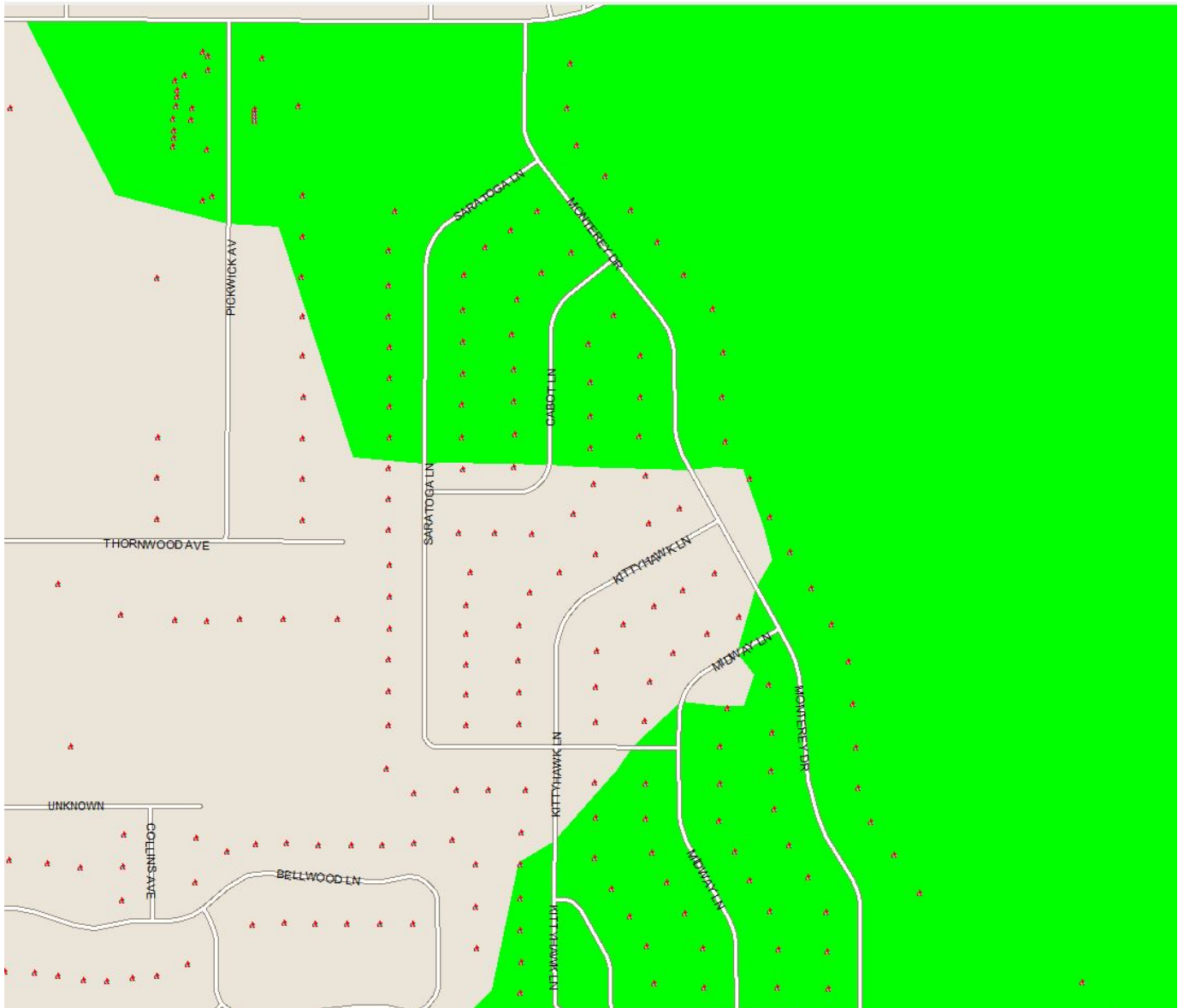


# Attea North Boundary





# Attea West Boundary



# Attea South Boundary (Yellow=Hazard)

