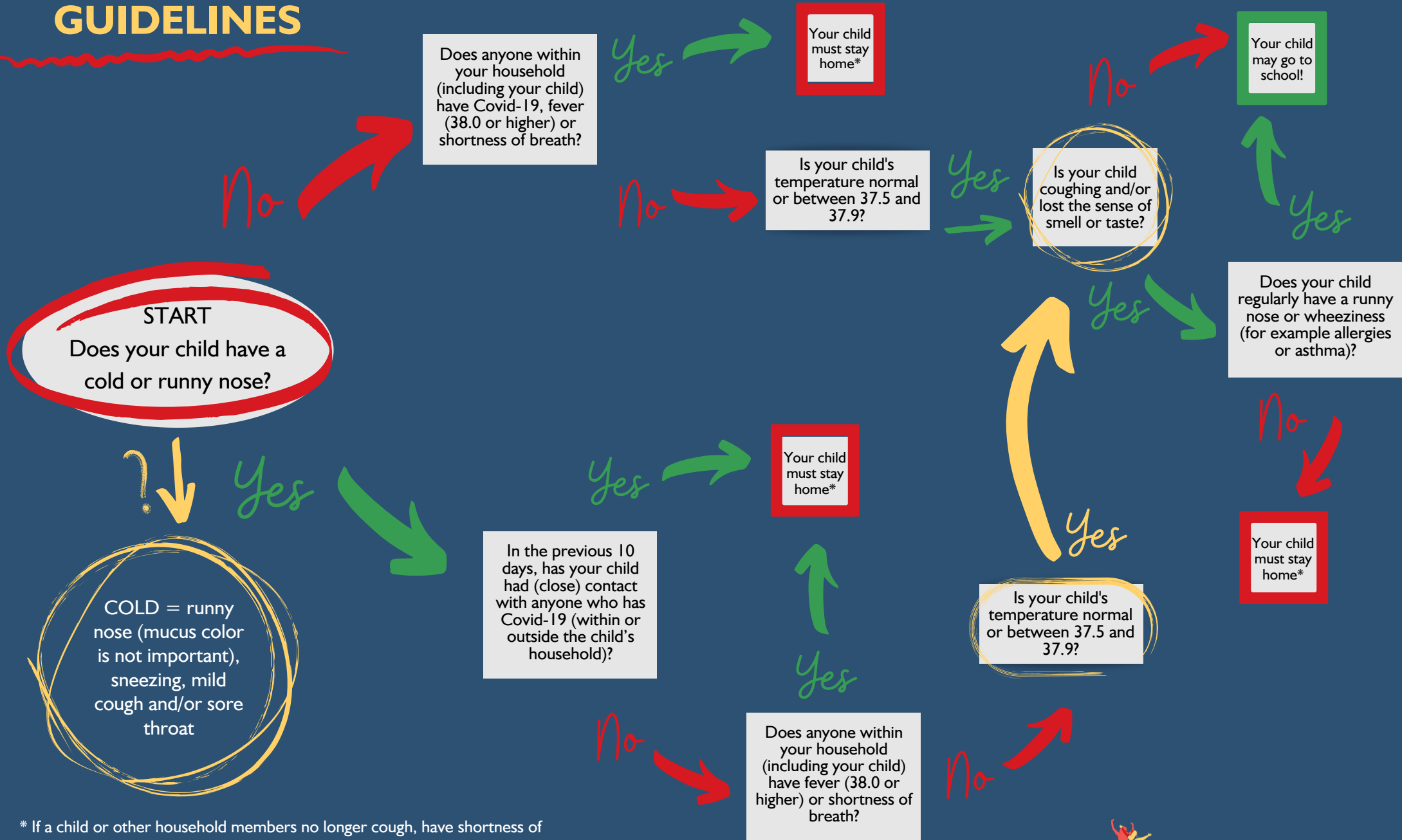


COVID-19 GUIDELINES

Children Ages 0 - 12 Flow Chart: Should My Child Go To school?



* If a child or other household members no longer cough, have shortness of breath or fever for at least 24 hours, then go through the flow chart again.

COVID-19 GUIDELINES

Next Steps & Clarifying Information: Children up to and including age 12

THE GGD WILL NOT TEST

- If your child has cold symptoms (such as a runny nose, cold, sneezing or sore throat) or familiar hayfever or asthma symptoms.

THE GGD WILL TEST

- If your child is ill with COVID-19 symptoms, call the doctor immediately. If a household member, or someone your child has been in close contact with tests positive for COVID-19 and your child develops symptoms, then check with your doctor or the GGD if a test is necessary.

WHAT TO DO AFTER TEST RESULTS?

- If the test result is positive, follow the GGD instructions. If the test result is negative, your child may return to the creche/school even if all symptoms have not cleared up completely.

HOW LONG SHOULD MY CHILD STAY AT HOME ?

If your child or other household members no longer cough, have shortness of breath or fever for at least 24 hours, then go through the flow chart again.

Contact your doctor if you still have questions after going through the flow chart. Doctors do not issue medical declarations whereby a child may return to a creche/school. If in doubt, or if you have any questions, you can call the national information line, which is free: 0800 1351 (08:00 – 20:00)

The flow chart is developed based on the guidelines of The National Institute for Public Health and the Environment (RIVM) and is a guide for parents and employees in childcare ** and schools. You can judge if a child with a cold can/cannot go to the creche/school. There is a separate flow chart for children ages 13 to 18.

The outcome of the flow chart does not apply to siblings. Each child has to be evaluated separately using the flow chart, which is updated based on the government regulations dated September 22 2020.

** Creche, kindergarten, after school care and host parent