



Zoom & PowerSchool

Boys' Latin of Philadelphia Charter School
Tuesday, September 22, 2020

Overview of This Session

Zoom

Signing In & Basic Features

PowerSchool

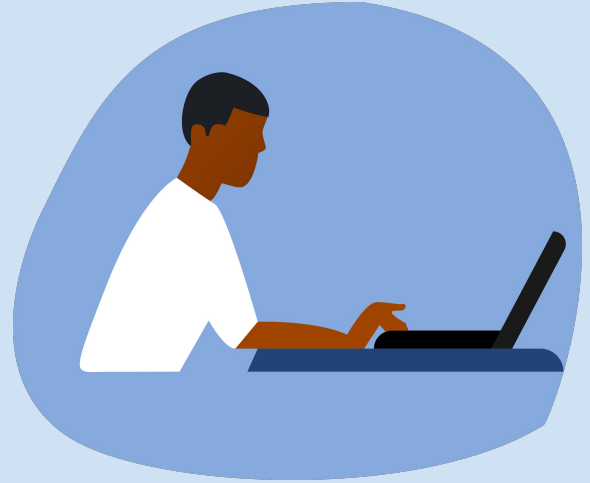
Signing In & Checking
Grades

1) Zoom



All Zoom links must be accessed through Schoology. This is the most secure setup and it prevents technical issues!

- Remember, you can find Schoology under “BL Links” on your Chromebook!
- You should only use your BL email on your BL Chromebook; multiple emails can cause sign on issues.

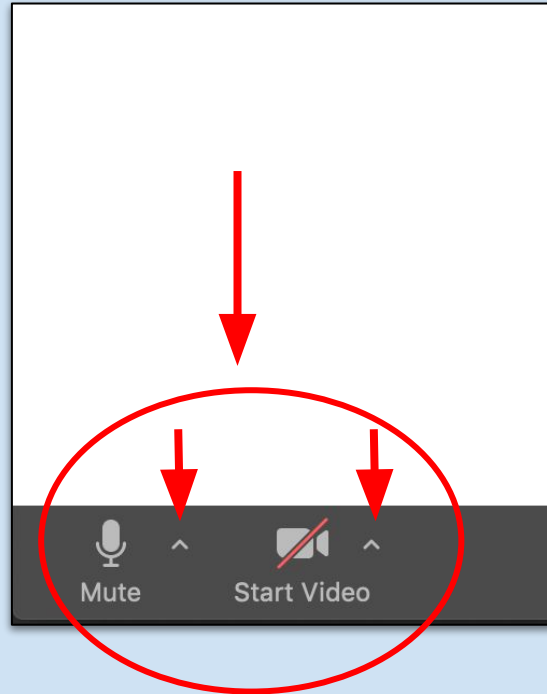


Universal BL Zoom Norms

- Cameras “on.”
- “Mute” when not speaking.




Volume and Camera



- The small arrows reveal detailed settings, such as what mic you are using. This is helpful if students are using headphones.
- And, you can change your background to our school approved image by clicking the small arrow next to "Start Video."

Chat

Students can private message their teachers by unselecting everyone and instead selecting the teacher's name.

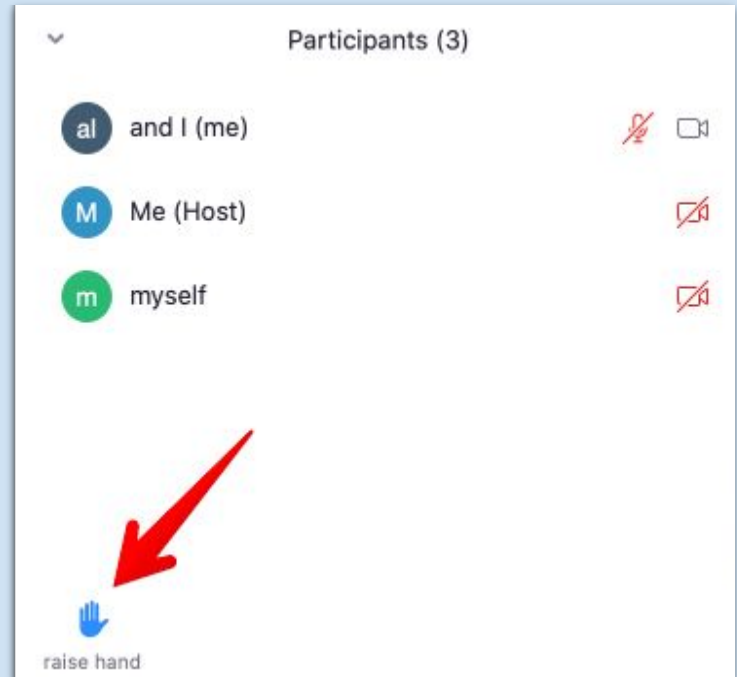
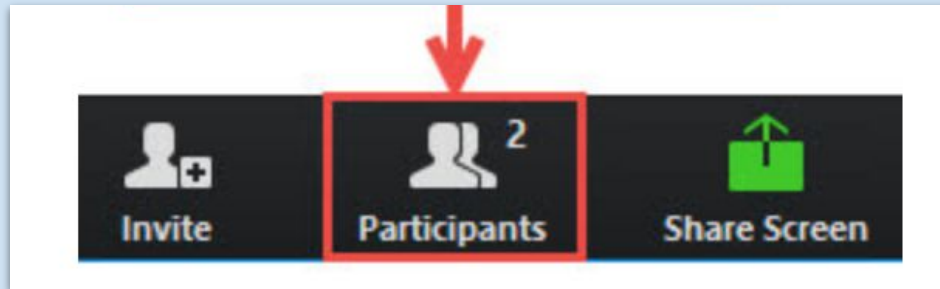


To: **Everyone** ▼

Type message here...

File ...

Students can raise their hand...



Some common issues...

- Be sure you are signed in as a student under your Boys' Latin email address.
- Be sure you are selecting the correct class at the correct time. Teachers use different links for different periods, so students will not be able to join their class meeting at the incorrect time.
- Be sure you are waiting until the start time! Sometimes, teachers are coming from a different class and will not begin the meeting early.



2) PowerSchool



What is PowerSchool?

PowerSchool is our school-wide gradebook. It is updated weekly with student grades, by assignment.




How do I get my PowerSchool information?

- Your student received their information at the start of the year in their school email.
- If you cannot locate their information, please email [your student's advisory teacher](#).



How to Log-In to PowerSchool



Student and Parent Sign In

Sign In

Create Account

Username

Password

[Forgot Username or Password?](#)

Sign In

Copyright © 2005-2016 PowerSchool Group LLC and/or its affiliate(s). All rights reserved.
All trademarks are either owned or licensed by PowerSchool Group LLC and/or its affiliates.



Grade Breakdowns

Middle School

Course Weight

Test	25%
Projects / Labs	25%
Quiz	20%
Classwork	20%
Homework	5%
Do Now	5%
Total	100%

High School

Course Weight

Attendance/Active Participation	10%
Classwork	20%
Homework	10%
Major Assessments: Test/Projects/Papers/Presentations	30%
Minor Assessments: Quizzes/Essays	30%
Total	100%

Grade Markers

- Comments provide additional information about student work.
- The most important markers are usually *Comment* and *Missing*.



Legend

1 - This final grade may include assignments that are not yet published, or may be the result of special weighting used by the teacher. [Click to view additional information on special weighting.](#)

Icons  - Has Description |  - Has Comment |  - Collected |  - Late |  - Missing |  - Exempt from Final Grade |  - Absent |  - Incomplete |  - Excluded

Any questions?

