

District 112 is dedicated to the preparation of life-long learners so each may achieve personal success and contribute to family and community.



Exceptional Personalized Learning

The mission of District 112 is to prepare learners to achieve their personal best.

District 112 does not discriminate on the issues of race, color, national origin, gender, religion, age, or disability in employment or in the provision of services.



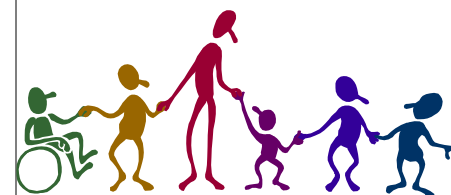
**Intervention
Team
(i-Team)**



**Together We Can
Help Them
Succeed!**

**Educational
Intervention Team
(i-Team)**

Parent/Guardian Informational Brochure



School District 112

Preparing learners to achieve their personal best

What is i-Team?

Many students experience academic, social, emotional, or behavioral difficulties at some point of their educational career. Educational Intervention Team (i-Team) consists of school staff coming together to support students. The team typically includes building administrators, teachers, and other student support staff as appropriate.

As part of the i-Team process, the team collects educational data and parent information about a student's skills. After gathering information the team recommends educational interventions/strategies that will best meet the needs of the student.

Why is a child involved in i-Team?

Students are typically referred by the classroom teacher, but any member of the school staff and/or parents may request support from the i-Team.

Referrals to i-Team may occur for many different reasons. A child may be experiencing difficulties related to academic areas, social emotional areas, behavioral areas, or health concerns.

Referrals to i-Team typically occur when a child is continuing to demonstrate difficulties despite modifications and best practice strategies that teachers and parents have already put in place. The team process allows for brainstorming to explore potential causes and solutions to address areas of need. The purpose is to help children experience greater success.

What happens at i-Team meetings?

The team discusses student strengths, outlines concerns, reviews pertinent history and records, and discusses current classroom practices. The team then brainstorms educational interventions/strategies, looks at research, and chooses a plan to improve student success. The team meets regularly to review plans, monitor student progress, and make modifications to the plan if needed. Parents are kept informed throughout the i-Team process.



What are Educational Interventions/Strategies?

Educational Interventions are strategies identified to help a child experience greater success. They may include utilizing different instructional approaches or methods, providing opportunities to meet with student support staff, development of a behavior support plan, or adjusting a child's schedule. Educational Interventions/Strategies are monitored to measure their success.

What is the role of the Parent / Guardian in the i-Team process?

The Parent/Guardian:

- Will always be contacted by teams/teachers regarding any concerns
- Will have the opportunity to provide valuable information about their child which will be used in planning effective educational interventions/strategies
- Will receive updates regarding educational interventions/strategies and progress
- May participate in intervention planning and educational strategies when appropriate

What is the outcome of i-Team?

If educational interventions/strategies are helpful to the student, they are continued. If educational interventions are not helpful, the team reviews student information and brainstorms new interventions/strategies. If educational interventions continue to be unsuccessful the team, including parents, will meet to review all information and consider more personalized educational options.