



CREAN LUTHERAN HIGH SCHOOL



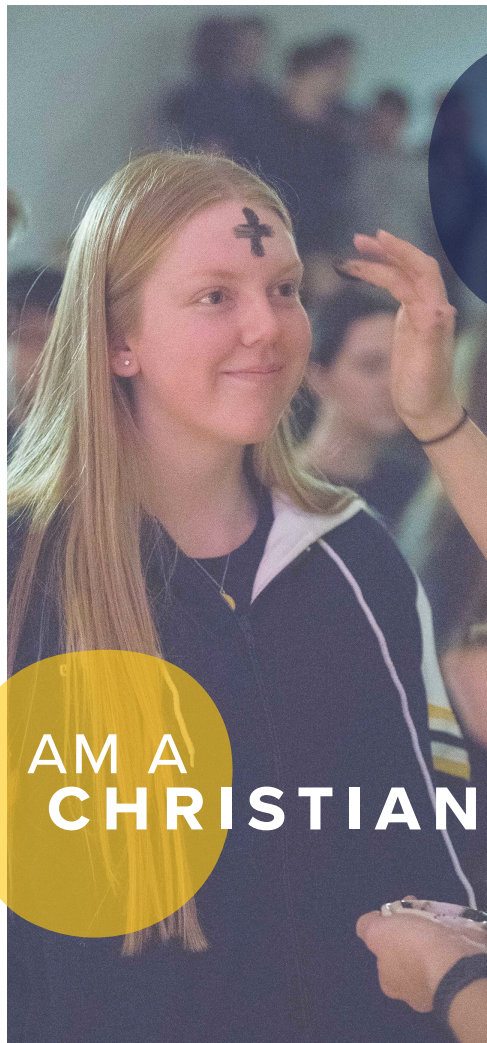
*I have said these things to you, that in me you may have
peace. In the world you will have tribulation.
But take heart; I have overcome the world.*

John 16:33

Crean Lutheran High School desires its students to be knowledgeable about their faith and willing to defend their beliefs; to engage in the classroom; to think critically and communicate clearly; and finally, to live their lives as servant-leaders for Jesus Christ.

OUR MISSION

PROCLAIMING JESUS CHRIST THROUGH EXCELLENCE IN EDUCATION



"At Crean Lutheran, we equip students spiritually, academically, and socially to become Christian leaders who serve as Christ's beacons, shining His love in a world cloaked in darkness."

- Jeffrey Beavers, M.A. LMFT, Executive Director | CEO



OUR CAMPUS

Crean Lutheran High School is comprised of two properties. Our 18-acre main campus includes 50,000 sq. ft. of academic space, a 15,000 sq. ft. event center and gymnasium, over 12,000 sq. ft. of visual and performing arts space, a 5,000 sq. ft. strength and conditioning center, and multiple athletic fields. Our Athletic Complex, a 12-acre property within walking distance from the main campus, includes baseball and softball fields, sand volleyball courts, and six tennis courts.



HEALTH, SAFETY, & SUPERVISION

Crean Lutheran is a closed campus committed to providing trained campus supervision throughout the school day (students may not leave campus between classes). Furthermore, classroom doors are equipped with an access control system, which enhances security on campus. By God's grace, these enhancements allow Crean Lutheran's Student Services Department to better foster an environment where students thrive socially, emotionally, and spiritually.



A TRADITION OF EXCELLENCE

Crean Lutheran High School is part of the renowned Lutheran education system, which has been educating students for over 165 years. The National Assessment of Educational Progress compiled evidence of Lutheran education excellence; their data shows Lutheran schools score significantly higher than all other schools, including public, Catholic, charter, and other Protestant schools (Christopher Lubienski, “Charter, Private, Public Schools and Academic Achievement,” p.3). Additionally, Lutheran school students score 23 percent higher than national averages on standard achievement tests (Brekke, M., Youth Research Center).

AVERAGE SAT SCORES





22.6
STATE
AVERAGE

26.1
CREAN LUTHERAN
AVERAGE

20.7
NATIONAL
AVERAGE

AVERAGE ACT SCORES

CONTINUING EXCELLENCE

Crean Lutheran places high value on personalized education. Accordingly, Crean Lutheran maintains a 19:1 average class size. Students may follow various academic tracks, including those designed to meet the elevated standards of the University of California's A-G subject requirements or those customized to meet the admission guidelines for elite private institutions. A wide array of academically rigorous honors and Advanced Placement (AP) courses, as well as dual credit courses, support these tracks.

19:1
AVERAGE
CLASS SIZE

COUNSELING & CAREER PLANNING

Crean Lutheran counselors work in close partnership with students and their families to assist students in developing academically, socially, emotionally, and spiritually. The Counseling Department is comprised of five PPS credentialed counselors, thereby providing a student to counselor ratio far exceeding national standards. The Counseling Department utilizes Naviance, a college and career readiness tool which assists in the planning process of students' post-secondary plans. Students are also afforded the opportunity to take advantage of free ACT/SAT preparation classes hosted by The College Blueprint. During the specialized preparation program, students become familiar with test content and acquire the tools needed to score well.



96%

OF THE CLASS OF 2020
WENT ON TO ATTEND
A COLLEGE OR
UNIVERSITY

Crean Lutheran's alumni have been accepted into some of the nation's finest colleges, universities, and conservatories. Graduates from the Class of 2020 are attending Columbia, Cornell, Emory, Harvard, Michigan, Notre Dame, NYU, Princeton, Stanford, the U.S. Air Force Academy, UCLA, UC Berkeley, UPenn, USC, Vanderbilt, Yale University and many other elite institutions across the country. In support of their collegiate aspirations, CLHS students are well prepared to engage in strenuous university-level academics.

A PROMINENT EDUCATION

LUTHERAN SCHOOLS HAVE A 166 YEAR HISTORY OF PROVIDING A STRONG EDUCATIONAL ENVIRONMENT. CLHS IS ACCREDITED BY BOTH THE WESTERN ASSOCIATION OF SCHOOLS AND COLLEGES (WASC) AND NATIONAL LUTHERAN SCHOOL ACCREDITATION (NLSA).

MULTIPLE LEARNING OPTIONS

STUDENTS MAY TAKE CLASSES IN VARIOUS SETTINGS, INCLUDING ON-CAMPUS, ONLINE, AND BLENDED (A COMBINATION OF ON-CAMPUS AND ONLINE).

23

AP COURSES

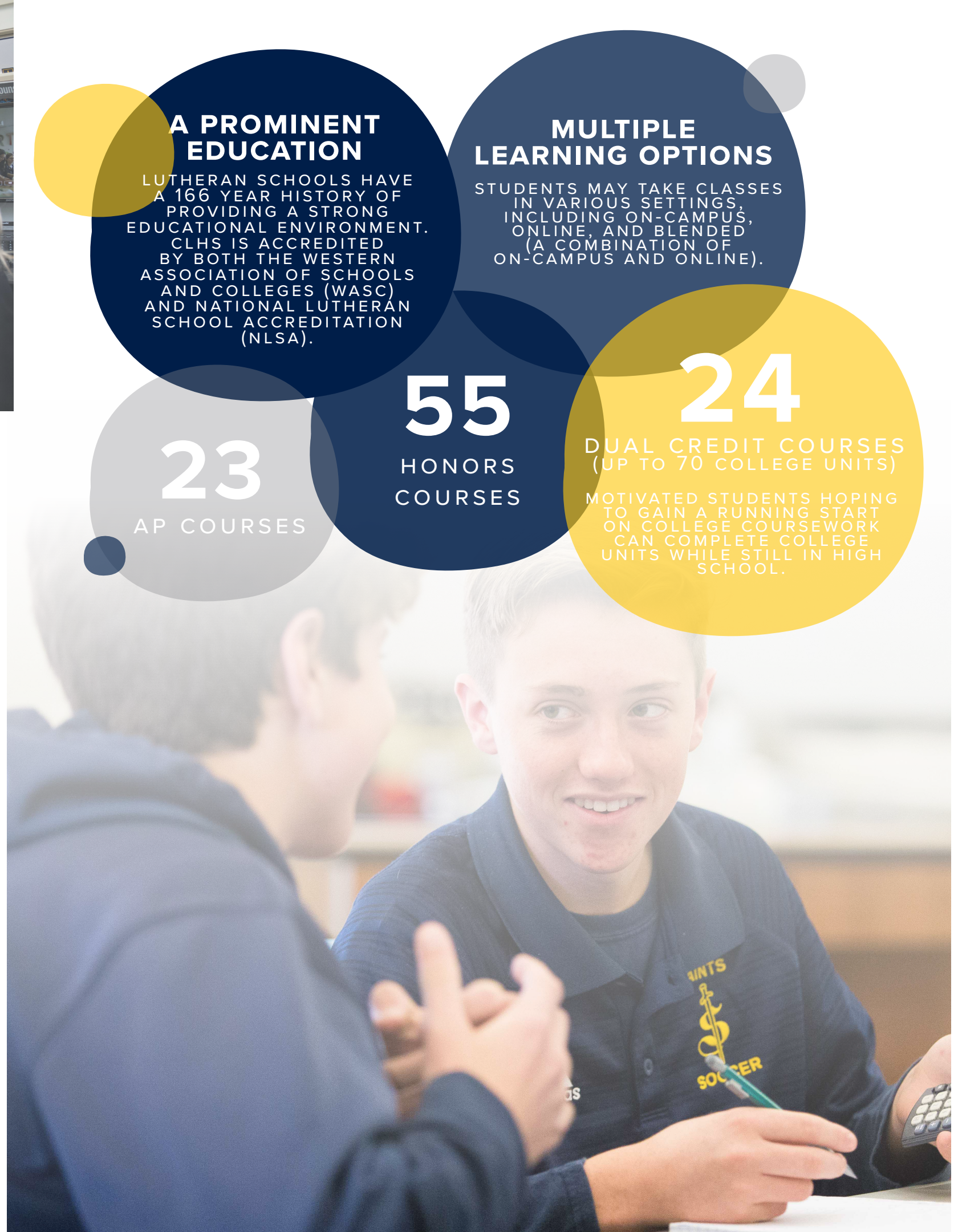
55

HONORS COURSES

24

DUAL CREDIT COURSES (UP TO 70 COLLEGE UNITS)

MOTIVATED STUDENTS HOPING TO GAIN A RUNNING START ON COLLEGE COURSEWORK CAN COMPLETE COLLEGE UNITS WHILE STILL IN HIGH SCHOOL.





SERVANT LEADERSHIP TEAM

Our award-winning servant leadership team (SLT) and link crew, student ambassadors, academic teams, clubs, and service and outreach programs provide an array of opportunities for students to become involved in campus activities. Whether planning campus-wide pep rallies and spirit events, welcoming new students to the campus, competing in debate, building robots, participating in student-driven clubs, or volunteering locally and globally, Crean Lutheran students can enjoy a variety of programs where they are welcomed, get involved, and experience growth.

EDUCATION TECHNOLOGY

Integrating technology into the classroom setting is a hallmark of Crean Lutheran. All students are required to have a laptop that meets technology guidelines. From online research to group collaboration, students use their laptops on a daily basis. Crean Lutheran also encourages students to utilize available digital textbooks and the school's JSTOR subscription (collegiate-level academic journals) to advance their academic pursuits. Finally, CLHS employs Canvas as a powerful course management system. Through Canvas, students can submit homework, download class content, take quizzes, communicate with teachers, and monitor grades.





INTERNATIONAL DEPARTMENT

Crean Lutheran High School provides a top-tier education on a multicultural campus, which currently hosts students from over ten countries. Crean Lutheran's nationally-commended International Department plays a valuable role in making CLHS one of the nation's most progressive high schools. The International Department is staffed by a team of professionals who admit and shepherd international students through the I-20 process. A selection of qualified international students are admitted each year, and upon request, International Department personnel connect these students with local host families. Individuals interested in learning more about the international admissions process should contact the International Department at int@creanlutheran.org.

LEARNING SUCCESS PROGRAM

The Learning Success Program (LSP) assists students to excel academically in pursuit of the school's mission of Proclaiming Jesus Christ through Excellence in Education. LSP Director Mary Oliver, M.Ed., M.A. leads the program with the support of resource teachers. The program supports students with documented learning needs through accommodations and counseling so that they may achieve success. For more information, contact the Admissions Department at admissions@creanlutheran.org.



Crean Lutheran offers four Christ-centered and scholastically rigorous cohorts that equip students for academic and professional success in their chosen field of study. Each cohort introduces students to high-level professionals, includes experiential field trips, and provides both independent research and internship opportunities. Cohort students take a variety of dual-credit college courses, which equip them to be emerging leaders in a professional environment. Cohort graduates receive special recognition at graduation as well as on their transcripts. Enrollment in a cohort requires a separate application. More information is available at creanlutheran.org/cohorts.

MEDICAL COHORT

The Medical Cohort is designed for students who are interested in learning about health careers. The program prepares students to study various disciplines in the medical field through specialized coursework, lectures from health professionals, and field trips to medical and industrial facilities. Our students acquire clinical knowledge through partnerships with local hospitals, universities, and other medical facilities.

Medical Cohort Courses Include:

Medical Careers • AP Biology • AP Chemistry
Honors Anatomy & Physiology • AP Physics
Honors Sports Medicine

LAW COHORT

The Law Cohort provides a launch point for students interested in pursuing careers in law, elected office, and/or government. The program prepares students for the rigorous analytical reading and writing requirements of the legal profession while emphasizing the philosophical foundations of law, government/political connections, and the practical aspects of legal practice. Additionally, our students will meet practicing attorneys from a variety of fields, visit elected officials and local governments, and participate in one or more competition-based activities.

Law Cohort Courses Include:

Honors Ethics • Honors Communications • Honors Introduction to Law • Honors Philosophy of Law
Speech & Debate • AP American Government



ENGINEERING COHORT

The Engineering Cohort is designed to empower students by building a strong foundation for college and a career through Project Lead the Way (PLTW) engineering courses. Students engage in interdisciplinary activities, develop critical thinking skills, and learn to collaborate through teamwork. Through partnerships with UCI and other universities, students are exposed to a variety of engineering specializations.

Engineering Cohort Courses Include:

Honors Computer Programming I and II

Honors Introduction to Engineering Design

Honors Principles of Engineering (PLTW)

Honors Aerospace (PLTW)



BUSINESS COHORT

The Business Cohort develops future leaders and entrepreneurs for a global economy, preparing students for careers in marketing, finance, accounting, communication, and hospitality. The courses engage students in real world experiences, promoting success in college and their careers. By drafting resumes, interviewing for internships, writing grants, building their own businesses, and learning from influential guest speakers and local business partners, students are equipped and enabled to make a difference for themselves and the world.

Business Cohort Courses Include:

Honors Introduction to Business

Honors Communication • Honors Marketing

Honors Accounting • Honors Global Business

Honors Finance • AP Statistics



LIST OF COLLEGES

With comprehensive services offered through five full-time PPS-credentialed counselors, CLHS students have matriculated to top colleges and universities around the nation. Below is a list of institutions where a few of our graduates are pursuing higher education:

ALABAMA

Samford University
University of Alabama

CALIFORNIA

Art Center College of Design
Azusa Pacific University
Biola University
California Baptist University
California Institute of Technology
California Lutheran University
California State Polytechnic, Pomona
California State Polytechnic, San Luis Obispo
Chapman University
Concordia University Irvine
Loyola Marymount University
Occidental College
Otis College of Art and Design
Pepperdine University
Point Loma Nazarene University
Pomona College
San Diego Christian College
Stanford University
University of California, Berkeley
University of California, Davis
University of California, Irvine
University of California, Los Angeles
University of California, Riverside
University of California, San Diego
University of California, Santa Barbara
University of California, Santa Cruz
University of Southern California
Westmont College

COLORADO

United States Air Force Academy

CONNECTICUT

University of Connecticut
Yale University

FLORIDA

Embry-Riddle Aeronautical
University

GEORGIA

Emory University
Georgia Tech University

ILLINOIS

Northwestern University
School of the Art Institute of Chicago
University of Illinois,
Urbana-Champaign
Wheaton College

INDIANA

Purdue University
University of Notre Dame

MASSACHUSETTS

Berklee College of Music
Boston College
Boston University
Emerson College
Harvard University
Massachusetts Institute of Technology
New England Conservatory of Music
Northeastern University
Smith College
Tufts University

MARYLAND

Johns Hopkins University
Maryland Institute College of Art

MICHIGAN

University of Michigan

NEW JERSEY

Monmouth University
Princeton University
Seton Hall

NEW YORK

Columbia University
Cornell University
New York University
Parsons School of Design
Rensselaer Polytechnic Institute
School of Visual Arts
Stony Brook University
Syracuse University
The Juilliard School
United States Military
Academy, West Point
University of Rochester

NORTH CAROLINA

Duke University
Elon University
University of North Carolina,
Chapel Hill

OHIO

Case Western Reserve University
Ohio State University

OREGON

University of Oregon

205
GRADUATES



142

SENIORS WERE
ACTIVE MEMBERS
OF THE CALIFORNIA
SCHOLARSHIP
FEDERATION

88%

WENT TO A
FOUR-YEAR
COLLEGE



67

SENIORS WERE
ACTIVE MEMBERS
OF THE NATIONAL
HONOR SOCIETY



CLASS OF
2020

96%

WERE ACCEPTED
TO A COLLEGE OR
UNIVERSITY

\$49,000

AVERAGE SCHOLARSHIP
OFFER PER STUDENT

PENNSYLVANIA

Carnegie Mellon University
Lehigh University
Penn State
University of Pennsylvania
Villanova University

Southern Methodist University

Texas A&M University
Texas Christian University
University of Texas, Austin

WISCONSIN

Marquette University
University of Wisconsin, Madison

RHODE ISLAND

Brown University
Rhode Island School of Design

VIRGINIA

College of William and Mary

JAPAN

Keio University
Waseda University

TENNESSEE

Lipscomb University
Vanderbilt University

WASHINGTON

Gonzaga University
Pacific Lutheran University
University of Washington

KOREA

Korea Advanced Institute of
Science and Technology (KAIST)
Korea University
Seoul National University
Yonsei University

WASHINGTON DC

Catholic University of America
George Washington University

TEXAS

Baylor University
Rice University

Crean Lutheran offers a collegiate-model athletic program aimed at developing competitive student-athletes who play for God's glory. Saints athletics is founded upon six core values firmly rooted in the acrostic, CHRIST: Commitment,

Honor, Responsibility, Integrity, Service, and Teamwork. Crean

Lutheran High School is a member of the Empire League in CIF's Southern Section and offers 26 varsity sports.

To ensure student safety and success, CLHS athletics provides multiple services and amenities, including expanded academic support, a comprehensive strength and conditioning program, and a sports medicine program. Additionally, Crean Lutheran's CIF-certified coaching staff assists with the college recruitment process for those student-athletes who desire to compete at the collegiate level.



59%

OF ATHLETES
HAD A GPA OF
3.5 AND ABOVE

12

STUDENTS FROM
THE CLASS OF
2020 SIGNED THEIR
NATIONAL LETTERS
OF INTENT TO PLAY
COLLEGIATE-LEVEL
ATHLETICS



46

LEAGUE TITLES
IN SCHOOL
HISTORY

15

CIF TITLES IN
SCHOOL HISTORY



5

STATE TITLES
IN SCHOOL
HISTORY



STRENGTH & CONDITIONING PROGRAM

All Crean Lutheran athletes have access to collegiate-level weight training in the state-of-the-art Strength & Conditioning Center. Our dedicated strength & conditioning coaches design workouts that emphasize overall optimal athletic performance as well as sport-specific excellence. Even more, the coaches fine tune workouts to meet individual needs, adjusting to level of ability, specific training goals, and injury avoidance/recovery. Our exceptional facilities and knowledgeable coaches help all athletes rise to their full athletic potential.

64%
OF STUDENTS
ARE INVOLVED IN
ATHLETICS

TEAMS

FALL

Football
Girls Tennis
Girls Volleyball
Girls & Boys Cross Country
Girls Golf
Boys Water Polo
Boys Beach Volleyball*

WINTER

Girls Basketball
Boys Basketball
Girls Soccer
Boys Soccer
Girls Water Polo

SPRING

Boys Golf
Baseball
Softball
Girls & Boys Swimming
& Diving
Boys Tennis
Girls & Boys Track & Field
Boys Lacrosse
Competition Cheer/ Stunt
Boys Volleyball
Girls Beach Volleyball*

YEAR ROUND

Sideline Cheer
Song

**Competes in IBVA*

For questions regarding Crean Lutheran High School Athletics, please contact our Athletics Department at athletics@creanlutheran.org.

2019 ATHLETE OF THE YEAR

The OC Register named Tyler Guo the Boys Golf Athlete of the Year for the second consecutive year. Tyler was the first player in 24 years to win back-to-back SCGA So Cal Championships. Tyler is now playing golf at the University of Southern California.





Crean Lutheran High School supports the Visual and Performing Arts (VPA) by developing the individual creative gifts of each artist. In 2020, four CLHS students were named Orange County Artist of the Year semifinalists for Dance and Instrumental Music by the OC Register. CLHS is pleased to provide diverse opportunities for VPA engagement. Students may perform in a variety of settings, including theatrical productions, instrumental concerts, choral concerts, and dance performances. Visual artists are afforded platforms to showcase their talents through exhibitions, both on and off-campus. Additionally, Crean Lutheran High School is committed to providing students with real-world experiences to develop and refine their respective gifts and crafts.



COURSES OFFERED

INSTRUMENTAL MUSIC

Orchestra*
Honors Orchestra*
Honors Chamber Orchestra*
Concert/Pep Band*
Honors Concert/Pep Band*
Honors Chamber Music and Composition*
Jazz Band*
Honors Jazz Band*
Worship Team*
Honors Worship Team*

DANCE

Dance I
Honors Dance II*
Honors Dance III*
Honors Advanced Dance Ensemble*
Honors Advanced Dance Company*
Hip Hop I
Honors Hip Hop II*
Honors Hip Hop III*

DRAMA

Acting for Stage and Camera I
Honors Acting for Stage and Camera II*

CHOIR

Concert Choir*
Honors Concert Choir*
Honors Chamber Choir*
Men's Chorus
Women's Chorus
Handbell Choir
AP Music Theory*

VISUAL ARTS

Photography I
Honors Photography II*
Exploratory Art
Honors Exploratory Art*
Honors Advanced Studio Art*
Honors Drawing & Painting*
Honors Sculpture I*
Honors Sculpture II*
AP Art: Drawing and Painting*
AP Art: 2-D*
AP Art: 3-D*
AP Art History

**Audition Required*

2019 ARTIST OF THE YEAR

Irene Kim was recognized as the OC Register's Dance
Artist of the Year.



APPLICATION STEPS

The Admissions Committee reviews each applicant holistically, taking into account the unique gifts and talents of each student.

STEP 1

Complete the online application and submit the \$60.00 application fee.

There is a link to apply on our website, creanlutheran.org/apply.

STEP 2

Complete the application checklist in the student's application portal.



FINANCIAL ASSISTANCE

Crean Lutheran High School views financial aid as a partnership between families and the school. Financial aid awards are based on financial need and the financial aid funds available. To be considered for financial aid, a family must first apply for admission and then submit a financial aid application, which can be found at creanlutheran.org/admissions.

TUITION & FEES

A summary of tuition and fees can be found at creanlutheran.org/tuition.



BE A SAINT FOR A DAY!

Crean Lutheran High School cordially invites all 8th grade and transfer students interested in attending Crean Lutheran to spend a day on campus. Prospective students will be partnered with student ambassadors who will introduce them to the Crean Lutheran community. To schedule a campus visit, please go to the Shadow Day link found on the Admissions page at creanlutheran.org/admissions.

For any questions regarding admission to Crean Lutheran, please contact the Admissions Director Tara Mathis at (949) 387-1199 ext. 2417 or email at mathis@creanlutheran.org.

For questions regarding international admission, please email int@creanlutheran.org.





CREAN LUTHERAN HIGH SCHOOL

Proclaiming Jesus Christ through Excellence in Education



12500 SAND CANYON AVENUE, IRVINE, CA 92618
(949) 387-1199 • CREANLUTHERAN.ORG