



PINE LAKE PREPARATORY

SCHOOL REOPENING PLAN 2020-2021 ACADEMIC YEAR

TUESDAY, JULY 14TH 2020



Introduction

Pine Lake Preparatory's mission is to prepare students for college and a purposeful life. That remains stronger than ever during these challenging times.

Since early June, our team has been hard at work preparing this Reopening Plan. Please know that our goal has been to get students back to campus as soon as it is safe and practical to do so. When that happens, our goal will then be to keep the doors open through rigorous safety protocols. With that in mind, we have leaned heavily on student, staff and family surveys, board member feedback, local and state level health department guidance and the NC Department of Public Instruction to develop a reopening plan that takes into consideration the health, safety, academic and emotional well-being of our students, families, staff, and the greater community.

I want to make clear that as a community we have an obligation to each other. While talks about school reopening and reopening plans have seemingly divided our state and our country, it will not divide us. We made a commitment to respect and empathy and in this situation, it means respect and empathy for our students, our teachers, our families, our extended families and our community; many of whom may be considered high risk or a vulnerable population. This plan is an attempt to reopen safely. It is not a plan to reopen easier, faster, or more conveniently.

We are excited to share our plan with you and hope it will provide a glimpse into the amount of work and consideration that has already been done and will continue over the remaining weeks of summer break to ensure a safe start of school for our students and staff.

Andrew Mocerì
Executive Director
Pine Lake Preparatory



TABLE OF CONTENTS



1. **#StrongSchoolsNC**
2. **Health and Safety Protocols**
The Three W's - Wear, Wash and Wait
3. Social Distancing and Minimizing Exposure
Cloth Face Coverings
4. Monitoring for Symptoms
5. Coping and Resilience
A Healthy and Clean Campus
6. Effective Communication
Lunch
Transportation
7. **Three Phases of Safety**
8. **Plan A: Minimal Social Distancing**
9. **Plan B: In-Person and eLearning Hybrid**
11. **Plan C: eLearning**
12. **What will daily screening look like each morning?**
13. **How will PLP Handle Suspected, Presumptive, or Confirmed Cases?**
14. **Appendix A: Symptom Attestation Document**



#StayStrongNC

The North Carolina Department of Public Instruction (NCDPI) in collaboration with the NC Department of Health and Human Services (NCDHHS) recently published StrongSchoolsNC which provided guidance to NC schools. In it, they explained that COVID-19 is mostly spread by respiratory droplets released when people talk, cough or sneeze. The virus may spread to hands from a contaminated surface and then to the nose, or mouth, causing infection. That's why personal prevention practices (such as hand-washing and staying home when sick) and environmental cleaning disinfection are important practices.

Any scenario in which people gather together poses a risk for COVID-19 transmission. Symptoms may appear in 2-14 days after exposure to the virus. People with these symptoms may have COVID-19:

- Fever or chills
- Shortness of breath or difficulty breathing
- New loss of taste or smell
- Congestion or runny nose
- Cough
- Fatigue
- Muscle or body aches
- Sore throat
- Headache

This list does not include all possible symptoms. Other less common symptoms have been reported, including gastrointestinal symptoms like nausea, vomiting, or diarrhea. Fever is determined by measuring a temperature of 100.3 degrees Fahrenheit or greater, feeling warm to the touch, or given a history of feeling feverish. While symptoms in children are similar to adults, children may have milder symptoms. Possible symptoms in children include cold-like symptoms, such as fever, runny nose, and cough. Children with COVID-19 may not initially present with fever and cough as often as adult patients.

Available Resources

[StrongSchoolsNC: Public Health Toolkit](#)

[NC Department of Health and Human Services](#)

[Center for Disease Control: Coronavirus \(COVID-19\)](#)

[American Academy of Pediatrics](#)

Pine Lake Preparatory

Health and Safety Protocols

The Pine Lake Preparatory Health and Safety Protocols have been developed to support a safe and healthy campus for the 2020-2021 school year. The ability to open our doors, and keep them open, will rely on a community effort to support and adhere to each guideline. These protocols will be in place during in-person/on-campus instruction under both Plan A and Plan B.

1. The 3 W's - Wear, Wait and Wash.

Signage displaying the 3 W's will be displayed around campus as Pine Lake Preparatory seeks to create a culture around: Wear, Wait, and Wash.

- Wear a cloth covering if you will be with other people.
- Wait 6 feet apart. Avoid close contact with your peers.
- Wash your hands often with soap and water for at least 20 seconds or use hand sanitizer.

These are critical steps in protecting our students, staff and families as we work towards easing restrictions while the virus is still spreading. We encourage you to use a similar message at home to help reinforce these safety protocols for us at PLP.



WEAR

a cloth covering over
your nose and mouth.



WAIT

6 feet apart. Avoid
close contact.



WASH

your hands or
use hand sanitizer.

2. Social Distancing and Minimizing Exposure

Social distancing is, and will continue to be, a key tool in decreasing the spread of COVID-19. As a school community we will do our part to ensure we are creating campus, building and classroom accommodations that make this possible.

- Classrooms will be redesigned to facilitate appropriate distancing while remaining both welcoming and conducive to instruction.
- Strategic markings in the middle school, upper school, STEM Building and Fine Arts building will make hallways one-way, in addition to utilizing separate doors for entering and exiting during arrival, dismissal and class change.
- In grades K-8, students will be kept, to the best of our ability, in cohort groups that stay together as much as possible during the day. Schedules, rosters, room usage and instructional design have been strategically created to limit interactions between cohorts.
- While many large group activities or field trips will be discontinued or postponed, PLP will incorporate virtual events such as field trips, parents/family meetings, assemblies and performances where possible until we feel it is safe to bring larger groups together.
- Social distancing floor/seating markings will be evident in each building lobby for visitors.
- Common spaces, restrooms, and locker rooms will all have necessary distancing markings.
- Nonessential visitors will be limited.
- New arrival and dismissal structures will be in place to avoid congregation.

3. Cloth Face Coverings

COVID-19 spreads mainly from person to person through respiratory droplets produced when an infected person coughs, sneezes, or talks. There is growing evidence that wearing a face covering helps to reduce the spread of COVID-19. While community members who are sick or know that they have COVID-19 will be at home, COVID-19 can be spread by people who are asymptomatic.

Cloth face coverings will be required for all school staff, adult visitors, and all lower, middle and high school students. Face coverings must be worn by students and staff inside school buildings, and anywhere on campus, including outside. Masks may also be removed during lunch time. The face coverings will also be required during arrival and dismissal while traveling on a school bus. A medical exemption from a physician will be the exception.

The cloth face covering recommendation is in line with CDC which recommends all people over the age of 2 years old to wear a cloth face covering in public settings and when around people who don't live in your household. The cloth face coverings are both a sign of respect and empathy for the teachers, students and community members on campus who may be considered a high risk, or vulnerable population.

Please note, we will work closely with our families of students with disabilities to establish a plan that is conducive to the individual needs of the student.

Available Resources

[How to Safely Wear and Take Off a Cloth Face Covering](#)

[Use of Cloth Face Coverings to Help Slow the Spread of COVID-19](#)

[Best Practices for Masks: Considerations for People with Disabilities and Special Health Needs](#)

4. Monitoring for Symptoms

Daily screening for symptoms can help reduce the potential exposure of COVID-19. Pine Lake Preparatory will conduct symptom screening of all students, staff, family members and visitors entering the building. Symptom screening will include temperature checks and a symptom attestation which will be required daily, prior to entering a school building or boarding a bus.

- Any student, staff, family member or visitor who is symptomatic during the screening or at any point during school and/or a school sponsored event will be relocated to a designated space to wait for a ride home.
 - Fever is determined by a measured temperature of 100.3 degrees Fahrenheit or greater.
- PLP will use a touchless thermometer for all temperature screenings.
- Lower School families will complete the attestation document at home and hand it to a staff member during arrival when the student's temperature is being taken.
 - See Appendix A.
- A formal process will be established at each building entrance to facilitate distancing while we screen students swiftly and appropriately.

It is important to understand that Pine Lake Preparatory will adhere to the following process for allowing a student or staff member to return to school:

- If a person has had a negative COVID-19 test, they can return to school once there is no fever without the use of fever-reducing medicines and they have felt well for 24 hours.
- If a person is diagnosed with COVID-19 by a medical professional based on a test or their symptoms or does not get a COVID-19 test but has had symptoms, they should not be at school and must stay at home until they (or a family member if younger child) can answer YES to the following three questions:
 1. Has it been at least 10 days since the individual first had a symptom?
 2. Has it been at least 3 days since the individual had a fever (without using fever reducing medicine)?
 3. Has it been at least 3 days since the individual's symptoms have improved, including cough and shortness of breath?
- In the event that a student or staff member tests positive for COVID-19 and was in the school setting while infectious, PLP administration will work with Iredell Health Officials to notify staff and families while maintaining appropriate privacy and confidentiality of the individual.
- If a student/employee has been diagnosed with COVID-19 but does not have symptoms, they must remain out of school until 10 days have passed since the date of their first positive COVID-19 test.
- Please recognize that remote learning options for students unable to be at school due to illness or exposure will be in place.
- An attendance code has been created specific to COVID-19 or COVID-19 related symptoms and will be used by PLP to designate excused absences. These excused absences will not require "make-up time" for Upper School students as outlined in the Attendance Policy.

What will daily screening look like each morning?

See Page 12 for the Screening Flow Chart

5. Coping and Resilience

This is a stressful time for many. While COVID-19 is an infectious virus with potential implications to one's physical well-being, we also understand that it has potential implications from a social emotional standpoint. As we prepare for a year that will hold uncertainty, excitement, anxiety and other emotions, it is important to know that we will work tirelessly to support both the physical and social/emotional well-being of our students, staff and families.

Available Resources

[Hope4NC Helpline](#)

[Dial 211](#)

[NCCares360](#)

[Milk and Honey Counseling](#)

[Integrative Wellness Solutions](#)

CALL: 1-844-5-SAYNOW or 1-844-572-9669

www.saysomething.net

We would also invite you to visit the COVID-19 page at PineLakePrep.org for additional resources related to food/meal support, internet access/support, as well as unemployment benefit information and resources for families. We are committed to working together to support our students, staff, families and community. Many of our teachers will be receiving special training in Emotional Integration which helps to equip them to identify students and colleagues that may be struggling with stress and anxiety due to trauma caused by recent events.

6. A Healthy and Clean Campus

Reopening Pine Lake Preparatory will require a community effort to practice social distancing and other daily habits to reduce our risk of exposure to the COVID-19 virus. A healthy community is reliant on conscientious hygienic practices and the purposeful cleaning and disinfecting of each of our buildings and common spaces.

Pine Lake Preparatory has recently restructured our maintenance and cleaning teams to ensure a routine cleaning and disinfection of high touch areas is taking place throughout the day. Bathrooms are included in these high touch areas and will be cleaned frequently. In addition to our increased cleaning, electrostatic sprayers will be used outside of the school day to provide an even greater level of disinfecting.

We encourage students to carry their own water bottle daily. While we will have water bottle fillers available in each building, we will be disconnecting our traditional water fountains.

Within the classroom, we will limit sharing of personal items and school supplies (writing utensils, scissors, glue sticks, crayons, markers, etc.) and students will keep personal items separate. Outside of necessary school supplies, other personal belongings should be kept at home. While we will teach and reinforce hand-washing with soap and water for at least 20 seconds and/or the use of hand sanitizer we ask that you create a similar and common practice at home. Students should be encouraged to cough and sneeze into their elbows, or to cover with tissue. Used tissue should be thrown in the trash and hands washed immediately with soap and water for at least 20 seconds.

7. Effective Communication

In an effort to facilitate appropriate levels of communication, we have designated administrative teams in each building to be the COVID-19 point of contact. In the event that your student has been diagnosed, exhibits symptoms of, or has been exposed to the virus, we ask that you contact the appropriate team:

Lower School:

Shelly Sims (Principal) – Shelly.Sims@PineLakePrep.org

Jeff Burr (Asst. Principal) – Jeff.Burr@PineLakePrep.org

Middle School:

Sam Ranallo (Principal) – Sam.Ranallo@PineLakePrep.org

Lauri Schatz (Asst. Principal) – Lauri.Schatz@PineLakePrep.org

Upper School:

Dr. Tim Hoffman (Principal) – Tim.Hoffman@PineLakePrep.org

Lori Reuter (Asst. Principal) – Lori.Reuter@PineLakePrep.org

These teams will work with our school nurses and the local health department to support your family while ensuring a safe and healthy campus.

School Nurses:

Rebecca Long – Rebecca.Long@PineLakePrep.org

Alexandra Larson – Alexandra.Larson@PineLakePrep.org

Please understand that we take comfort in our shared values as we will all continue to make sure that we support each other with care, dignity and respect. We will also maintain appropriate privacy and confidentiality.

8. Lunch

Lunches will be eaten within the classroom or in a designated space provided by the teacher. In addition to the classrooms, Pine Lake has created several additional outdoor areas where cohorts will be invited to eat on a rotating basis. We will continue to offer "hot lunch" options which will be delivered to your child by a staff member or volunteer utilizing safety protocols.

9. Transportation

Pine Lake Preparatory hopes to run morning and afternoon buses at reduced capacity and will follow necessary state safety guidelines for providing public transportation during this time. Additionally, PLP will:

- Follow the symptom screening protocols for all students, prior to boarding school transportation. This will include the temperature check and symptom attestation.
- Only allow one passenger per seat with the exception of family members who will be asked to share a seat.
- Require all students to wear a cloth face covering.
- Keep windows open while the vehicle is in motion to help reduce spread of the virus by increasing air circulation, when appropriate and safe.
- Sanitize each bus following a run/route.

It is possible, and even likely that due to the required health and safety precautions we will not be able to meet the typical demand. We will release a survey to identify your family's intention to utilize school transportation so that we may begin to finalize transportation plans. As in years past, we will start with families who have previously utilized the service and if spots remain we will open it up. If demand exceeds availability, we will hold a lottery for the available seats.



Three Phases of Safety

The Governor's Office and NCDHHS, in consultation with the North Carolina State Board of Education and the North Carolina Department of Public Instruction, will determine how Pine Lake Preparatory can reopen safely for the 2020-2021 school year. A combination of metrics is used to determine NC's progress in combating COVID-19 and guide the state's path forward.

Plan A:

Minimal Social Distancing

Plan A is the least restrictive of the three plans. Pine Lake Preparatory will operate at 100% capacity with all Safety Protocols in place.

Plan B:

In-Person and eLearning

Under Plan B, we will be operating at a limited capacity - 50%. Safety Protocols will be in place and we will run a hybrid schedule that would include both face-to-face instruction and remote learning each week for all Upper, Middle and Lower School students.

Plan C:

eLearning

PLP would suspend in-person instruction and implement remote instruction, as was done this spring.

It is important to understand that Pine Lake Preparatory may choose to implement a more restrictive Plan at any point, but may not choose to implement a less restrictive Plan than established by the NCDHHS, NCSBE, and NCDPI. While PLP's goal will be the least restrictive environment allowable, we will prioritize:

- **Keeping students and staff physically safe**
- **Optimizing educational value**
- **Supporting the social/emotional needs of our students**

More plainly, we will prioritize physical safety, educational value and supporting the social/emotional needs of our students even over, prematurely entering a least restrictive plan/environment. It is important to understand that PLP may/will move between phases throughout the year.

Plan A: Minimal Social Distancing

Pine Lake Preparatory will operate at 100% capacity with all Safety Protocols in place to support a safe and healthy campus.

Bell Schedule

SCHOOL	START TIME	END TIME	DOORS OPEN
Lower School	7:45 am	2:30 pm	7:15 am
Middle School	8:15 am	3:15 pm	7:30 am
Upper School	7:20 am	2:55 pm	7:00 am

The Daily Experience

Plan A would look most similar to the traditional school day at Pine Lake Preparatory.

Lower School:

- Students will have English/Language Arts, Spanish, Social Studies, Science and Math each day.
- A rotation of encores will include STEM, Literacy, Music, Visual Arts, Technology and Physical Education.
- Students will participate in recess each day as traditionally run.
- Lower School doors will open each day at 7:15 am. Early care will be available exclusively for LS students with US siblings starting at 7:00 am.
- Kindergarten K-Wave: Families should arrive to pick up at 1:50 pm and will load between 1:55 pm and 2:05 pm. This helps us ensure the continued flow of traffic each afternoon.

Middle School:

- Students will have seven classes per day: English/Language Arts, Spanish, Social Studies, Science, Math, Healthful Living/PE and an elective.
 - Electives will include a rotation of Visual Arts, Music, Theatre Arts and STEM.
 - Electives will rotate each of the four quarters.
- Classes will be 50-60 minutes each.
- Students will remain in like-cohorts throughout the day.
- To ensure appropriate distancing, lockers will not be utilized.
- Middle School doors will open each day at 7:30 am. Early care will be available exclusively for MS students with US siblings starting at 7:10 am.

Upper School:

- Students will be enrolled in seven classes per day (rather than 8) in an attempt to increase instructional time per class. We will work with students to meet their goals/needs as it relates to a schedule and/or transcript.
- Classes will be 55 minutes each.
- All Seniors with a valid Pine Lake Preparatory parking pass will be assigned a parking spot on campus. All Juniors with a valid parking pass will be assigned a parking spot at the Cove Church.

Plan B: In-Person and Remote Hybrid

Pine Lake Preparatory will operate at 50% capacity with students engaging in a hybrid of in-person instruction and remote learning. All Pine Lake Preparatory health and safety protocols will be in place.

The Hybrid Model

Pine Lake Preparatory will be operating at 50% capacity with students coming into the school buildings on alternating days. While half of our students would be on campus experiencing face-to-face instruction, the other half would be accessing course content remotely. The goal of a hybrid model is to take advantage of the value of face-to-face instruction while also ensuring there is adequate room for social distancing in the building/classroom. All students will be working independently on Wednesdays while buildings are deep cleaned. We will also utilize Wednesdays for remediation, tutoring, office hours, teacher planning and professional development.

MONDAY	TUESDAY	WEDNESDAY	THURSDAY	FRIDAY
Group 1: On Campus	Group 1: On Campus	Deep Cleaning, Remediation, Tutoring, Office Hours, etc.	Group 2: On Campus	Group 2: On Campus
Group 2: At Home Asynchronous Learning	Group 2: At Home Asynchronous Learning	Group 1 / 2: At Home Asynchronous Learning	Group 1: At Home Asynchronous Learning	Group 1: At Home Asynchronous Learning

*There will be a few exceptions denoted on the Plan B Calendar which will be provided.

Bell Schedule

SCHOOL	START TIME	END TIME	DOORS OPEN
Lower School	8:15 am	3:00 pm	7:30 am
Middle School	8:00 am	3:20 pm	7:30 am
Upper School	8:00 am	3:20 pm	7:30 am

The Daily Experience

Our number one priority when designing the Group 1 and Group 2 schedule was to ensure that, to the best of our ability, all siblings (k-12) were assigned to the same day. With a limited capacity on campus, and siblings on like days, we have shifted building start times closer to avoid large groups each morning and afternoon. After students enter the building they will report to their first period class.

Lower School:

- Students will have English/Language Arts, Social Studies, Science and Math each day.
- A rotation of encores will include Spanish, STEM, Literacy, Music, Visual Arts and Physical Education.
- Students will go outside for recess daily.
- There will be no K-Wave under a Plan B.

Plan B: In-Person and Remote Hybrid

Pine Lake Preparatory will operate at 50% capacity with students engaging in a hybrid of in-person instruction and remote learning. All Pine Lake Preparatory health and safety protocols will be in place.

The Daily Experience (continued)

Middle School:

- Students will have seven classes per day: English/Language Arts, Spanish, Social Studies, Science, Math, Healthful Living/PE and an elective.
 - Electives will include a rotation of Visual Arts, Music, Theatre Arts and STEM.
 - Electives will rotate each quarter.
- Classes will be 55 minutes each.
- Students will remain in like-cohorts throughout the day with minimal class changes. When possible teachers will be rotating and students will use the same classroom throughout the day.
- Remote learning days will be self-paced/asynchronous work that will be accessible via Canvas.
- To ensure appropriate distancing, lockers will not be utilized.

Upper School:

- Students will be enrolled in seven classes per day (rather than 8) in an attempt to increase instructional time per class. We will work with students to meet their goals/needs as it relates to a schedule and/or transcript.
- Classes will be 55 minutes each.
- Remote learning days will be self-paced/asynchronous work that will be accessible via Canvas.
- All Juniors and Seniors with a valid Pine Lake Preparatory parking pass will be assigned a parking spot on campus during Plan B.

Plan C: eLearning

On campus instruction will be suspended and students will engage in eLearning remotely.

eLearning at PLP

Students will not physically report to school, but will engage in learning activities using Canvas, Zoom and other digital resources during a specified timeframe. Lower School students will participate in both synchronous and asynchronous learning each week, while Middle and Upper school students will participate in synchronous classes each day.

A Week at a Glance

Middle and Upper School students will be enrolled in seven classes and operate on an A-day / B-day schedule from 8:00 am until 12:00 noon, Monday through Friday. It is important to understand that the A-day / B-day rotation will be every other day, five days a week, and consequently will not fall on the same day of the week each week. A Plan C Calendar will be provided to detail the A-day / B-day schedule for the year. Students will have 7 classes plus an X Block: A-day (1st, 2nd, 3rd, and 4th blocks) and B-day (5th, 6th, 7th, and X block). The X Block will be a rotation of each course (1st period - 7th period) to provide additional instructional time in each course.

START TIME	START TIME	END TIME	DURATION	ATTENDANCE	TARDY	ABSENT
1st / 5th Block	8:00 am	8:50 am	50 Minutes	8:05 am	8:10 am	8:25 am
2nd / 6th Block	9:00 am	9:50 am	50 Minutes	9:05 am	9:10 am	9:25 am
3rd / 7th Block	10:00 am	10:50 am	50 Minutes	10:05 am	10:10 am	10:25 am
4th / X Block	11:00 am	11:50 am	50 Minutes	11:05 am	11:10 am	11:25 am

Middle and Upper School staff will have office hours from 1:00 pm - 3:00 pm Monday - Friday when school is in session.

Lower School students will engage in both synchronous face-to-face learning (virtually), and asynchronous learning each week. Families should expect a minimum of:

Kindergarten - 1st grade: Three 30 minutes whole group sessions in addition to two small group sessions each week.

2nd Grade: Three 45 minute whole group sessions in addition to two small group sessions each week.

Third - Fifth Grade: Daily whole group and/or small group sessions.

Lower School staff will be available from 8:00 am - 3:00 pm when school is in session.

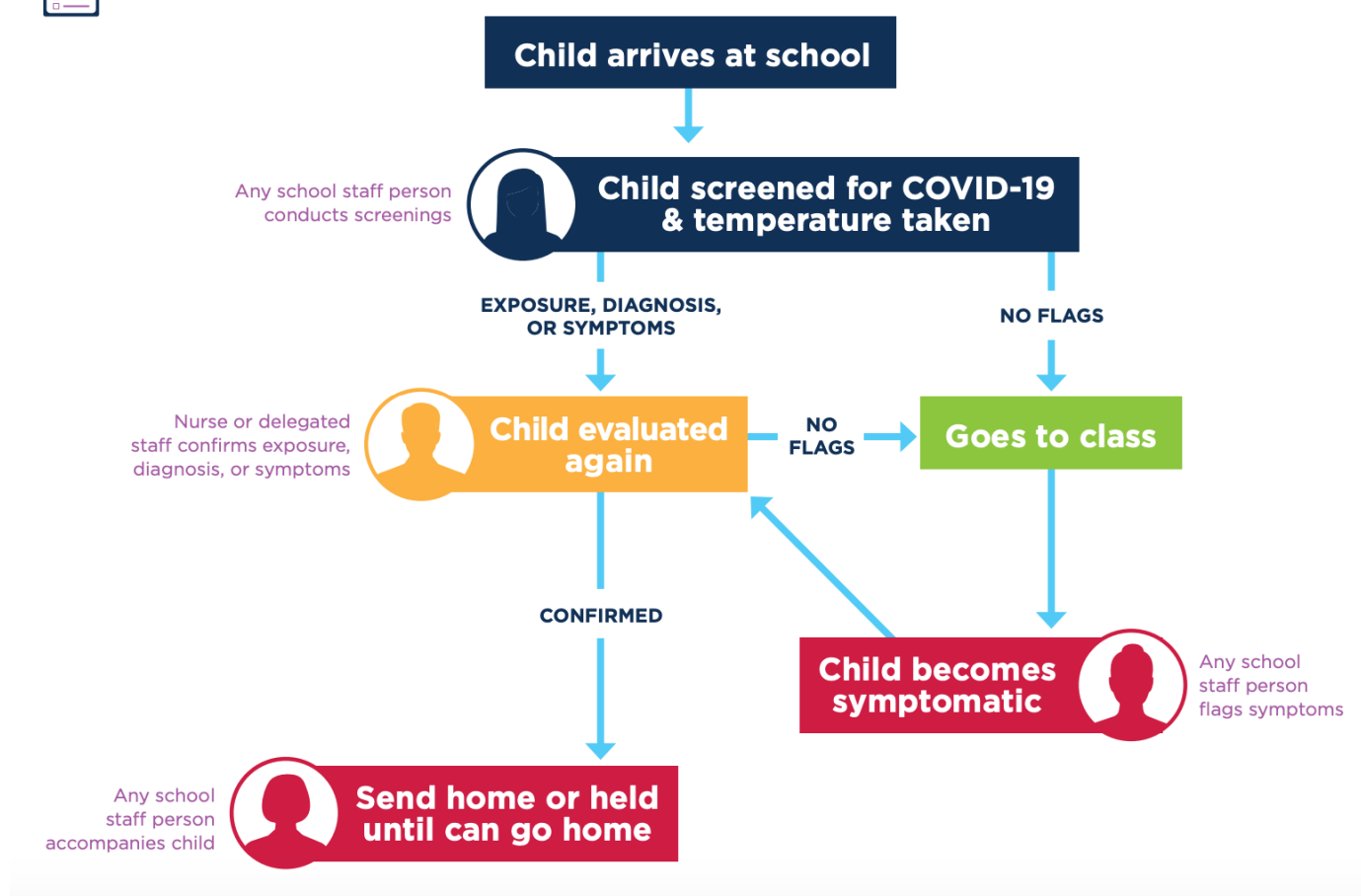
What will daily screening look like each morning?

Pine Lake Preparatory will follow the North Carolina Health and Human Services guidelines for screening students.

Daily Screening for COVID-19



Staff Roles Flow Chart



Lower School students will be screened before exiting their vehicle in carline. The Parent or guardian will be responsible for submitting the daily attestation document and a temperature will be taken. Attestation documents will be sent home with families each month.

Middle and Upper School students will be screened before entering the building. The student will be responsible for verbally attesting to the symptom list and a temperature will be taken prior to entering the building.

Attestation / Screening Questions Include:

- *Have you had close contact (within 6 feet for at least 15 minutes) in the past 14 days with someone diagnosed with COVID-19, or has any health department or health care provider been in contact with you and advised you to quarantine?*
- *Since you were last at school, have you had any of these symptoms: Fever, chills, shortness of breath or difficulty breathing, new cough, new loss of taste or smell?*
- *Since you were last at school, have you been diagnosed with COVID-19?*

How will Pine Lake Preparatory Handle Suspected, Presumptive, or Confirmed Cases?

Pine Lake Preparatory will follow the North Carolina Health and Human Services guidelines when handling suspected, presumptive, or confirmed cases.

Communication with students, staff and families

Pine Lake Preparatory will coordinate with the Local Health Department to determine how to inform families and staff as appropriate.

If positive COVID-19 test:

- The Local Health Department will assist in notifying staff and families that there was an individual who was at the school who has tested positive with COVID-19.
- A public health professional may contact staff and families if they are identified as a close contact to the individual who tested positive.
- The notice to staff and families will maintain confidentiality in accordance with NCGS § 130A-143 and all other state and federal laws.

Local Health Department Next Steps

- The Local Health Department staff will interview the person who tested positive for COVID-19 (or their family member, if it is a young child). As part of the interview, public health staff will identify individuals who were in close contact (defined as within 6 feet for 15 minutes or longer).
- Public health staff will attempt to reach out to close contacts and inform them that they need to quarantine at home for 14 days after their last contact with the person who tested positive for COVID-19.
- Public health staff will recommend the close contacts be tested to identify additional positive cases.
- Public health staff will share that close contacts testing negative will still need to complete the full original 14 day quarantine



Appendix A: Symptom Attestation Document

Lower School students will need to complete and submit the written attestation daily. Pine Lake Preparatory will provide copies for families.



Have you had close contact (within 6 feet for at least 15 minutes) in the last 14 days with someone diagnosed with COVID-19, or has any health department or health care provider been in contact with you and advised you to quarantine?

☐ Yes - The person should not be at school. The person can return 14 days after the last time they had close contact with someone with COVID-19, or as listed below.

☐ No - The person can be at school if they are not experiencing symptoms.

Since you were last at school, have you had any of these symptoms?

- ☐ o Fever
- ☐ o Chills
- ☐ o Shortness of breath or difficulty breathing
- ☐ o New cough
- ☐ o New loss of taste or smell

☐ Yes - If a person has any of these symptoms, they should go home, stay away from other people, and call their health care provider

☐ No - The person can be at school if they are not experiencing symptoms

Since you were last at school, have you been diagnosed with COVID-19?

☐ Yes - If a person is diagnosed with COVID-19 based on a test, their symptoms, or does not get a COVID-19 test but has had symptoms, they should not be at school and should stay at home.

☐ No - The person can be at school if they are not experiencing symptoms

Parent/Guardian Initial: _____