

Colnbrook C. of E. Primary School

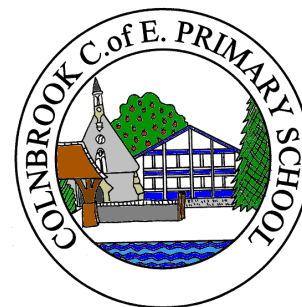
High Street, Colnbrook, Berkshire, SL3 0JZ

Tel: 01753 683661

Email: mail@colnbrookprimary.com

Website: www.colnbrookprimary.com

Headteacher: Mr Tom Brunson B.A.(Hons), PGCE



Newsletter

18th September 2020

Believe and Achieve

Our focus value is: **Aspiration**

A message from the Headteacher

Dear Parents and carers,

I look forward to visiting each class bubble every week to lead collective worship. This week, in Year 1 to 6, I shared a story from the Bible about Daniel and the lion's den. In our lives it is sometimes difficult to stand up for what we believe is right, when everyone around us is doing something else. The story of Daniel highlights this point perfectly. Why not ask your child if they can remember the story and what it means for us?

Standing up for what you believe in is a crucial part of our school vision, and our motto "Believe and Achieve", is so special and important for everyone in our school community. Helping children to believe in themselves and have solid values is fundamental to success in life. Next week, we will look more at this term's focus value, aspiration. Enjoy your weekend,

Mr T. Brunson
Headteacher

Attendance

Year 1	99.05%
Year 3	97.74%
Year 5	93.53%
Nursery AM	90.00%
Nursery PM	88.89%
Year 6	87.86%
Reception	84.41%
Year 4	84.02%
Year 2	83.00%



As part of our learning about our earth, Reception class helped make an erupting volcano and were mesmerised watching the explosion. (Fzz!!!!!!).

Mrs Barker

Reception Class - Year 6 Flu Immunisations Tuesday 13th October

An email was sent to all parents yesterday with an attached letter regarding the above.

Please follow the instructions and complete the form online. Thank you.

Parental Signature Booklets

In order to update our records, please ensure that you complete the booklet in full that was sent home last week, and return by 30th September. You will then be entered into a draw for a £20 Amazon voucher.

It is very important that we have up to date information regarding your child in case of an emergency.

Thank you.

Star of the Week

Reception	- Zain
Year 1	- Angel
Year 2	- Basil
Year 3	- Meera
Year 4	- Alayana
Year 5	- Elektra
Year 6	- Shya
LRU	- Connor

Worship Section

A passage to unpack

Mark 4 v 30-32

Find the book of Mark in the New Testament, find Chapter 4 and read verses 30 to 32.



How does a Kingdom grow?

If God's Kingdom is anywhere that God is in charge, then how does it grow? Just like we can invite God to take charge in our lives, we can encourage others to do the same. As Christians we have a special mission, to tell others the Good News about Jesus' dying and coming back to life for us so that all of us can come close to God.

Can you think of some friends who don't yet know Jesus as their friend? Pray and ask God to help you to be bold in sharing his love with them. Pray that they would become a friend of God.

Write their names or draw them here.



We can pray and ask God to give us more faith to live our daily lives and more faith to pray

"your kingdom come; your will be done"

just like Jesus did in his Lord's prayer.

This passage is a parable, a story told by Jesus with a message.

In the passage Jesus talks about what God's Kingdom is like. It starts as a tiny seed. Draw what it grows into here...

Before

O

Jesus also talked about mustard seeds elsewhere in the Bible. You can find this verse in the book of Matthew, Chapter 17 and Verse 20.

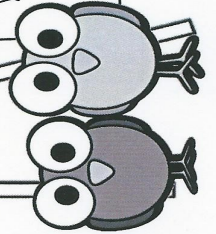
"If your faith is as big as a mustard seed, you can say to this mountain, 'Move from here to there,' and it will move."

If you had to give your faith a size... how big would it be? Draw an object which is a similar size here:

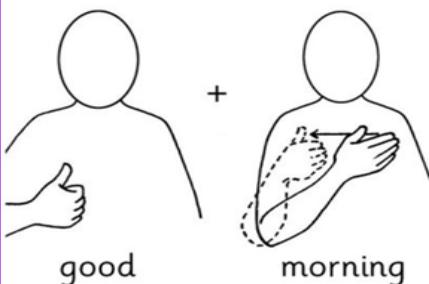
After

The Wild Birds

When Jesus talked about the birds sitting in the mustard tree he meant everybody who hears the good news. The people listening at the time would have been surprised to hear that the good news was for everybody, not just the Jewish people. Why not be bold and pray for somebody you don't like very much that they would join God's Kingdom too!



Makaton Signs



UNIFORM

If you have any uniform requirements, please complete a form from main reception. Thank you.



COVID-19 (Coronavirus)

A quick guide for parents/carers

What to do if...

...my child has COVID-19 (coronavirus) symptoms*



Action needed

- Child shouldn't attend school
- Child should get a test
- Whole household self-isolates while waiting for test results
- Inform school immediately about test results

Back to school...

...if a child's test comes back negative and symptom free for 48 hours. The child should not be tested again unless they develop new symptoms*

If the test result is positive, then see below.

...my child tests positive for COVID-19 (coronavirus)



- Child should not attend school
- Child self-isolates for at least 10 days from when symptoms* started (or from day of test if no symptoms)
- Inform school immediately about test results
- Whole household self-isolates for 14 days from day when symptoms* started (or from day of test if no symptoms) – even if someone tests negative during those 14 days
- Other household members should not get tested unless they develop symptoms because even if they tested negative, they must still isolate for 14 days

...after 10 days has passed so long as the child is feeling better and has been without a fever for at least 48 hours.

They can return to school after 10 days even if they still have a cough or loss of smell/taste. These symptoms can last for several weeks once the infection is gone.

...somebody in my household has COVID-19 (coronavirus) symptoms*



- Child shouldn't attend school
- Household member with symptoms should get a test
- Whole household self-isolates while waiting for test result
- Inform school immediately about test results

...if the household member test is negative, and the child does not have COVID-19 symptoms*

...somebody in my household has tested positive for COVID-19 (coronavirus)



- Child shouldn't attend school
- Whole household self-isolates for 14 days from day when symptoms* started (or from day of test if no symptoms) – even if someone tests negative during those 14 days
- No need for the child to get tested unless they develop symptoms

...when child has completed 14 days of self-isolation, even if they tested negative during the 14 days

...NHS Test and Trace has identified my child as a 'close contact' of somebody with symptoms* or confirmed COVID-19 (coronavirus)



- Child shouldn't attend school
- Child self-isolates for 14 days (as advised by NHS Test and Trace) – even if they tested negative during those 14 days
- Rest of household does not need to self-isolate, unless they are a 'close contact' too

...when the child has completed 14 days of self-isolation, even if they tested negative during those 14 days

...we/my child has travelled and has to self-isolate as part of a period of quarantine



- Do not take unauthorised leave in term time
- Consider quarantine requirements and FCO advise when booking travel
- Provide information to school as per attendance policy

Returning from a destination where quarantine is needed:

- Child shouldn't attend school
- Whole household self-isolates for 14 days – even if they test negative during those 14 days

...when the quarantine period of 14 days has been completed for the child, even if they test negative during those 14 days

...we have received advice from a medical/official source that my child must resume shielding



- Child shouldn't attend school
- Contact school as advised by attendance officer/pastoral team
- Child should shield until you are informed that their restrictions are lifted, and shielding is paused again

....when school/other agencies inform you that restrictions have been lifted and your child can return to school again

...I am not sure who should get a test for COVID-19 (coronavirus)



- Only people with symptoms* need to get a test
- People without symptoms are not advised to get a test, even if they are a 'close contact' of someone who tested positive

....when conditions above as matching your situation, are met

*Symptoms include a high temperature, a new continuous cough and loss or change to your sense of smell or taste. See more at www.nhs.uk/coronavirus

For further information: gmhscp.contracttracing@nhs.net
www.gov.uk/backtoschool

New Government Guidance:

Only six people from multiple households can now meet up for social gathering, both indoors and outdoors. For more information please visit: www.gov.uk/coronavirus

For more information contact us on publichealthslough@slough.gov.uk

#OneSlough



www.slough.gov.uk
Slough
Borough Council