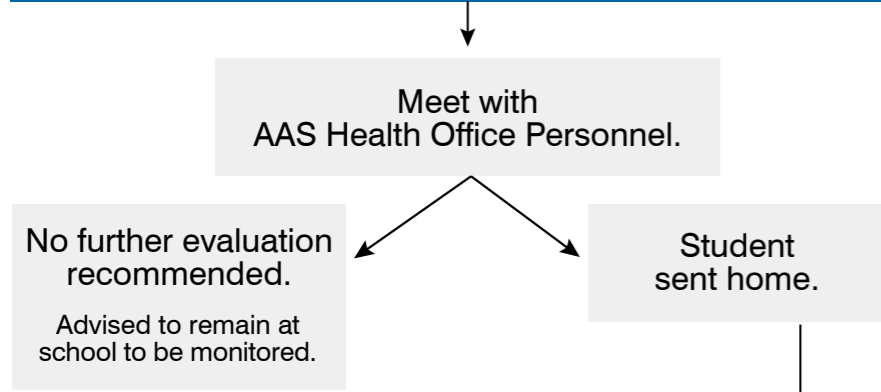
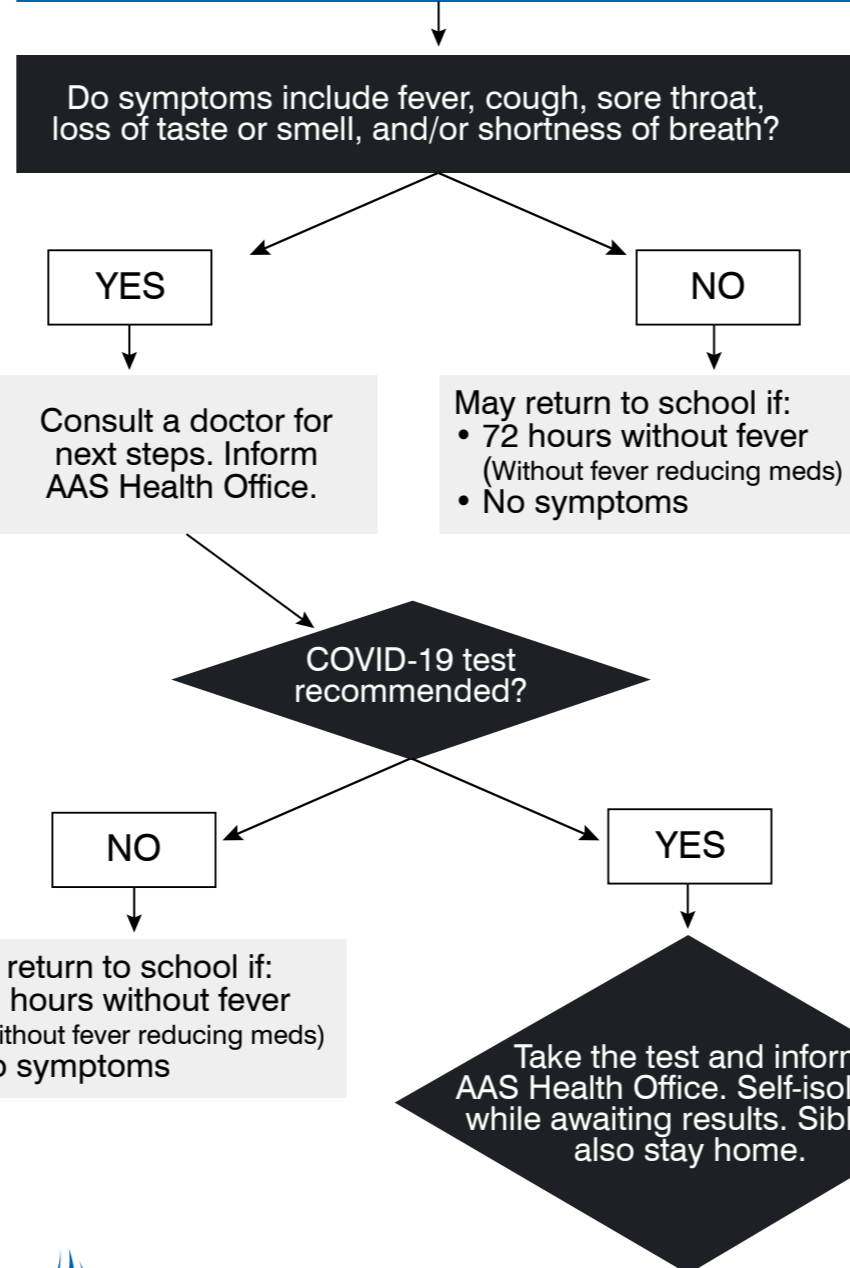


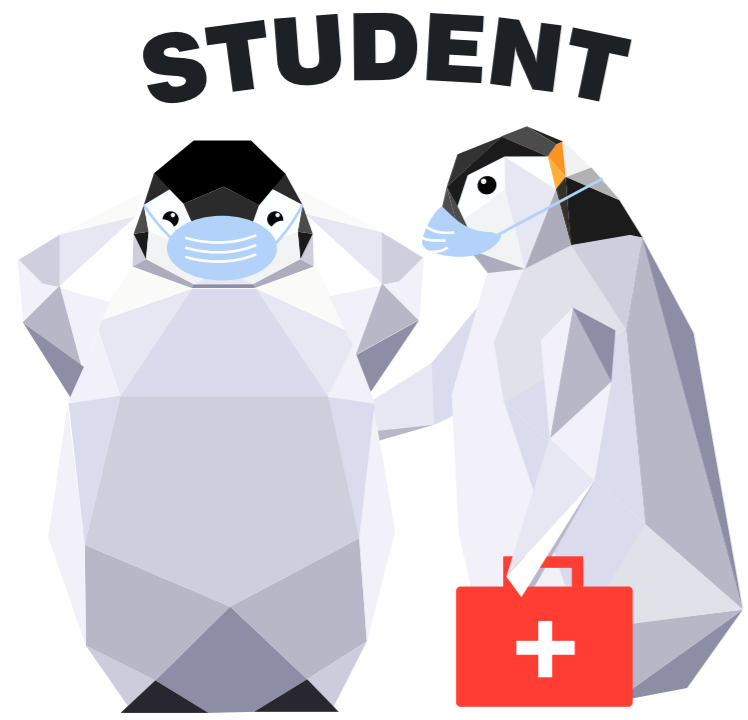
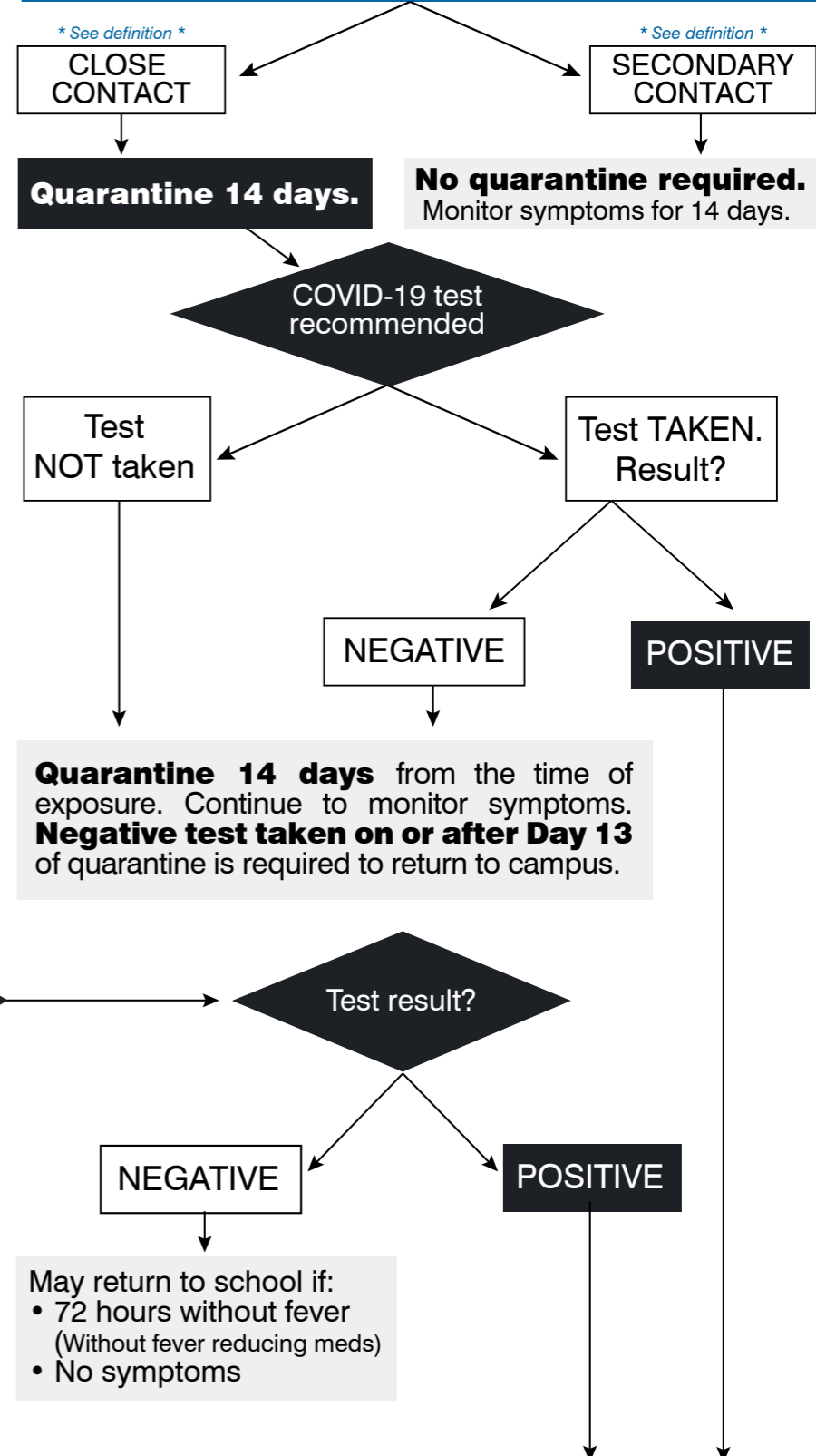
AAS STUDENT FEELS SICK OR HAS FEVER AT SCHOOL



AAS STUDENT IS SICK AT HOME



AAS STUDENT HAD CONTACT WITH CONFIRMED COVID-19 CASE



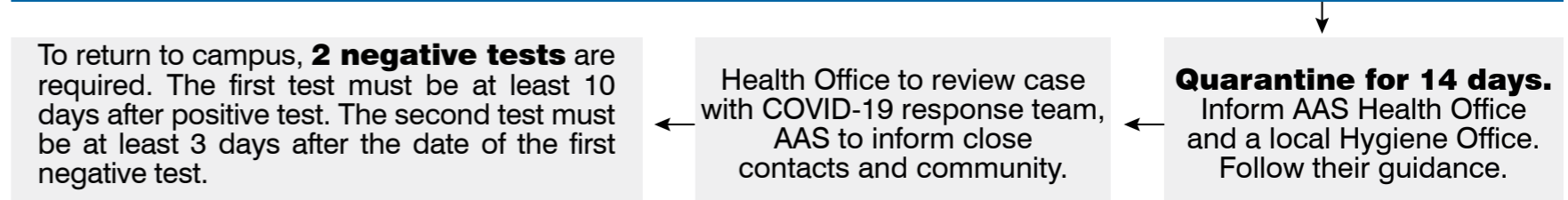
STUDENT COVID-19 RESPONSE FLOWCHART



Definitions

Close contact	direct contact with anyone who has a confirmed COVID-19 case *Regardless of wearing a mask
Secondary contact	anyone that came in contact with a known close contact
Quarantine	separate and restrict the movement of people who were exposed to a contagious disease to see if they become sick / separate someone known to be sick from others (who are not sick)

COVID-19 POSITIVE TEST IS REPORTED



To return to campus, **2 negative tests** are required. The first test must be at least 10 days after positive test. The second test must be at least 3 days after the date of the first negative test.