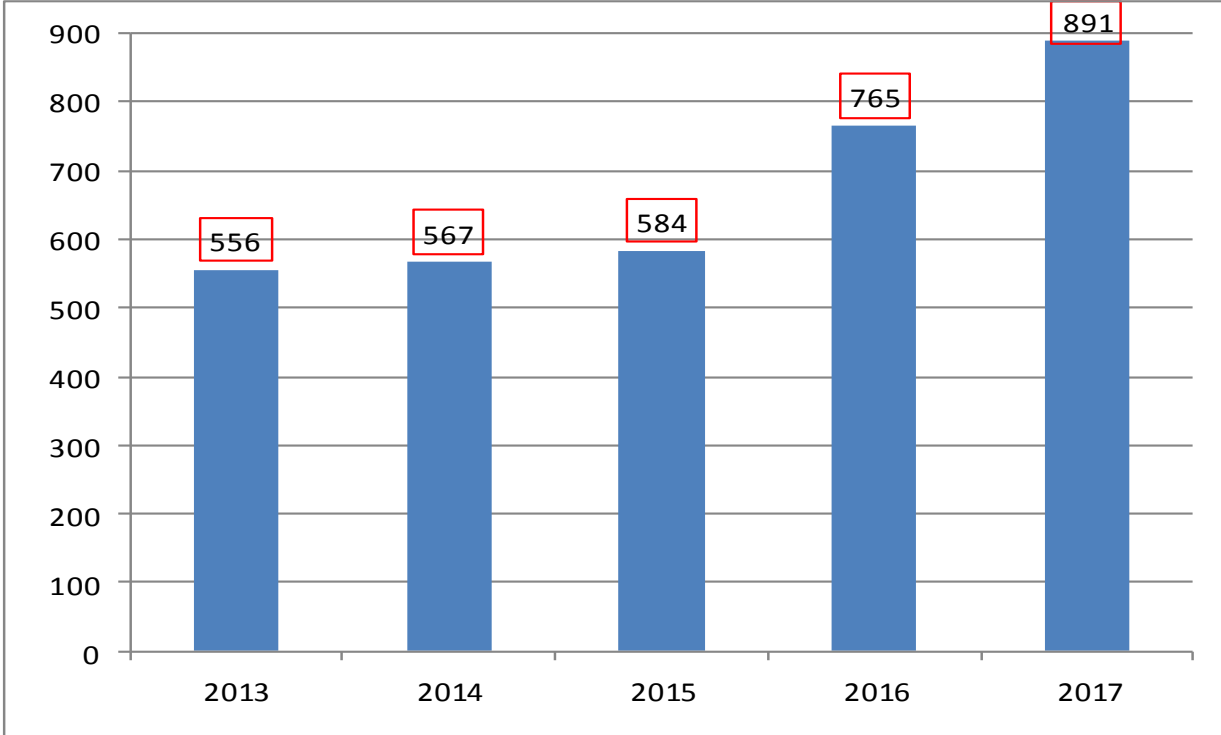
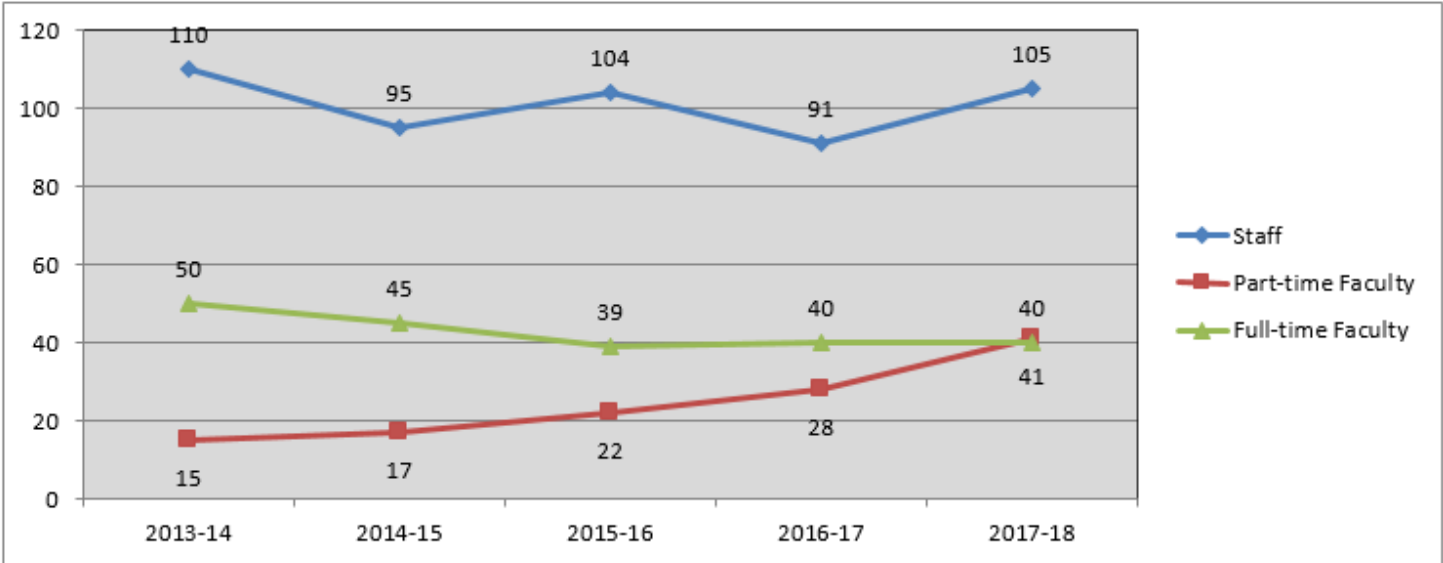


FALL ENROLLMENT

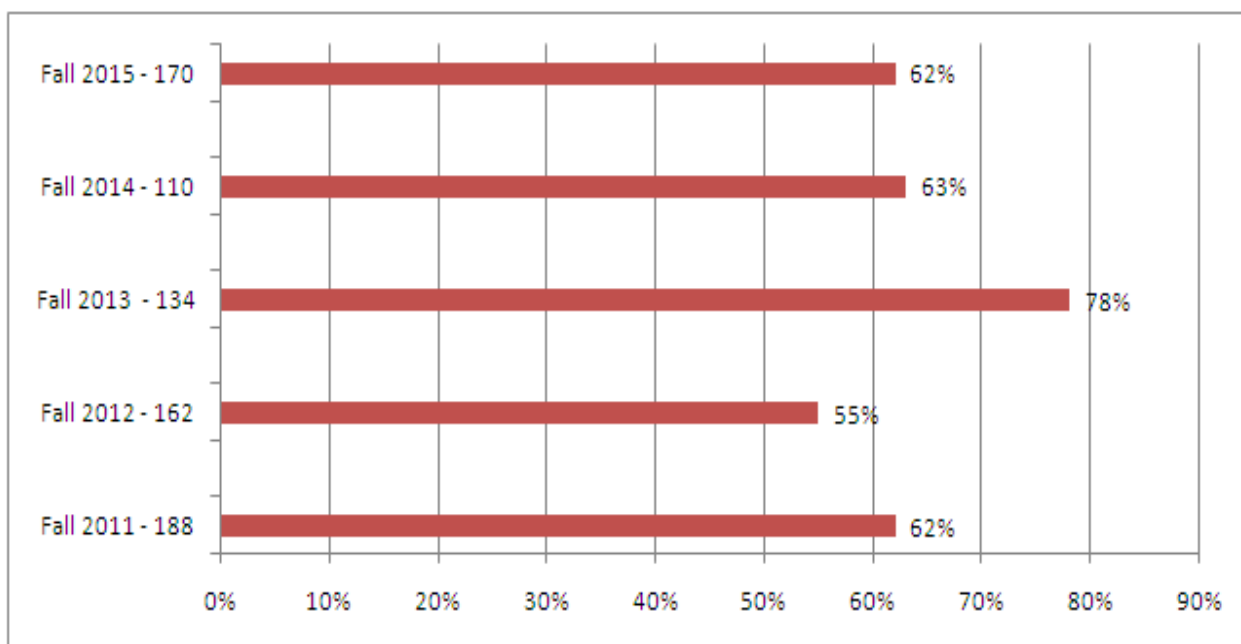


PERSONNEL



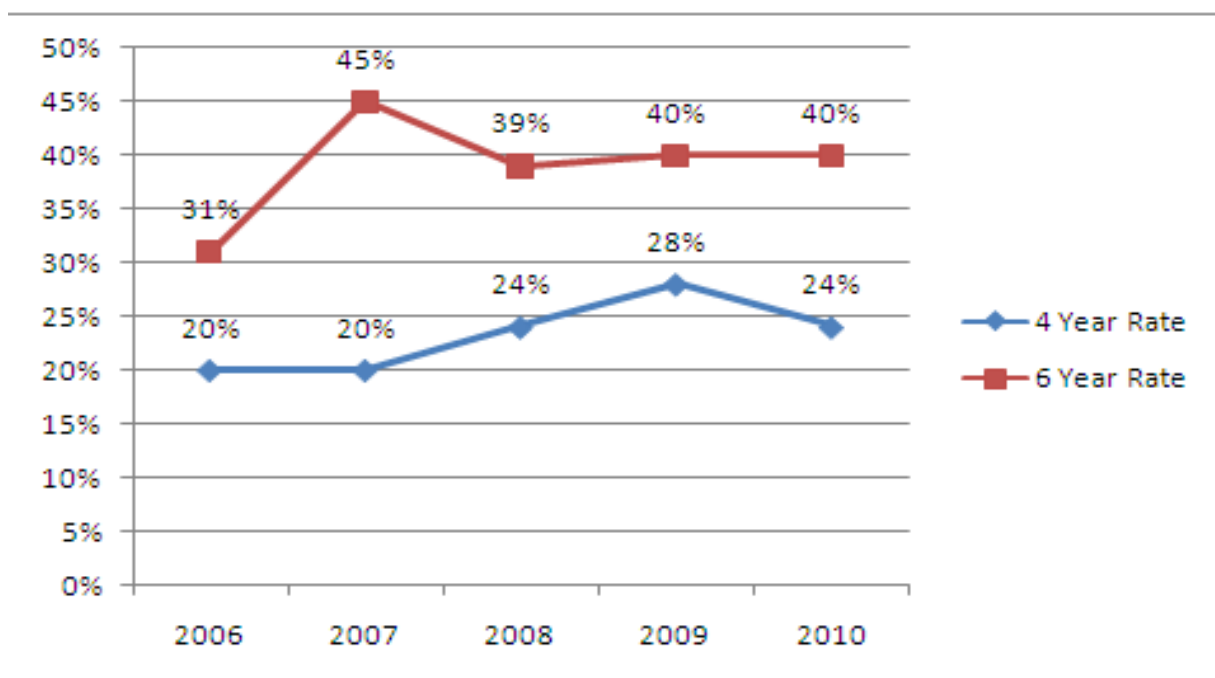
RETENTION RATES

(The percentage of first-time, full-time freshmen who returned the next fall)

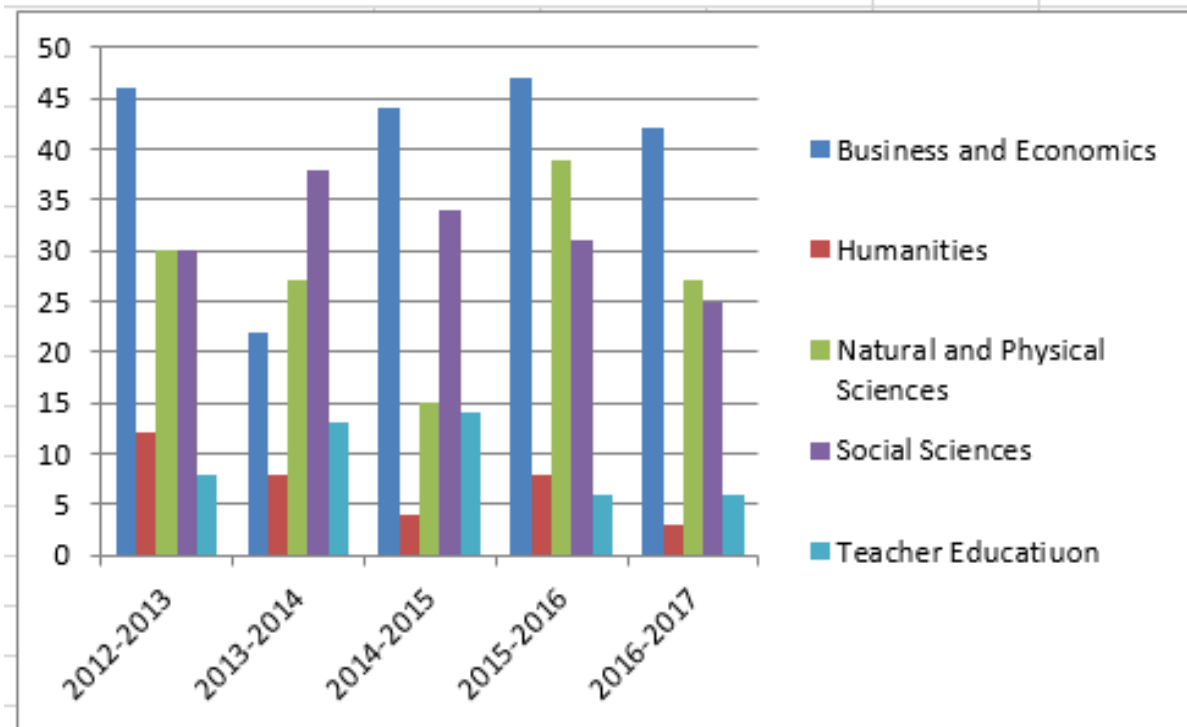


GRADUATION RATES

(The percentage of first-time full-time freshman from a fall semester who graduate within 4 and 6 years)



GRADUATES BY DIVISION



	2012-2013	2013-2014	2014-2015	2015-2016	2016-2017
Business and Economics	46	22	44	47	42
Humanities	12	8	4	8	3
Natural and Physical Sciences	30	27	15	39	27
Social Sciences	30	38	34	31	25
Teacher Education	8	13	14	6	6
TOTAL	126	108	111	131	103