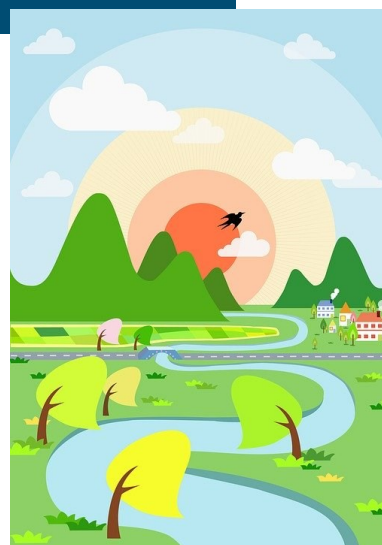


Single Splash to Shimmering Sea

CORE LEARNING

- Rivers of the UK and the world
- The journey of a river from source to mouth
- Features of a river
- Use of rivers
- Formation of coastal features
- Human impact on rivers and seas



KEY TEXTS

Water Dance by Thomas Locker
Flood by Alvaro F Villa



VISIT

Cuckmere Haven



Ask questions relating to geography

To describe direction using 8 compass points

Make comparisons between locations

Communicate in ways appropriate to the task and audience

Consider matters linked to weather, environment, environmental change, sustainability.

Identify and explain the different views of people including themselves.



Understand and use an expanding range of geographical terms

Explore features on OS maps

Draw accurate maps with more complex keys

Recognise the different shapes of continents

Demonstrate knowledge of features about local places and beyond the UK.

Identify where countries are within Europe

Investigate quality of life in different locations and environments.

Know how the locality is set within a wider geographical context

Explain about key natural resources

Explore weather patterns around parts of the world.



- Source
- Mouth
- Erosion
- Deposition
- Valley
- Contour
- Headland
- Transportation
- Tributary
- Confluence
- Delta
- Meander
- Flood plain
- Channel
- Gorge
- Rapid

CROSS CURRICULAR LEARNING

Art/DT: Painting water—pointillism and Seurat

Science: States of matter and the water cycle

Geography: UK and Europe map work.

English: Poetry linked to water, narrative writing, non-chronological report writing (sea creatures), persuasive writing relating to plastics