



Admissions

INFORMATION 2025



Admissions TO KING'S

We know that the whole procedure of choosing a school and successfully gaining a place, whilst exciting, can also be an anxious time. At King's, we do all we can to guide you through the process to make it as straightforward as possible.

General Admissions Information

King's is an academically selective school that seeks to provide a challenging and stimulating education. King's believes strongly in the philosophy of a broad and balanced education. Learning and personal development are at the heart of everything we do.

In selecting pupils, the School is looking for pupils with above average ability, as well as academic potential and wide-ranging interests and talents, who are keen to participate in school activities.

Our main entry points are in the September for the following year groups: **Pre-School (3+), Year 3 (7+), Year 7 (11+) and Year 12 (Sixth Form)**. Entry at other points is possible, where places are available. Applicants and their parents/carers are encouraged to visit the School on Open Day, or arrange a tour. Applicants for admissions undergo thorough assessment in order to ensure that we can be confident that the pupils we admit will cope with, and benefit from, the rapid learning pace and academic nature of our school.

Admission is always subject to the availability of places.

Infant Admissions

Pre-School Entry

For Pre-School entry, a child must have had their third birthday before 1 September and must be able to meet all of their own personal needs. Places are offered up to two years in advance of admission, based on the date of application.

Fees for Pre-School are for full-time provision and include lunches and snacks. The fee assumes that the school will receive a maximum of 15 hours of your free entitlement. Children may attend for fewer than five days per week, however, fees are based on a full-time place.

Pre-School Fees:

5 days per week, term time only
(Please note, Pre-School fees are exempt of VAT.)

Per term: £3,347

Per annum: £10,041
(paid termly, or by monthly direct debit.)

Notice period: One term

To apply for a place, please contact the Admissions

Department to check availability of places before completing a Registration Form via the School website with a non-returnable application & assessment fee of £75.

All pupils undergo assessment during the Spring term of the Pre-School year to assess readiness to join the Reception class in the following September.

Reception Entry

Please contact the Admissions Team to check on availability of places prior to application. To apply for a place, a Registration Form must be completed via the School website and submitted with a non-returnable application & assessment fee of £75.

Children are assessed for readiness to join the Reception classes. The assessment takes place during the Spring term prior to admission.

If you are successful in your application and a Pre-School or Reception place is offered, we will ask you to complete and return our Admission Agreement with a deposit of £600 to secure your child's place. Of this, £300 will be deducted from your first term's fees. The remaining £300 will be returned upon request on

completion of your child's school career at King's, less any outstanding charges.

Reception Fees:

Autumn term: £3,245*

Spring/Summer term: £3,397*

Year 1 and Year 2 Entry

The deadline for registrations is Friday 6 December 2024. It is advisable to contact the Admissions Department to check on availability of places prior to application.

Infant Assessments will take place on Friday 17 January 2025. Assessments may be held during the academic year for mid-year entry, subject to the availability of places.

Children are invited into school to complete age-appropriate assessments in literacy, numeracy and reasoning**. Our admissions process also includes a review of recent school reports and a school reference. To gain entry to the School, a child must perform well in the entrance assessments, showing above average ability and the capacity to cope with the pace of the King's Curriculum.

To apply for a place, a Registration Form must be completed via the School website with a non-returnable application & assessment fee of £75. If you are successful in your application and a place is offered, we will ask you to complete and return our Admission Agreement with

a deposit of £300 to secure your child's place. During the Summer term, prior to your child starting in the Infant Department at King's, families will be invited to a transition event to welcome you to our School and you will also receive a Welcome Pack containing uniform requirements, holiday dates and other useful information.

Transfer to the Junior Department in Year 3 is confirmed following an assessment during Year 2.

Junior Admissions

Junior Assessments will take place on Friday 17 January 2025 and the deadline for registrations is Friday 6 December 2024. Children are invited into school to complete age-appropriate assessments in literacy, numeracy and reasoning**. Our admissions process also includes a review of recent school reports and requesting a school reference.

To gain entry to the School, a child must perform well in the entrance assessments, showing above average ability and the capacity to cope with the pace and academic rigour of the Junior Curriculum.

Although past papers are not supplied, Assessment Guidelines are provided.

To apply for a place, a Registration Form must be completed via the School website and submitted with a

non-returnable application & assessment fee of £75. If you are successful in your application and a place is offered, we will ask you to complete and return our Admission Agreement with a deposit of £300 to secure your child's place. The deposit is returned upon request on completion of your child's school career at King's, less any outstanding charges.

During the Summer term, prior to your child starting at King's, families will be invited to a transition afternoon to welcome you to our School and you will also receive a Welcome Pack containing uniform requirements, holiday dates and other useful information.

Year 1 – 6 Fees:

Per term: £4,310*

Per annum: £12,930*

Wraparound and Holiday Care

Breakfast Club, After-School Care and Holiday Club are available for Infant and Junior pupils. Sessions must be booked in advance.

Breakfast Club from 7.45am – 8.30am: £7 per day

After-School Care from 3.30pm – 6pm: £11.50 per day

Holiday Club – £37.50 per day.

(These are not subject to VAT.)

*From 1 January 2025, fees are subject to VAT for children from Reception up to Year 13. Fees shown are exclusive of VAT.

** Children's behaviour and attitude to learning are also observed during the assessment day.

Senior Admissions

Pupils are normally admitted at the start of Year 7, in September. Applications may be considered at other times, subject to the availability of places. Applicants will be assessed via an entrance examination, a reference from their current school and by interview.

11⁺ Applications

To apply for a place for your child, you will need to register them for the 11⁺ Entrance Examination. The deadline for registrations is Friday 6 December 2024. The Entrance Examination will take place on Friday 17 January 2025.

Most pupils will be invited to attend for an interview, either in person or via Teams. This is an opportunity for us to find out more about your child and, of course, another opportunity for you to seek further information.

Invitations for candidate interviews will be sent by email shortly after the Entrance Examination and the interviews will take place during the week commencing 27 January 2025.

We will also request a reference from your child's current school. We wish to build as full a picture of your child as possible and use all of this information, with Entrance Examination scores, when considering the offer of a place. King's is a member of the Greater Manchester Consortium of Schools, which operates a common system of dates for the publication of 11⁺

offers and their acceptance (to avoid putting undue pressure on parents). King's follows the agreed Consortium timetable for 11⁺ applicants: please see our website for dates of offers and deadlines for responses. Some local schools that do not belong to the Consortium may have different offer and reply dates. If you are asked by a school for a decision before the Consortium's offer date, please contact the Admissions Team immediately for clarification about your application to King's. If you are successful in your application and a place is offered, we will ask you to complete and return our Admission Agreement with a deposit of £300 to secure your child's place. The deposit is returned upon request on completion of your child's school career at King's, less any outstanding charges.

A Welcome Pack will be sent to you containing all relevant information about joining King's. Both you and your child will be invited to a transition event during the Summer term and your child will also be requested to attend school for an Induction Morning in September 2025, prior to starting in Year 7.

11⁺ Bursaries

A number of means-tested bursaries are available to pupils applying for 11⁺ admission to the School. Please request and return a completed a KSB1 Form by the deadline of Friday 29 November 2024. The level of award is determined

by parental need and a child's performance in the Entrance Examination. Each award is assessed on an individual basis.

The award is tenable throughout the holder's time in the Senior School, subject to good conduct and progress, and is reviewed annually in the light of changes in parental circumstances. It should be noted that the number of applications for bursaries always exceeds the funds available and that applicants will need a strong performance in the entrance examination.

11⁺ Scholarships

King's offers two types of scholarships which are valued at £1,000 p.a. All Scholarship Awards are offered following assessment and come with clear expectations in terms of effort, attitude and participation, and are reviewed annually.

Academic Scholarships are awarded in recognition of an outstanding performance in the 11⁺ Entrance Examination. No application is required.

Music Scholarships are available by application and audition. Applicants should have obtained a standard of at least Associated Board Grade 3 or its equivalent.

In addition, pupils can apply to join our **King's Elite Athlete Pathway** and places are available by application and a physical assessment.

The deadline for Music and Sport applications is Friday 6 December 2024. Please see our website for more details of Scholarship Awards and application forms.

Applications for Year 8, Year 9, Year 10

Please contact the Admissions Team to check availability of places prior to application. The deadline for registrations is Friday 6 December 2024. Senior School Entrance Examinations will take place on Friday 17 January 2025. Examinations are also held throughout the academic year for mid-year entry, subject to availability of places.

To apply for a place, a Registration Form must be completed via the school website and submitted with a non-returnable application & assessment fee of £75. When your child is registered, we will send you Entrance Examination Guidelines. The Entrance Examination is set to standards expected of pupils of above average ability.

The table (*below*) shows the papers that each year group is required to sit. Following the assessment, applicants will be invited for an interview and we will also seek a school reference. If you are successful in your application and a place is offered, we will ask you to complete and return our

Admission Agreement with a deposit of £300 to secure your child's place. The deposit is returned upon request on completion of your child's school career at King's, less any outstanding charges.

During the Summer term, you will receive a Welcome Pack containing information such as dress code, holiday dates and other useful information. We will also arrange for your child to spend a transition day in school.

Sixth Form Admissions

We welcome applicants and recommend external applicants come to our Sixth Form Open Evening and the Subject Options Evening during the Autumn term of Year 11.

To apply for a place, a Registration Form must be completed via the school website and submitted with a non-returnable application & assessment fee of £75.

Candidates will be invited for an interview in January 2024, at which time we will contact schools for a written reference and predicted GCSE grades. Places are then conditionally

offered, subject to attainment of the entry grade requirements.

Entry requirements are an average of grade 6 or higher across eight GCSE subjects, with a minimum of a grade 5 in both Mathematics and English Language.

Most subjects recommend a grade 7–9 in a subject to be studied at A Level, and this is compulsory for Mathematics and Science subjects. In addition, subjects with a large mathematical content, such as Economics, require a minimum of grade 7 in Mathematics.

If you are successful in your application and a conditional place is offered, we will ask you to complete and return our Admission Agreement and Sixth Form Subject Option Form with a deposit of £300 to secure your child's place.

The deposit will be returned in full should your child not satisfy the minimum grade requirements of the offer. Should your child join King's, the deposit will be returned upon request on completion of your child's school career at King's, less any outstanding charges.

During the Summer term, you will receive a Welcome Pack containing information such as dress code, holiday dates and other useful information.

Places and subject choices are reconfirmed in August upon receipt of formal confirmation of GCSE results.

Pupils are then asked to attend school for an Induction Morning, in September 2025, prior to the start of Year 12.

Entry to:	Verbal Reasoning	Non-Verbal Reasoning	Maths	English	Science	Language
Year 7	✓	✓	✓	✓		
Year 8	✓	✓	✓	✓		
Year 9	✓		✓	✓	✓	✓
Year 10			✓	✓	✓	✓

Sixth Form Bursaries & Music Scholarships

Means-tested bursaries are available to provide financial assistance to deserving students wishing to join King's Sixth Form.

These include QBS Bursaries and the Alex Anderson Bursary. Successful applicants must be able to demonstrate they are of strong academic ability and have the potential to make a positive contribution to the academic life of the School or in other areas such as sport and/or music.

Music and Organ Scholarships are available at the discretion of the Director of Music. Further details and application forms are available from the Admissions Team.

Accessibility

King's seeks to be inclusive in its approach to prospective pupils. We are committed to providing opportunities for all pupils wherever possible. Pupils with Special Education Needs, or other needs or disabilities, are encouraged to apply and upon registering for admission, parents should provide a full, confidential disclosure of the needs of their child in respect of any Special Educational Needs, emotional needs and disabilities.

School Shop

The School Shop is located in our Sports Centre and is operated by F. R. Monkhouse. It stocks school uniform, sports

clothing and footwear, sports equipment and stationery. Please see the School website for opening hours and online ordering systems.

Fees

Seniors & Sixth Form Fees:

Per term: £5,315*

Per annum: £15,945*

Fees are payable termly in advance on, or before, the first day of each term. They can also be paid via Direct Debit over nine months. Fees are reviewed annually in the Spring term for the following academic year.

If your situation changes after accepting a place in the School and the place is no longer required, we need to be informed of this as soon as possible. There is a 14-day cancellation period within which your full deposit is refundable, but after this expires, a full term's notice must be given in writing to avoid a term's fees being charged and loss of the deposit.

*Prices quoted exclusive of VAT.

SCHOOL CONTRACT COACH ROUTES & PROVIDERS

Route B

TM Private Hire
01298 812148

Chapel-en-le-Frith – B5470 – Whaley Bridge

Route C/D

Golden Green
01298 83583

New Mills – Simmondley – Marple Bridge – Marple – Hawk Green – Silk Road

Route F

Golden Green
01298 83583

Cheadle – Cheadle Hulme – Bramhall – Poynton

Route H

Bostock's Coaches
01260 273108

Handforth – Wilmslow (Manchester Road) – Mottram – Prestbury

Route J

Golden Green
01298 83583

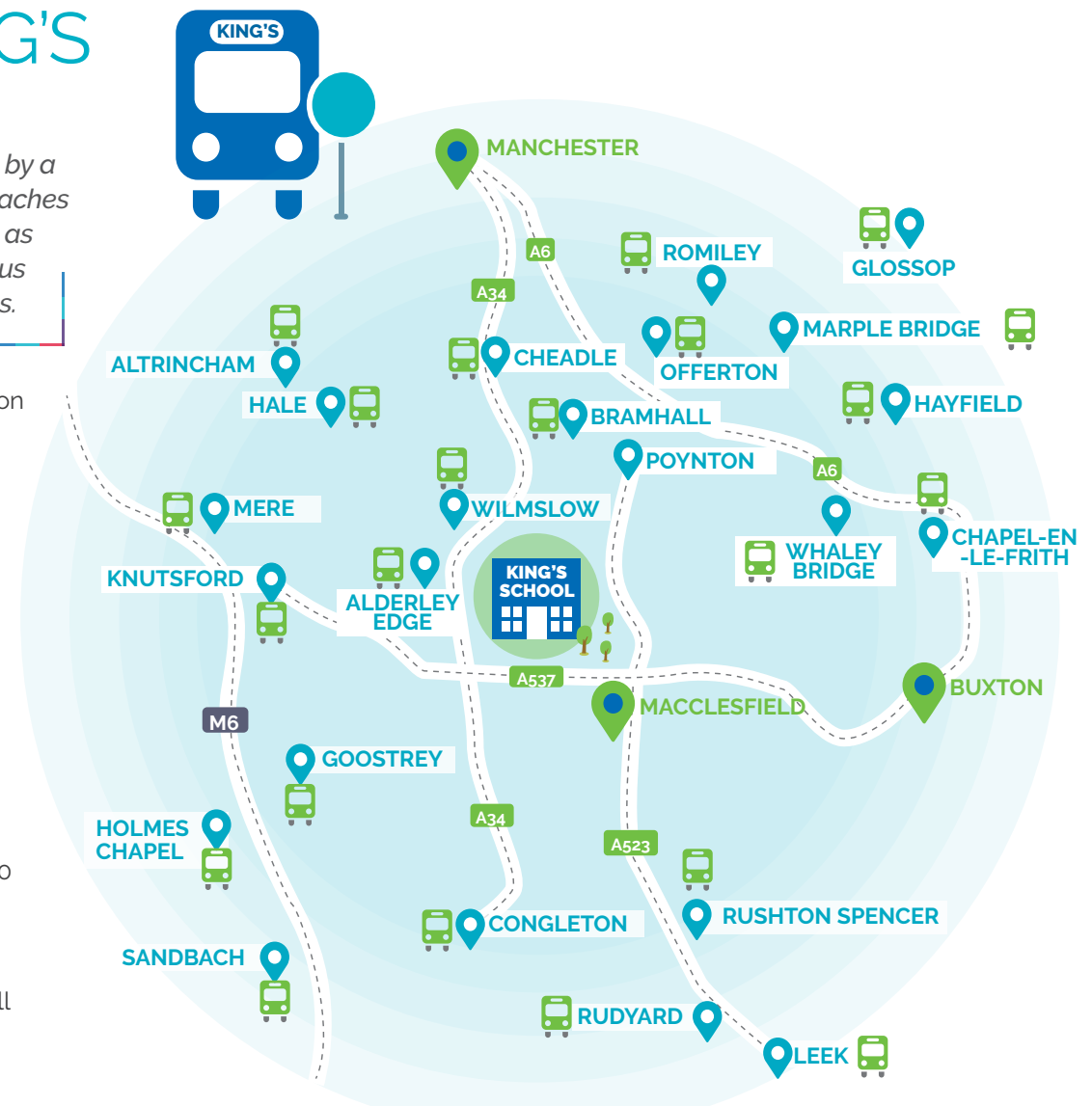
Knutsford – Mobberley – Lindow – Davenport Green – King's Arms Roundabout – Alderley Edge

Transport TO KING'S

King's is well served by a network of school coaches (see table, below), as well as by local bus and train services.

Prestbury railway station is a ten-minute walk from the school campus. We provide a minibus to and from Macclesfield railway station.

Train journey times are quick and convenient e.g. Congleton nine minutes, Poynton 10 minutes, Bramhall 13 minutes, Cheadle Hulme 16 minutes, Stockport and Stoke 20 minutes, Manchester Piccadilly 28 minutes. If you require more information, please call **01625 260010**.



Route K

Lamb's Coaches
0161 456 1515

Hale – Bowdon – Altrincham – Bucklow Hill – Mere – Knutsford – Ollerton – A537

Route L

Bostock's Coaches
01260 273108

Sandbach – Brereton – Holmes Chapel – Goostrey – Lower Withington – Chelford – A537

Route N

Golden Green
01298 83583

West Heath – Kwik Fit – Congleton – The Grove – Eaton – Gawsworth Crossroads

Route O

Golden Green
01298 83583

Leek – Rudyard – Rushton Spencer – Bosley – Lyme Green – Macclesfield

Route P

Golden Green
01298 83583

Bollington – Tytherington – Prestbury



LATE COACH SERVICE

Macclesfield (5.15pm) – Alderley Edge – Wilmslow (Kings Arms) – Mobberley – Knutsford.

Monday – Thursday only. Cost approx. £140 per term.

Please email: sarah.hearn@kingsmac.co.uk for further details.

Admissions 2025

CONTACT US

Further information on all aspects of life at King's can be found on our website: www.kingsmac.co.uk.

For enquiries regarding admissions, please contact our Admissions Team on **01625 260000**,
or email: admissions@kingsmac.co.uk.

VISITING US

Please contact our Admissions Team on **01625 260000**, or see our website: www.kingsmac.co.uk

Leading
Independent
Schools



The King's School in Macclesfield, Alderley Road, Prestbury, Cheshire SK10 4SP

tel: 01625 260000 | email: admissions@kingsmac.co.uk | web: www.kingsmac.co.uk

www.facebook.com/kingsinmacc | [@kingsmac](https://twitter.com/kingsmac)

Charity No. 1137204