

Rokeby Primary School



Newsletter



9th September 2020

It is an absolute pleasure to welcome back all families to Rokeby after what seems like a very long time. I'm really pleased that last week went so well and I would like to thank all children, parents and families for their support in a smooth re-opening. Please speak to your class teacher if you have any worries or concerns that need addressing. As I am sure you can imagine, there will be lots of different ways of doing things for the time being, one of which is your weekly message in the communication book. This will now be posted on class dojo instead. If you haven't set your account up yet, please speak to your class teacher about this.

I am very much looking forward to the Autumn term.



Mrs James

Welcome to our new staff joining us at Rokeby



Miss Alice Longbottom—Teaching Assistant

Miss Emily Longbottom—Teaching Assistant



Mrs Izabella Poplawska —Teaching Assistant

Miss Temple —Teaching Assistant



Miss Doughty—Class Teacher

We would like to say a big welcome to all our new staff members joining us at the start of term. We are looking forward to expanding team Rokeby!

Goodbye



Mr Evans—Teaching Assistant

We are saying a sad goodbye to Mr Evans as he leaves the school to pursue a career in marketing. We are thankful for all the work Mr Evans has done for us and although we will be sad to see him go, we wish him well in his new adventure.

Thank you Mr Evans, we will miss you!

Please remember that we are here for all of our families. Please do not feel alone. If we can support you in any way then please contact us on Class Dojo or you can email:

RokebyFamilySupport@stowevalley.com



IMPORTANT INFORMATION



COVID-19

Be COVID-19 Safe

To help keep your child and fellow student's safe, your child should not come to school if:

- They are feeling unwell or are experiencing any coronavirus symptoms (If in doubt, book a test. If positive, isolate for 10 days from start of symptoms)
- They have tested positive for coronavirus and are within the 10 day isolation period
- They are sharing a household or support bubble with someone with symptoms (person with symptoms to be tested, if negative can return to usual activities; if positive, you must isolate for 14 days from last contact)
- They have been advised by the NHS test and trace service to self-isolate or aware they are a close contact of someone who has tested positive for coronavirus (isolate for 14 days from last contact)

COVID-19 Out of hours Contact line:



In order for us to help keep everyone safe at school, an out of hours contact line has been set up for parents to report any positive cases of COVID-19 that directly relates to the school. If your child/ren or anyone in the family home has been tested positive you must inform the school using the number below.

How to report a case of COVID-19: You will need to send a text message to the number below with details of who has been tested positive. This includes information such as when you/they were tested and who will be affected (siblings, family members or friends who may also attend the school).

When to report a case: It is really important you let us know as soon as you find out that the test result is positive. You can text the number at any time, day or night. This is so we can do our best to ensure the safety of everyone who remains at the school.

Awaiting test results: We understand that at some point you may be awaiting results of a test. In this case the child who is tested will need to remain at home until the test results are back.

0 7 3 8 8 0 5 5 3 9 6

TEXT ANY DETAILS, AS SOON AS YOU FIND OUT, ANYTIME.



PART OF STOWE VALLEY MULTI ACADEMY TRUST

PE kit

To minimise movement around school, on your child's PE day, we ask that they attend school in their PE kit. They may also wear their school jumper with their PE kit if they wish.

Your child will be doing PE on the following day:

Nursery: Wednesday

Reception: Wednesday

Year One: Wednesday

Year Two: Friday

Year Three: Thursday

Year Four: Friday

Year Five: Thursday

Year Six: Friday



Drop Off and Pick Up

To ensure that we help stop the spread of COVID-19 we are asking parents to observe social distancing measures at all times when on site. When dropping off or picking up from the school please maintain a 2 metre gap from others. Children are to be dropped off and picked up at their classroom door to limit the amount of people coming through the reception. Please note we are doing everything possible to make this school a safe environment and appreciate your help.



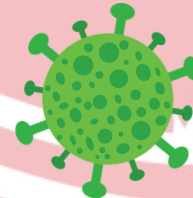
Bugs and Illnesses

Despite COVID-19 we understand that there are various illnesses and bugs around this time of year. To help prevent passing germs we will continue to encourage good hand washing and advise the children to wrap up warm. Please ensure your child has a warm coat, hat and gloves to assist them if needed.

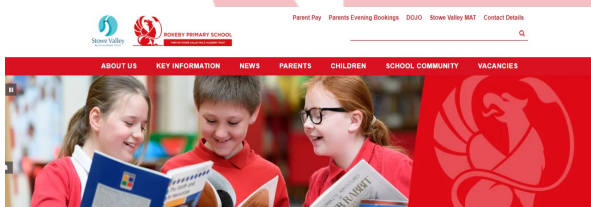
<https://www.nhs.uk/live-well/healthy-body/best-way-to-wash-your-hands/>

<https://www.nhs.uk/conditions/norovirus/>

<https://www.nhs.uk/conditions/common-cold/>



REMEMBER: IF YOUR CHILD IS NOT ATTENDING SCHOOL YOU MUST CONTACT THE FRONT OFFICE, FIRST THING IN THE MORNING TO INFORM US OF THEIR ABSENCE.



We have a website where you can get all the latest letters and updates from each class on what they have been learning about recently.

WWW.ROKEBYPRIMARYSCHOOL.CO.UK

Rokeby Primary is part of the Stowe Valley Multi Academy Trust.
Tel: 01788 814399 Email: rokebyprimary@stowevalley.com



Rokeby Primary School is committed to safeguarding and promoting the welfare of children and young people and expects everyone to share this commitment.

