



BACK²SCHOOL

AT BARTON CREEK ELEMENTARY

Tiffany Phelps, Principal

Laura Coaxum, Assistant Principal

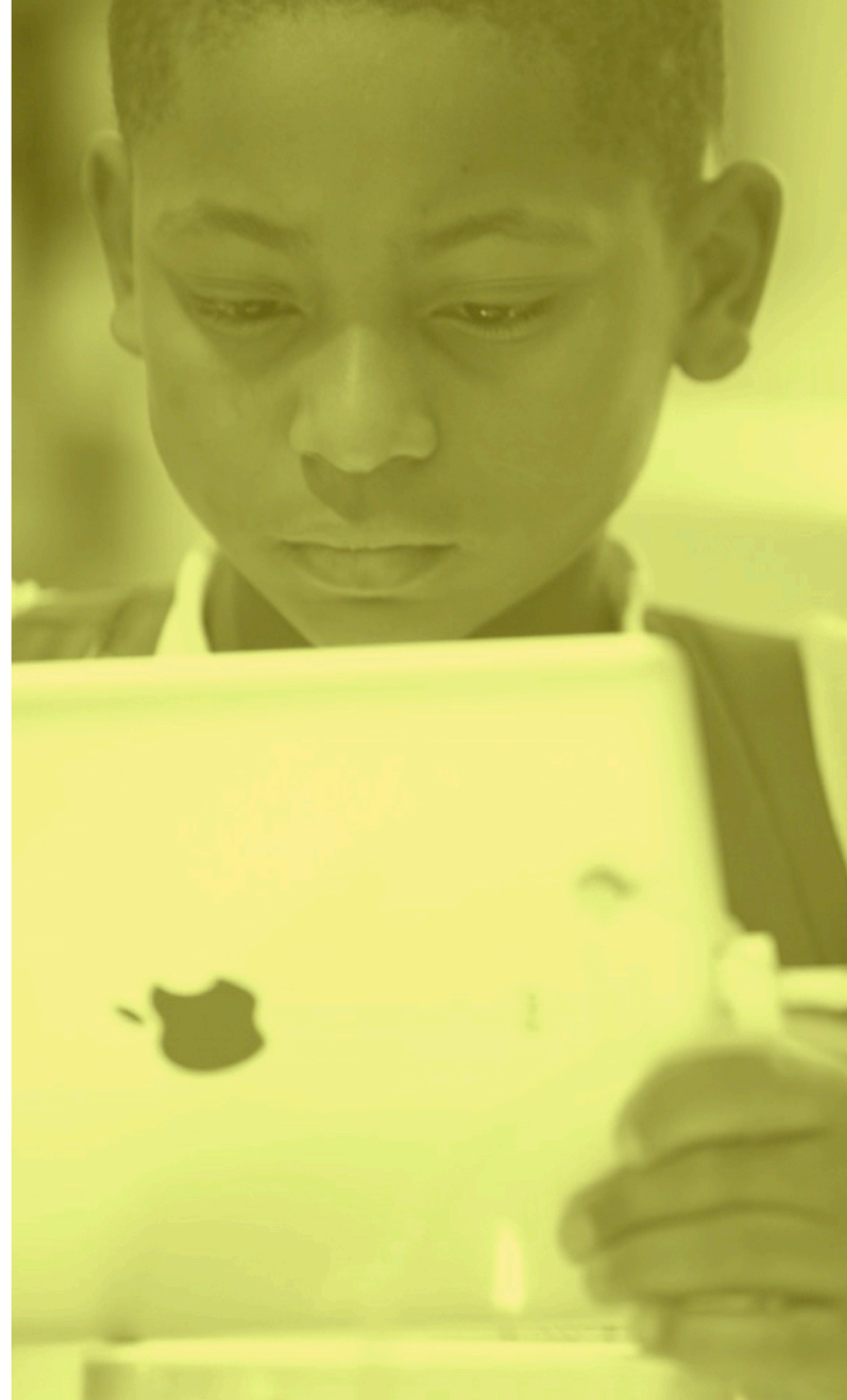




Meet the Panelists

- Susan Fambrough, Chief Academic Officer
- Jeremy Trimble, Chief Operations Officer
- Christie Isom, Educational Partner
- Jennifer Cheatham, Counselor
- Marilyn Sansom, R.N., School Nurse
- Michelle Hogan, School Secretary
- Leslie Abbott, BCE Kindergarten Teacher and 2019-2020 BCE Educator of the Year

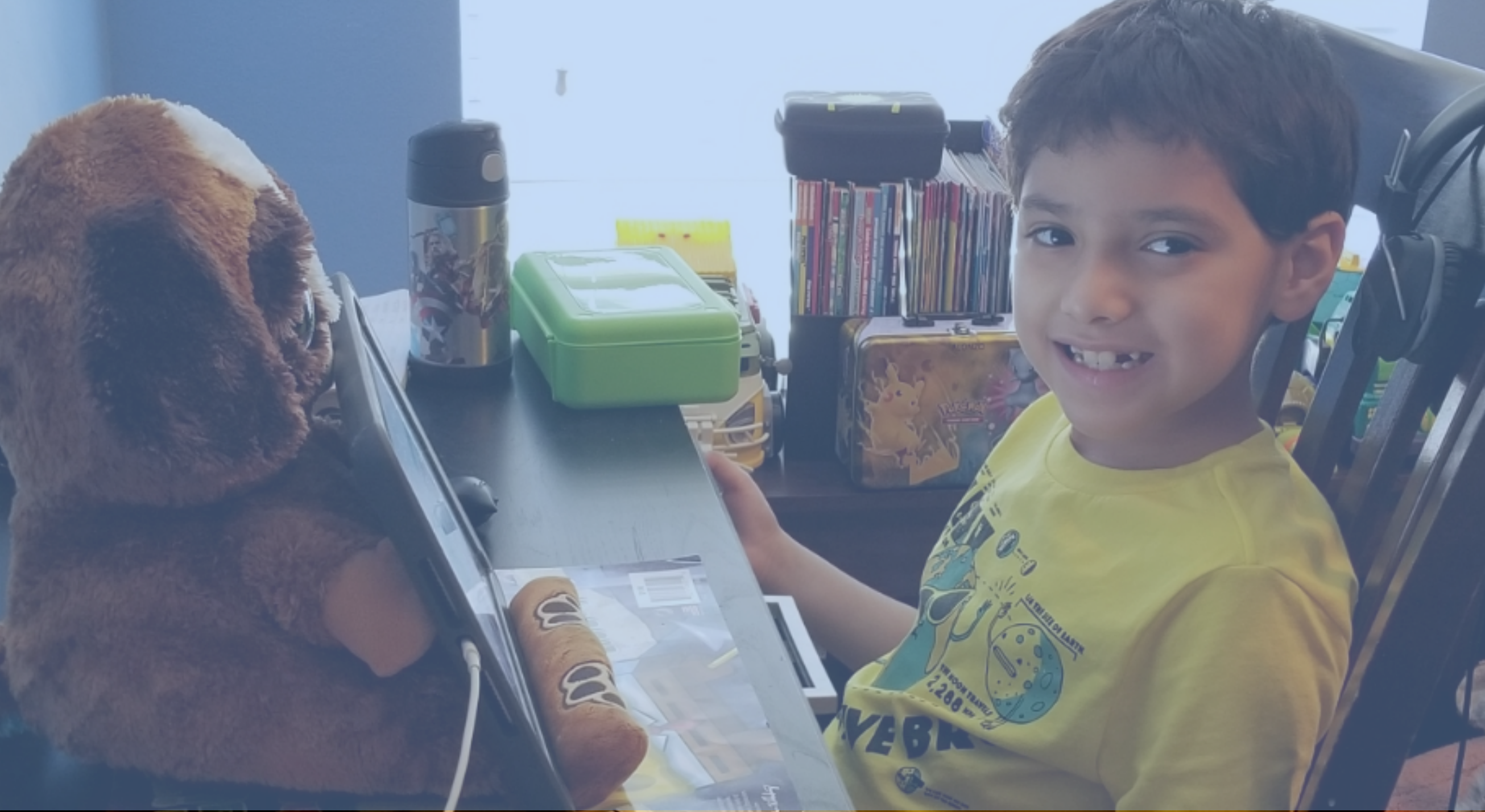




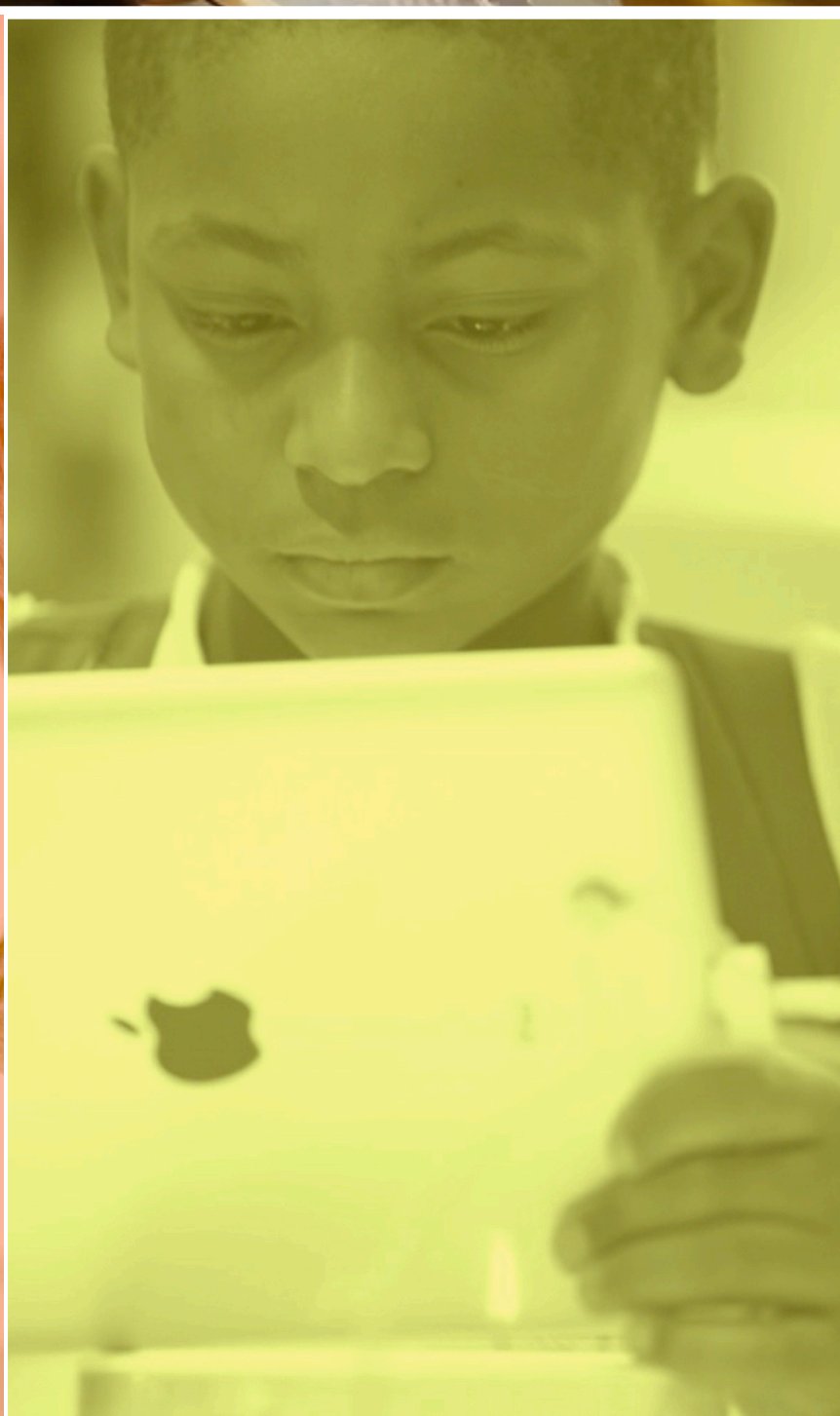
Today's Agenda

- Schedules and Changes Throughout the Phases
- Arrival/Dismissal
- Delivering Items to Campus
- School Environment
- Brain Breaks
- Hand Sanitizing and Bathrooms
- COVID-19 Procedures
- Community Involvement
- Smart Tag
- Full Day Learning Information
- Q&A





TOGETHER WE CAN.



Hy-Blend Schedule

- For students who are included in the 25% and returning to campus, the in-building school day begins at 7:45 and ends at 11:00.
- In-building students will engage with synchronous specials and asynchronous learning in the afternoon between 1:00-4:00.
- Students who remain in remote learning will engage with synchronous specials and asynchronous learning in the morning from 7:45-11:00, and then synchronous learning in the afternoon from 12:45-4:00.





Hy-Blend Schedule

K (In-Building)	Class Mtg 7:45-8:00	Language Arts/Social Studies 8:00-9:30AM		Math/Science 9:30-11:00AM		Students Transition Home/Lunch 11:00AM-1:00PM		Specs 1:00-1:20PM	Asynchronous Learning							
K (Remote)		Specs 8:00-8:20AM	Asynchronous Learning			Teacher Planning/Lunch 11:00AM-12:45PM		Class Mtg 12:45-1:00PM	Language Arts/Social Studies 1:00-2:30PM		Math/Science 2:30-4:00PM					
			Small Group						Small Group							
1 (In-Building)	Class Mtg 7:45-8:00	Language Arts/Social Studies 8:00-9:30AM		Math/Science 9:30-11:00AM		Student Transition Home/Lunch 11:00AM-1:00PM		Intervention/ Enrichment 1:00-1:20PM		Specs 1:30-1:50	Asynchronous Learning					
1 (Remote)		Intervention/ Enrichment 8:00-8:20		Specs 8:30-8:50AM	Asynchronous Learning		Teacher Planning/Lunch 11:00AM-12:45PM		Class Mtg 12:45-1:00PM	Language Arts/Social Studies 1:00-2:30PM		Math/Science 2:30-4:00PM				
			Small Group						Small Group							
2 (In-Building)	Class Mtg 7:45-8:00	Language Arts/Social Studies 8:00-9:30AM		Math/Science 9:30-11:00AM		Student Transition Home/Lunch 11:00AM-1:00PM		Asynchronous Learning			Specs 2:00-2:30PM	Intervention/ Enrichment 2:30-2:45PM	Asynchronous Learning			
2 (Remote)	Asynchronous Learning			Intervention/ Enrichment 8:25-8:45AM		Specs 9:00-9:20AM	Asynchronous Learning		Teacher Planning/Lunch 11:00AM-12:45PM		Class Mtg 12:45-1:00PM	Language Arts/Social Studies 1:00-2:30PM		Math/Science 2:30-4:00PM		
			Small Group						Small Group							
3 (In-Building)	Class Mtg 7:45-8:00	Math/Science 8:00-9:30AM		Language Arts/Social Studies 9:30-11:00AM		Students Transition Home/Lunch 11:00AM-1:00PM		Asynchronous Learning			Intervention/ Enrichment 1:40-2:30PM		Specs 2:30-2:50PM	Asynchronous Learning		
3 (Remote)	Asynchronous Learning			Intervention/ Enrichment 8:55-9:25AM		Specs 9:30-9:50AM	Asynchronous Learning		Teacher Planning/Lunch 11:00AM-12:45PM		Class Mtg 12:45-1:00PM	Math/Science 1:00-2:30PM		Language Arts/Social Studies 2:30-4:00PM		
			Small Group						Small Group							
4 (In-Building)	Class Mtg 7:45-8:00	Math/Science 8:00-9:30AM		Language Arts/Social Studies 9:30-11:00AM		Students Transition Home/Lunch 11:00AM-1:00PM		Asynchronous Learning			Asynchronous Learning			Specs 3:00-3:20PM		Intervention/ Enrichment 3:30-4:00PM
4 (Remote)	Asynchronous Learning					Specs 10:00-10:20AM		Intervention/ Enrichment 10:30-11:00AM	Teacher Planning/Lunch 11:00AM-12:45PM		Class Mtg 12:45-1:00PM	Math/Science 1:00-2:30PM		Language Arts/Social Studies 2:30-4:00PM		
			Small Group						Small Group							
5 (In-Building)	MM 7:45-8:00	Math/Science 8:00-9:30AM		Language Arts/Social Studies 9:30-11:00AM		Student Transition/Lunch 11:00AM-1:00PM		Asynchronous Learning			Asynchronous Learning			Intervention/ Enrichment 2:50-3:20PM		Specs 3:30-3:50PM
5 (Remote)	Asynchronous Learning				Intervention/ Enrichment 9:30-10:00AM		Specs 10:30-10:50AM		Teacher Planning/Lunch 11:00AM-12:45PM		Class Mtg 12:45-1:00PM	Math/Science 1:00-2:30PM		Language Arts/Social Studies 2:30-4:00PM		
			Small Group						Small Group							

Full Day Schedule

- When we return to a full day schedule, we will resume our regular bell schedule. The day will begin at 7:40 and end at 2:50. This will be true for both remote and in building learners.
- We are in the hy-blend schedule through October 9th unless the board takes action to change that.
- The full day schedule will look similar to a normal school day schedule and will be shared prior to being put in place.



Changes Throughout the Phases

- During full remote learning, class sizes have been balanced.
- During the hy-blend schedule, teachers are serving both in building and remote students classes can remain consistent.
- When we move to a full day schedule, students will be grouped by their learning placement selection (i.e., remote or in building). This may result in uneven class sizes and teacher changes.
- Per TEA guidelines, parents may change their selection for the student every 9 weeks. These changes may result in a change in class placement or class sizes.
- As students need to quarantine, they will move into a remote class which may result in an increased class size for a period of time.



Changes Throughout the Phases

- Based on the survey that was done in August, we have approximately 46% of our families that have opted to return in person.
- During the first phase, we will have 122 students in the building.
- Once we move into a full day schedule that allows for any student to attend that has selected in building, social distancing will become more challenging due to classroom space.
- CSS and GT will be using the blended learning model once we begin a full day schedule.
- Some teachers will be serving both remote and in-person learners during the full day schedule.



Arrival and Dismissal Map

Arrival & Dismissal Procedures



Arrival Procedures

- Campus doors will open at 7:20.
- Students will enter the building from their drop off point and go directly to their classroom to be received by their teacher.
- Bus Riders will be dropped off in the front of the building and enter through the main door.
- Car Riders will be dropped off in the back of the building and enter through the door by the art room.
 - Students will need to wear their mask when they exit the car
 - Please turn off child locks so students can exit their car on their own. Staff will be available to help open doors as needed.
- Parents will not be able to enter the building.





Late Arrival Procedures

- If a student arrives after 7:45, they will need to enter the building through the main doors.
- Students will wait on the designated markers until a staff member admits them to the building.
- A front office staff member will open the front doors, sign the student in, and ensure the student makes it to class.
- Parents and visitors will not be allowed into the building to walk their child to class.

Dismissal Procedures

- Bus, Car Line, or an approved after school child care provider will be the only dismissal options. We can no longer accommodate parent walk up as an option.
- If you are picking your child up through the car line, please have your child(ren)'s name and grade level(s) displayed in your front windshield. Please put your mask on if you need to communicate with a staff member.
- Kinder-second grade car riders will be spread out in the cafeteria until their car arrives.
- Third-fifth grade car riders will remain in their classroom until their car arrives.
- Staff will assist with loading students onto buses and opening car doors as needed.



Signing a Student out Early

- In the event you need to sign your student out early, you will park and proceed to the main entrance. Ring the buzzer and show your ID at the front door and remain outside.
- Office staff will communicate with you and confirm you are authorized to sign the student out.
- Office staff will call the student to the office, walk them out to you, and sign the student out.
- If your child is in the nurses office, when you show your ID please let office staff know. The nurse will walk our student out once the above steps are completed.



Delivering Items to Campus

- Please send children with everything they need in the morning. This is the safest and simplest option.
- Should you need to deliver an item to a student (i.e., forgotten glasses) please clearly label the item with the student's name, grade level, and homeroom teacher.
- Ring the front office bell and notify staff that you are delivering an item.
- A cart will be inside the main office door to leave the item. Place the item in the appropriately labeled basket and exit the building.
- Office staff will deliver items to students periodically.



School Environment

- Classrooms will be disinfected daily.
- High touch surfaces will be cleaned daily and as needed throughout the day.
- Students will be socially distanced when possible in the classroom.
- Students will sit in desks spread across the classroom facing one direction. In classrooms that have tables, clear dividers will be utilized between students.
- Students will keep their backpacks, water bottles, snacks etc. at their desk/chair.
- Student iPads will go back and forth daily.



School Environment

- Students may work in small groups or partners if/when they are able to remain socially distanced.
- Teacher tables will be cleaned in between each small group.
- Students may utilize classroom books. They will be asked to use hand sanitizer before handling the books and will keep their book selection for a period of time. The campus library will not be accessible during the hy-blend schedule.
- Students will keep their masks on when working at their desks. They may take them off to eat or drink but must keep them on otherwise.





School Environment

- Students should bring a refillable water bottle as water fountain spigots will not be accessible.
- Lunch will not be eaten on campus during the hy-blend schedule. Sack lunches will be available to purchase online and will be sent home with the student if they choose to do so.
- Students will be able to eat a healthy snack in the classroom at a time designated by the teacher. All snacks must be nut free.



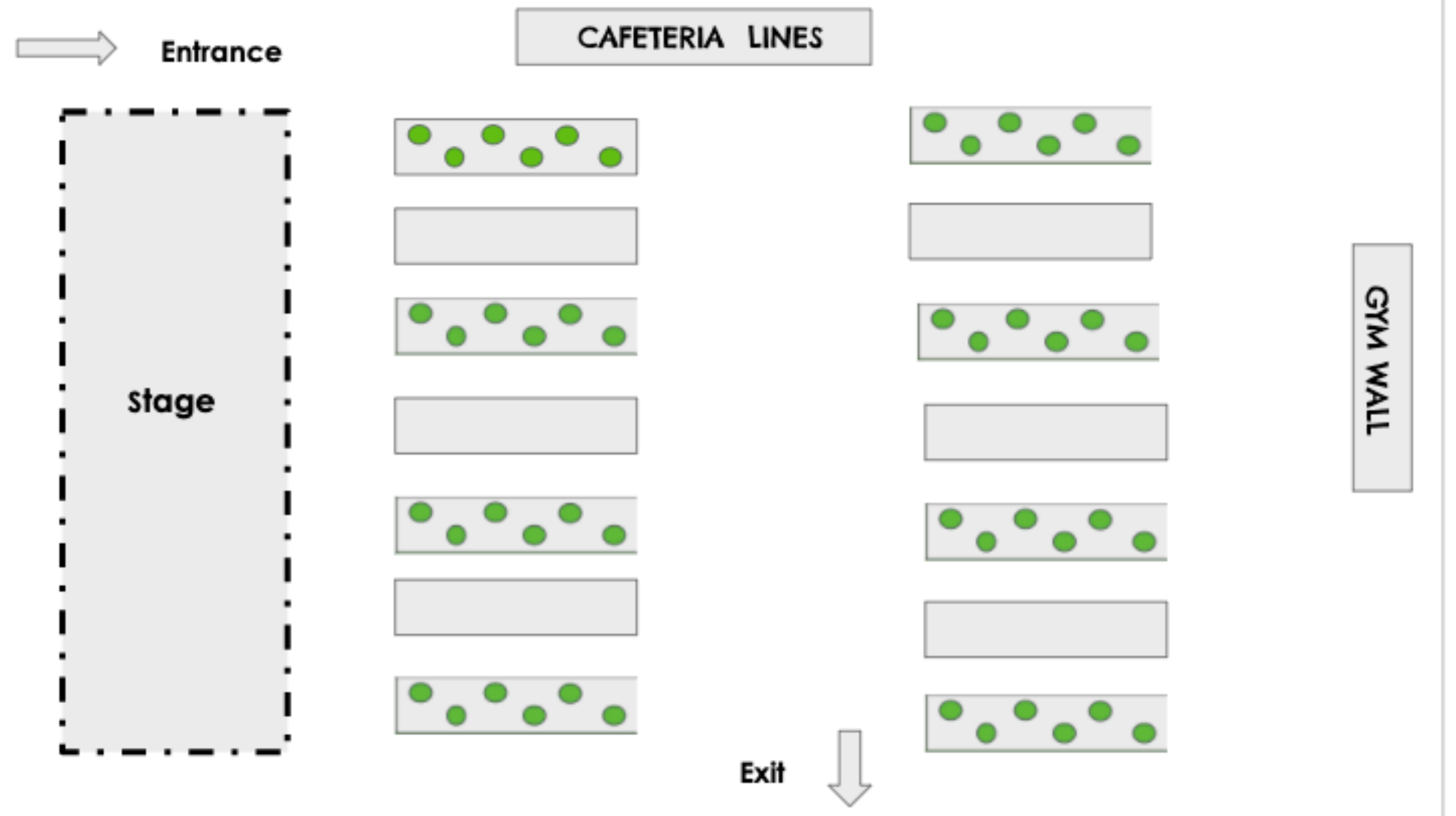
Lunch

- Tables will be sanitized between classes.
- Cafeteria tables will be marked with green dots to show students were to sit. There will be approximately 6 students per table.
- To allow for social distancing, all student lunches must be nut free.
- To reduce the spread of the disease, parents will not be able to have lunch with their child at this time.
- Students will have assigned seats in the cafeteria.
- Students may only go through the line once. Items such as silverware will be passed out by staff.
- Disposable cups will no longer be available. Students should bring their own refillable water bottle.
- There will be no microwaves in the cafeteria.





Lunch



Specials

- When we resume a full day schedule, students will be able to go to specials classes.
- Students will use hand sanitizer before entering and when exiting each specials space.
- Students will have an assigned seat in music and art and an assigned space in PE.
- Equipment will be sanitized per guidelines between classes and at the end of each day.
- Students will be required to wear a face mask during specials, including during PE.





Brain Breaks

- During the hy-blend schedule, there will not be recess during the in-building school day.
- Teachers will structure brain breaks as needed throughout the morning to give students opportunities to move.
- Teachers will utilize resources such as Go Noodle to take structured breaks within the classroom.
- Teachers may also take students outside to go on a class walk or to utilize an outdoor learning space.





Recess

- Recess will not occur during the hy-blend schedule but will during a full day schedule.
- Students will socially distance during recess.
- Students will remain with their homeroom class during recess to mitigate the spread of disease.
- Classes will be assigned designated areas to play and they will rotate through those areas throughout the week.
- Students can take masks off during recess if they are socially distanced. We have purchased breakaway mask lanyards for our students.





Recess

- The playscape will be disinfected daily
- The gaga pit will be closed for the time being.
- Students will not be able to bring equipment from home for recess but will have access to sanitized equipment.
- Students can play organized games that do not include contact and allow for students to remain six feet apart.
- Students will use hand sanitizer before and after recess.



Hand Sanitizing

- Hand sanitizer will be available at all entrances to the campus, in classrooms, and in common areas throughout the campus.
- Students and staff will utilize hand sanitizer upon entry and exit of the classrooms.
- Students will wash their hands before and after eating and following restroom breaks.
- Parents may provide a small individual hand sanitizer that is 60% or above alcohol for the individual use of their child if desired.
- Signage and instruction will be provided on an ongoing basis to ensure student can independently utilize proper hand washing techniques.





Restrooms

- Students will enter the restrooms one at a time.
- They will utilize a system to determine if a restroom is occupied or available.
- Students will wash hands prior to exiting the restroom and sanitize upon re-entering their classroom.
- Classes will not take whole class restroom breaks. Instead, students will be allowed to go as needed.



COVID-19 Procedures

- EISD COVID-19 procedures are based on public health protocols from the Centers for Disease Control (CDC) and Austin/Travis County Public Health (APH) while complying with the recommendations and requirements of the Texas Education Agency (TEA).
- Please refer to the Medical Protocol on the Eanes R2R website and the community webinar for contact tracing and quarantining information. Any student who is required to quarantine will be able to participate in remote learning.
- All students and staff must wear a mask when on campus. Bandanas, neck gaiters, and masks with valves are not allowed. Students may remove their masks to eat or drink. Face shields may be worn in addition to a mask, but not in place of a mask.
- We recommend adding the clinic phone number 512-732-9185 to your contacts in case of emergencies.



Community Involvement

- Pre-recorded grade level orientations were shared prior to the start of school.
- Parent teacher conferences will be held virtually in October on conference days.
- All meetings (i.e., ARDs 504, parent teacher conferences) will be held virtually.
- There will be no in person assemblies at this time.
- Field trips have been put on hold for the time being. Live oak has been put on hold as well and options for the spring are being explored.
- Parent volunteers will not be able to access the building but will be utilized remotely as appropriate.



Smart Tag

- If your child is absent from school, you must enter all absences in Smart Tag and provide a reason.
- If your child is ill, please provide as much detail as possible about the illness/symptoms. Nurses will be contacting parents as needed to follow up.
- You can confidentially report an exposure to COVID-19 through smart tag.
- The dismissal default will be bus rider. If your child will not be a bus rider, you must login to smart tag between 8:00 am September 4th and 8:00 am September 8th to update the correct default. After 8:00 on the 8th you will no longer be able to update your default and will need to email in order to change it.
- Dismissal will continue to be managed through smart tag. Please make any changes in a student's dismissal by **10:15** during the hy-blend schedule.
- Kindergarten students and new students will receive their smart tag on the first day of school. Smart tags will be zip tied to backpacks.

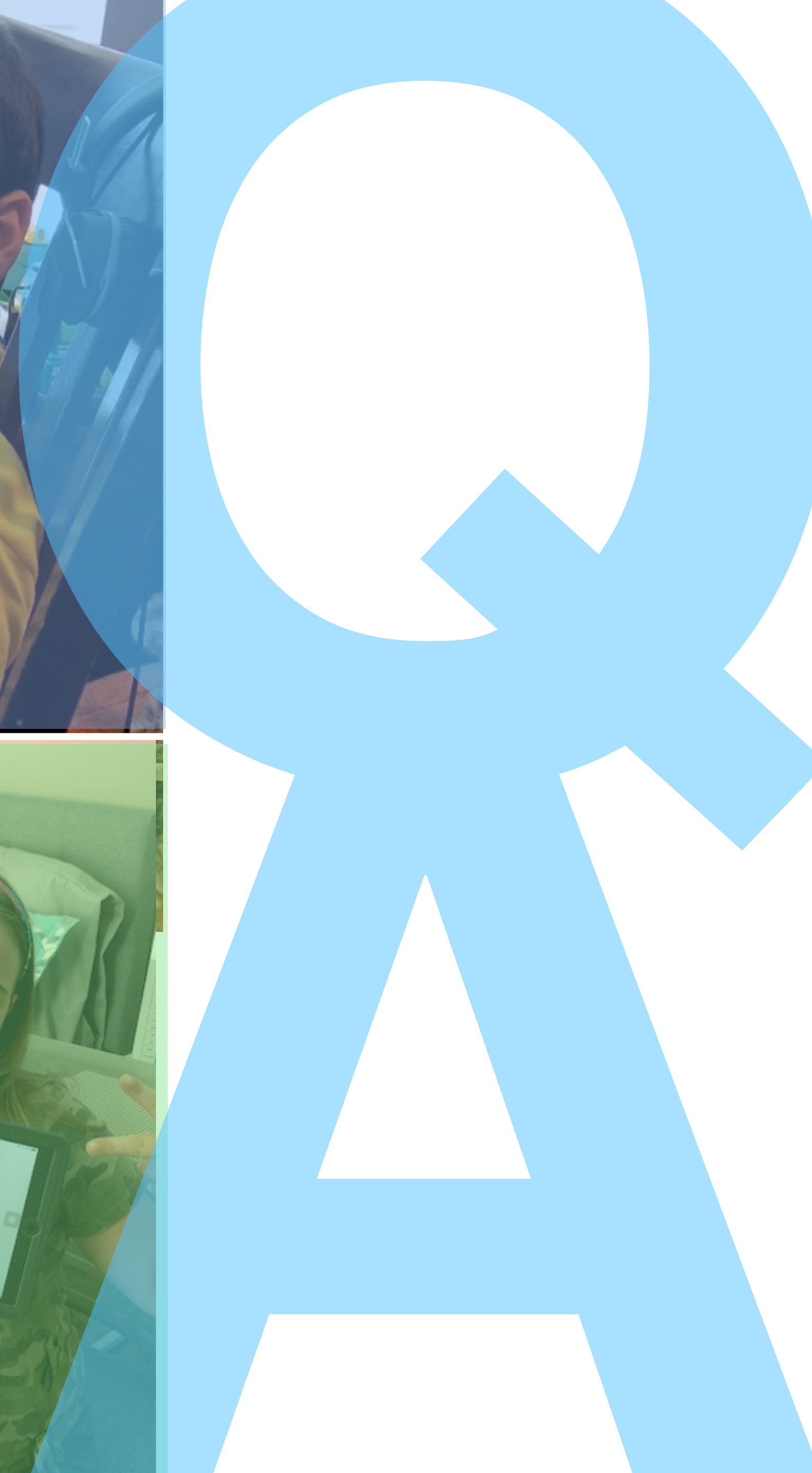
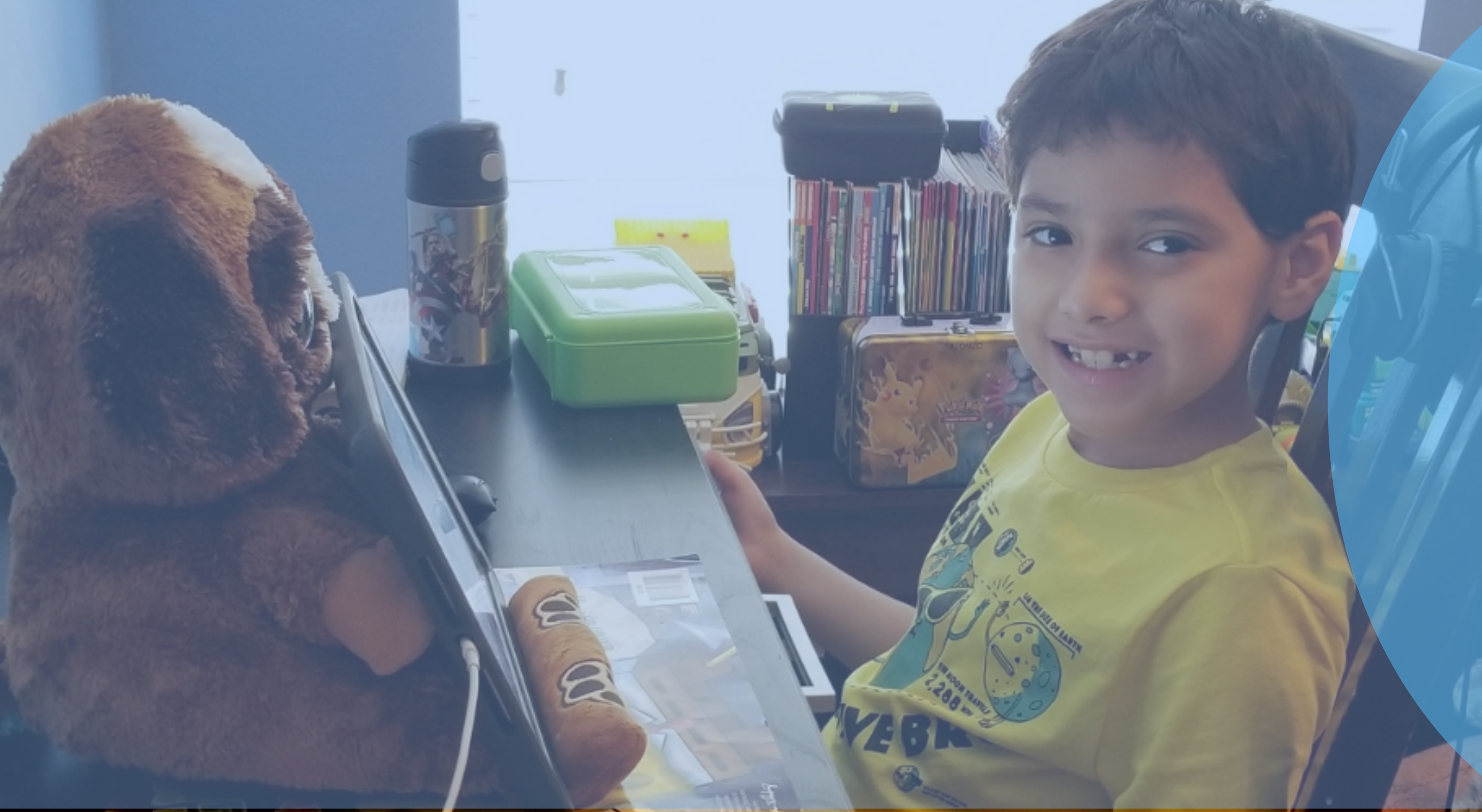




Sustaining In-Person Learning

We Need You To Help Us By...

- Staying safe
- Monitoring your health
- Reporting cases ASAP
- Understanding
- Supporting each other





THANK YOU

FROM BARTON CREEK ELEMENTARY

