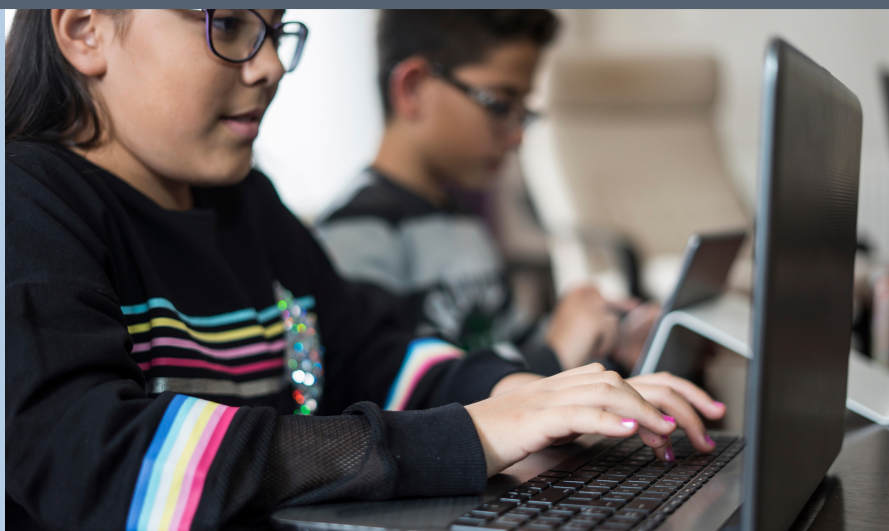




2020-2021 Start Strong, Stay Strong

Key elements of Secondary School Remote Learning

- Synchronous Learning: (Students learning together through online classes and video conferencing).
- Small group instruction for students in need of extra support.
- Teacher office hours through phone calls and emails.
- Teacher-facilitated learning through assignments.
- Culturally responsive support for social emotional learning and mental health.
- Grading on a standard A-F scale.
- Attendance requirements based on teacher contact with students.
- Specially designed instruction based on IEP goals for Special Education students.



What will a typical day look like for my secondary school-age child?

Instructional days by school:

Roseburg High School - 7:40 a.m. - 2:40 p.m.

Jo Lane Middle School - 7:50 a.m. - 2:50 p.m.

Fremont Middle School - 8 a.m. - 2:50 p.m.

Rose School - 8 a.m. - 2:30 p.m.

Schedules will include the following opportunities:

- Four classes per semester.
- Classes online through the Canvas learning management system.
- Daily interaction with teachers via short Zoom sessions.
- Teacher office hours.

Remote learning resources for parents and information about the Canvas learning management system can be found on our website at <https://bit.ly/328bHux>.