



Elementary Counseling Program

The Wiseburn Elementary School Counseling Department consists of a team of dedicated professionals committed to developing a school culture and climate that is respectful, positive, accepting, and safe for students of all backgrounds. We call ourselves the **CARE Team** because our number one goal is to provide **Counseling and Access to Resources in Education (CARE)**.

Counselors use a multi-tiered system of support (MTSS) to assess, develop, and implement supports and interventions.

This means that we work with school psychologists, teachers/staff, students, families, and community members to support every single WUSD Elementary student. When students are having a certain challenge, we help support that student with interventions that will benefit their unique needs. the MTSS Triangle, below provides a visual of counseling program services.



[Click here for counseling resources](#)



[Click Here for a brief video introduction](#)

TIER 3: TARGETED/INTENSIVE

Individual interventions

Examples: Individual therapy, family therapy, FBA-based behavior intervention plan

TIER 2: SELECTED

Classroom strategies, small groups, individual interventions

Examples: Individual counseling, group counseling, specific-class lessons, behavior contracting, differential reinforcement, small-group or individual Social emotional learning

TIER 1: UNIVERSAL (ALL STUDENTS)

School/class-wide, equity, and culturally relevant and responsive systems and supports

Examples: PBIS (school-wide expectations, activities, assemblies, and incentives related to behavior); social-emotional learning; teacher trainings; parents workshops; physiology-hygiene, sleep, stress management

CLICK HERE TO COMPLETE A COUNSELING REQUEST FORM AND/OR CONTACT DR. INGRAM WITH QUESTIONS.

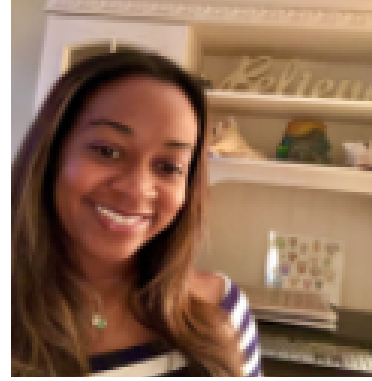
WUSD CARE TEAM

ELEMENTARY COUNSELING PROGRAM



Nisha Dugal, Ed.D.

Director of Student Support services
ndugal@wusd.org



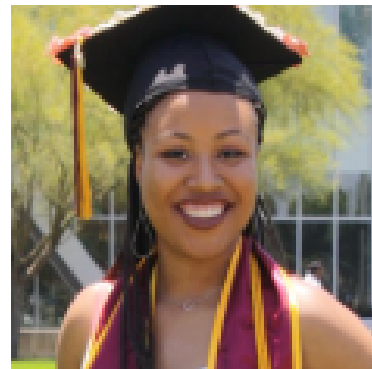
Monique Ingram, Ph.D., LMFT, PPS

District Elementary School Counselor Coordinator
mingram@wusd.org



Julie Walker, LMFT

Elementary School clinician-Counselor
jwalker@wusd.org



Troi Bucher

School Counselor Intern
Cabrillo, 138th
tboucher@temp.wiseburn.org



Jennifer Kuchler

Mental Health Trainee,
Anza, Cabrillo, 138th St.
jkuchler@temp.wiseburn.org



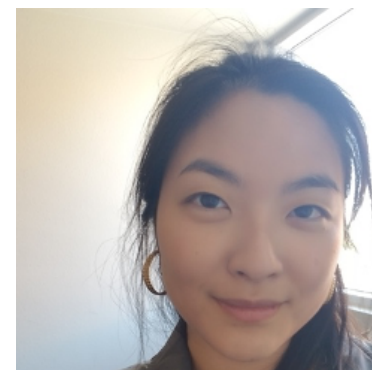
Megan Venegas

School Counselor Intern
Anza
mvenegas@aide.wiseburnusd



DianNa Herald

Mental Health Intern, Psychology Doctoral Student
contact Dr. Ingram with questions



Dianne Kong

Mental Health Intern, Psychology Doctoral Student
contact Dr. Ingram with questions