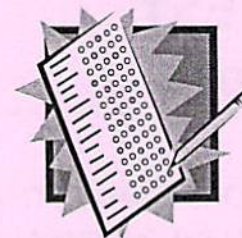


ACT or SAT



PURPOSE: College admission index requirement
 Placement into college classes - English and math
 Academic scholarships from universities

TAKE IT 2-3 TIMES AFTER SECONDARY MATH II OR DURING YOUR JUNIOR YEAR

ACT	SAT 1 or SAT 11
www.actstudent.org	www.collegeboard.com
English, Math Science, and Reading Tests	SAT 1 Verbal and Math Tests SAT 11 Subject Tests
Accepted by all universities in the U.S.	Required by some universities outside of Utah— mainly east and west coast
Offered 6 times a year at SHS on Saturdays	Offered at local universities—check with the testing department.

PRACTICE WEBSITES

www.act.org, www.collegeboard.com, utahfutures.org

testprepreview.com, march2success.com, www.kaplan.com, academy.act.org

SHS generally offers two prep classes in February after school prior to the Free Junior ACT. The sign up is in the main office. It will be advertised via email and on the announcements.

ADMISSION INDEX FOR UTAH'S PUBLIC COLLEGES AND UNIVERSITIES

Test Scores		GPA																													
		□ Typical Scholarship Range										□ Admission to College Minimum 80-95 (varies)																			
ACT	SAT	4.0	3.9	3.8	3.7	3.6	3.5	3.4	3.3	3.2	3.1	3.0	2.9	2.8	2.7	2.6	2.5	2.4	2.3	2.2	2.1	2.0	1.9	1.8	1.7	1.6	1.5	1.4	1.3	1.2	1.1
36	1600	142	140	139	137	135	133	132	130	128	126	124	123	121	119	117	116	114	112	110	108	107	105	103	101	100	98	96	94	93	91
35	1580	140	138	137	135	133	131	130	128	126	124	122	121	119	117	115	114	112	110	108	106	105	103	101	99	98	96	94	92	91	89
34	1530	138	136	135	133	131	129	128	126	124	122	120	119	117	115	113	112	110	108	106	104	103	101	99	97	96	94	92	90	89	87
33	1460	136	134	133	131	129	127	126	124	122	120	118	117	115	113	111	110	108	106	104	102	101	99	97	95	94	92	90	88	87	85
32	1410	134	132	131	129	127	125	124	122	120	118	116	115	113	111	109	108	106	104	102	100	99	97	95	93	92	90	88	86	85	83
31	1306	133	131	130	128	126	124	123	121	119	117	115	114	112	110	108	107	105	103	101	99	98	96	94	92	91	89	87	85	84	82
30	1320	131	129	128	126	124	122	121	119	117	115	113	112	110	108	106	105	103	101	99	97	96	94	92	90	89	87	85	83	82	80
29	1280	129	127	126	124	122	120	119	117	115	113	111	110	108	106	104	103	101	99	97	95	94	92	90	88	87	85	83	81	80	79
28	1240	127	125	124	122	120	118	117	115	113	111	109	108	106	104	102	101	99	97	95	93	92	90	88	86	85	83	81	79	78	76
27	1210	126	124	123	121	119	117	116	114	112	110	108	107	105	103	101	100	98	96	94	92	91	89	87	85	84	82	80	78	77	75
26	1170	124	122	121	119	117	115	114	112	110	108	106	105	103	101	99	98	96	94	92	90	89	87	85	83	82	80	78	76	75	73
25	1140	122	120	119	117	115	113	112	110	108	106	104	103	101	99	97	96	94	92	90	88	87	85	83	81	80	79	76	74	73	71
24	1100	120	118	117	115	113	111	110	108	106	104	102	101	99	97	95	94	92	90	88	86	85	83	81	79	78	76	74	72	71	69
23	1060	118	116	115	113	111	109	108	106	104	102	100	99	97	95	93	92	90	88	86	84	83	81	79	77	76	74	72	70	69	67
22	1030	117	115	114	112	110	108	107	105	103	101	99	98	96	94	92	91	89	87	85	83	82	80	79	76	75	73	71	69	68	66
21	990	115	113	112	110	108	106	105	103	101	99	97	96	94	92	90	88	87	85	83	81	80	79	76	74	73	71	69	67	66	64
20	950	113	111	110	108	106	104	103	101	99	97	95	94	92	90	88	87	85	83	81	79	78	76	74	72	71	69	67	65	64	62
19	910	111	109	108	106	104	102	101	99	97	95	93	92	90	88	86	85	83	81	79	77	76	74	72	70	69	67	65	63	62	60
18	860	109	107	106	104	102	100	99	97	95	93	91	90	88	86	84	83	81	79	77	75	74	72	70	68	67	65	63	61	60	58
17	820	108	106	105	103	101	99	98	96	94	92	90	89	87	85	83	82	80	78	76	74	73	71	69	67	66	64	62	60	59	57
16	770	106	104	103	101	99	97	96	94	92	90	88	87	85	83	81	80	79	76	74	72	71	69	67	65	64	62	60	58	57	55
15	720	104	102	101	99	97	95	94	92	90	88	86	85	83	81	79	76	74	72	70	69	67	65	63	62	60	58	56	55	53	51
14	670	102	100	99	97	95	93	92	90	88	86	84	83	81	79	77	76	74	72	70	68	67	65	63	61	60	58	56	54	53	51
13	600	100	98	97	95	93	91	90	88	86	84	82	81	79	77	75	74	72	70	68	66	65	63	61	59	58	56	54	52	51	49
12	540	99	97	96	94	92	90	89	86	85	83	81	80	79	76	74	73	71	69	67	65	64	62	60	58	57	55	53	51	50	48
11	480	97	95	94	92	90	88	87	85	83	81	79	78	76	74	72	71	69	67	65	63	62	60	58	56	55	53	51	49	48	46
10	430	95	93	92	90	88	86	85	83	81	79	77	76	74	72	70	69	67	65	63	61	60	58	56	54	53	51	49	47	46	44
9	400	93	91	90	88	86	84	83	81	79	77	75	74	72	70	68	67	65	63	61	59	58	56	54	52	51	49	47	45	44	42
7	350	90	88	87	85	83	81	80	79	76	74	72	71	69	67	65	64	62	60	58	56	55	53	51	49	47	46	44	42	41	39
6	320	88	86	85	83	81	79	78	76	74	72	70	69	67	65	63	62	60	58	56	54	53	51	49	47	46	44	42	40	39	37
5	290	86	84	83	81	79	77	76	74	72	70	68	67	65	63	61	60	58	56	54	52	51	49	47	45	44	42	40	38	37	35

ACT TEST

2020-2021



HIGH SCHOOL CODE: 450418

TEST CENTER CODE: 224300

ALL JUNIORS WILL TAKE A FREE ACT TEST ON MARCH 9th AT SYRACUSE HIGH

**Students will register for this free test at school, all other test registrations must be completed online.*

ACT TEST \$52.00

(Basic fee includes sending scores to four college choices)

WRITING TEST + \$16.00

(Optional, does not affect overall score. Some colleges may require)

LATE REGISTRATION - (Additional \$30.00)

ACT TEST DATE	REGISTRATION DEADLINE	LATE REGISTRATION
September 12, 2020	August 28, 2020	August 28, 2020
October 24, 2020	September 17, 2020	September 18-25, 2020
December 12, 2020	November 6, 2020	November 7-20, 2020
February 6, 2021	January 8, 2021	January 9-15, 2021
April 17, 2021	March 12, 2021	March 13-26, 2021
June 12, 2021	May 7, 2021	May 8-21, 2021
July 17, 2021 (Not offered at SHS)	June 18, 2021	June 19-25, 2021

REGISTRATION

- **REGISTER ON LINE** at www.actstudent.org High School Code: 450418
Remember to **UPLOAD** a picture of yourself Test Center Code: 224300
- Students of financial need (fee waiver/free or reduced lunch) are eligible for 2 free tests; one junior year and one senior year. See Mrs. Ogan in the Counseling Center to receive your test voucher.
- Students with an IEP or 504 must coordinate with their IEP file manager or 504 coordinator to make arrangements with ACT to receive accommodations. It takes ACT 7-8 weeks to review accommodations. Note, not all accommodations are granted.
- Test Information Release: receive test questions, answer key, and a list of your answers—available only December, April and June. (Additional \$22—optional)

TESTS ARE TAKEN AT SYRACUSE HIGH ON SATURDAYS

On the Day of the Test:

- Arrive at Syracuse High by 7:45 a.m. to find your room assignment.
- Bring photo identification, your test center admission ticket, three No. 2 pencils, and an approved calculator for the math test.

Residual ACT Tests are available at WSU (www.weber.edu/TestingCenter) \$65. Register with Student Services Testing Center. Tests are only valid at the location taken.