

## WHAT TO DO IF THERE IS A SUSPECTED OR CONFIRMED CASE OF COVID-19 IN THE METHODIST COLLEGE COMMUNITY

### THE MAIN SYMPTOMS OF COVID-19 ARE:

- **a high temperature** – this means you feel hot to touch on your chest or back (you do not need to measure your temperature)
- **a new, continuous cough** – this means coughing a lot for more than an hour, or 3 or more coughing episodes in 24 hours (if you usually have a cough, it may be worse than usual)
- **a loss or change to your sense of smell or taste** – this means you've noticed you cannot smell or taste anything, or things smell or taste different to normal

Most people with coronavirus have at least 1 of these symptoms.

### PUBLIC HEALTH AGENCY GUIDANCE (PHA)

The most up-to-date guidance from the Public Health Agency on what to do if you think you or a member of your household has one or more symptoms of COVID-19 is available by clicking on this link:

<https://www.publichealth.hscni.net/covid-19-coronavirus/testing-and-tracing-covid-19/testing-covid-19>

At the time of writing, the PHA advice is:

- if you have symptoms of coronavirus or a positive test, you will need to stay at home for at least 10 days;
- if you live with someone who has symptoms or a positive test, you will need to stay at home for 14 days from the day the first person in the home started having symptoms;
- however, if you develop symptoms during this 14-day period, you will need to self-check in accordance with Test and Trace guidance and stay at home for 10 days from the day your symptoms started (regardless of what day you are on in the original 14-day period);
- 10 days after your symptoms started, if you do not have a high temperature, you do not need to continue to self-isolate.
- If you still have a high temperature, keep self-isolating until your temperature returns to normal.
- You do not need to self-isolate if you just have a cough after 10 days, as a cough can last for several weeks after the infection has gone.

**If you have any of the main symptoms of coronavirus (COVID-19), get a test as soon as possible and stay at home until you get the result.**

**Sections 10 and 11** of the College's Return to School Protocol provides details of how the school will manage a suspected or actual case of coronavirus.

If anyone reports being unwell with COVID-19 symptoms while in school **they will be sent home immediately**. The College will keep a record of this and request that a parent / guardian record their acknowledgement of this action. If a member of staff (who was wearing the appropriate PPE and adhering to the social distancing guidelines) has helped someone with COVID-19 symptoms they **do not** need to go home unless they develop symptoms themselves.

If they are at home and they develop symptoms, they should **not come into school**, neither should any siblings attending Methody. They should follow the PHA guidance (see above) and obtain a test.

**TESTING:** Anyone waiting for a test result must **NOT** come in to school until they get the result.

**If the test result is negative:**

- The pupil or member of staff can return to school providing they are well enough and have not had a fever for 48 hours.

**If the result is positive:**

- The guidance from the PHA on staying at home and self-isolating must be followed. The pupil or staff member will be contacted by the Contact Tracing Service in the PHA, and will need to share information about their recent interactions. This could include household members, people with whom they have been in direct contact, or been within 2 metres for more than 15 minutes.
- Enhanced cleaning will be carried out within any classroom(s) in which an individual who has a confirmed case of COVID-19 has been in. This will help to minimise the risk of the spread of the virus. If enhanced cleaning cannot take place, then the classroom(s) will be closed off and secured until enhanced cleaning has been completed. Only after this, will staff and children return to this area.
- Public areas where a confirmed case has passed through and spent minimal time in (such as corridors) but which are not visibly contaminated with body fluids will be cleaned in accordance with the normal system of work.
- PHA guidance under the Test and Trace and Protect programme will be followed by all staff and pupils who have been in **close contact** with someone who tests positive for Covid-19. Contact in this context means spending 15 or more minutes within 2 metres of distance of the person infected. In a classroom situation this would mean those pupils sitting within 2m of a pupil who has tested positive for more than 15 minutes. Staff have been asked to keep accurate seating plans for each class to help identify those pupils who may have had close contact with the individual. Passing in corridors and short periods of contact **do not** present a significant risk to staff or pupils. The wearing of masks, regular hand hygiene and social distancing all help to mitigate the risk of the infection spreading.
- Methody will co-operate with and act on advice given by the Contact Tracing Service (PHA). The Contact Tracing Service will advise on what further measures need to be taken by the school. If PHA advises that the school should close, then staff will commence on line learning until such times as the school reopens.
- Pupils who are self-isolating will have work provided for them in the same way as pupils have been provided with work during periods of medium to long term illness in the past.
- Pupils or members of staff can return to school when they have completed the necessary period of isolation as advised by the Test, Trace and Protect service. This will help contain any potential transmission to those staff/pupils and will also assist in protecting the wider community.

Below are a number of flow charts, to help you decide what you need to do. As the health situation is fluid, and guidance from the Government and health agencies changes accordingly, these charts must be used in conjunction with the advice on the PHA website.

<https://www.publichealth.hscni.net/covid-19-coronavirus/testing-and-tracing-covid-19/testing-covid-19>

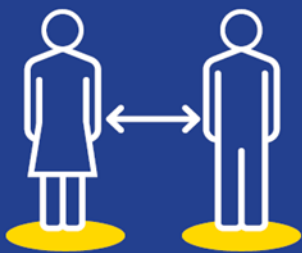
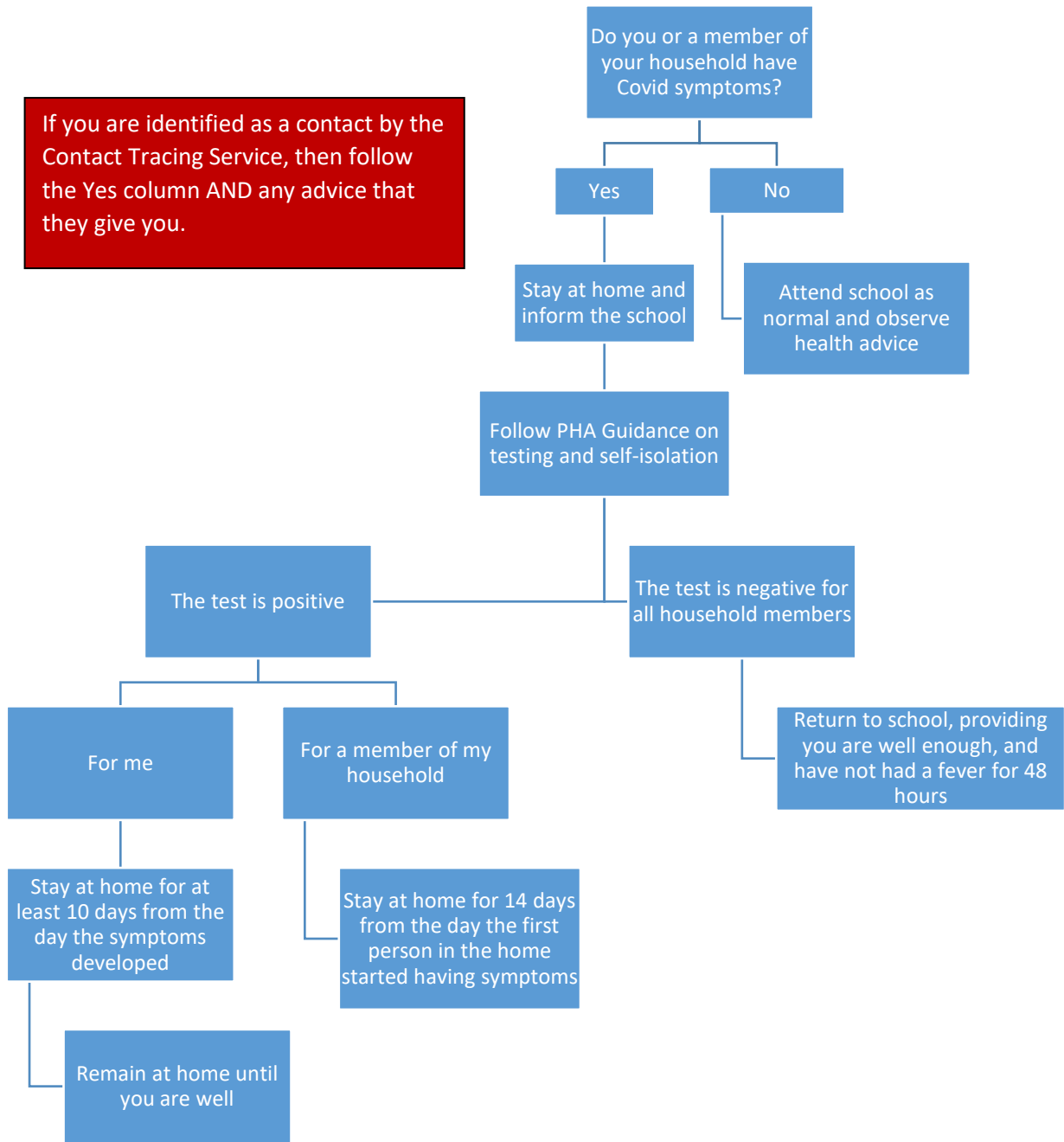
You may find these sources of information helpful in deciding what you can do at home to manage the situation and reduce the risk of infection.

<https://www.nhs.uk/conditions/coronavirus-covid-19/>

<https://www.nidirect.gov.uk/campaigns/coronavirus-covid-19>

# If a pupil, member of staff or family member develops suspected symptoms at home or are contacted by the Contact Tracing Service

If you are identified as a contact by the Contact Tracing Service, then follow the Yes column AND any advice that they give you.



Please keep your distance



Wash your hands



Catch it, bin it, kill it



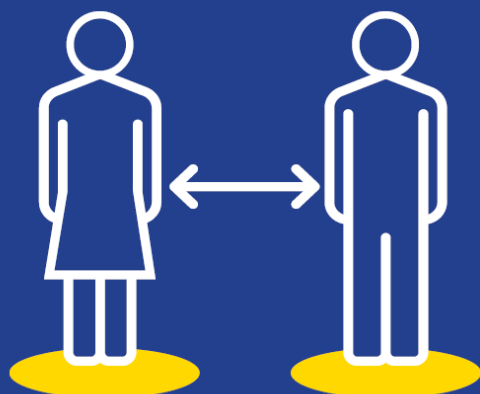
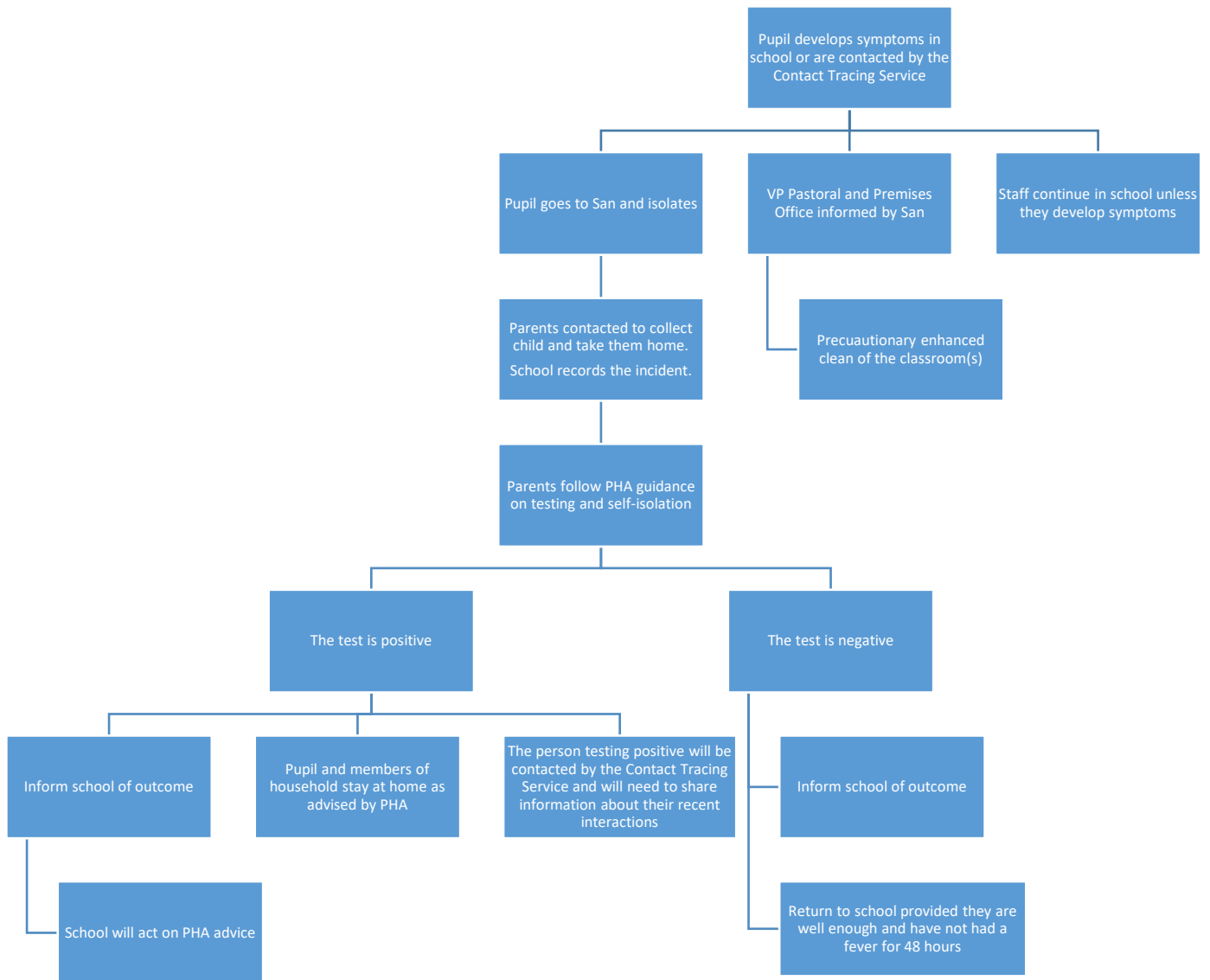
Be kind and stay safe

STAY ALERT CONTROL THE VIRUS SAVE LIVES



Methodist College Belfast

## If a pupil develops suspected symptoms while in school or they are contacted by the Contact Tracing Service



# Please keep your distance

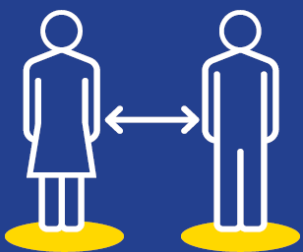
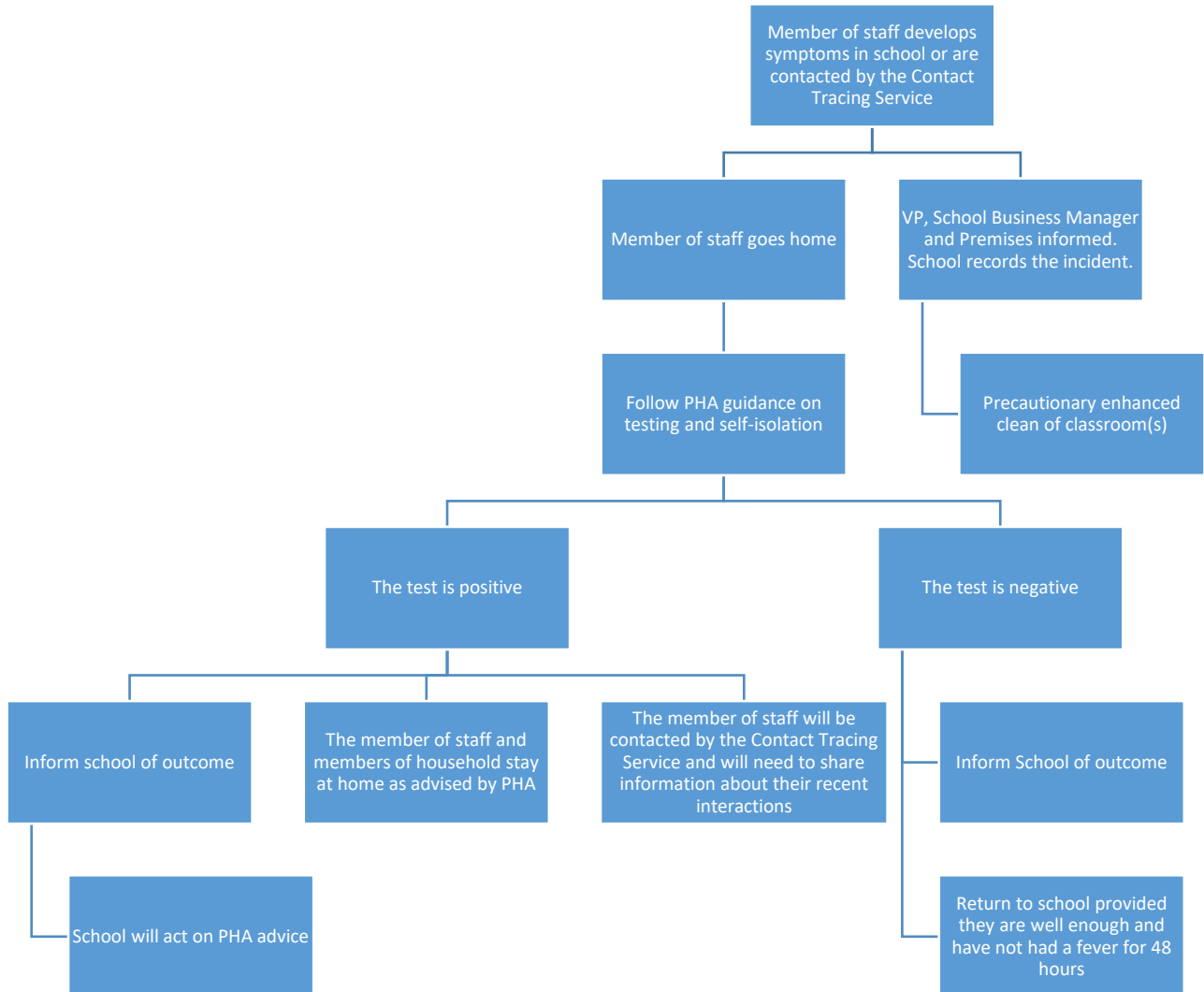
Help protect yourself and others from Coronavirus

STAY ALERT    CONTROL THE VIRUS    SAVE LIVES



Methodist College  
Belfast

## If a member of staff develops suspected symptoms while in school or they are contacted by the Contact Tracing Service



**Please keep your distance**



**Wash your hands**



**Catch it, bin it, kill it**



**Be kind and stay safe**

**STAY ALERT CONTROL THE VIRUS SAVE LIVES**



**Methodist College  
Belfast**