



The mission of Robbinsdale Area Schools is to inspire and educate all learners to develop their unique potential and positively contribute to their community.

ENROLLMENT
12,397
As of October 1, 2019



SEVEN CITIES
The district serves all or parts of:

- Brooklyn Center
- Brooklyn Park
- Crystal
- Golden Valley
- New Hope
- Plymouth
- Robbinsdale



Armstrong High School is designated as an AP Capstone school, one of the first two schools in Minnesota to offer this program from the CollegeBoard.

The District offers a full continuum of K-12 International Baccalaureate (IB) programmes. IB schools include Lakeview Elementary, Robbinsdale Middle School and Cooper High School.

Serving all learners — infants through Adults

11

Elementary Schools

4

Middle Schools

4

High Schools*

2

Learning Centers

*Two traditional high schools, an alternative high school and a fully-accredited online high school.

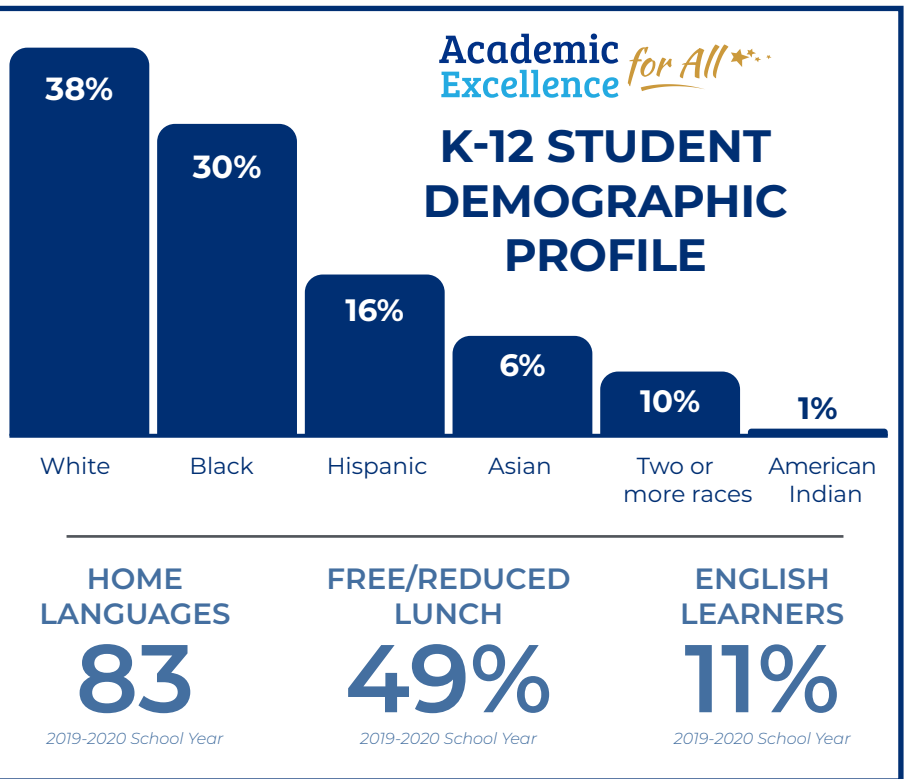


MAGNET SCHOOLS

Arts immersion at FAIR School Pilgrim Lane (K-4) and FAIR School Crystal (5-8)

Spanish language at Robbinsdale Spanish Immersion (K-5)

Science, technology, engineering, math (STEM) at the School of Engineering and Arts (K-5)



HIGHLY-QUALIFIED, EXPERIENCED TEACHERS

20% Less than 3 years experience

26% 3-10 years experience

54% More than 10 years

2018-2019 School Year



School of Engineering and Arts (SEA)

- 2020 National Green Ribbon School
- 2018 National Blue Ribbon School

Robbinsdale Area Schools and Hennepin Technology College partnership to develop career and technical educational opportunities in

ARTICULATED SKILLED TRADES

ROBBINSDALE AREA SCHOOLS EQUITY POLICY

Adopted July 9, 2018

The mission of Robbinsdale Area Schools (RAS) is to inspire and educate all learners to develop their unique potential and positively contribute to their community:

See All, Serve All, Support All! The Unified District Vision (UDV) and Board Core Values are embodied by the RAS Equity Definition.



RAS defines equity as setting the conditions, to the extent possible, to assure access and opportunity for ALL students, while eliminating gaps in performance based on race, socio-economic status, and language. Discriminatory policies and practices are not tolerated.

RAS is committed to the provision of a barrier-free learning environment. Graduating students ready for careers, skilled trades, and college is our priority. We will actively eliminate district policies, structures, and practices which perpetuate inequities and contribute to disproportionality in access and outcomes.

Recognition of the strengths within our staff and students is an essential core value. These strengths are related to factors such as: race; culture; ethnicity; language; national origin; socioeconomic status; gender; sexual orientation; age; ability; religion; and physical appearance.

To secure this vision, RAS will focus on the individual and unique needs of each student.

Our UDV has four goals:

1. Implement policies and practices that open pathways to academic excellence for all students;
2. Utilize culturally responsive teaching and personalized learning for all students;
3. Engage family and community members as partners;
4. Engage and empower students by amplifying student voice.



Visit us online at rdale.org

Fulfilling the UDV Through Equity

In our work to fulfill the requirements of the World's Best Workforce and live up to our Unified District Vision (UDV), we embrace the following shared values, and adopt them as the framework for our collective efforts to prepare each student to develop their unique potential. We commit to ensuring fairness, equity and inclusion as essential principles of our district, fully integrating those principles into all our governance, leadership, policies, programs, operations and practices. We commit to providing a district-wide culture which:

- Holds high expectations of students and staff, through appreciation of varied teaching and learning styles.
- Allows for individualized and systemic personal development opportunities that support teachers and students.
- Intentionally utilize culturally relevant and responsive curricula, and pathways that widen access to educational opportunities and lifelong success.
- Identify, develop and apply best instructional practices that have demonstrably made a positive difference for students to reduce prevalent and persistent learning outcome gaps.
- Allocate the many financial, capital and human resources of RAS equitably.
- Facilitate equitable access to co-curricular and extra-curricular activities, social services, tutoring, and enrichment opportunities.
- Engage, and collaborate with our families, students, residents, communities, and stakeholders promoting their active involvement as an essential component of the district's responsibility for effective and equitable governance.

The Board has the expectation all district and school site decision makers, teachers, administrators, and other staff will be accountable for building a district-wide culture of equity. The Superintendent is charged to develop a plan with measurable accountability standards and procedures that can be reported transparently to the public.

The equity policy is the lens guiding existing and future policies which impact student learning and resource allocation. Our district's policy development process will utilize insights from the equity policy.

The Equity Policy of Robbinsdale Area Schools will be reviewed annually and approved by the Board.