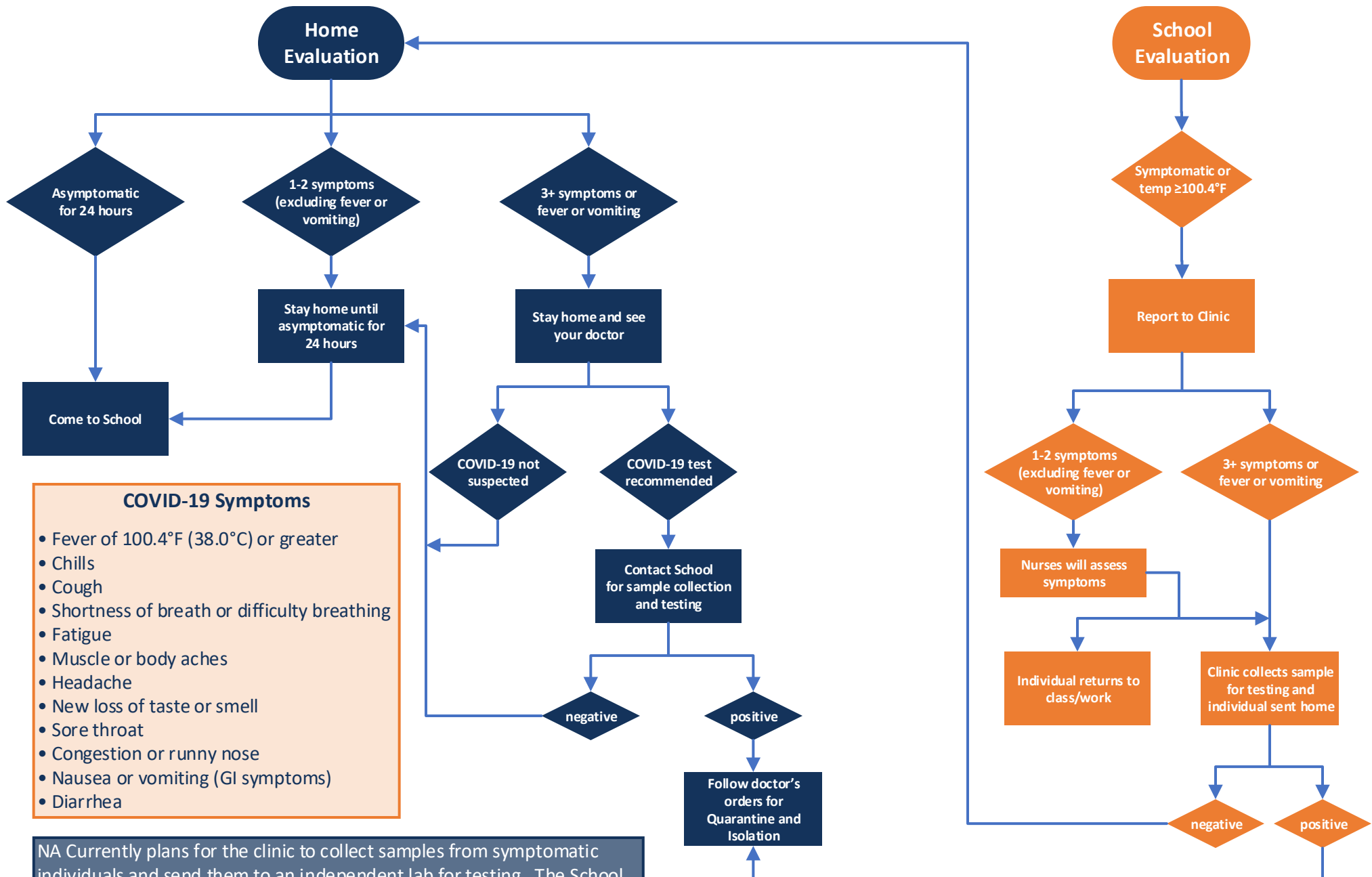


DECISION TREE: COVID-19 EVALUATION

In the event of a positive case we will consult with a team of medical and public health authorities on appropriate measures to protect the health and safety of the community.



- COVID-19 Symptoms**
- Fever of 100.4°F (38.0°C) or greater
 - Chills
 - Cough
 - Shortness of breath or difficulty breathing
 - Fatigue
 - Muscle or body aches
 - Headache
 - New loss of taste or smell
 - Sore throat
 - Congestion or runny nose
 - Nausea or vomiting (GI symptoms)
 - Diarrhea

NA Currently plans for the clinic to collect samples from symptomatic individuals and send them to an independent lab for testing. The School will notify families of positive test results upon receipt.