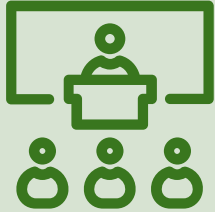




Roles and Responsibilities of Comprehensive Remote Learning



EDUCATORS

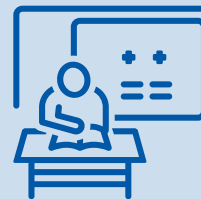
- Build a sense of community and connectedness
- Connect with students daily
- Deliver teacher-facilitated instruction through live/recorded classroom sessions and/or offline activities.

- Provide individual and group feedback on assignments
- Create self-directed learning opportunities
- Create and communicate availability to students and parents/caregivers
- Understand roles of school personnel working with students who are emergent bilinguals and students experiencing disabilities.



PARENTS & CAREGIVERS

- Review school-specific schedules and guidance from teachers.
- Review districtwide guidance on plans for grading.
- Review any school community messages.
- Support your child(ren) with checking and submitting assignments.
- Contact your child's/childrens' school(s) if you have questions.
- Notify teachers or school administrators with any concerns about progress or additional support needed.
- Ensure that students adhere to their school's contract for appropriate behavior on web-enabled devices.



STUDENTS

- Connect with teachers on a regular basis.
- Participate in offline assignments, online classes, and recorded teacher-facilitated activities, as appropriate.
- Review and complete assignments, whether offline, online, or blended.
- Ask questions or seek support when needed.
- Self-assess your understanding of the learning targets.
- Incorporate feedback from teachers into future work.
- Attend regularly scheduled check-ins with teacher and let them know where you need help/clarification and where things are going well.
- Share your knowledge and interests with peers and educators.