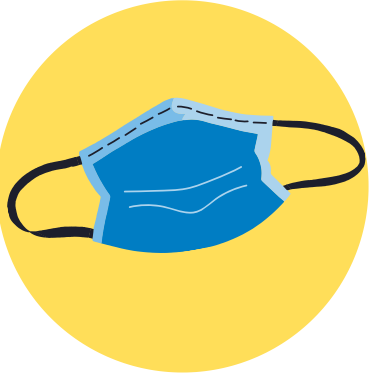


# HOW TO WEAR A FABRIC MASK SAFELY



Start with a clean mask



Clean hands before touching the mask



Adjust the mask without leaving gaps on the sides



Cover your mouth, nose, and chin



Avoid touching the mask



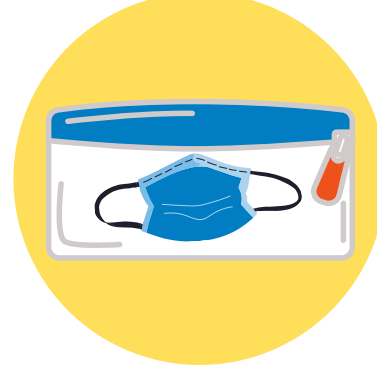
Clean hands before removing the mask



Remove the mask by the straps



Wash the mask every day



Store the mask in a resealable bag



# HEALTHY STUDENTS

CARROLL SCHOOL