

#279 READY TO RESTART

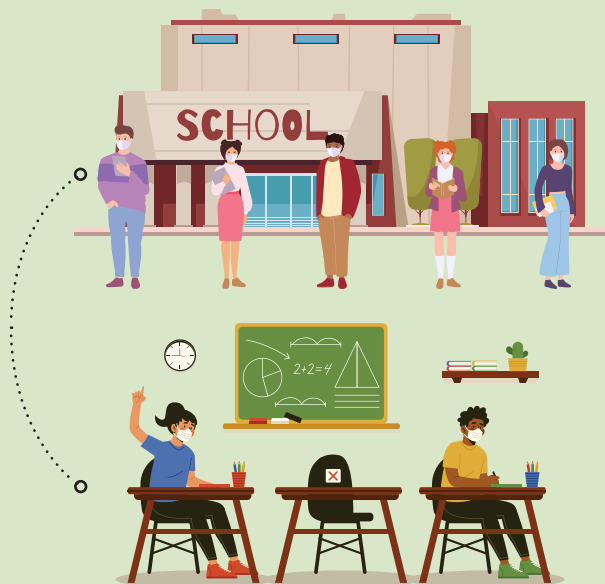
OSSEO AREA SCHOOLS

ISD 279

The Minnesota Department of Education has outlined three instructional models for the 2020-2021 school year. We anticipate moving in and out of these three models throughout the year in response to state direction and virus activity.

In addition, the school district is offering an optional Distance Learning Academy for families who wish to commit to a full year of distance learning only.

IN-PERSON SCHOOL



Students attend school every day, with additional precautions including wearing masks and practicing social distancing where possible.

HYBRID MODEL



Students attend school in-person part-time in smaller groups to limit the number of students in a classroom and allow for physical distancing. When not at school, students complete teacher-assigned work remotely.

DISTANCE LEARNING



Distance learning will be used if students and staff are not allowed to be in buildings as directed by MDE. Students participate in distance learning full-time. This year's program reflects improvements over last year based on staff, parent and student feedback.



NEW DISTANCE LEARNING ACADEMY



A new distance learning option for families

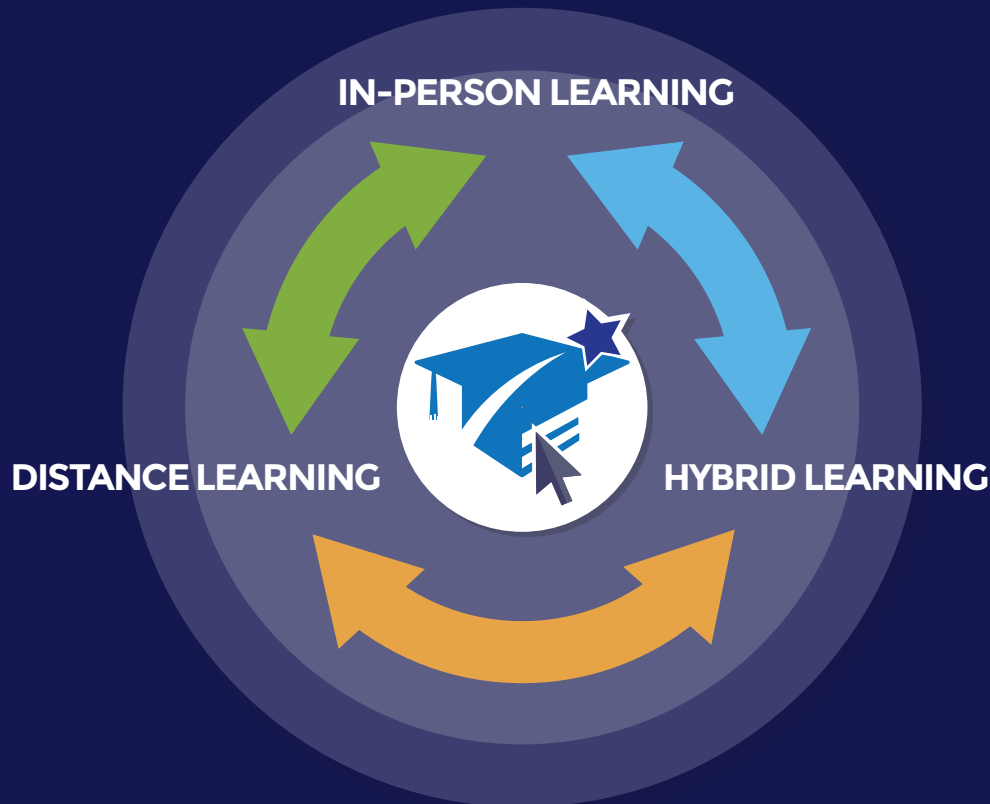
Families who prefer a 100% distance learning option may register for the new Distance Learning Academy. This option, taught by District 279 teachers, provides an alternative for those who do not want their child to have any on-campus/in-person instruction. The Academy will operate independently from the in-person, hybrid or distance learning models that may be employed throughout the year.

Cov xovxwm ntaub ntawv no yuav muaj ua lus Hmoob sai li sai tau thaum muab txhais tiav tag lawv.
 Macluumaadkan waxaa lagu bixin doonaa Soomaali isla marka turjumaada la dhameeyo.
 Esta información será proporcionada en español una vez que la traducción esté finalizada.
 Thông tin này sẽ được cung cấp bằng Tiếng Việt ngay sau khi bản dịch hoàn tất.

TWO CHOICES FOR FAMILIES

Osseo Area Schools families have two choices for the 2020-2021 school year:

1. Follow the school district's fluid implementation of in-person, hybrid, or distance learning models, moving in and out of them as needed according to state guidance and coronavirus activity OR



2. Choose a 100% distance learning option (Distance Learning Academy) if you prefer the certainty that your child's education in 2020-2021 will not include any in-person/on-campus instruction.



*More detailed information will be provided on the district website, www.district279.org, as it becomes available.
Please note: This information is subject to change throughout the school year as district practices and state guidance change.*

IN-PERSON MODEL (ALL STUDENTS, PRE-K* THROUGH GRADE 12)

*Applies to students enrolled in the free half-day, every day pre-K programs at Birch Grove, Crest View, Edinbrook, Fair Oaks, Garden City, Palmer Lake, Park Brook, and Zanewood

SAFETY PRECAUTIONS



- ✓ Classroom seating arrangements will be created according to state guidelines. For example, students will no longer be arranged in small groups.



- ✓ Bus drop-off and pick-up times may be staggered by a few minutes in order to minimize groups of students at arrival and dismissal.



- ✓ Per the governor's executive order, face coverings will be required for staff and students in kindergarten through grade 12. ***Exemptions will be allowed according to the governor's order.* Early childhood and pre-kindergarten students will be encouraged, but not required, to wear face coverings.



- ✓ Students are expected to wash hands or use hand sanitizer throughout the day, especially before meals. Hand sanitizer stations will be provided at each school.



- ✓ School lunch will offer hot and cold options with safety practices in place, e.g., no self-service and limited use of high-touch areas such as keypads. Additional spaces will be identified for students to eat lunch.



- ✓ Schools will receive extra cleaning and disinfecting. You'll see clear barriers in offices at the first point of contact, new signage, and areas that have been redesigned to promote social distancing.



- ✓ Mechanical systems will be adjusted to increase outside air intake.



- ✓ All staff, students and visitors will participate in a daily health screening (series of questions).

TEACHING AND LEARNING; STUDENT SUPPORT

- ✓ Your child will have high-quality and engaging teacher-led instruction 5 days a week.
- ✓ The first few weeks will have a strong focus on building relationships, identifying learning gaps from last spring and summer, and helping students feel engaged and connected to their school.
- ✓ To the greatest extent possible, instruction will look and feel like it did prior to the COVID-19 pandemic.

ELEMENTARY

- ⇒ Staff will give extra attention to helping young scholars adjust to being back in school, interacting with friends, and strengthening academic skills.



MIDDLE SCHOOL

- ⇒ Schools will offer before and/or after school programming to address learning gaps from the previous spring and summer.



HIGH SCHOOL

- ⇒ Passing times may be staggered and traffic patterns revised in order to reduce the number of students in hallways at the same time.
- ⇒ Schools will offer additional programming to address learning gaps from the previous spring and summer.
- ⇒ In order to plan for bus capacity, high school (gr. 9-12 only) student families will be requested to register for bus transportation.



HYBRID MODEL (ALL STUDENTS, PRE-K* THROUGH GRADE 12)

*Applies to students enrolled in the free half-day, every day pre-K programs at Birch Grove, Crest View, Edinbrook, Fair Oaks, Garden City, Palmer Lake, Park Brook, and Zanewood

SAFETY PRECAUTIONS



Safety precautions will be similar to those in the in-person model, with strict social distancing and capacity limits.

TEACHING AND LEARNING; STUDENT SUPPORT

- ✓ School will be held 5 days a week with high-quality and engaging teacher-led instruction and/or support each day.
- ✓ To reduce the number of students in the school building at any time, students will be assigned to either Group A or Group B.
 - ▶ **Group A** students will attend school in person on Mondays and Wednesdays, with teacher-facilitated remote learning on Tuesdays and Thursdays.
 - ▶ **Group B** students will attend school in person on Tuesdays and Thursdays, with teacher-facilitated remote learning on Mondays and Wednesdays.
 - ▶ **Every Friday**, all students will participate in a distance learning day (attendance will be taken).
 - On remote learning days, students can expect some or all of the following: live online instruction, independent work, online check-ins, and pre-recorded instruction and tutorials.
 - Teachers will use Fridays for lesson planning, collaboration, and creation of instructional content.
 - Fridays will also allow for thorough cleaning of buildings and the delivery of meals and materials.
 - ▶ **Whenever possible**, siblings will be assigned to the same group.

Mon



Tue



Wed



Thu



Fri



ELEMENTARY

- ⇒ Every day, even on distance learning days, there will be some sort of live instruction by teachers.
- ⇒ Schools will seek to deliver instruction on distance learning days in a way that provides flexibility for elementary families, especially parents/caregivers who work during the day.



MIDDLE SCHOOL

- ⇒ On in-person days, schools will offer before and/or after-school programming to help students address learning gaps from the previous spring and summer.
- ⇒ On remote learning days, students will have access to virtual academic support rooms staff by licensed and non-licensed staff.



HIGH SCHOOL

- ⇒ The pace of learning will be maintained in order to keep students on track to graduate.
- ⇒ Schedules will be adjusted to accommodate student participation in hands-on courses such as ceramics, FACS and tech ed.



DISTANCE LEARNING MODEL (ALL STUDENTS, PRE-K* THROUGH GRADE 12)

*Applies to students enrolled in the free half-day, every day pre-K programs at Birch Grove, Crest View, Edinbrook, Fair Oaks, Garden City, Palmer Lake, Park Brook, and Zanewood

TEACHING AND LEARNING; STUDENT SUPPORT

- ✓ School will be held 5 days a week, with clearly articulated student schedules and teacher-directed remote learning every day.
- ✓ Staff schedules, including regular office hours for secondary teachers, will be provided to all families.
- ✓ Students will have full access to grade-level and subject content delivered through remote instruction.



- ▶ Students can expect some or all of the following: live online instruction by their teacher, independent work, online check-ins, and pre-recorded instruction and tutorials.

- ✓ Communication from school to home will be more streamlined than it was in spring 2020.



SAMPLE ELEMENTARY DISTANCE LEARNING DAY (Sample only; schedule will vary among schools)



Morning	Mid-day	Afternoon
Live direct instruction	Lunch, movement breaks	Pre-recorded instruction and tutorials, small group instruction, independent work, academic support
Independent reading		
Pre-recorded instruction and tutorials, small group instruction, independent work		



ELEMENTARY

- ⇒ Temperature screenings will be done for students and staff at child care locations (distance learning only).



MIDDLE SCHOOL

- ⇒ Students will have access to virtual academic support rooms staffed by licensed and non-licensed staff.



HIGH SCHOOL

- ⇒ Certain electives may be significantly modified in order to run in a distance learning model.



NEW: DISTANCE LEARNING ACADEMY

Families who want the certainty of distance learning for the entire year with no movement between models may opt into a districtwide (K-12 only) Distance Learning Academy. To register for the optional academy, a year-long commitment is required.



At the elementary level, Distance Learning Academy instruction will be similar to the regular distance learning model.



At the secondary level, the Distance Learning Academy will focus on core subjects/graduation requirements, i.e., advanced, AP and/or electives may not be available.



Distance Learning Academy students will be "dual-enrolled," which means they keep their enrollment status at their home school (all schools, including magnets).

The Distance Learning Academy is a districtwide program drawing from teachers across the school district. Special education and language learner services will be provided. Students in grades K-5 will complete lessons in Seesaw and students in grades 6-12 will complete lessons in Schoology.

Families must register for the Distance Learning Academy by 9 p.m. on Sunday, August 9.

Requests to leave the Distance Learning Academy and return to their home school during the school year are not guaranteed. Requests to change will be reviewed prior to the start of each trimester, and accommodations will be based on available licensed teachers and transportation.

Learn more and register for the Academy at <https://bit.ly/279distancelearningacademy>

Why does the Distance Learning Academy require a full-year commitment?

A year-long commitment to the Distance Learning Academy is necessary so the district can staff it properly (including consideration of specific licensures), schedule students appropriately in courses, and coordinate transportation following MDE/MDH guidelines.

UNDER EACH INSTRUCTIONAL MODEL, YOU CAN EXPECT:

SAFETY PRECAUTIONS



- ✓ We will follow the guidelines from the MN Dept of Health and the MN Dept of Education.



⇒ Sometimes MDH and MDE require certain actions; sometimes they recommend certain actions.

- If an action is required, you'll see it being carried out in our schools.
- If an action is recommended, you might see it in some places but not others.



- ✓ Each school will designate a school-level COVID-19 coordinator and create a building-specific plan.



- ✓ All staff will be trained on COVID awareness and the proper use of cleaning materials.

- ✓ Field trips will not be offered.



- ✓ Visitors and volunteers will have limited access to buildings.

TEACHING AND LEARNING; STUDENT SUPPORT

- ✓ In each subject area, teachers will focus on the most essential material for students to learn, creating a core foundation of instruction that is integrated into each of the three models to allow for more nimble transitions between models, responding to virus activity.
- ✓ Families who want the certainty of distance learning for the entire year (no movement between models) may opt into a districtwide Distance Learning Academy for K-12 students only.
 - ⇒ To register for the optional academy, a year-long commitment is required.
 - At the elementary level, Distance Learning Academy instruction will be similar to the regular distance learning model.
 - At the secondary level, the Distance Learning Academy will focus on core subjects/graduation requirements, i.e., advanced, AP and/or electives may not be available.
 - Students attending the academy will still be able to participate in school/district extracurricular programs.
 - This will be a districtwide (vs. school-based) program drawing from teachers across the school district.
 - Families must opt into the Distance Learning Academy (see inside brochure) **by 9 p.m. on Sunday, August 9;** Learn more and register at <https://bit.ly/279distancelearningacademy>
- ✓ Attendance will be taken every day in each model.
- ✓ Special education and English learner services will be provided. The delivery may look different, depending on the model, but services will be provided to all identified students.
- ✓ All staff will give extra attention to children's social-emotional learning needs and will work to rebuild relationships between and among students and staff.
- ✓ School nurses and other support staff will provide services.
- ✓ Every student, K through grade 12, will be issued a mobile device and will be expected to keep it accessible for potential pivots between models.
- ✓ Technology support will continue; internet support and resources will be provided as necessary.
- ✓ Child care availability will depend on the model.

Early Childhood and Adult Basic Education students

will receive separate information from their respective programs.

Early Childhood (Arbor View): 763-391-8777

Adult Basic Education: 763-566-5452