

INSIDE



SHAWNEE MISSION SCHOOL DISTRICT

SUMMER 2020



> **Shawnee Mission Strong:
Strong Schools,
Strong Communities**

> **Broadmoor Urban Farm:
Sustainable, Educational
Community Resource**

> **Deep Equity Training
in the Shawnee Mission
School District**



Enjoy KidScape!

Discover the All-Electric House!



Visit the Museum!



JOHNSON COUNTY
KANSAS
Museum

8788 Metcalf Ave
Overland Park, KS
JCPRD.com/Museum jocoahc.com

***Want to advance your career
and enhance your school?***



**Earn a doctorate
degree (Ed.D.)
in curriculum
and instruction
in 3 years.**

- Dissertation is part of coursework
- No admissions test
- Cohort model
- Apply by May 1, 2021 for the Fall 2021 session

Doctorate in Education – 100% Online

global.k-state.edu/education/curriculum-and-instruction/doctorate/

KANSAS STATE
UNIVERSITY

Global Campus

***Do you want to be a teacher
but have the wrong degree?***



**Earn a master's degree
and recommendation
for elementary or
secondary teaching
license online
in 12 months.**

- A convenient, affordable, and practical pathway to teaching
- Learn to teach in your local schools
- Apply by May 1, 2021 for the 2021 cohort

Master of Arts in Teaching – 100% Online

global.k-state.edu/education/master-of-arts-teaching

KANSAS STATE
UNIVERSITY

Global Campus

Features INSIDE



- 4 > A Letter from The Foundation
- 5 > A Message from our Superintendent
- 6 > Shawnee Mission Strong: Strong Schools, Strong Communities
- 8 > Broadmoor Urban Farm: Sustainable, Educational Community Resource
- 10 > Deep Equity Training in the Shawnee Mission School District
- 12 > Introducing Canvas: A New Learning Management System
- 14 > Census 2020: Every Person Counts!
- 14 > Save-the-Date for the Annual Foundation Fall Breakfast

ON THE COVER: SMSD students and alumni volunteer at the Broadmoor Urban Farm.

#SMSDstrong   

Help us share the good news from our district on social media.

INSIDE

Shawnee Mission School District
8200 W. 71st Street
Shawnee Mission, KS 66204

Inside Shawnee Mission School District is published by the Communications Department in the Shawnee Mission School District.

Board of Education

Heather Ousley, President
Mary Sinclair, Vice President
Jamie Borgman
Sara Goodburn
Laura Guy
Jessica Hembree
Brad Stratton



JOHNSON COUNTY
COMMUNITY COLLEGE

YOUR
TOMORROW
STARTS HERE.™

ONLINE CLASSES DELIVERED STRAIGHT TO YOUR LAPTOP.

Enjoy all the benefits of the JCCC experience from the comfort of home.

We offer flexible online and online hybrid classes—all at competitive tuition rates.

Only **\$94 per credit hour** for Johnson County residents.*

Enroll today. jccc.edu/enroll

*Visit jccc.edu/residency for full details.

A Letter from The Foundation

Dear Shawnee Mission Community,
During this time of great uncertainty, we have been humbled by the outpouring of generosity in support of our Shawnee Mission Cares Fund and the Shawnee Mission Education Foundation. We are so grateful to the hundreds in our community who have reached out to help our Shawnee Mission students.

YOU are our heroes, the ones who made it possible for us to continue funding our critical programs. Donations to the Cares Fund can help keep a family afloat when other means of support evaporate. YOU recognize these families are our neighbors in Shawnee Mission and YOU reached out a helping hand.

So thank you for being YOU and supporting our SMSD kids. You are someone who not only cares, but cares enough to take action.

The Shawnee Mission Education Foundation's mission is to enable all Shawnee Mission students to achieve their potential through leadership and scholarship. We know that can't happen without a solid support system. That's where the Cares Fund makes such an impact. The world continues to shift and we continue to adapt and serve the needs of our kids.

Thank you for being our partner. Your generosity and confidence in our work means the world to us - and those we serve. We need everyone's help to make our students successful.

With deep gratitude to our Shawnee Mission Community,
The Board of Directors and Staff of the Shawnee Mission Education Foundation

Board of Directors

Suzy Hall, President
Anthony Springfield, Immediate Past President
Jo Yun, Vice President
Laura McConwell, Secretary
Jim Brown, Treasurer
Leo Nunnink, Development Chairman
Chuck Battey
Drew Billingsley
Chelan David
Dale Filsinger
John Novak
Paul Rodriguez
Angelique Rodriguez-Gunion
Barbara Schoell
Stacy Stotts
Margaret Schramm Thompson
Michelle Zech

Foundation Staff

Kim Hinkle, Executive Director
Dana Chamblin
Terri Izard
Ed Márquez



SMSD Strong: Reopening and Learning in 2020-2021

A Message From the Superintendent

The 2020-2021 school year will be a time of learning for all of us. While there is much that will be different about school throughout this year, our commitment to providing education and opportunities to students in Shawnee Mission stands strong.

We all will work toward our common objective and destination: That every student will have a personalized learning plan that supports them in being college and career ready and have the interpersonal skills important to life success.

Our community has worked tirelessly throughout the spring and summer to determine how best we could make sure learning continues. Students, staff, families, and community members have provided essential expertise and input in developing plans throughout this year. Thousands contributed by participating in Thoughtexchanges and surveys, providing essential insight as we moved forward. Thank you to everyone for your engagement and continued support through this process.

This summer, we introduced the In-Person and Remote Learning Models we will follow throughout this year.

In both the In-Person and Remote Learning models:

- Assessments and grades will be used
- Attendance will be taken daily
- Students will have regular contact with Shawnee Mission School District teachers/support staff

We have made updates to our learning management system (Canvas) and our content filtering system (Lightspeed) to strengthen Remote Learning. There is more information about those updates in this issue.

Families selected one of the following Learning Models for each of their children. The selection will be followed throughout the semester:

In-Person Learning: This will be based on COVID-19 conditions in the county and our ability to ensure the safety of our students and staff. Students are assigned to their home school based on their address or approved transfer school. Students may receive instruction through an In-Person Learning, Hybrid Learning, or Remote Learning model.

Remote Learning (Full-time Online for First Semester) – Students will be assigned to a Remote Learning Shawnee Mission School District teacher and will remain in that class for the semester. Enrollment at the home school will remain intact. Students will not attend in person anytime throughout the semester.

Throughout the year, we will take a science-based, safety-first approach, working closely with the Johnson County Department of Health and Environment (JCDHE) to monitor health data and make decisions about when In-Person Learning will be safe to conduct.

I know these are challenging times. We all want school to resume as normal. One day it will. Until that time, we will continue to work as a community to provide a safe learning and working environment as we follow through on our commitment to help every child to be a successful learner. ♦

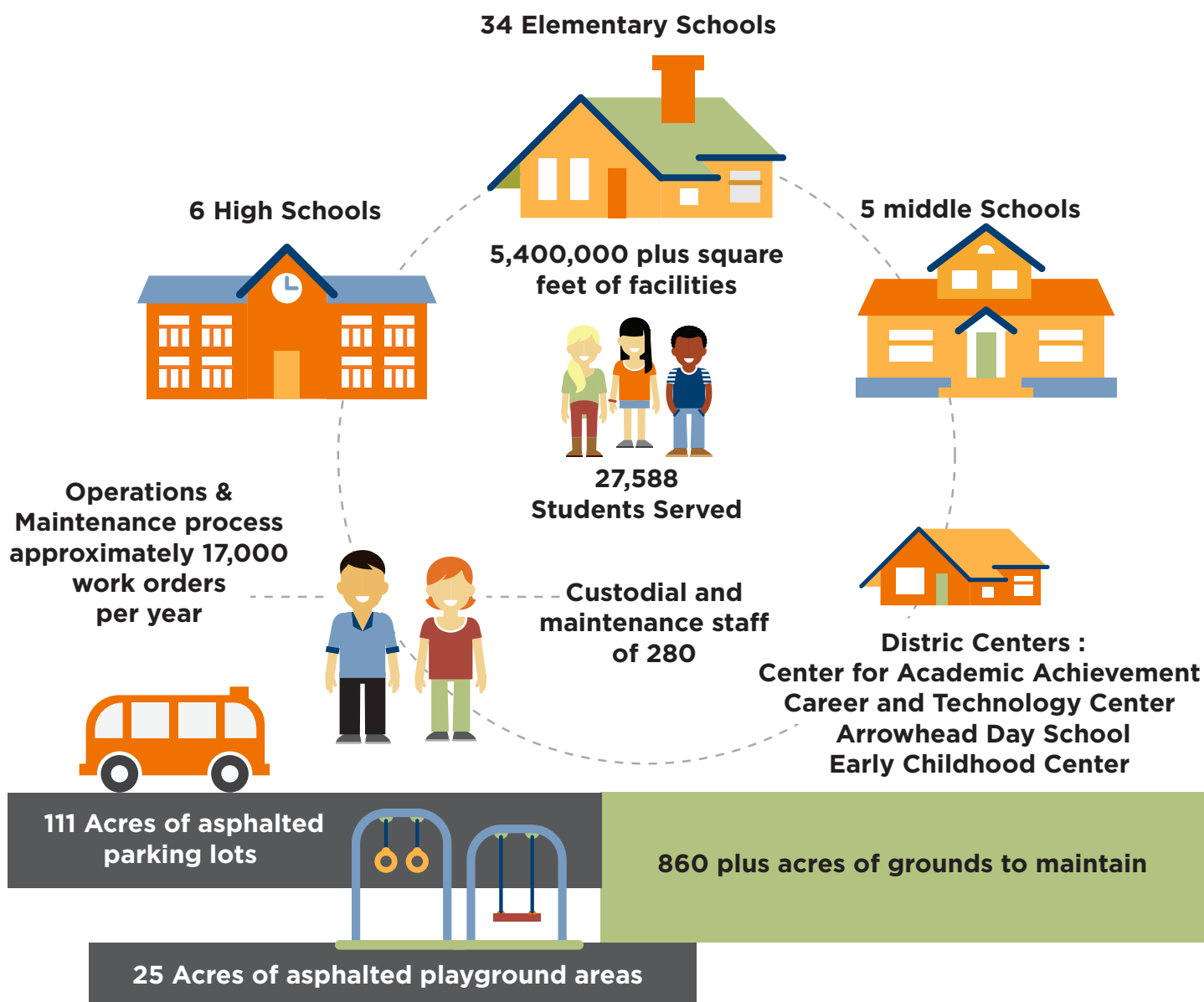


Dr. Mike Fulton

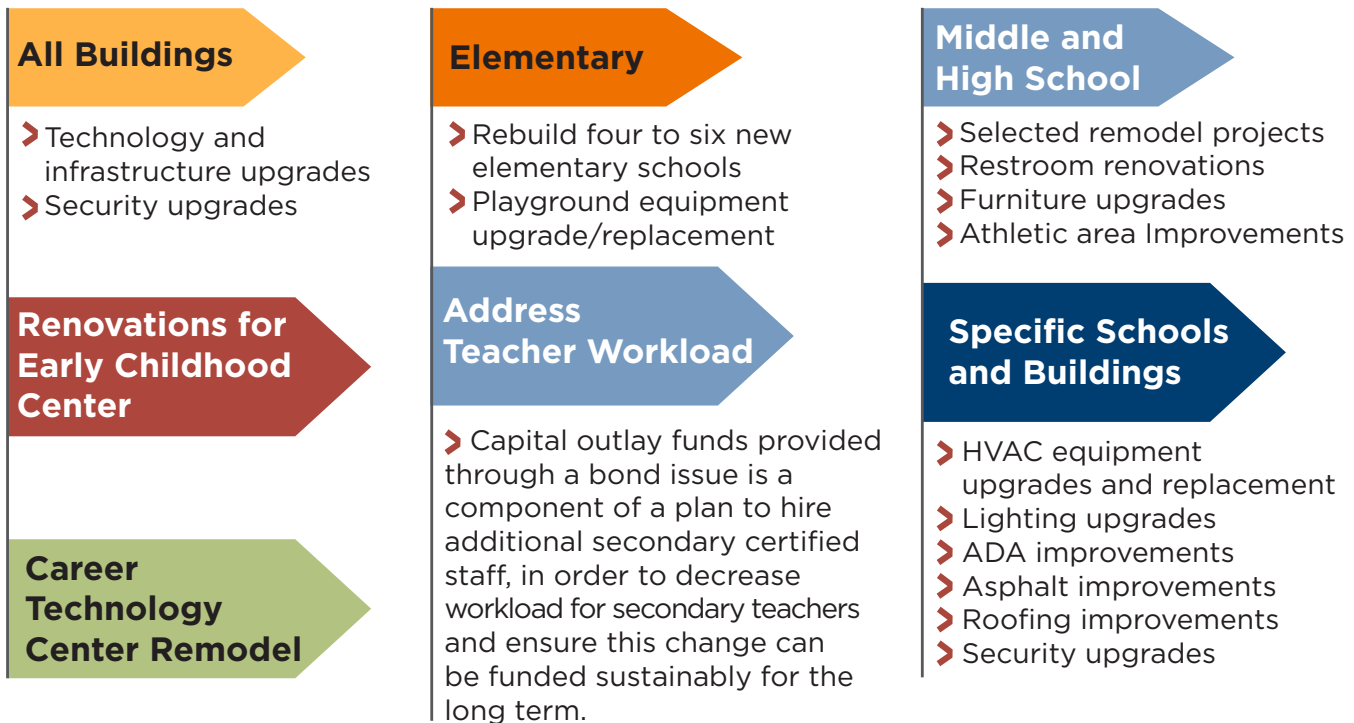
Shawnee Mission Strong: Strong Schools, Strong Communities

2020 Shawnee Mission School District Bond

> District Overview <



➤ Most Immediate Needs ◀



In the coming months, the Shawnee Mission community may have the opportunity to consider questions related to school building and facility needs across the district through a bond issue question on local ballots.

Identified Facility Needs in the SMSD

Shawnee Mission has identified facility needs, as determined through a site evaluation, extensive community input and feedback, and the work of the Facilities Action Team and the District Facilities Task Force.

It would take a series of bond issues over multiple years to address all of the facility needs. It is important to note, that in any future bond scenario proposed by task forces and action teams, Shawnee Mission's mill levy rate would still be the lowest in the county.

Dates and Timelines

June and July 2020: Shawnee Mission conducts a community survey to determine thinking about a potential bond issue.

August: Board of Education to consider a possible bond election at the August 10 and 24 Board of Education meeting.

- October 13: Last Day to Register to Vote in Kansas for the November 3 General Election
- November 3: Potential for Bond Issue Election Day
- January 2021: Potential Time for Bond Issue Election if November Election Not Held

Strategy 5 of the District Strategic Plan

developed by the Shawnee Mission community states: "We will strategically focus resources to support state-of-the-art facilities to accomplish beliefs, missions, and objectives." Following a site evaluation, which used an industry-accepted scoring rubric a Facilities Action Team and Facilities Task Force determined priorities for a potential bond issue, along with processes and timelines for public engagement. Community forums were held in October 2019 to obtain community feedback. A survey also was conducted in June and July 2020 to determine community support of a potential bond issue.

Facility plans have been designed to help address needed repairs and maintenance, update aging facilities through repairs and rebuilds, and helps us strive to increasingly comply with the Americans with Disabilities Act.

"Our goals when addressing facility needs all relate to supporting student learning and providing them environments where they can be successful," Mike Fulton, superintendent said. ♦

Find Out More

The Shawnee Mission School District will provide information and details on facility needs on "Information Central" webpage on www.smsd.org.

Broadmoor Urban Farm: Sustainable, Educational Community Resource



Chef Justin Hoffman, Chef Bob Brassard and Josh Himstedt plow a field at the Broadmoor Urban Farm.

The 1.3 acres of the Broadmoor Urban Farm on the campus at the Center for Academic Achievement has been plowed, composted, and planted. Now, educational opportunities are growing for Shawnee Mission students.

The Culinary Arts and Hospitality Signature Program oversees the farm, which is on the same site as the district's student-run, farm-to-table restaurant "The Broadmoor Bistro."

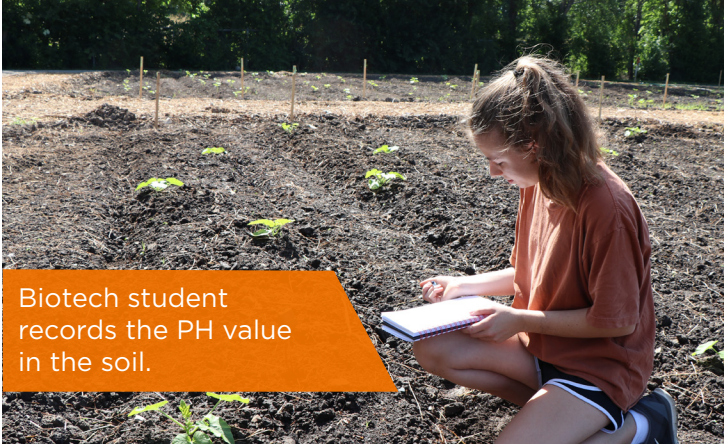
In May, a farm expansion project, including a greenhouse and tractor barn, was completed with support from the 2015 bond issue and several generous donors. Staff members have been working with students, alumni, and volunteers to prepare the soil, lay irrigation tubing, and plant seedlings. The greenhouse will allow maximum production year-round. There are plans to install a hoop house over one field to grow year-round outdoors, like a mini greenhouse.

"I think the farm is a really good idea that allows all students to have this experience and a hands-on learning opportunity," said Paige Eshnaur-Meador, an incoming Shawnee Mission South junior enrolled in Commercial Baking through the Culinary Arts Signature Program.

The first step to prepare the fields for planting was to do a deep plow of the soil, with the goal to save some of the soil from construction debris and aerate other areas where there is a great deal of clay. The deep plowing helps soften the young soil and aerates it so it can hold moisture and root systems can grow. Rainwater is captured and used for field irrigation.

Chef instructor Robert Brassard oversees the farm with instructors Chef Justin Hoffman, Chef Steve Venne, and Matt Ziegenhorn, who helps with community volunteers and partners. All are staff members of the Culinary Arts and Hospitality Signature Program.

"Our goal is to provide hands-on, visual, learning," Brassard explained. "We want to create food memory in our students, and give them learning



Biotech student records the PH value in the soil.

they can take with them. We want to be a resource for our school district and provide fresh fruits and vegetables, knowledge about nutrition, and a career path for students interested in sustainable farming."

A wide variety of fruits, vegetables and herbs are planned for the farm. Using companion planting, there are tomatoes, pole beans, and cucumbers planted next to each other to provide shade and easy access for tying. There are also plans for okra, five varieties of lettuces, root vegetables, and pumpkins, which will all be planted organically. One bed is open for "chaos gardening" where any leftover seeds or seedlings are all planted together.

Involving Students and the Community

The farm will first and foremost serve as a classroom and provide volunteer and entrepreneurial opportunities for high school students. It will also be a field trip destination for elementary and middle school students where they might pick their own pumpkin or learn about how food goes from seed to plate.


Learning will be year-round and will include classes outside of the culinary program. Biotechnology students, who attend classes at the CAA, will grow and analyze mushrooms and measure the PH value or nitrogen level in the soil as part of the "Biotech in Agriculture and Pharmaceuticals" class. Dr. Kenneth Lee, Biotechnology instructor, spent time at the farm this summer with two students testing the soil to make the PH level more neutral so plants can grow better.

"The expansion of the farm allows us to expand our classes and provide

even more experiences to students that will give them the skills they need to go directly to work or college," Lee noted.

Students in the Engineering Signature Program will have the opportunity to develop irrigation systems incorporating the slope of the land or build the architecture of a terraced field.

Summer internships and entrepreneurial projects like a curbside farmers market during the pandemic or canning salsas and jams for sale will all be possible. For years, the farm has provided food for the Broadmoor Bistro. It also has provided produce and herbs to local restaurants for purchase. Summers will continue to be a time for weeding and harvesting for students and the community. The farm will welcome parents, families, and volunteers



Student volunteers help plant seedlings in the greenhouse.

who will be able to take produce home with them in return for their help.

The Broadmoor Urban Farm is also made possible through many essential partnerships including Powell Gardens, Cultivate KC, Gibbs Farm, The Giving Grove, Slow Food Kansas City, Joann Schwarberg Landscape Architecture, and Missouri Organic Recycling. This includes generous donations from the Clay Blair Family Foundation and the Hudson Family Foundation.

Brassard notes that the goal to constantly model good nutritional behavior, be locally sustainable, and provide life skills is an innovative model that could serve as a roadmap for other school districts in the area. ♦



Fall 2019, Wade Antonio Colwell, Deep Equity facilitator, leads a session for SMUSD staff members.

Deep Equity Training in the Shawnee Mission School District

The second of five strategies in the Strategic Plan focuses on equity and inclusion.

Strategy 2: We will relentlessly create a fully unified, equitable, and inclusive culture

Equity is woven throughout the strategic plan. The district is partnering with Corwin to conduct Deep Equity training across the district. Deep Equity is a comprehensive and systemic professional development process aimed at producing the deep personal, professional, and organizational transformations that are necessary to create equitable places of learning for all children and equitable workplaces for all staff.

The Deep Equity professional development is designed to help educators dismantle disparities through sustained, collaborative efforts to achieve systematic change.

Dr. Mike Fulton, superintendent, has emphasized the district's commitment to work to improve efforts related to Diversity, Equity, and Inclusion, which are integral parts of the Strategic Plan created by our community. The district's starting point in this work is the training of all staff. The 2019-2020 school year was the first in a three-year initial training process.

Six interactive trainings, which included administrators, educators, and staff, were conducted. The training, focused on personal culture and journey, growth toward cultural competence, and connecting adult cultural competence with student outcomes.

"The work we need to do as a system to change centuries of thoughts and actions around these issues cannot be done in a 90-minute training session. It is deep work, and it has to be done right," Fulton noted. "Some might wonder why this takes three years, but the reason is right there in the name: 'Deep Equity.'"

This summer, virtual Train-the-Trainer sessions began. This is a capacity-building model that empowers School Leadership Teams to lead equity efforts at the building and classroom level. Three to five staff members have been selected at each Shawnee Mission school and will lead school equity efforts. The second year of training will focus on implementation at each building.

Professional development around equity and inclusion will be ongoing, and informed by research and data as they relate to achieving the three objectives.

Shawnee Mission is planning this year for an increased focus during board meetings on reviewing data and research that benchmark where we are as a community on key equity indicators, and a more robust system for progress monitoring. Dr. Fulton will also establish an Equity Advisory Committee who will engage in dialogue around key data related to the Strategic Plan.

One member of the Equity Advisory Committee will be Dr. Tyrone Bates, Jr., diversity, equity, and inclusion coordinator, who started in this new position in the 2019-2020 school year. As part of his introduction to the school district, Dr. Bates conducted a culture walk with each principal in every school.

Each walk included a thorough tour of the building, listening and reflecting on conversations among students and adults. Dr. Bates gave thoughtful consideration to the messages presented to students throughout the building through pictures and signs, encouraging language that is inviting and inclusive.

Dr. Bates offers four workshops that he has conducted for community groups, PTAs as well as students and staff members at Shawnee Mission schools. The workshops include:

- Implicit Bias' Relationship to Setting High Expectations for Students
- Lenses of Perspective
- Intersectionality of Race & Poverty in Education
- Building Effective & Sustainable Relationships with Students

Dr. Bates also helps connect educators to a variety of resources, speakers, and organizations available on his Diversity and Equity webpage. Most recently, Shawnee Mission librarians curated a website featuring elementary resources for students and families that features books that celebrate diversity, equity, and inclusion. These resources are available on the www.smsd.org website on the Diversity and Equity webpage.

In conjunction with this project, Rebecca Anthony, SMSD Social Studies Division Coordinator and Shawnee

Mission Northwest (SMNW) Advanced Placement (AP) United States History and International Baccalaureate (IB) History teacher started a chapter of Project Lit at SMNW. Project Lit is a nationwide movement to get culturally relevant, contemporary books into the hands of students. These resources are also available on the Diversity and Inclusion webpage of the SMSD website. Anthony is working with Dr. Bates on how to incorporate these books in more schools across the district.

This mission statement was developed in collaboration with building Diversity and Inclusion committees across the district, including parents, students and community members.

Shawnee Mission School District Diversity and Equity Mission Statement

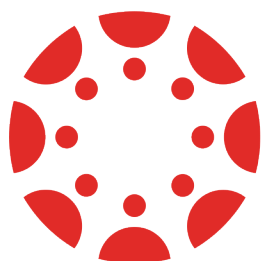
The Shawnee Mission School District embraces its role in establishing a long-term mission and vision for diversity, equity, and inclusion. It is our mission to value differences and to actively promote inclusion and equity. We will not accept an unwelcoming or unsafe environment for our students and staff. We envision a district where every student is encouraged to achieve their highest potential, and where we can maximize our differences to achieve excellence. We will fully embrace our rich, diverse community as expressed through race, ethnicity, socioeconomic status, ability, sexual orientation, gender identity, gender expression, religion, national origin, immigration status, language background, language proficiency, and family structure.

We recognize that it will take growth, change, hard work, and vigilance to achieve and maintain this vision.

The Shawnee Mission School District is committed to valuing all students and to meeting their individual learning needs, while concurrently developing their understanding and respect of the differences that make each and every student unique, thus preparing students to live in an inclusive, global community and world. ♡



Introducing Canvas: A New Learning-Management System



CANVAS

As she balanced numerous school activities, including basketball, track, and orchestra, Shawnee Mission West senior CC Carter said her teachers were also using multiple apps and platforms for classroom assignments.

But in the 2020-2021 school year, Carter will have a new resource to help as she handles it all. The Shawnee Mission School District will adopt Canvas as a new, district-wide Learning Management System (LMS).

Carter served on a committee of students, parents, staff, teachers, and administrators representing all district feeder patterns which selected the LMS. When she learned the district was moving to one platform she said, “I feel like it will bring my stress level down tremendously because of how organized it is.”

An LMS not only delivers content, but also simplifies communication, allows for teachers to create formative learning experiences, and tracks student success. It will integrate with the district’s Student Information System, Skyward, and become the central hub for content and course management, learning, and parent communication.

A key goal in providing this resource is to offer a simplified, more connected learning experience for students, staff, and parents. The Board of Education approved the purchase of Canvas in May 2020 to directly address

feedback received from parents, staff, and students through a Thoughtexchange at the conclusion of this spring. (Thoughtexchange is an online platform where participants can share thoughts and agree or disagree with other responses about a specific topic.) Thoughtexchange responses indicated that 85% of participants thought the district was using too many platforms, which was confusing and time-consuming for users.

Canvas is designed to provide a user-friendly and age-appropriate experience for students in Pre-Kindergarten through college. It is also used at numerous higher education institutions across the country and more locally at Johnson County Community College, Kansas State University, and the University of Kansas.

“Knowing some colleges use this, it makes me feel better about college,” Carter said.

Instructional Coach Krista Carson believes that parents will appreciate that Canvas allows them to view upcoming projects and assignments, allows them to see educational feedback provided by teachers and students, and allows them to follow their child’s learning experiences through their preferred notification format; texts, emails, etc.

Teachers will be undergoing professional development as Canvas is implemented across the district. One

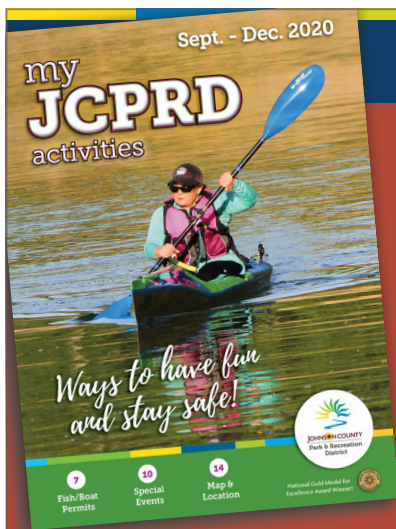
benefit is that Canvas has round-the-clock support for teachers as they learn the platform, according to Lindsay Stephenson, instructional coach at Shawnee Mission South.

“Ultimately it will make teachers’ jobs more effective and efficient and help our families to feel more included and organized with the educational process,” Stephenson shared.

VPN Replaced by Cloud-Based System

This fall, student technology devices will no longer use a Virtual Private Network (VPN) for content filtering. Lightspeed, a cloud-based solution, will be the new resource used to help keep students safe on-line while using district technology devices. In addition to content filtering, Lightspeed will also provide the district an array of possibilities including classroom access management, cyber harm protection, and parent portals.

This change comes as a result of the work and recommendations of the Digital Learning Taskforce, feedback provided by parents, students, and staff through Thoughtexchange, and the results of exploration conducted by an Information and Communication Technology (ICT) and Curriculum and Instruction test team. ♦



JOIN US!

JCPRD's
program
and event
listings
online &
in print!

Visit JCPRD.com/activities

17251 W. 87th St. • Lenexa, KS • (913) 993-8400

NOW HIRING!



SHAWNEE MISSION
SCHOOL DISTRICT

AQUATIC CENTER

- Memberships Available
- Group & Private Swim Lessons
- Water Exercise
- Master's Swim
- Lap Swimming
- Water Polo



Operated by JCPRD. For information or to register
online visit JCPRD.com/SMSDaquaticcenter.



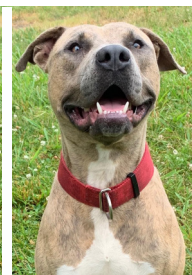
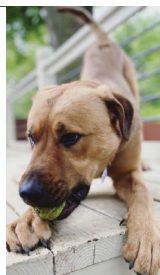
Looking for
an active job,
working with
children?

Preschool and After School Teachers

- Full-Time Positions **\$16 - \$20** per hour
- Part-Time Positions **\$8 - \$12** per hour

JCPRD.com/jobs

JCPRD is an equal opportunity employer, a nationally accredited agency
and a National Gold Medal Award Winner for Excellence!



ADOPT YOUR NEW BEST FRIEND FROM LUCKY 13 RESCUE!



- 🐾 Foster home based rescue in Kansas City, MO
- 🐾 All dogs live in an at home environment
- 🐾 We will match you with the perfect fit

If you can't adopt, foster, volunteer or donate!



lucky13rescue.org 🐾 info@lucky13rescue.org 🐾 816-313-8229

Census 2020: Every Person Counts!

It's not too late to complete the 2020 Census. The 2020 Census counts every single person in the country. The information gathered in the Census is used to make sure that our community gets its fair share of federal funding for education,

health care, housing, education, and nutrition programs. And, it makes sure that you are fairly and adequately represented in government.

Responding to the 2020 Census is an easy, safe, and important way to help provide resources for children in the Shawnee Mission community for the next ten years. This includes programs that directly support children in the Shaw-

nee Mission School District, such as healthcare, childcare, food assistance, early childhood development and programs

for at-risk children.

Census forms were mailed to every household. Completing the Census just takes a few moments. You may respond using one of the following options:

- Online on the internet or a smartphone, there are 13 language options
- Over the telephone at 844-330-2020, for Spanish at 844-468-2020
- Using a paper form
- Responding to a census worker who comes to the door

Taking part in the 2020 Census is part of the civic duty of every person living in the country. It is a way for everyone to participate in our democracy and say: "I COUNT!" And importantly, it is private and secure. It's against the law for the Census Bureau to release your responses in a way that could identify you or anyone in your household, and by law, your responses can't be used against you.

Take the time to fill it out. Doing this makes sure that every voice counts! ♦



Save-the-Date for the Annual Foundation Fall Breakfast

Join us to celebrate incredible success stories of our Shawnee Mission students and educators at the Shawnee Mission Education Foundation Fall Breakfast.

The Shawnee Mission Education Foundation is making plans with our superintendent, Dr. Mike Fulton, to honor the accomplishments and resilience of our students and educators at our annual Fall Breakfast:

Tuesday, November 3

Overland Park Convention Center

We are hopeful that we can celebrate in person, but we are also putting contingencies in place in the event that the Breakfast needs to come to our community virtually.

Please consider generously supporting the Fall Breakfast at one of the sponsorship levels or with individual reservations at our website www.smef.org. Your continued support is vital to the success of our kids.

For questions or to learn more about the Fall Breakfast go the www.smef.org or call 913-993-9363.

Thank you for supporting us as we celebrate our schools, our educators, and most importantly, our Shawnee Mission students. ♦



SAVE THE DATE

Tuesday, November 3

7:30 – 9 a.m.

Overland Park Convention Center

6000 College Blvd.

Overland Park, KS 66211

For questions or to learn more about the Fall Breakfast go the www.smef.org or call 913-993-9363.

LUCKY 13 AUTO

103 E. Main, Drexel, MO 64742
816-619-2886 • lucky13auto.com



It's your lucky day.



FAMILY OWNED • QUALITY VEHICLES • WE BUY/SELL/TRADE



**TRADITION.
EXCELLENCE.
ADVANCEMENT.**

- A Princeton Review **Best Midwestern College***
- Over 30 majors, including top-notch **health care, business, and education programs**
- **Generous financial aid** – up to \$60,000 in scholarships over four years
- The **college sports experience** with 21 varsity sports

*From The Princeton Review. © 2019 TPR Education. All rights reserved. Used under license.

UNIVERSITY of SAINT MARY

**SCHEDULE YOUR VISIT TODAY.
STMARY.EDU/SHAWNEEMISSION**



SPONSORSHIP OPPORTUNITY

Advertise in INSIDE and reach over 110,000 homes in the Shawnee Mission School District, while supporting our schools.



SHAWNEE MISSION
SCHOOL DISTRICT

Email adcommun@smsd.org for information.

Save \$15 With Our November Special!

A⁺ce Cookie Tutoring
Bite into learning; become a smart cookie!

**+ ACT + General Education + Proofreading +
+ Study Skills + Test Taking Strategies +
+ Professional Writing Services +**

Help your students get the grades they want before it's too late!

Call: 913-938-6344 Visit: acecookietutoring.com

Offering whole-person care for every age at every stage



We're here for you when it comes to providing your family with the quality health care you need. If you're feeling sick, you can schedule an online video visit with a medical specialist. Simply download the AdventHealth app on your phone or tablet from your app store. You can count on us for expert, whole-person care every day.

Schedule a Video Visit

Download the AdventHealth app on your phone or tablet from your app store. Talk to a medical specialist via a live video chat 24 hours a day, 7 days a week. Prescriptions are sent to your local preferred pharmacy and no appointment is necessary. [Learn more at AdventHealth.com/eCare.](https://www.adventhealth.com/eCare)



To find a primary care physician who's just right for you, visit [MyHealthKC.com](https://www.MyHealthKC.com).

Eight locations throughout Johnson County


AdventHealth

[AdventHealthKC.com](https://www.AdventHealthKC.com)